

## Product datasheet for **RG210711**

### GLT25D1 (COLGALT1) (NM\_024656) Human Tagged ORF Clone

#### Product data:

Product Type:	Expression Plasmids
Product Name:	GLT25D1 (COLGALT1) (NM_024656) Human Tagged ORF Clone
Tag:	TurboGFP
Symbol:	GLT25D1
Synonyms:	BSVD3; ColGalT 1; GLT25D1
Mammalian Cell Selection:	Neomycin
Vector:	pCMV6-AC-GFP (PS100010)
E. coli Selection:	Ampicillin (100 ug/mL)



[View online »](#)

**ORF Nucleotide Sequence:**

>RG210711 representing NM\_024656  
 Red=Cloning site Blue=ORF Green=Tags(s)

TTTTGTAATACGACTCACTATAGGGCGGCCGGGAATTCGTCGACTGGATCCGGTACCGAGGAGATCTGCC  
 GCC**CGGATCGCC**

ATGGCGGGCGCCACGCGCGGGCGGGCGGGCAGCCGCTCCTGGCGCTGCTGCTTCTGCTGCTGG  
 CGCCACTGCCGCCGGGGCCCGCCGGGCGCCGACGCCTACTTCCCGAGGAGCGCTGGAGCCCGGAGTC  
 GCCCTGCAGGCGCCGCGGTGCTCATCGCGCTGTTGGCGGAAACGCGGCCACGCGTTGCCACCACG  
 CTGGGCGCACTCGAGCGGCTGCGGCACCCGCGGGAGCGCACGGCGCTATGGGTGGCTACGGACCACAACA  
 TGGATAACACGTCAACTGTGCTGCGGGAGTGGCTGGTGGCCGTGAAGAGTTTGTACCATTCCGTGGAGTG  
 GCGGCCAGCAGAGGAGCCAGGTCCTACCCGGACGAGGAAGGCCGAAACACTGGTCTGACTCACGCTAC  
 GAGCATGTCATGAAGTTGCGCCAGGCAGCCCTGAAATCAGCTCGAGACATGTGGGCTGATTACATCTGT  
 TTGTAGATGCGGACAACCTGATCCTCAACCCTGACACACTGAGCCTGCTCATCGTGAGAACAAGACGGT  
 GGTGCGCCCATGCTGGATTCCCGGGCTGCGTACTCCAATTCTGGTGTGAATGACTTCCAGGGCTAC  
 TACAAGCGCACACTGCCTACATCCCTATCCGCAAGCGAGACCGCGGGGCTGCTTTCAGTTCCCATGG  
 TGCACTCGACCTTCTGATCGACCTGCGGAAGGCGGCGTCCAGGAACCTGGCCTTCTACCCACCTCACCC  
 TGACTACACCTGGTCTTTGACGACATCATCGTCTTTCCTTCTCCTGCAAGCAGGCAGAGGTTAGATG  
 TATGTGTGCAACAAGGAGGAGTACGGATTCTTGCCAGTGCCATTGCGCGCCACAGCACCCTCCAGGATG  
 AGGCCGAGAGTTCATGCATGTGCGAGCTGGAGGTCATGGTGAAGCACCCGCCCGCAGAGCCCTCCCGCTT  
 CATCTCGGCTCCACCAAGACACCGGACAAGATGGGCTTCGACGAGGCTTCATGATCAACTGAGGCGG  
 CCGCAGGACCGGGGAGCGCATGCTGCGGGCGCTGCAGGCACAGGAGATCGAGTGCCGGCTGGTGGAGG  
 CCGTGGACGGCAAAGCCATGAACACAGCCAGGTGGAGGCACTGGGGATCCAGATGCTGCCTACCG  
 GGACCCCTACCACGGCCCGCCCTCACCAAGGGTGAGCTGGGCTGCTTCCCTGAGCCACTACAACATCTGG  
 AAGGAGGTGGTGGACCGGGGCTGCAGAAATCGCTTGTGTTTGGAGATGACCTGCGTTTTGAGATCTTCT  
 TCAAGAGACGTCTGATGAACCTCATGCGGGATGTGGAGCGGGAGGGCCTGGACTGGGACCTCATCTATGT  
 GGGCCGGAAGCGGATGCAGGTGGAGCACCCCGAGAAGGCTGTGCCTCGCGTGAGGAACCTGGTGGAGGCC  
 GACTATTCTACTGGACCCTGGCTACGTGATCTCCCTGCAAGGCGCCCGCAAACCTGCTGGCTGCTGAGC  
 CGCTCTCAAGATGCTGCCTGTGGACGAGTTCTGCCCGTCATGTTGACAAACACCCAGTGTCCGAGTA  
 CAAGGCCACTTCTCCCTCCGCAACCTGCATGCCTTCTCTGTGGAGCCGCTGCTCATCTACCCACACAC  
 TACACAGGAGACGATGGCTATGTGAGTGACACCGAGACCTCAGTCGTATGGAACAATGAGCAGTCAAGA  
 CCGACTGGGACCGCCAAAGTCCCAAGAAGATGCGGGAGCAGCAGGCACTGAGCCGTGAGGCCAAGAACT  
 GGACGTGCTCCAGTCCCCACTGGACAGTGTGCCCGGGATGAACT

AG**CGGACCG**ACGCGTACGCGGCCGCTCGAG - GFP Tag - GTTTAA

**Protein Sequence:**

>RG210711 representing NM\_024656  
 Red=Cloning site Green=Tags(s)

MAAAPRAGRRRQPLALLLLLLLAPLPPGAPPADAYFPEERWSPESPLQAPRVLIALLARNAHALPTT  
 LGALERLRHPRERTALWVATDHNMDNTSTVLREWLVAVKSLYHSVEWRPAEEPRSYDDEEGPKHWSDSRY  
 EHVMLKRLQAALKSARDMWADYILFVDADNLI LNPDLSLLIAENKTVVAPMLDSRAAYSNFWCGMTSQGY  
 YKRTPAYIPIRKRDRRGCFVPMVHSTFLIDLKAAASRNLAFYPPHPDYTWSFDDIIVFAFCKQAEVQM  
 YVCNKEEYGFVPLRAHSTLQDEAESFMHVQLEVMVKHPPAEPSPRISAPTKTPDKMGFDEVFMINLRR  
 RQDRRERMLRALQAQIECRLVEAVDGMKAMNTSQVEALGIQMLPGYRDPYHGRPLTKGELGCFLSHYNIW  
 KEVYVDRGLQKSLVFEDDLRFEIIFKRRMLNLMRDVEREGLDWDLIYVGRKRMQVEHPEKAVPRVRNLVEA  
 DYSYWTLAYVVISLQGARKLLAAEPLSKMLPVDFELPVMFDKHPVSEYKAHFSLRNLHAFSVEPLLIYPTH  
 YTGDDGYVSDTETSVVWNNEHVKTDWDRAKSQKMREQQALSREAKNSDVLQSPLDSAARDEL

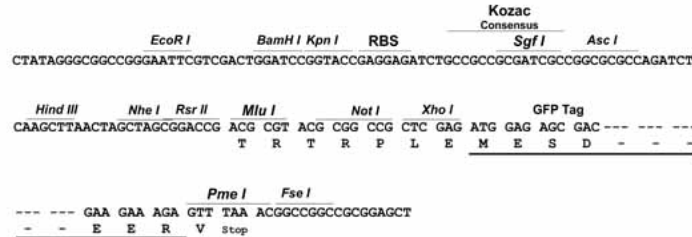
SGPTRRRLE - GFP Tag - V

**Restriction Sites:**

Sgfl-RsrII

**Cloning Scheme:**

Cloning sites used for ORF Shuttling:


**ACCN:** NM\_024656

**ORF Size:** 1866 bp

**OTI Disclaimer:** The molecular sequence of this clone aligns with the gene accession number as a point of reference only. However, individual transcript sequences of the same gene can differ through naturally occurring variations (e.g. polymorphisms), each with its own valid existence. This clone is substantially in agreement with the reference, but a complete review of all prevailing variants is recommended prior to use. [More info](#)

**OTI Annotation:** This clone was engineered to express the complete ORF with an expression tag. Expression varies depending on the nature of the gene.

**Components:** The ORF clone is ion-exchange column purified and shipped in a 2D barcoded Matrix tube containing 10ug of transfection-ready, dried plasmid DNA (reconstitute with 100 ul of water).

**Reconstitution Method:**

1. Centrifuge at 5,000xg for 5min.
2. Carefully open the tube and add 100ul of sterile water to dissolve the DNA.
3. Close the tube and incubate for 10 minutes at room temperature.
4. Briefly vortex the tube and then do a quick spin (less than 5000xg) to concentrate the liquid at the bottom.
5. Store the suspended plasmid at -20°C. The DNA is stable for at least one year from date of shipping when stored at -20°C.

**RefSeq:** [NM\\_024656.2](#), [NP\\_078932.2](#)
**RefSeq Size:** 3593 bp

**RefSeq ORF:** 1869 bp

**Locus ID:** 79709

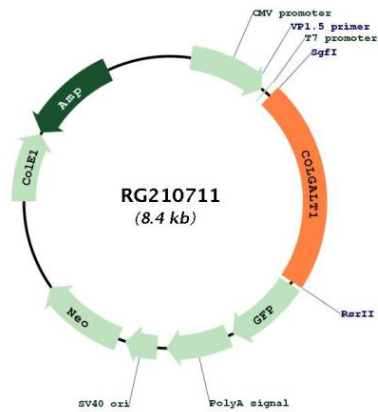
**UniProt ID:** [Q8NBJ5](#)

**Cytogenetics:** 19p13.11

**Domains:** Glyco\_transf\_25

**Gene Summary:** The protein encoded by this gene is one of two enzymes that transfers galactose moieties to hydroxylysine residues of collagen and mannose binding lectin. This gene is constitutively expressed and encodes a soluble protein that localizes to the endoplasmic reticulum. [provided by RefSeq, Dec 2015]

**Product images:**



Circular map for RG210711