

Product datasheet for **RG210647**

TRAPPC2L (NM_016209) Human Tagged ORF Clone

Product data:

Product Type: Expression Plasmids
Product Name: TRAPPC2L (NM_016209) Human Tagged ORF Clone
Tag: TurboGFP
Symbol: TRAPPC2L
Synonyms: HSPC176; PERRB
Mammalian Cell Selection: Neomycin
Vector: pCMV6-AC-GFP (PS100010)
E. coli Selection: Ampicillin (100 ug/mL)
ORF Nucleotide Sequence: >RG210647 representing NM_016209
Red=Cloning site Blue=ORF Green=Tags(s)

TTTTGTAAATACGACTCACTATAGGGCGGCCGGAATTCGTCGACTGGATCCGGTACCGAGGAGATCTGCC
 GCCCGATCGCC

ATGGCGGTGTGCATCGCGGTGATTGCCAAGGAGAATTACCCCTCTACATTCGCAGCACCCCTACGGAGA
 ACGAGCTGAAGTTCCACTACATGGTGCACACATCTCTGGACGTGGTGGATGAGAAGATCTCCGAATGGG
 GAAGGCCCTGGTCGACCAGAGGGAGCTGTACCTGGCCTGCTCTACCCACGGAGGACTACAAGGTATAC
 GGCTACGTCACCAACTCCAAGGTGAAGTTGTCTGGTGGTAGATTCTCCAACACAGCCCTTCGAGACA
 ACGAAATTCGCAGCATGTTCCGGAAGCTACAACTCCTACACAGACGTGATGTGCAACCCCTTCTACAA
 CCCGGGGGACCGCATCCAGTCCAGCAGGCCTTTGATAACATGGTGACGTCGATGATGATACAGGTGTGC

ACGCGTACGCGGCCGCTCGAG - GFP Tag - GTTTAA

Protein Sequence: >RG210647 representing NM_016209
Red=Cloning site Green=Tags(s)

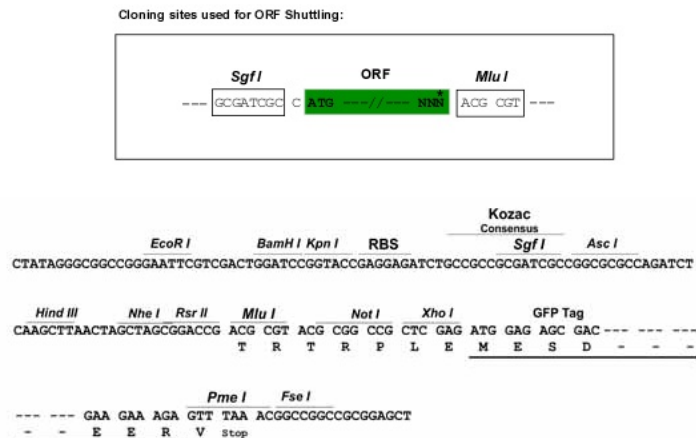
MAVCIAVIKENYPLYIRSTPTENELKFHYMVHTSLDVVDEKISAMGKALVDQRELYLGLLYPTEDYKVV
 GYVTNSKVKFVMVVDSSNTALRDNEIRSMFRKLHNSYTDVMCNPFYNPGDRIQSSRAFDNMVTSMMIQVC

TRTRPLE - GFP Tag - V

Restriction Sites: Sgfl-MluI


[View online »](#)

Cloning Scheme:



ACCN: NM_016209

ORF Size: 420 bp

OTI Disclaimer: The molecular sequence of this clone aligns with the gene accession number as a point of reference only. However, individual transcript sequences of the same gene can differ through naturally occurring variations (e.g. polymorphisms), each with its own valid existence. This clone is substantially in agreement with the reference, but a complete review of all prevailing variants is recommended prior to use. [More info](#)

OTI Annotation: This clone was engineered to express the complete ORF with an expression tag. Expression varies depending on the nature of the gene.

Components: The ORF clone is ion-exchange column purified and shipped in a 2D barcoded Matrix tube containing 10ug of transfection-ready, dried plasmid DNA (reconstitute with 100 ul of water).

Reconstitution Method:

1. Centrifuge at 5,000xg for 5min.
2. Carefully open the tube and add 100ul of sterile water to dissolve the DNA.
3. Close the tube and incubate for 10 minutes at room temperature.
4. Briefly vortex the tube and then do a quick spin (less than 5000xg) to concentrate the liquid at the bottom.
5. Store the suspended plasmid at -20°C. The DNA is stable for at least one year from date of shipping when stored at -20°C.

Note: Plasmids are not sterile. For experiments where strict sterility is required, filtration with 0.22um filter is required.

RefSeq: [NM_016209.5](#)

RefSeq Size: 642 bp

RefSeq ORF:	423 bp
Locus ID:	51693
UniProt ID:	Q9UL33
Cytogenetics:	16q24.3
Gene Summary:	This gene encodes a protein that interacts with the tethering factor trafficking protein particle (TRAPP complex). TRAPP complexes mediate the contact between vesicles and target membranes, and thus, are involved in vesicle-mediated transport of proteins and lipids. The encoded protein is related to the X-linked trafficking protein particle complex 2. A related pseudogene is located on the X chromosome. Alternative splicing results in multiple transcript variants encoding different isoforms. [provided by RefSeq, Jan 2016]

Product images:



Circular map for RG210647