

## Product datasheet for **RG210622**

### DLK2 (NM\_023932) Human Tagged ORF Clone

#### Product data:

Product Type:	Expression Plasmids
Product Name:	DLK2 (NM_023932) Human Tagged ORF Clone
Tag:	TurboGFP
Symbol:	DLK2
Synonyms:	DLK-2; EGFL9
Mammalian Cell Selection:	Neomycin
Vector:	pCMV6-AC-GFP (PS100010)
E. coli Selection:	Ampicillin (100 ug/mL)
ORF Nucleotide Sequence:	>RG210622 representing NM_023932 Red=Cloning site Blue=ORF Green=Tags(s)

TTTTGTAATACGACTCACTATAGGGCGGCCGGAATTCGTCGACTGGATCCGGTACCGAGGAGATCTGCC  
GCC**CGATCGC**C

ATGCCAGCGGCTGCCGCTGCCTGCATCTCGTGTGCCTGTTGTGCATTCTGGGGCTCCCGGTCAGCCTG  
TCCGAGCCGATGACTGCAGCTCCACTGTGACCTGGCCACGGCTGCTGTGCACCTGACGGCTCCTGCAG  
GTGTGACCCGGGCTGGGAGGGGCTGCACCTGTGAGCGTGTGTGAGGATGCCTGGTGCCAGCACGGTACC  
TGCCACCAGCCATGGCAGTGCATCTGCCACAGTGGCTGGCAGGCAAGTTCTGTGACAAAGATGAACATA  
TCTGTACCACGCAGTCCCCTGCCAGAATGGAGGCCAGTGCATGTATGACGGGGCGGTGAGTACCATTG  
TGTGTGCTTACCAGGCTTCCATGGGCGTACTGCGAGCGCAAGGCTGGACCCTGTGAACAGGCAGGCTCC  
CCATGCCGCAATGGCGGGCAGTCCAGGACGACAGGGCTTTGCTCTCAACTCACGTGCCGCTGCTTGG  
TGGGCTTTGTGGGTGCCGCTGTGAGGTAATGTGGATGACTGCCTGATGCGGCCCTGTGCTAACGGTGC  
CACCTGCCTTGACGGCATAAACCCTTCTCCTGCCTGTCTGAGGGCTTTGCTGGACGCTTCTGCACC  
ATCAACCTGGATGACTGTGCCAGCCGCCATGCCAGAGAGGGGCCGCTGTGGGACCGTGTCCAGGACT  
TCGACTGCCTCTGCCCCAGTGGCTATGGTGGCAAGACCTGTGAGCTTGTCTTACCTGTCCAGACCCCC  
AACCACAGTGGACACCCCTTAGGGCCACCTCAGCTGTAGTGGTACCTGCCACGGGGCCAGCCCCCAC  
AGCGCAGGGGCTGGTCTGCTGCGGATCTCAGTGAAGGAGTGGTGGGAGGCAAGAGGCTGGGCTAGGTG  
AGCCTAGCTTGGTGGCCCTGGTGGTGTGGGGCCCTCACTGCTGCCCTGGTTCTGGCTACTGTGTTGCT  
GACCCGTAGGGCCTGGCCCGGGGTGTCTGCCCCCTGGACCCTGTTGCTACCCTGCCCCACACTATGCT  
CCAGCGTGCCAGGACAGGAGTGTGAGTTAGCATGCTGCCAGCAGGGCTCCCCCTGCCACGTGACTTGC  
CCCCTGAGCCTGGAAAGACCACAGCACTG

AGCGGACCGACGCGTACGCGGCCGCTCGAG - GFP Tag - GTTTAA



[View online »](#)

**Protein Sequence:** >RG210622 representing NM\_023932  
 Red=Cloning site Green=Tags(s)

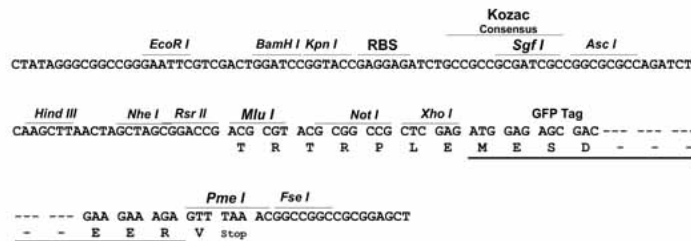
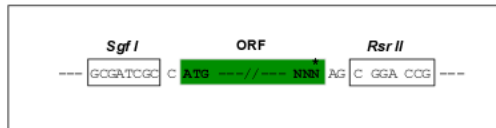
MPSGCRCLHLVCLLCILGAPQPVRADDCSSHCDLAHGCCAPDGSCRCDPGWEGLHCERCVRMPGCQHG  
 CHQPWQCICHSGWAGKFCDKDEHICTTQSPCQNGGQCMYDGGGEYHCVCLPGFHRDCERKAGPCEQAGS  
 PCRNGGQCQDDQGFALNFTCRCLVGFVGARCEVNVDDCLMRPCANGATCLDGINRFSCLCEGFAGRFCT  
 INLDDCASRPCQRGARCRDRVHDFDCLCPSTGYGGKTCCLVLPVPDPPTTVDTPGLPTSAVVVPATGPAPH  
 SAGAGLLRISVKEVYRRQEAAGLGEPSLVALVVFALTAALVLATVLLTLRAWRRGVCPGPGCCYPAPHYA  
 PACQDQECQVSMPLPAGLPLPRDLPPPEPGKTTAL

SGPTRRRLE - GFP Tag - V

**Restriction Sites:** SgfI-RsrII

**Cloning Scheme:**

Cloning sites used for ORF Shuttling:



**ACCN:** NM\_023932

**ORF Size:** 1149 bp

**OTI Disclaimer:** The molecular sequence of this clone aligns with the gene accession number as a point of reference only. However, individual transcript sequences of the same gene can differ through naturally occurring variations (e.g. polymorphisms), each with its own valid existence. This clone is substantially in agreement with the reference, but a complete review of all prevailing variants is recommended prior to use. [More info](#)

**OTI Annotation:** This clone was engineered to express the complete ORF with an expression tag. Expression varies depending on the nature of the gene.

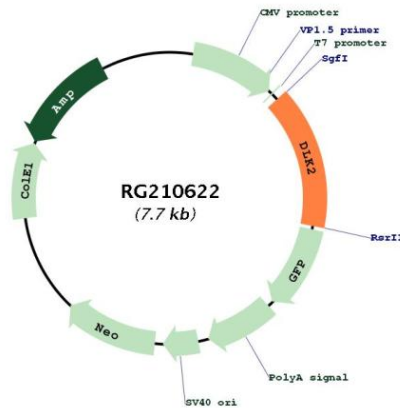
**Components:** The ORF clone is ion-exchange column purified and shipped in a 2D barcoded Matrix tube containing 10ug of transfection-ready, dried plasmid DNA (reconstitute with 100 ul of water).

**Reconstitution Method:**

1. Centrifuge at 5,000xg for 5min.
2. Carefully open the tube and add 100ul of sterile water to dissolve the DNA.
3. Close the tube and incubate for 10 minutes at room temperature.
4. Briefly vortex the tube and then do a quick spin (less than 5000xg) to concentrate the liquid at the bottom.
5. Store the suspended plasmid at -20°C. The DNA is stable for at least one year from date of shipping when stored at -20°C.

**RefSeq:** [NM\\_023932.4](#)  
**RefSeq Size:** 1574 bp  
**RefSeq ORF:** 1152 bp  
**Locus ID:** 65989  
**UniProt ID:** [Q6UY11](#)  
**Cytogenetics:** 6p21.1  
**Protein Families:** Druggable Genome, Transmembrane  
**Gene Summary:** Regulates adipogenesis.[UniProtKB/Swiss-Prot Function]

**Product images:**



Circular map for RG210622