

Product datasheet for **RG210613**

Mitochondrial ribosomal protein L11 (MRPL11) (NM_170738) Human Tagged ORF Clone

Product data:

Product Type:	Expression Plasmids
Product Name:	Mitochondrial ribosomal protein L11 (MRPL11) (NM_170738) Human Tagged ORF Clone
Tag:	TurboGFP
Symbol:	Mitochondrial ribosomal protein L11
Synonyms:	CGI-113; L11MT; MRP-L11
Mammalian Cell Selection:	Neomycin
Vector:	pCMV6-AC-GFP (PS100010)
E. coli Selection:	Ampicillin (100 ug/mL)
ORF Nucleotide Sequence:	>RG210613 representing NM_170738 Red=Cloning site Blue=ORF Green=Tags(s)

TTTGTGAATACGACTCACTATAGGGCGGCCGGAATTCGTCGACTGGATCCGGTACCGAGGAGATCTGCC
 GCC**CGATCGCC**

ATGTCAAAGCTCGGCCGGCGCCCGGGCCCTCAGGAAGCCCGAGAGAGGCGTTTCCATCAACCAGTTTT
 GCAAGGAGTTCAATGAGAGGACAAAGGACATCAAGGAAGGCATTCCTCTGCCTACCAAGATTTTAGTGAA
 GCCTGACAGGACATTTGAAATTAAGATTGGACAGCCCACTGTTTCTACTTCTGAAGGCAGCAGCTGGG
 ATTGAAAAGGGGCGCCGCAACAGGAAAGAGGTGGCAGGCCTGGTACCTTGAAGCATGTGTATGAGA
 TTGCCCGCATCAAAGCTCAGGATGAGGCATTTGCCCTGCAGGATGTACCCCTGTCGTCTGTTGTCCGCTC
 CATCATCGGGTCTGCCCCTTCTCTGGGCATTTCGGTGGTGAAGGACCTCAGTTCAGAAGAGCTTGCAGCT
 TTCCAGAAGGAACGAGCCATCTTCTGGCTGCTCAGAAGGAGGCAGATTTGGCTGCCCAAGAAGAAGCTG
 CCAAGAAG

ACGCGTACGCGGCCGCTCGAG - GFP Tag - GTTTAA

Protein Sequence:	>RG210613 representing NM_170738 Red=Cloning site Green=Tags(s)
-------------------	--

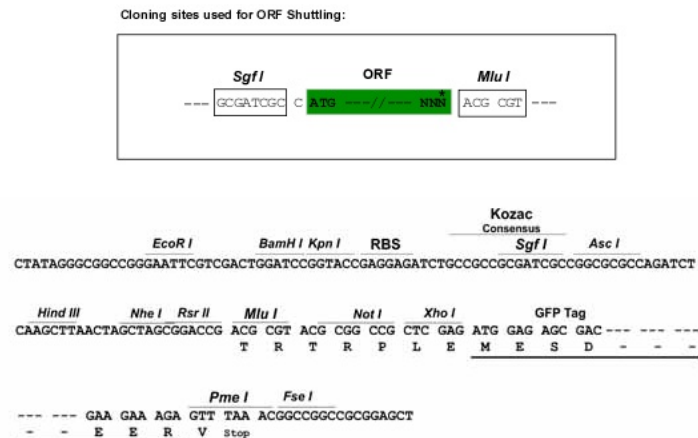
MSKLGRAARGLRKPERGVSINQFCKEFNERTKDIKEGIPLPTKILVKPDRTFEIKIGQPTVSYFLKAAAG
 IEKGARQTGKEVAGLVTLKHVYEIARIKAQDEAFALQDVPLSSVRSIIIGSARSLGIRVVKDLSSHEELAA
 FQKERAIFLAAQKEADLAAQEAAKK

TRTRPLE - GFP Tag - V

Restriction Sites:	SgfI-MluI
--------------------	-----------


[View online »](#)

Cloning Scheme:



ACCN: NM_170738

ORF Size: 498 bp

OTI Disclaimer: The molecular sequence of this clone aligns with the gene accession number as a point of reference only. However, individual transcript sequences of the same gene can differ through naturally occurring variations (e.g. polymorphisms), each with its own valid existence. This clone is substantially in agreement with the reference, but a complete review of all prevailing variants is recommended prior to use. [More info](#)

OTI Annotation: This clone was engineered to express the complete ORF with an expression tag. Expression varies depending on the nature of the gene.

Components: The ORF clone is ion-exchange column purified and shipped in a 2D barcoded Matrix tube containing 10ug of transfection-ready, dried plasmid DNA (reconstitute with 100 ul of water).

Reconstitution Method:

1. Centrifuge at 5,000xg for 5min.
2. Carefully open the tube and add 100ul of sterile water to dissolve the DNA.
3. Close the tube and incubate for 10 minutes at room temperature.
4. Briefly vortex the tube and then do a quick spin (less than 5000xg) to concentrate the liquid at the bottom.
5. Store the suspended plasmid at -20°C. The DNA is stable for at least one year from date of shipping when stored at -20°C.

RefSeq: [NM_170738.4](#)

RefSeq Size: 762 bp

RefSeq ORF: 501 bp

Locus ID: 65003

UniProt ID: [Q9Y3B7](#)

Cytogenetics: 11q13.2

Gene Summary: This nuclear gene encodes a 39S subunit component of the mitochondrial ribosome. Alternative splicing results in multiple transcript variants. Pseudogenes for this gene are found on chromosomes 5 and 12. [provided by RefSeq, May 2014]

Product images:



Circular map for RG210613