

Product datasheet for **RG210606**

alpha Synuclein (SNCA) (NM_000345) Human Tagged ORF Clone

Product data:

Product Type: Expression Plasmids
Product Name: alpha Synuclein (SNCA) (NM_000345) Human Tagged ORF Clone
Tag: TurboGFP
Symbol: alpha Synuclein
Synonyms: NACP; PARK1; PARK4; PD1
Mammalian Cell Selection: Neomycin
Vector: pCMV6-AC-GFP (PS100010)
E. coli Selection: Ampicillin (100 ug/mL)
ORF Nucleotide Sequence: >RG210606 representing NM_000345
 Red=Cloning site Blue=ORF Green=Tags(s)

TTTTGTAATACGACTCACTATAGGGCGGCCGGAATTCGTCGACTGGATCCGGTACCGAGGAGATCTGCC
 GCC**CGATCGCC**

ATGGATGTATTCATGAAAGGACTTTCAAAGGCCAAGGAGGGAGTTGTGGCTGCTGCTGAGAAAACCAAAC
 AGGGTGTGGCAGAAGCAGCAGGAAAGACAAAAGAGGGTGTCTCTATGTAGGCTCCAAAACCAAGGAGGG
 AGTGGTGCATGGTGTGGCAACAGTGGCTGAGAAGACCAAAGCAAGTGACAAATGTTGGAGGAGCAGTG
 GTGACGGGTGTGACAGCAGTAGCCAGAAGACAGTGGAGGGAGCAGGGAGCATTGCAGCAGCCACTGGCT
 TTGTCAAAAAGGACCAGTTGGCAAGAATGAAGAAGGAGCCCCACAGGAAGGAATTCTGGAAGATATGCC
 TGTGGATCCTGACAATGAGGCTTATGAAATGCCTTCTGAGGAAGGGTATCAAGACTACGAACCTGAAGCC

ACGCGTACGCGGCCGCTCGAG - GFP Tag - GTTTAA

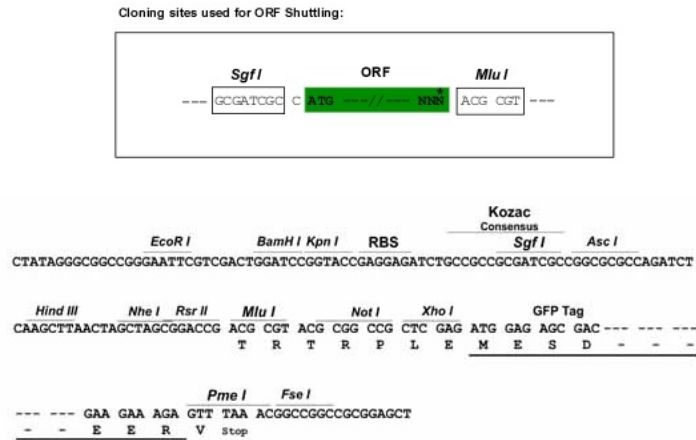
Protein Sequence: >RG210606 representing NM_000345
 Red=Cloning site Green=Tags(s)
 MDVFMKGLSKAKEGVVAAEKTQGVAAEAGKTKEGVLYVGSKTKEGVVHGVATVAEKTKEQVTNVGGAV
 VTGVTAVAQKTVEGAGSIAAATGFVKDQLGKNEEGAPQEGILEDMPVDPDNEAYEMPSEEGYQDYPEPA

TRTRPLE - GFP Tag - V

Restriction Sites: Sgfl-MluI



[View online »](#)

Cloning Scheme:


ACCN: NM_000345

ORF Size: 420 bp

OTI Disclaimer: The molecular sequence of this clone aligns with the gene accession number as a point of reference only. However, individual transcript sequences of the same gene can differ through naturally occurring variations (e.g. polymorphisms), each with its own valid existence. This clone is substantially in agreement with the reference, but a complete review of all prevailing variants is recommended prior to use. [More info](#)

OTI Annotation: This clone was engineered to express the complete ORF with an expression tag. Expression varies depending on the nature of the gene.

Components: The ORF clone is ion-exchange column purified and shipped in a 2D barcoded Matrix tube containing 10ug of transfection-ready, dried plasmid DNA (reconstitute with 100 ul of water).

- Reconstitution Method:**
1. Centrifuge at 5,000xg for 5min.
 2. Carefully open the tube and add 100ul of sterile water to dissolve the DNA.
 3. Close the tube and incubate for 10 minutes at room temperature.
 4. Briefly vortex the tube and then do a quick spin (less than 5000xg) to concentrate the liquid at the bottom.
 5. Store the suspended plasmid at -20°C. The DNA is stable for at least one year from date of shipping when stored at -20°C.

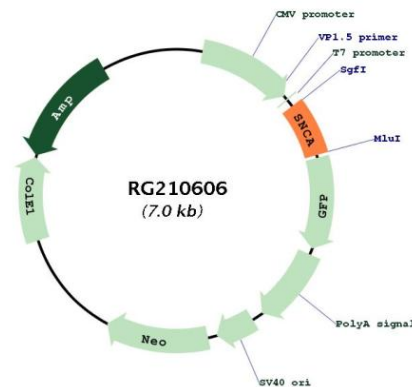
RefSeq: [NM_000345.4](#)

RefSeq Size: 1543 bp

RefSeq ORF: 423 bp

Locus ID:	6622
UniProt ID:	P37840
Cytogenetics:	4q22.1
Domains:	Synuclein
Protein Families:	Druggable Genome
Protein Pathways:	Alzheimer's disease, Parkinson's disease
Gene Summary:	Alpha-synuclein is a member of the synuclein family, which also includes beta- and gamma-synuclein. Synucleins are abundantly expressed in the brain and alpha- and beta-synuclein inhibit phospholipase D2 selectively. SNCA may serve to integrate presynaptic signaling and membrane trafficking. Defects in SNCA have been implicated in the pathogenesis of Parkinson disease. SNCA peptides are a major component of amyloid plaques in the brains of patients with Alzheimer's disease. Alternatively spliced transcripts encoding different isoforms have been identified for this gene. [provided by RefSeq, Feb 2016]

Product images:



Circular map for RG210606