

Product datasheet for **RG210581**

NUP62 (NM_016553) Human Tagged ORF Clone

Product data:

Product Type:	Expression Plasmids
Product Name:	NUP62 (NM_016553) Human Tagged ORF Clone
Tag:	TurboGFP
Symbol:	NUP62
Synonyms:	IBSN; p62; SNDI
Mammalian Cell Selection:	Neomycin
Vector:	pCMV6-AC-GFP (PS100010)
E. coli Selection:	Ampicillin (100 ug/mL)



[View online »](#)

ORF Nucleotide Sequence:

>RG210581 representing NM_016553
 Red=Cloning site Blue=ORF Green=Tags(s)

TTTTGTAATACGACTCACTATAGGGCGGCCGGAATTCGTCGACTGGATCCGGTACCGAGGAGATCTGCC
 GCC**CGGATCGC**

ATGAGCGGGTTTAATTTTGGAGGCACTGGGGCCCCTACAGCGGGTTTACGTTTGGCACTGCAAAGACGG
 CAACAACCACACCTGCTACAGGGTTTTCTTTCTCCACCTCTGGCACTGGAGGGTTTAATTTTGGGGCTCC
 CTTCCAACCAAGCACAAGTACCCCTTCCACCGGCTGTTCTCACTTGCCACCCAGACTCCGGCCACACAG
 ACGACAGGCTTCACTTTTGAACAGCGACTCTTGCTTCGGGGGGAAGTGGATTTTCTTTGGGGATCGGTG
 CTTCAAAGCTCAACTTGAGCAACACAGCTGCCACCCAGCCATGGCAAACCCAGCGGCTTTGGGCTGGG
 CAGCAGCAACCTCACTAATGCCATATCGAGCACCGTCACCTCCAGCCAGGGCACAGCACCCACCGGCTTT
 GTGTTTGGCCCTCCACCACCTCTGTGGCTCCAGTACCACATCTGGAGGCTTCTATTCACTGGTGGAA
 GCACGGCCCAACCTCCGGTTTCAACATTGGCTCAGCAGGGAATTCAGCCAGCCACGGCACCTGCCAC
 GTTGCCCTTCACTCCGGCCACGGCAGCACCACAGCAGGTGCCACACAGCCAGCTGCTCCACACCC
 ACAGCCACCATCACCACTACTGGGCCACGCTCTTTGCGTCAATAGCAACTGCTCCAACCTCATCTGCCA
 CCACTGGACTCTCCCTCTGTACCCTGTGACCACAGCGGGCGCCCCACTGCTGGGACACAGGGCTTCAG
 CTTAAAGGCACCTGGAGCAGCTTCCGGCACCTCCACAACAATCCACCGCTGCCACCGCCACCGCCACC
 ACCACCACAGCAGCAGCACCACCGGCTTTGCCTTGAATTTAAACCACTGGCGCCAGCCGGGATCCCCA
 GCAATACAGCAGCTGCCGTGACCGCTCCACCTGGCCCTGGCGCAGCTGCAGGGGGCGGCTGCCAGCTCCGC
 CATGACCTACGCGCAGCTGGAGAGCCTGATCAACAAATGGAGCCTGGAGCTAGAGGACCAGGAGCGGCAC
 TTCCTCCAGCAGGCCACCCAGGTCAACGCTGGGACCGCACGCTGATCGAGAATGGAGAAAAGATACCA
 GCCTGCACCGCGAGGTGGAGAAGGTGAAGCTGGACCAGAAGAGGCTGGACCAGGAGCTCGACTTCATCCT
 GTCCCAGCAGAAGGAGCTGGAAGACCTGCTGAGCCCACTGGAGGAGTTGGTCAAGGAGCAGAGCGGGACC
 ATCTACCTGCAGCAGCGGATGAGGAGCGTGAGAAAACCTACAAGCTGGCTGAGAACATCGACGCACAGC
 TCAAGCGCATGGCCAGGATCTCAAGGACATCATCGAGCACCTGAACACGTCCGGGGCCCCCGCCGACAC
 CAGTGACCCACTGCAGCAGATCTGCAAGATCCTCAATGCGCACATGGACTCACTGCAGTGGATCGACCAG
 AACTCGGCCCTGCTGCAGAGGAAGGTGGAGGAGGTGACCAAGGTGTGCGAGGGCCGGCGCAAGGAGCAGG
 AGCGCAGCTTCCGGATCACCTTTGAC

ACGCGTACGCGGCCGCTCGAG - GFP Tag - GTTTAA

Protein Sequence:

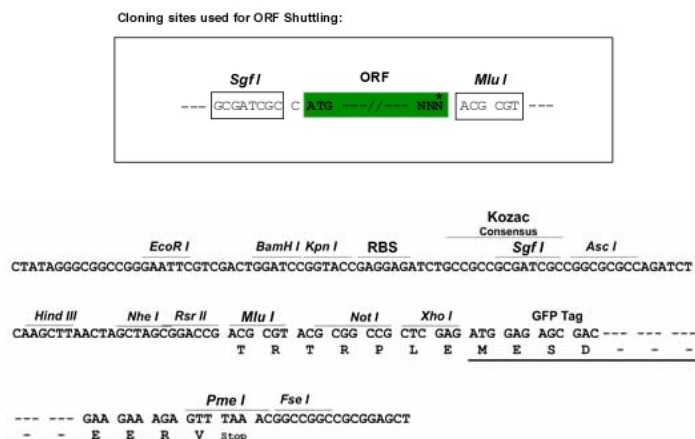
>RG210581 representing NM_016553
 Red=Cloning site Green=Tags(s)

MSGFNFGGTGAPTGGFTFGTAKTATTTTPATGFSFSTSGTGGFNFGAPFPATSTPSTGLFSLATQTPATQ
 TTGFTFGTATLASGGTGFSLGIGASKLNLNNTAATPAMANPSGFLGSSNLNNAISSTVTSSQGTAPTGF
 VFGPSTTSVAPATTSGGFSFTGGSTAQPSGFNIGSAGNSAQPTAPATLPFTPATPAATTAGATQPAAPTP
 TATITSTGPSLFAFIATAPTSSATTGLSLCTPVTTAGAPTAGTQGFSLKAPGAASGTSTTTSTAATATAT
 TTTSSSTTGFAFNKPLAPAGIPSNTAAVTAPPGPAAAGAAASSAMTYAQLESINKWSLELEDQERH
 FLQQATQVNAWDRLLIENGEKITSLEHREVEKVKLDQKRLDQELDFILSQQKELEDLLSPLEELVKEQSGT
 IYLQHADEEREKTYKLAENIDAQLKMAQDLKDIIHLNTSGAPADTSDPLQQICKILNAHMSLQWIDQ
 NSALLQRKVEEVTKVCEGRRKEQERSFRITFD

TRTRPLE - GFP Tag - V

Restriction Sites:

Sgfl-MluI

Cloning Scheme:


ACCN: NM_016553

ORF Size: 1566 bp

OTI Disclaimer: The molecular sequence of this clone aligns with the gene accession number as a point of reference only. However, individual transcript sequences of the same gene can differ through naturally occurring variations (e.g. polymorphisms), each with its own valid existence. This clone is substantially in agreement with the reference, but a complete review of all prevailing variants is recommended prior to use. [More info](#)

OTI Annotation: This clone was engineered to express the complete ORF with an expression tag. Expression varies depending on the nature of the gene.

Components: The ORF clone is ion-exchange column purified and shipped in a 2D barcoded Matrix tube containing 10ug of transfection-ready, dried plasmid DNA (reconstitute with 100 ul of water).

Reconstitution Method:

1. Centrifuge at 5,000xg for 5min.
2. Carefully open the tube and add 100ul of sterile water to dissolve the DNA.
3. Close the tube and incubate for 10 minutes at room temperature.
4. Briefly vortex the tube and then do a quick spin (less than 5000xg) to concentrate the liquid at the bottom.
5. Store the suspended plasmid at -20°C. The DNA is stable for at least one year from date of shipping when stored at -20°C.

RefSeq: [NM_016553.1](#)

RefSeq Size: 3399 bp

RefSeq ORF: 1569 bp

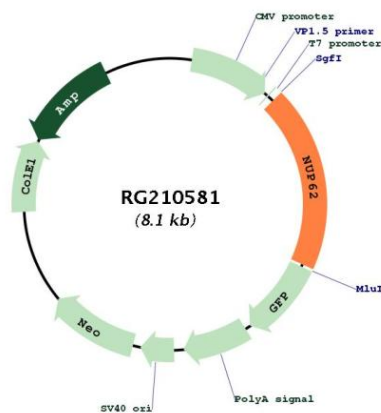
Locus ID: 23636

UniProt ID: [P37198](#)

Cytogenetics: 19q13.33

Domains:	Nsp1_C
Protein Families:	Druggable Genome, Transcription Factors
Gene Summary:	The nuclear pore complex is a massive structure that extends across the nuclear envelope, forming a gateway that regulates the flow of macromolecules between the nucleus and the cytoplasm. Nucleoporins are the main components of the nuclear pore complex in eukaryotic cells. The protein encoded by this gene is a member of the FG-repeat containing nucleoporins and is localized to the nuclear pore central plug. This protein associates with the importin alpha/beta complex which is involved in the import of proteins containing nuclear localization signals. Multiple transcript variants of this gene encode a single protein isoform. [provided by RefSeq, Jul 2008]

Product images:



Circular map for RG210581