

Product datasheet for **RG210542**

TCTEX1D4 (NM_001013632) Human Tagged ORF Clone

Product data:

Product Type: Expression Plasmids
Product Name: TCTEX1D4 (NM_001013632) Human Tagged ORF Clone
Tag: TurboGFP
Symbol: TCTEX1D4
Mammalian Cell Selection: Neomycin
Vector: pCMV6-AC-GFP (PS100010)
E. coli Selection: Ampicillin (100 ug/mL)
ORF Nucleotide Sequence: >RG210542 representing NM_001013632
 Red=Cloning site Blue=ORF Green=Tags(s)

TTTTGTAATACGACTCACTATAGGGCGGCCGGGAATTCGTCGACTGGATCCGGTACCGAGGAGATCTGCC
 GCC**CGATCGCC**

ATGGCCAGCAGGCCTCTGCCCCCGGGACGCCAGGAGGAGAGAATGCCAAAGACTCCGGGCGGAAACCCCT
 CACCGGTGCGGCCCGGAGGCTGCCTGCCAGCATTGATGAGGCCCGACCGGCAGGTCCAGGTCCAGCCCC
 GGCTCGCGCCGGGGCTCCATGCTGGGCTGGCCGCGTCTTCTCCCGCCGAACTCGTTGGTCGGGCCA
 GGCGGGGTCTGGGGTCAAGGTCAGCGCCATCCCTGGGCCCGGTGCCCTCTGGGCTCAAGGTCAGCTTCT
 CAGGGTTGCCCTGGCGCCCGCCGTTGGGTGGCGCCCTCCTACCGCACGGAGCCAGTCCCGGGGAGCG
 CTGGGAGGCTGCGCGTGACAGCGTGCCCTGGAGCGGCGCTGGCCGACGGGCTGCACGACGCGTGTACT
 TCCAGCGACGAGCCGCGCGGCTGGTGGCGGAGCTCTGCGAGCAGGTGCACGTTCCGCTGCGCGAGCTCA
 GCCCGCCACGCTACAAGCTGGTATGCAGTGTGGTGTGGGGCCGCGCGGGCCAGGGCCTTACAGTGGT
 CAGCCGTGCGCTCTGGGACGTGGCGCGGATGGGCTGGCTCGGTCTCTACACCAACACCTCGCTCTTC
 GCGGTGGCCACGGTCCACGGGCTCTACTGCGAG

AG**CGGACCG**ACGCGTACGCGGCCGCTCGAG - GFP Tag - GTTTAA

Protein Sequence: >RG210542 representing NM_001013632
 Red=Cloning site Green=Tags(s)

MASRPLPPGRQEEENAKDSGRKPSVPRGCLPSIDEARPAGPGPAPASRRGSMGLAASFRRNSLVGP
 GAGPGGQRPSLGPVPLGSRVFSGLPLAPARWVAPSYRTEPVPGERWEAARAQRALEAALAAGLHDACY
 SSDEAARLVRELCEQVHVRLRELSPRYKLVCSVVLGPRAGQGVHVSRALWDVARDGLASVSYTNTSLF
 AVATVHGLYCE

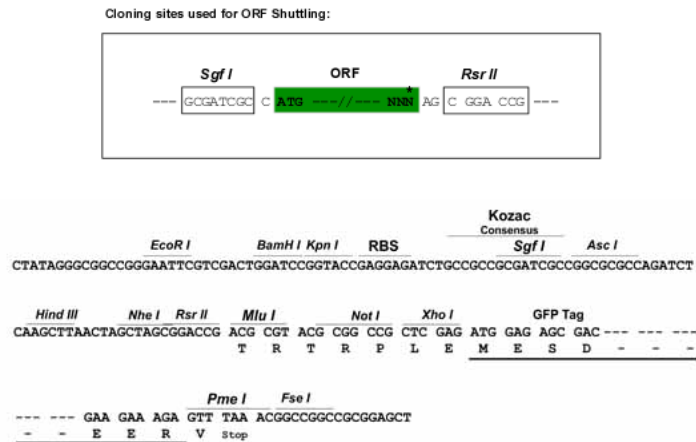
SGP**TRRRLE** - GFP Tag - V



[View online »](#)

Restriction Sites: SgfI-RsrII

Cloning Scheme:



ACCN: NM_001013632

ORF Size: 663 bp

OTI Disclaimer: The molecular sequence of this clone aligns with the gene accession number as a point of reference only. However, individual transcript sequences of the same gene can differ through naturally occurring variations (e.g. polymorphisms), each with its own valid existence. This clone is substantially in agreement with the reference, but a complete review of all prevailing variants is recommended prior to use. [More info](#)

OTI Annotation: This clone was engineered to express the complete ORF with an expression tag. Expression varies depending on the nature of the gene.

Components: The ORF clone is ion-exchange column purified and shipped in a 2D barcoded Matrix tube containing 10ug of transfection-ready, dried plasmid DNA (reconstitute with 100 ul of water).

Reconstitution Method:

1. Centrifuge at 5,000xg for 5min.
2. Carefully open the tube and add 100ul of sterile water to dissolve the DNA.
3. Close the tube and incubate for 10 minutes at room temperature.
4. Briefly vortex the tube and then do a quick spin (less than 5000xg) to concentrate the liquid at the bottom.
5. Store the suspended plasmid at -20°C. The DNA is stable for at least one year from date of shipping when stored at -20°C.

RefSeq: [NM_001013632.3](#)

RefSeq Size: 1278 bp

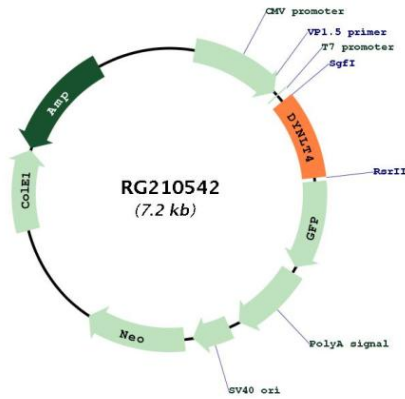
RefSeq ORF: 666 bp

Locus ID: 343521

UniProt ID: [Q5JR98](#)

Cytogenetics: 1p34.1

Product images:



Circular map for RG210542