

Product datasheet for **RG210499**

VPS26B (NM_052875) Human Tagged ORF Clone

Product data:

Product Type:	Expression Plasmids
Product Name:	VPS26B (NM_052875) Human Tagged ORF Clone
Tag:	TurboGFP
Symbol:	VPS26B
Synonyms:	Pep8b
Mammalian Cell Selection:	Neomycin
Vector:	pCMV6-AC-GFP (PS100010)
E. coli Selection:	Ampicillin (100 ug/mL)
ORF Nucleotide Sequence:	>RG210499 representing NM_052875 Red=Cloning site Blue=ORF Green=Tags(s)

TTTTGTAATACGACTCACTATAGGGCGGCCGGAATTCGTCGACTGGATCCGGTACCGAGGAGATCTGCC
GCC**CGATCGCC**

ATGAGTCTCTCGGCTTCGGCCAGAGCGTGGAGGTGAAATCCTTCTGAACGATGCAGAGAGTAGGAAGC
GGGCCGAGCACAAGACGGAGGACGGGAAGAAGGAGAAATATTTCTCTTCTACGACGGGAGACGGTCTC
CGGAAGGTGAGCCTTGCCCTCAGGAACCCCAACAAGCGGCTGGAGCACCAGGGCATCAAGATCGAGTTC
ATCGGCAGATCGAACTCTACTACGATCGCGGGAACCACCATGAGTTTGTGTCCCTGGTGAAGGACCTGG
CCCGCCTGGAGAGATCACCCAGTCGCAGGCCTTCGACTTTGAGTTTACCCACGTGGAGAAGCCGTATGA
GTCTACACAGGGCAGAAATGTGAAGCTACGCTATTTCTTCGTGCTACCATCAGCCCGCCTCAATGAT
GTTGTCAAAGAGATGGACATTGTAGTTCACACACTCAGCAGATACCCAGAGCTGAACTCTTCCATCAAGA
TGGAGGTTGGGATTGAGGACTGTCTGCACATTGAATTTGAGTACAATAAATCCAAATACCACTTGAAGA
TGTCAATGTAGGGAAGATATACTTCTGCTGGTGAGAATCAAAATCAAGCACATGGAGATAGACATCATC
AAGCGAGAAACGACGGGTACAGGCCCAACGTGTACCATGAGAATGACACGATAGCCAAGTACGAGATCA
TGGACGGGGCACCAGTGCAGGAGATCCATCCCGATCCGGCTCTTCTGGCCGGTATGAGCTCACGCC
CACCATGCGGGACATCAACAAGAAGTTCTGTGCGCTATTACCTCAACCTGGTGTGATAGACGAGGAG
GAGCGGCGCTACTTCAAGCAGCAGGAAGTGGTGTGCGGGAAGGGTGACATCGTACGGAAGAGCATGT
CCACCAGGCGGCATCGCCTCACAGCGCTTTGAGGGCACCACCTCCCTGGGTGAGGTGCCGACCCCCAG
CCAGCTGTCTGACAACAACTGCAGGCAG

ACGCGTACGCGGCCGCTCGAG - GFP Tag - GTTTAA



[View online »](#)

Protein Sequence: >RG210499 representing NM_052875
Red=Cloning site Green=Tags(s)

MSFFFGQSVEVEILLNDAESRKRAEHKTEDGKKEKYFLFYDGETVSGKVSLALRNPKNRLEHQGKIEF
 IGQIELYYDRGNHHEFVSLVKDLARPGEITQSQAFDFEFTHVEKPYESYTGQNVKLYFLRATISRRLND
 VVKEMDIVVHTLSTYPELNSSIKMEVGIEDCLHIEFEYNKSKYHLKDVI VGKIYFLLVRIKIKHMEIDII
 KRETTGTGPNVYHENDTIAKYEIMDGAPVRGESIPIRLFLAGYELTPTMRDINKKF SVRYYLNLVLI DEE
 ERRYFKQQEVVLWRKGDIVRKSMSHQAAIASQRFEGTSSLGEVRTPSQLSDNNCRQ

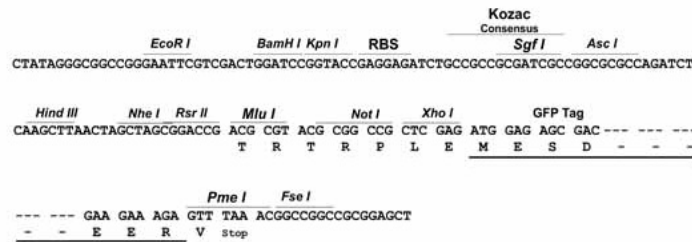
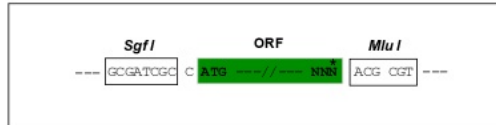
TRTRPLE - GFP Tag - V

Restriction Sites:

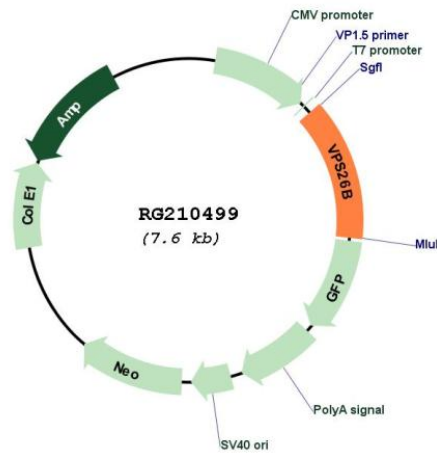
Sgfl-MluI

Cloning Scheme:

Cloning sites used for ORF Shuttling:



Plasmid Map:



ACCN: NM_052875

ORF Size: 1008 bp

OTI Disclaimer:	The molecular sequence of this clone aligns with the gene accession number as a point of reference only. However, individual transcript sequences of the same gene can differ through naturally occurring variations (e.g. polymorphisms), each with its own valid existence. This clone is substantially in agreement with the reference, but a complete review of all prevailing variants is recommended prior to use. More info
OTI Annotation:	This clone was engineered to express the complete ORF with an expression tag. Expression varies depending on the nature of the gene.
Components:	The ORF clone is ion-exchange column purified and shipped in a 2D barcoded Matrix tube containing 10ug of transfection-ready, dried plasmid DNA (reconstitute with 100 ul of water).
Reconstitution Method:	<ol style="list-style-type: none">1. Centrifuge at 5,000xg for 5min.2. Carefully open the tube and add 100ul of sterile water to dissolve the DNA.3. Close the tube and incubate for 10 minutes at room temperature.4. Briefly vortex the tube and then do a quick spin (less than 5000xg) to concentrate the liquid at the bottom.5. Store the suspended plasmid at -20°C. The DNA is stable for at least one year from date of shipping when stored at -20°C.
RefSeq:	NM_052875.3 , NP_443107.1
RefSeq Size:	3685 bp
RefSeq ORF:	1011 bp
Locus ID:	112936
UniProt ID:	Q4G0F5
Cytogenetics:	11q25
Domains:	Vps26
Gene Summary:	Acts as component of the retromer cargo-selective complex (CSC). The CSC is believed to be the core functional component of retromer or respective retromer complex variants acting to prevent missorting of selected transmembrane cargo proteins into the lysosomal degradation pathway. The recruitment of the CSC to the endosomal membrane involves RAB7A and SNX3. The SNX-BAR retromer mediates retrograde transport of cargo proteins from endosomes to the trans-Golgi network (TGN) and is involved in endosome-to-plasma membrane transport for cargo protein recycling. The SNX3-retromer mediates the retrograde transport of WLS distinct from the SNX-BAR retromer pathway. The SNX27-retromer is believed to be involved in endosome-to-plasma membrane trafficking and recycling of a broad spectrum of cargo proteins. The CSC seems to act as recruitment hub for other proteins, such as the WASH complex and TBC1D5. May be involved in retrograde transport of SORT1 but not of IGF2R. Acts redundantly with VSP26A in SNX-27 mediated endocytic recycling of SLC2A1/GLUT1 (By similarity).[UniProtKB/Swiss-Prot Function]