

Product datasheet for **RG210480**

CAPZB (NM_004930) Human Tagged ORF Clone

Product data:

Product Type:	Expression Plasmids
Product Name:	CAPZB (NM_004930) Human Tagged ORF Clone
Tag:	TurboGFP
Symbol:	CAPZB
Synonyms:	CAPB; CAPPB; CAPZ
Mammalian Cell Selection:	Neomycin
Vector:	pCMV6-AC-GFP (PS100010)
E. coli Selection:	Ampicillin (100 ug/mL)
ORF Nucleotide Sequence:	>RG210480 representing NM_004930 Red=Cloning site Blue=ORF Green=Tags(s)

TTTTGTAATACGACTCACTATAGGGCGGCCGGAATTCGTCGACTGGATCCGGTACCGAGGAGATCTGCC
GCC**CGATCGCC**

ATGAGTGATCAGCAGCTGGACTGTGCCTTGGACCTAATGAGGCGCCTGCCTCCCCAGCAAATCGAGAAAA
ACCTCAGCGACCTGATCGACCTGGTCCCCAGTCTATGTGAGGATCTCCTGTCTTCTGTTGACCAGCCACT
GAAAATTGCCAGAGACAAGGTGGTGGGAAAGGATTACCTTTTGTGTGACTACAACAGAGATGGGGACTCC
TATAGGTCACCATGGAGTAACAAGTATGACCCTCCCTTGGAGGATGGGGCCATGCCGTGAGCTCGGCTGA
GAAAGCTGGAGGTGGAAGCCAACAATGCCTTTGACCAGTATCGAGACCTGTATTTGAAGGTGGCGTCTC
ATCTGTCTACCTCTGGGATCTGGATCATGGCTTTGCTGGAGTGATCCTCATAAAGAAGGCTGGAGATGGA
TCAAAGAAGATCAAAGGCTGCTGGGATTCCATCCACGTGGTAGAAGTGCAGGAGAAAATCCAGCGGTCGCA
CCGCCATTACAAGTTGACCTCCACGGTGATGCTGTGGCTGCAGACCAACAAATCTGGCTCTGGCACCAT
GAACCTCGGAGGCAGCCTTACCAGACAGATGGAGAAGGATGAAACTGTGAGTGACTGCTCCCCACACATA
GCCAACATCGGGCGCCTGGTAGAGGACATGGAAAATAAAATCAGAAGTACGCTGAACGAGATCTACTTTG
GAAAAACAAGGATATCGTCAATGGGCTGAGGTCTGTGCAGACTTTTGCAGACAAATCAAAAACAAGAAGC
TCTGAAGAATGACCTGGTGGAGGCTTTGAAGAGAAAAGCAGCAATGC

ACGCGTACGCGGCCGCTCGAG - GFP Tag - GTTTAA



[View online »](#)

Protein Sequence: >RG210480 representing NM_004930
 Red=Cloning site Green=Tags(s)

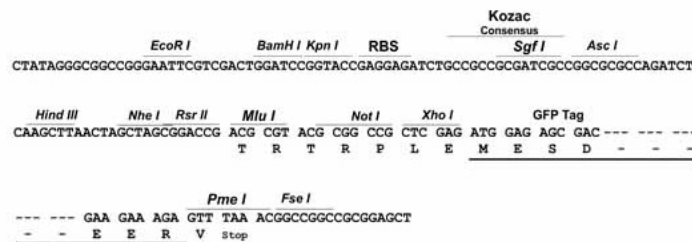
MSDQQLDCALDLMRRLPPQQIEKNLSLIDLVPSLCEDLLSSVDQPLKIARDKVVGKDYLLCDYNRDGDS
 YRSPWSNKYDPPLEDGAMP SARLRKLEVEANNAFDQYRDL YFEGGVSSVYLWLDHGFAGVILIKKAGDG
 SKKIKGCWDSIHVVEVQEKSSGRTAHYKLTSTVMLWLQTNKSGSGTMNLGGSLTRQMEKDETVSDCSPHI
 ANIGRLVEDMENKIRSTLNEIYFGTKTDIVNGLRSVQTFADKSKQEALKNDLVEALKRKQQC

TRTRPLE - GFP Tag - V

Restriction Sites: SgfI-MluI

Cloning Scheme:

Cloning sites used for ORF Shutting:



ACCN: NM_004930

ORF Size: 816 bp

OTI Disclaimer: The molecular sequence of this clone aligns with the gene accession number as a point of reference only. However, individual transcript sequences of the same gene can differ through naturally occurring variations (e.g. polymorphisms), each with its own valid existence. This clone is substantially in agreement with the reference, but a complete review of all prevailing variants is recommended prior to use. [More info](#)

OTI Annotation: This clone was engineered to express the complete ORF with an expression tag. Expression varies depending on the nature of the gene.

Components: The ORF clone is ion-exchange column purified and shipped in a 2D barcoded Matrix tube containing 10ug of transfection-ready, dried plasmid DNA (reconstitute with 100 ul of water).

Reconstitution Method:

1. Centrifuge at 5,000xg for 5min.
2. Carefully open the tube and add 100ul of sterile water to dissolve the DNA.
3. Close the tube and incubate for 10 minutes at room temperature.
4. Briefly vortex the tube and then do a quick spin (less than 5000xg) to concentrate the liquid at the bottom.
5. Store the suspended plasmid at -20°C. The DNA is stable for at least one year from date of shipping when stored at -20°C.

RefSeq: [NM_004930.5](#)

RefSeq Size: 1647 bp

RefSeq ORF: 819 bp

Locus ID: 832

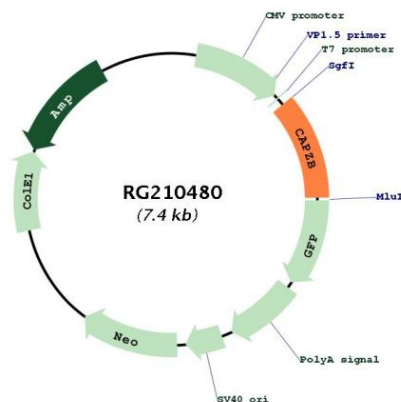
UniProt ID: [P47756](#)

Cytogenetics: 1p36.13

Domains: F_actin_cap_B

Gene Summary: This gene encodes the beta subunit of the barbed-end actin binding protein, which belongs to the F-actin capping protein family. The capping protein is a heterodimeric actin capping protein that blocks actin filament assembly and disassembly at the fast growing (barbed) filament ends and functions in regulating actin filament dynamics as well as in stabilizing actin filament lengths in muscle and nonmuscle cells. A pseudogene of this gene is located on the long arm of chromosome 2. Multiple alternatively spliced transcript variants encoding different isoforms have been found.[provided by RefSeq, Aug 2013]

Product images:



Circular map for RG210480