

## Product datasheet for **RG210413**

### SCARA3 (NM\_016240) Human Tagged ORF Clone

#### Product data:

Product Type:	Expression Plasmids
Product Name:	SCARA3 (NM_016240) Human Tagged ORF Clone
Tag:	TurboGFP
Symbol:	SCARA3
Synonyms:	APC7; CSR; CSR1; MSLR1; MSRL1
Mammalian Cell Selection:	Neomycin
Vector:	pCMV6-AC-GFP (PS100010)
E. coli Selection:	Ampicillin (100 ug/mL)



[View online »](#)

**ORF Nucleotide Sequence:**

>RG210413 representing NM\_016240  
 Red=Cloning site Blue=ORF Green=Tags(s)

TTTTGTAATACGACTCACTATAGGGCGGCCGGAATTCGTCGACTGGATCCGGTACCGAGGAGATCTGCC  
 GCC**CGGATCGCC**

ATGAAAGTGGAGTGGCCGGCGCGGATGGAGATGCCTTGTGCGTTACAGAAGAGGACCTGGCGGGTGACG  
 ACGAGGACATGCCGACCTTCCCATGCACCCAGAAGGGCCGGCCAGGGCCCGCTGCAGCCGCTGCCAGAA  
 GAACCTATCTTTGCACACATCGGTGCGGATTCTTTACCTCTTCTGCGCCCTGCTCCTGGTGGCCGTGGCT  
 GTGTTGGCCTCTCTGGTTTTAGAAAAGTGGACTCTCTCCGAAGACATCTCCTTGACCCAGTCTATTT  
 ATGACAAGAAGCTTGTGTTAATGCAGAAAAATCTCCAGGGCCTGGATCCGAAAGCCCTGAACAACCTGCTC  
 TTTCTGCCATGAAGCTGGGCAGCTGGGGCCAGAGATCCGAAAACCTGCAGGAGGAGCTGGAGGGAATTCAG  
 AAGCTGCTTCTGGCCAGGAGGTGCAGCTGGACCAGACCTTACAGGCCAGGAGGTCTCCACCACCA  
 GCAGACAAATCTCCAGGAGATGGGCAGTTGCTCCTTCCATCCACCAGTTAACCCAGTCTCTGGGGCT  
 CTTCTGGCCAGGTGAGAGGCTGGCAGGCCACCACAGCTGGCCTGGACCTCTCTGAAGGACCTCACC  
 CAGGAGTGTACGATGTCAAGGCTGCAGTGCACCAGATCAACTTACCCGTGGGGCAGACTTCCGAGTGGA  
 TCCACGGGATCCAGCGGAAGACAGACGAGGAGACCCTGACCCCTCCAGAAGATTGTACCCGACTGGCAGAA  
 CTACACACGGCTCTTACGCGCCTGCGCACCCACCTCCACCAAGACTGGAGAGGGCGTCAAGAACATCCAG  
 GCCACCTGGGGGCTCCTCACAGCGCATCAGCCAGAACTCAGAGAGCATGCACGACCTGGTACTCCAGG  
 TCATGGGCTTGCAGCTGCAGCTGGATAACATCTCGTCTTCTGGATGACCACGAAGAGAACATGCATGA  
 TCTTCAGTACCATAACCCACTACGCCCAGAACCCGACTGTGGAGAGGTTTGTAGTCTCTGGAAGGACGCATG  
 GCTTCTCAGGAGATTGAAATTGGCACCATCTTACCAACATCAATGCCACCGACAACCACGTGCACAGCA  
 TGCTCAAGTACCTGGATGACGTGCGGCTCTCCTGCACGCTGGGCTTCCACACCCATGCCGAGGAGCTCTA  
 CTACCTGAACAAGTCTGTCTCCATCATGCTGGGCACCACAGACCTGCTCCGGGAGCGCTTACGCCTGCTC  
 AGTGCCCGGCTGGACCTCAACGTCCGGAACCTCTCCATGATCGTGGAGGAGATGAAGGCAGTGGACACAC  
 AGCATGGAGAAATCCTTCGCAATGTACCATCCTACGAGGTGCCCGGCCCTCCAGGACCAAGAGGATT  
 CAAAGGAGATATGGGCGTAAAGGGCCTGTTGGCGGCAGAGGCCGAAAGGAGACCCCGGCAGCTTGGGC  
 CCCCTGGGACCCAGGGTCTCAGGGGCAACCTGGAGAGGCCGGGCTGTGGGAGAAAGGGCCCTGTTG  
 GCCCTCGAGGGTCCCAGGCCTCAAAGGCTCAAAGGGCAGCTTTGAACTGGAGGGCCGAGAGGACAGCC  
 AGGCCAAAAGGGGACATAGGGCCCCAGGGCCAGAAGGGCCCCGGGTCTCCAGGGCCCTCAGGGCT  
 CAGGGAAAACCGGAATTGCAGGAAGACAGGGTACCAGGCCAGCGGGGGCCATGGGGCCTAAGGGTG  
 AACCGGGATCCAGGGTCCCCCTGGTCTCCCGGGCCTCCAGGTCCACCAGGAAGCCAGAGCTTCTAC

**ACGCGTACGCGGCCGCTCGAG** – GFP Tag – GTTTAA

**Protein Sequence:**

>RG210413 representing NM\_016240  
 Red=Cloning site Green=Tags(s)

MKVRSAAGDGDALCVTEEDLAGDDEDMPTFPCTQKGRPGPRCSRCQKNLSLHTSVRILYLFLALLLVAVA  
 VLASLVFRKVDLSLSEISLTQSIYDKKLVLMQKNLQGLDPKALNNSFCHEAGQLGPEIRKLQEELEGIQ  
 KLLLAQEVQLDQTLQAQEVLSTTSRQISQEMGSCSFSIHQVNSLGLFLAQVRGWQATTAGLDLSLKDIT  
 QECYDVKAHVHINFTVQGTSEWIHQIRKTDEETLTLQKIVTDWQNYTRLFSGLRSTSTKTGEAVKNIQ  
 ATLGASSQRISQNSESMHDLVLQVMGLQLQLDNISFLLDDHEENMHDLYHHTHYAQNRTVERFESLEGRM  
 ASHEIEIGTIFTNINATDNHVSMLKYLDDVRLSCTLGFHTHAEELYLNKSVSIMLGTTDLLRERFSLL  
 SARLDLNVRLSMIVEEMKAVDTQHGEILRNVTILRGAPPPPGRGFKGDMGVKGPVGGGPKGDPGSLG  
 PLGPPQGPQGPGEAGPVGERGPVGRGFPGLKGSKGSFTGGPRGQPGPKGDIIGPPGPEGPPGSPGSPG  
 QKPGIAGKTGSPQRGAMGPKGEPGIQPPPLGPPGPPGSQSFY

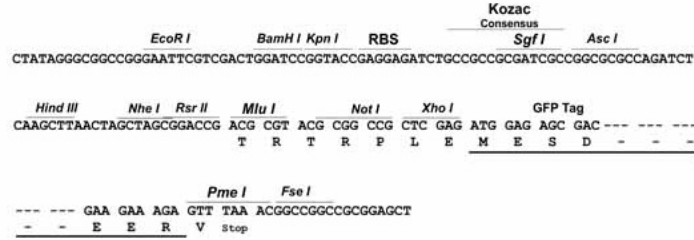
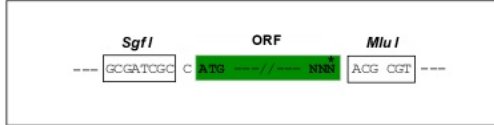
**TRTRPLE** – GFP Tag – V

**Restriction Sites:**

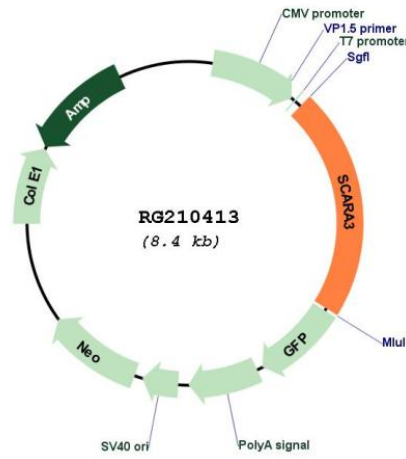
Sgfl-MluI

Cloning Scheme:

Cloning sites used for ORF Shutting:



Plasmid Map:



ACCN: NM\_016240

ORF Size: 1818 bp

<b>OTI Disclaimer:</b>	The molecular sequence of this clone aligns with the gene accession number as a point of reference only. However, individual transcript sequences of the same gene can differ through naturally occurring variations (e.g. polymorphisms), each with its own valid existence. This clone is substantially in agreement with the reference, but a complete review of all prevailing variants is recommended prior to use. <a href="#">More info</a>
<b>OTI Annotation:</b>	This clone was engineered to express the complete ORF with an expression tag. Expression varies depending on the nature of the gene.
<b>Components:</b>	The ORF clone is ion-exchange column purified and shipped in a 2D barcoded Matrix tube containing 10ug of transfection-ready, dried plasmid DNA (reconstitute with 100 ul of water).
<b>Reconstitution Method:</b>	<ol style="list-style-type: none"><li>1. Centrifuge at 5,000xg for 5min.</li><li>2. Carefully open the tube and add 100ul of sterile water to dissolve the DNA.</li><li>3. Close the tube and incubate for 10 minutes at room temperature.</li><li>4. Briefly vortex the tube and then do a quick spin (less than 5000xg) to concentrate the liquid at the bottom.</li><li>5. Store the suspended plasmid at -20°C. The DNA is stable for at least one year from date of shipping when stored at -20°C.</li></ol>
<b>RefSeq:</b>	<a href="#">NM_016240.3</a>
<b>RefSeq Size:</b>	3631 bp
<b>RefSeq ORF:</b>	1821 bp
<b>Locus ID:</b>	51435
<b>UniProt ID:</b>	<a href="#">Q6AZY7</a>
<b>Cytogenetics:</b>	8p21.1
<b>Domains:</b>	Collagen
<b>Protein Families:</b>	Druggable Genome, Transmembrane
<b>Gene Summary:</b>	This gene encodes a macrophage scavenger receptor-like protein. This protein has been shown to deplete reactive oxygen species, and thus play an important role in protecting cells from oxidative stress. The expression of this gene is induced by oxidative stress. Alternatively spliced transcript variants encoding distinct isoforms have been described. [provided by RefSeq, Jul 2008]