

Product datasheet for **RG210389**

Dopamine Receptor D1 (DRD1) (NM_000794) Human Tagged ORF Clone

Product data:

Product Type:	Expression Plasmids
Product Name:	Dopamine Receptor D1 (DRD1) (NM_000794) Human Tagged ORF Clone
Tag:	TurboGFP
Symbol:	Dopamine Receptor D1
Synonyms:	DADR; DRD1A
Mammalian Cell Selection:	Neomycin
Vector:	pCMV6-AC-GFP (PS100010)
E. coli Selection:	Ampicillin (100 ug/mL)



[View online »](#)

ORF Nucleotide Sequence:

>RG210389 representing NM_000794
 Red=Cloning site Blue=ORF Green=Tags(s)

TTTTGTAATACGACTCACTATAGGGCGGCCGGAATTCGTCGACTGGATCCGGTACCGAGGAGATCTGCC
 GCCGCGATCGCC

ATGAGGACTCTGAACACCTCTGCCATGGACGGGACTGGGCTGGTGGTGGAGAGGGACTTCTCTGTTCGTA
 TCCTCACTGCCTGTTTCCTGTCGCTGCTCATCCTGTCCACGCTCCTGGGGAACACGCTGGTCTGTGCTGC
 CGTTATCAGGTTCCGACACCTGCGGTCCAAGGTGACCAACTTCTTTGTCATCTCCTTGGCTGTGTGAGAT
 CTCTTGGTGGCCGCTCTGGTTCATGCCCTGGAAGGCAGTGGCTGAGATTGCTGGCTTCTGGCCCTTTGGGT
 CCTTCTGTAACATCTGGGTGGCCTTTGACATCATGTGCTCCACTGCATCCATCCTCAACCTCTGTGTGAT
 CAGCGTGGACAGGATTGGGCTATCTCCAGCCCTTCCGGTATGAGAGAAAGATGACCCCAAGGCAGCC
 TTCATCCTGATCAGTGTGGCATGGACCTGTCTGTACTCATCTCCTTATCCCAGTGCAGCTCAGCTGGC
 ACAAGGCAAAACCCACAAGCCCTCTGATGAAATGCCACTTCCCTGGCTGAGACCATAGACAACCTGTGA
 CTCAGCCTCAGCAGGACATATGCCATCTCATCCTCTGTAATAAGCTTTTACATCCTGTGGCCATCATG
 ATTGTCACCTACACCAGGATCTACAGGATTGCTCAGAAACAAATACGGCGCATTGCGGCCTTGGAGAGGG
 CAGCAGTCCACGCCAAGAATTGCCAGACCACCACAGGTAATGAAAGCCTGTGCAATGTTCTCAACCGGA
 AAGTTCTTTAAGATGTCCTTCAAAGAGAAAATAAAGTCTGAAGACTCTGTGCGGTGATCATGGGTGTG
 TTTGTGTGCTGTTGGCTACCTTCTTATCTTGAAGTGCATTTTGCCTTCTGTGGGTCTGGGGAGACGC
 AGCCCTTCTGCATTGATTCACACCTTTGACGTGTTGTGTGGTTTGGGTGGGTAATTCATCCTTGAA
 CCCCATCATTTATGCCTTAAATGCTGATTTTCGGAAGGCATTTTCAACCTCTTAGGATGCTACAGACTT
 TGCCCTGCGACGAATAATGCCATAGAGACGGTGAATCAATAACAATGGGGCCGCGATGTTTTCCAGCC
 ATCATGAGCCACGAGGCTCCATCTCCAAGGAGTGAATCTGTTTACCTGATCCCACATGCTGTGGGCTC
 CTCTGAGGACCTGAAAAAGGAGGAGGCAGCTGGCATCGCCAGACCTTGGAGAAGCTGTCCCAGCCCTA
 TCGGTCATATTGACTATGACACTGACGTCTCTGAGAGAAGATCCAACCCATCACAAAAACGGTCAGC
 ACCCAACC

ACGCGTACGCGGCCGCTCGAG – GFP Tag – GTTTAA

Protein Sequence:

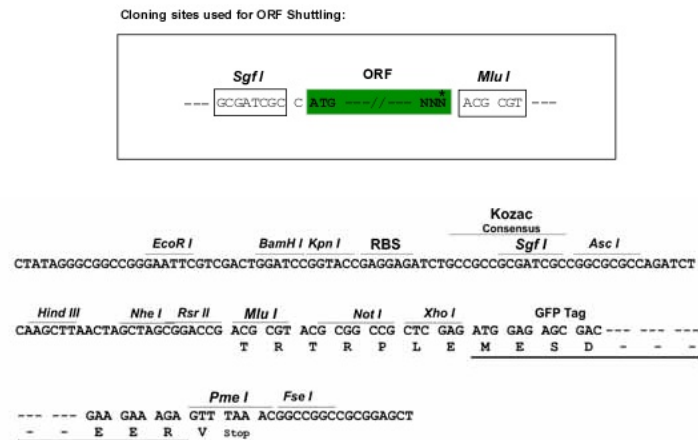
>RG210389 representing NM_000794
 Red=Cloning site Green=Tags(s)

MRTLNTSAMDGTGLVVERDFSVRILTACFLSLLILSTLLGNTLVCAAVIRFRHLRSKVTNFFVISLAVSD
 LLVAVLVMPWKAVAEIAGFWPFGSFCNIWVAFDIMCSTASILNLCVISVDRYWAISSPFRYERKMPKAA
 FILISVAWTLVSLISFIPVQLSWHKAKPTSPSDGNATSLAETIDNCDSSLRITYAISSSVISFYIPVAIM
 IVTYTRIVRIAQKQIRRIAALERA AVHAKNCQTTTNGKPVESQPESSFKMSFKRETKVLKTLVIMGV
 FVCCWLPFFILNCILPFCGSETQPFCDISNTFDVFWFGWANSSLNPIIYAFNADFRKAFSTLLGCYRL
 CPATNNAIETVSI NNNGAAMFSSHHEPRGSI SKECNLYLIPHAVGSSSEDLKKEEAAGIARPLEKLSPAL
 SVILDYD TDVSLEKIQPITQNGQHPT

TRTRPLE – GFP Tag – V

Restriction Sites:

SgfI-MluI

Cloning Scheme:


ACCN: NM_000794

ORF Size: 1338 bp

OTI Disclaimer: The molecular sequence of this clone aligns with the gene accession number as a point of reference only. However, individual transcript sequences of the same gene can differ through naturally occurring variations (e.g. polymorphisms), each with its own valid existence. This clone is substantially in agreement with the reference, but a complete review of all prevailing variants is recommended prior to use. [More info](#)

OTI Annotation: This clone was engineered to express the complete ORF with an expression tag. Expression varies depending on the nature of the gene.

Components: The ORF clone is ion-exchange column purified and shipped in a 2D barcoded Matrix tube containing 10ug of transfection-ready, dried plasmid DNA (reconstitute with 100 ul of water).

Reconstitution Method:

1. Centrifuge at 5,000xg for 5min.
2. Carefully open the tube and add 100ul of sterile water to dissolve the DNA.
3. Close the tube and incubate for 10 minutes at room temperature.
4. Briefly vortex the tube and then do a quick spin (less than 5000xg) to concentrate the liquid at the bottom.
5. Store the suspended plasmid at -20°C. The DNA is stable for at least one year from date of shipping when stored at -20°C.

RefSeq: [NM_000794.3](#), [NP_000785.1](#)

RefSeq Size: 3373 bp

RefSeq ORF: 1341 bp

Locus ID: 1812

UniProt ID: [P21728](#)

Cytogenetics: 5q35.2

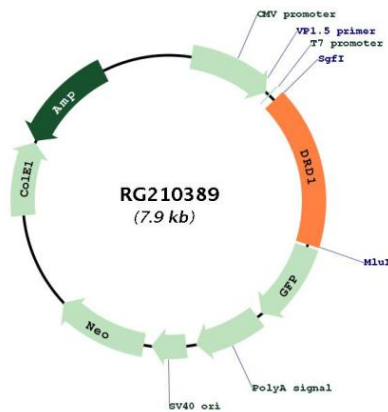
Domains: 7tm_1

Protein Families: Druggable Genome, GPCR, Transmembrane

Protein Pathways: Calcium signaling pathway, Gap junction, Neuroactive ligand-receptor interaction

Gene Summary: This gene encodes the D1 subtype of the dopamine receptor. The D1 subtype is the most abundant dopamine receptor in the central nervous system. This G-protein coupled receptor stimulates adenylyl cyclase and activates cyclic AMP-dependent protein kinases. D1 receptors regulate neuronal growth and development, mediate some behavioral responses, and modulate dopamine receptor D2-mediated events. Alternate transcription initiation sites result in two transcript variants of this gene. [provided by RefSeq, Jul 2008]

Product images:



Circular map for RG210389