

## Product datasheet for **RG210386**

### gamma C Crystallin (CRYGC) (NM\_020989) Human Tagged ORF Clone

#### Product data:

**Product Type:** Expression Plasmids  
**Product Name:** gamma C Crystallin (CRYGC) (NM\_020989) Human Tagged ORF Clone  
**Tag:** TurboGFP  
**Symbol:** gamma C Crystallin  
**Synonyms:** CCL; CRYG3; CTRCT2  
**Mammalian Cell Selection:** Neomycin  
**Vector:** pCMV6-AC-GFP (PS100010)  
**E. coli Selection:** Ampicillin (100 ug/mL)  
**ORF Nucleotide Sequence:** >RG210386 representing NM\_020989  
Red=Cloning site Blue=ORF Green=Tags(s)

TTTTGTAATACGACTCACTATAGGGCGCCGGGAATTCGTCGACTGGATCCGGTACCGAGGAGATCTGCC  
GCC**CGATCGCC**

ATGGGGAAGATCACCTTCTATGAGGACAGGGCCTTCCAGGGCCGAGCTACGAAACCACCACTGACTGCC  
CCAACCTCGAGCCGTATTTAGCCGCTGCAACTCCATCCGGTGGAGAGCGGCTGCTGGATGCTCTATGA  
GCGTCCCAACTACCAAGGTCAACAATACTTGTGCGGCGAGGGGAGTACCCCGACTACCAGCAATGGATG  
GGCCTCAGCGACTCCATCCGCTCCTGTTGTCTCATCCCCAAACAGTCTCCACAGGCTGCGGCTGTACG  
AGAGGGAAGACCACAAAGCCTCATGATGGAGCTGAGTGAAGACTGCCCCAGCATCCAGGACCGCTCCA  
CCTCAGCGAGATCCGTTCCCTCCAGTGTGGAGGGCTGCTGGTCTCTACGAGCTGCCAACTACCGG  
GGCGGCAATACCTGCTGAGGCCCAAGAGTACAGGCGGTGCCAGGACTGGGGGCCATGGATGCTAAGG  
CAGGCTCTTTGCGGAGAGTGGTGGATTTGTAT

**ACGCGT**ACGCGGCCGCTCGAG - GFP Tag - GTTTAA

**Protein Sequence:** >RG210386 representing NM\_020989  
Red=Cloning site Green=Tags(s)

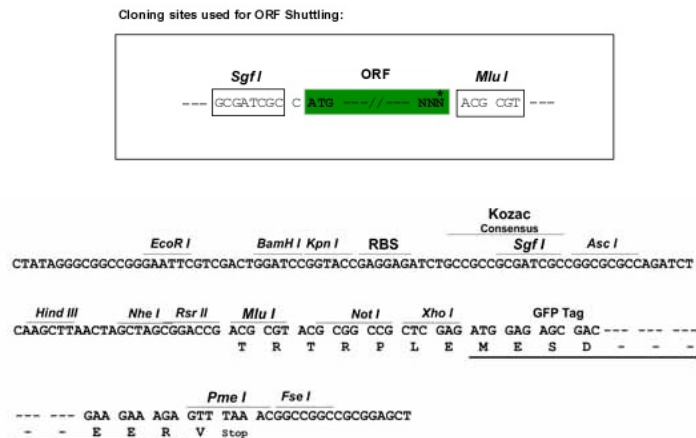
MGKITFYEDRAFQGRSYETTTDCPNLQPYFSRCNSIRVESGCWMLYERPNYQQQYLLRRGEYPDYQQWM  
GLSDSIRSCLIPQTVSHRLRLYEREDHKGLMMELSEDCPSIQDRFHLSEIRSLHVLEGCWVLYELPNYR  
GRQYLLRPQEYRRCQDWGAMDAKAGSLRRVVDLY

**TRTRPLE** - GFP Tag - V

**Restriction Sites:** SgfI-MluI



[View online »](#)

**Cloning Scheme:**


**ACCN:** NM\_020989

**ORF Size:** 522 bp

**OTI Disclaimer:** The molecular sequence of this clone aligns with the gene accession number as a point of reference only. However, individual transcript sequences of the same gene can differ through naturally occurring variations (e.g. polymorphisms), each with its own valid existence. This clone is substantially in agreement with the reference, but a complete review of all prevailing variants is recommended prior to use. [More info](#)

**OTI Annotation:** This clone was engineered to express the complete ORF with an expression tag. Expression varies depending on the nature of the gene.

**Components:** The ORF clone is ion-exchange column purified and shipped in a 2D barcoded Matrix tube containing 10ug of transfection-ready, dried plasmid DNA (reconstitute with 100 ul of water).

**Reconstitution Method:**

1. Centrifuge at 5,000xg for 5min.
2. Carefully open the tube and add 100ul of sterile water to dissolve the DNA.
3. Close the tube and incubate for 10 minutes at room temperature.
4. Briefly vortex the tube and then do a quick spin (less than 5000xg) to concentrate the liquid at the bottom.
5. Store the suspended plasmid at -20°C. The DNA is stable for at least one year from date of shipping when stored at -20°C.

**RefSeq:** [NM\\_020989.4](#)

**RefSeq Size:** 701 bp

**RefSeq ORF:** 525 bp

**Locus ID:** 1420

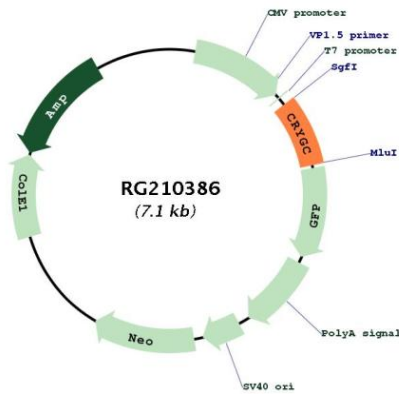
**UniProt ID:** [P07315](#)

**Cytogenetics:** 2q33.3

**Protein Families:** Druggable Genome

**Gene Summary:** This gene encodes a member of the beta/gamma-crystallin family of proteins. Crystallins constitute the major proteins of vertebrate eye lens and maintain the transparency and refractive index of the lens. This gene and several family members are present in a gene cluster on chromosome 2. Mutations in this gene have been shown to cause multiple types of cataract, including Coppock-like cataract and zonular pulverulent cataract, among others. [provided by RefSeq, Jan 2015]

**Product images:**



Circular map for RG210386