

Product datasheet for **RG210329**

ISLR (NM_005545) Human Tagged ORF Clone

Product data:

Product Type:	Expression Plasmids
Product Name:	ISLR (NM_005545) Human Tagged ORF Clone
Tag:	TurboGFP
Symbol:	ISLR
Synonyms:	HsT17563; Meflin
Mammalian Cell Selection:	Neomycin
Vector:	pCMV6-AC-GFP (PS100010)
E. coli Selection:	Ampicillin (100 ug/mL)
ORF Nucleotide Sequence:	>RG210329 representing NM_005545 Red=Cloning site Blue=ORF Green=Tags(s)

TTTTGTAATACGACTCACTATAGGGCGCCGGGAATTCGTCGACTGGATCCGGTACCGAGGAGATCTGCC
GCC**CGATCGCC**

ATGCAGGAGCTGCATCTGCTCTGGTGGGCGCTTCTCCTGGGCCTGGCTCAGGCCTGCCCTGAGCCCTGCG
ACTGTGGGAAAAGTATGGCTTCAGATCGCCGACTGTGCCTACCGCGACCTAGAATCCGTGCCGCCTGG
CTTCCCGCCAATGTGACTACACTGAGCCTGTGAGCAACCGGCTGCCAGGCTTCCGGAGGGTGCCTTC
AGGGAGGTGCCCTGCTGCAGTCGCTGTGGCTGGCACACAATGAGATCCGCACGGTGGCCCGGAGCC
TGGCCTCTCTGAGCCATCTCAAGAGCCTGGACCTCAGCCACAATCTCATCTCTGACTTTGCCTGGAGCGA
CCTGCACAACCTCAGTGCCTCCAATTGCTCAAGATGGACAGCAACGAGCTGACCTTCATCCCCCGCGAC
GCCTTCCGCAGCCTCCGTGCTCTGCGCTCGCTGCAACTCAACCACAACCGCTTGCACACATTGGCCGAGG
GCACCTTCAACCCGCTCACCGCGCTGTCCACCTGCAGATCAACGAGAACCCCTTCGACTGCACCTGCGG
CATCGTGTGGCTCAAGACATGGGCCCTGACCACGGCCGTGTCCATCCCGAGCAGGACAACATCGCCTGC
ACCTACCCCATGTGCTCAAGGGTACACCGCTGAGCCGCTGCCGCCACTGCCATGCTCGGCGCCCTCAG
TGCAGCTCAGTACCAACCCAGCCAGGATGGTGGCAGCTGCGGCCTGGTTTTGTCTGGCACTGCAGT
TGATGTGGACGGGACGGCCCTCAGCTTCACTGGCACATCCAGATACCCAGTGGCATTGTGGAGATC
ACCAGCCCAACGTGGGCACTGATGGGCGTCCCTGCCCTGGCACCCCTGTGGCCAGCTCCAGCCGCGCT
TCCAGGCCTTTGCCAATGGCAGCCTGCTTATCCCGACTTTGGCAAGCTGGAGGAAGGCACCTACAGCTG
CCTGGCCACCAATGAGCTGGGCAGTGTGAGAGCTCAGTGGACGTGGCACTGGCCACGCCCGGTGAGGGT
GGTGGAGCACACTGGGGCGCAGGTTCCATGGCAAAGCGGTTGAGGGAAAGGGCTGCTATACGGTTGACA
ACGAGGTGCAGCCATCAGGGCCGGAGGACAATGTGGTCACTACCTCAGCCGTGCTGGGAACCTGA
AGCTGCAGTCGCAGAAGGGTCCCTGGGCAGTGGCCCGAGCCTGCTCTGCTGGGCCAAAGCCTCCTC
CTCTTCTTCTCCTCACCTCCTC

ACGCGTACGGCGCCGCTCGAG - GFP Tag - GTTTAA



[View online »](#)

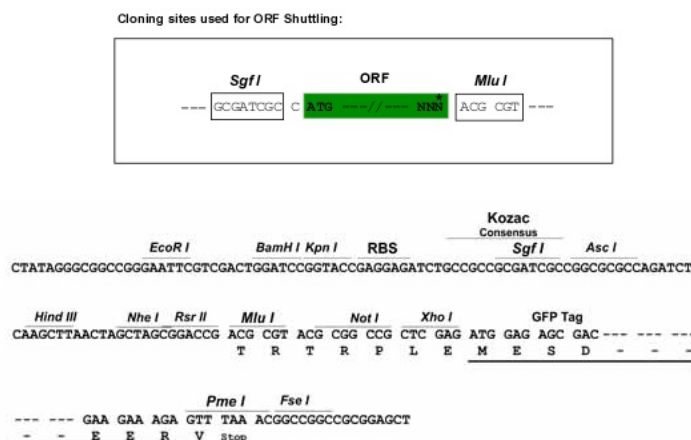
Protein Sequence: >RG210329 representing NM_005545
 Red=Cloning site Green=Tags(s)

MQELHLLWWALLLGLAQACPEPCDCGKGYGFIADCAIRDLESVPPGFANVTTLSSLNRLPGLPEGAF
 REVPLLQSLWLAHNEIRTVAAGALASLHLKSLDLSHNLSDFAWSDLHNL SALQLLKMSNELTFIPRD
 AFRSLRALRSLQLNHNRLHTLAEGTFTPLTALSHLQINENPFDCGIVWLKTWALTAVSIPEQDNIAC
 TSPHVLKGTPLSRLPPLPCSAPSVQLSYQPSQDGAELRPGFVLALHCDVDGQPAPQLHWHIQIPSGIVEI
 TSPNVGTDGRALPGTPVASSQPRFQAFANGSLLIPDFGKLEEGTYSLATNELGSAESSVDVALATPGEG
 GEDTLGRRFHGKAVEGKGCYTVDNEVQPSGPEDNVVIYLSRAGNPEAAVAEGVPGQLPPGLLLLQSSL
 LFFFLTSF

TRTRPLE – GFP Tag – V

Restriction Sites: SgfI-MluI

Cloning Scheme:



ACCN: NM_005545

ORF Size: 1284 bp

OTI Disclaimer: The molecular sequence of this clone aligns with the gene accession number as a point of reference only. However, individual transcript sequences of the same gene can differ through naturally occurring variations (e.g. polymorphisms), each with its own valid existence. This clone is substantially in agreement with the reference, but a complete review of all prevailing variants is recommended prior to use. [More info](#)

OTI Annotation: This clone was engineered to express the complete ORF with an expression tag. Expression varies depending on the nature of the gene.

Components: The ORF clone is ion-exchange column purified and shipped in a 2D barcoded Matrix tube containing 10ug of transfection-ready, dried plasmid DNA (reconstitute with 100 ul of water).

Reconstitution Method:

1. Centrifuge at 5,000xg for 5min.
2. Carefully open the tube and add 100ul of sterile water to dissolve the DNA.
3. Close the tube and incubate for 10 minutes at room temperature.
4. Briefly vortex the tube and then do a quick spin (less than 5000xg) to concentrate the liquid at the bottom.
5. Store the suspended plasmid at -20°C. The DNA is stable for at least one year from date of shipping when stored at -20°C.

RefSeq: [NM_005545.3](#), [NP_005536.1](#)

RefSeq Size: 2312 bp

RefSeq ORF: 1287 bp

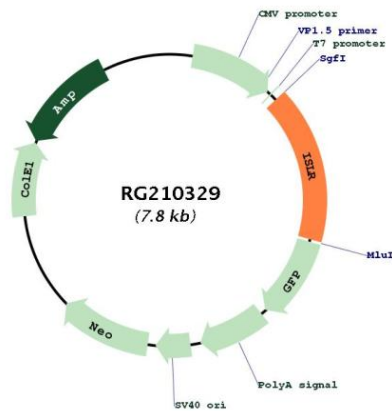
Locus ID: 3671

UniProt ID: [O14498](#)

Cytogenetics: 15q24.1

Domains: LRRCT, LRR, LRR_TYP, IGc2, LRR_PS

Product images:



Circular map for RG210329