

## Product datasheet for **RG210275**

### ATP6IP2 (ATP6AP2) (NM\_005765) Human Tagged ORF Clone

#### Product data:

Product Type:	Expression Plasmids
Product Name:	ATP6IP2 (ATP6AP2) (NM_005765) Human Tagged ORF Clone
Tag:	TurboGFP
Symbol:	ATP6IP2
Synonyms:	APT6M8-9; ATP6IP2; ATP6M8-9; CDG2R; ELDF10; HT028; M8-9; MRXE; MRXSH; MSTP009; PRR; RENR; XMRE; XPDS
Mammalian Cell Selection:	Neomycin
Vector:	pCMV6-AC-GFP (PS100010)
E. coli Selection:	Ampicillin (100 ug/mL)
ORF Nucleotide Sequence:	>RG210275 representing NM_005765 Red=Cloning site Blue=ORF Green=Tags(s)

TTTTGTAATACGACTCACTATAGGGCGGCCGGAATTCGTCGACTGGATCCGGTACCGAGGAGATCTGCC  
GCC**CGATCGCC**

ATGGCTGTGTTTGTCTGCTCCTGGCGTTGGTGGCGGGTGTGTTGGGAACGAGTTAGTATATTTAAAT  
CACCAGGGTCTGTTGTTTCCGAAATGGAAATGGCCTATACCAGGAGAGCGGATCCCAGACGTGGCTGC  
ATTGTCCATGGGCTTCTCTGTGAAAGAAGACCTTTCTGGCCAGGACTCGCAGTGGGTAACCTGTTTCAT  
CGTCTCGGGCTACCGTCATGGTATGGTGAAGGGAGTGAACAACTGGCTCTACCCCGAGGAGTGTCA  
TTTCGTACCTTTGGAGAATGCAGTTCCTTTTAGTCTTGACAGTGTGCAAATCCATTCCTCCTATT  
TTCTGAGGAACTCCTGTTGTTTGCAGTTGGCTCCAGTGAGGAAAGAGTGTATATGGTAGGGAAGGCA  
AACTCAGTGTGTTGAAGACCTTTCAGTCACCTTGCAGTCCCGTAAATCGCCTGTTTCAAGAAAACCTCG  
TTCTCAGTTCACCTCCCTCAATTCTCTGAGTAGGAACAATGAAGTTGACCTGCTTTCTTCTGAACT  
GCAAGTGCTACATGATATTTCAAGCTTGCTGTCTCGTCATAAGCATCTAGCCAAGGATCATTCTCCTGAT  
TTATATTCAGTGGAGCTGGCAGGTTTGGATGAAATTTGGGAAGCGTTATGGGAAGACTCTGAACAATTCA  
GAGATGCTTCAAGATCCTTGTGACGCTCTGCAAAAGTTTGAGATGACATGTACAGTCTTTATGGTGG  
GAATGCAGTGGTAGAGTTAGTCACTGTCAAGTCATTTGACACCTCCCTCATTAGGAAGACAAGGACTATC  
CTTGAGGCAAAAACAAGCGAAGAACCAGCAAGTCCCTATAACCTTGCATATAAGTATAATTTTGAATATT  
CCGTGGTTTTCAACATGGTACTTTGGATAATGATCGCCTTGGCCTTGGCTGTGATTATCACCTCTTACAA  
TATTTGGAACATGGATCCTGGATATGATAGCATCATTTATAGGATGACAAACCAGAAGATTCCAATGGAT

**ACGCGT**ACGCGGCCGCTCGAG - GFP Tag - GTTTAA



[View online »](#)

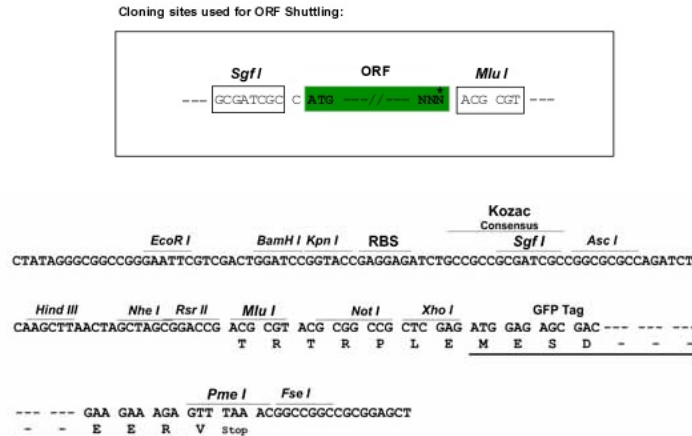
**Protein Sequence:** >RG210275 representing NM\_005765  
 Red=Cloning site Green=Tags(s)

MAVFVLLALVAGVLGNEFSILKSPGSVFRNGNWPPIGERIPDVAALSMGFSVKEDLSWPGLAVGNLFH  
 RPRATVMVMVKGVNKLALPPGSVISYPLENAVPFSLDSVANSIHSLFSEETPVVLQLAPSEERVYVMVGKA  
 NSVFEDLSVTLRQLRNRLFQENSVLSSLPLNSLSRNNEVDLLFLSELQVLHDISSLLSRHKHLAKDHSPL  
 LYSLELAGLDEIGKRYGEDSEQFRDASKILVDALQKFADDMYSLYGGNAVVELVTVKSFDTSLIRKTRTI  
 LEAKQAKNPASPYNLAYKYNFEYSVVFNMVLWIMIALALAVIITSYNIWNMDPGYDSIIYRMTNQIRMD

TRTRPLE - GFP Tag - V

**Restriction Sites:** SgfI-MluI

**Cloning Scheme:**



**ACCN:** NM\_005765

**ORF Size:** 1050 bp

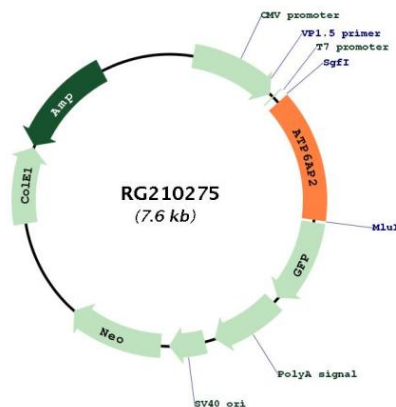
**OTI Disclaimer:** Due to the inherent nature of this plasmid, standard methods to replicate additional amounts of DNA in E. coli are highly likely to result in mutations and/or rearrangements. Therefore, OriGene does not guarantee the capability to replicate this plasmid DNA. Additional amounts of DNA can be purchased from OriGene with batch-specific, full-sequence verification at a reduced cost. Please contact our customer care team at [custsupport@origene.com](mailto:custsupport@origene.com) or by calling 301.340.3188 option 3 for pricing and delivery.

The molecular sequence of this clone aligns with the gene accession number as a point of reference only. However, individual transcript sequences of the same gene can differ through naturally occurring variations (e.g. polymorphisms), each with its own valid existence. This clone is substantially in agreement with the reference, but a complete review of all prevailing variants is recommended prior to use. [More info](#)

**OTI Annotation:** This clone was engineered to express the complete ORF with an expression tag. Expression varies depending on the nature of the gene.

<b>Components:</b>	The ORF clone is ion-exchange column purified and shipped in a 2D barcoded Matrix tube containing 10ug of transfection-ready, dried plasmid DNA (reconstitute with 100 ul of water).
<b>Reconstitution Method:</b>	<ol style="list-style-type: none"> <li>1. Centrifuge at 5,000xg for 5min.</li> <li>2. Carefully open the tube and add 100ul of sterile water to dissolve the DNA.</li> <li>3. Close the tube and incubate for 10 minutes at room temperature.</li> <li>4. Briefly vortex the tube and then do a quick spin (less than 5000xg) to concentrate the liquid at the bottom.</li> <li>5. Store the suspended plasmid at -20°C. The DNA is stable for at least one year from date of shipping when stored at -20°C.</li> </ol>
<b>RefSeq:</b>	<u>NM_005765.3</u>
<b>RefSeq Size:</b>	2044 bp
<b>RefSeq ORF:</b>	1053 bp
<b>Locus ID:</b>	10159
<b>UniProt ID:</b>	<u>O75787</u>
<b>Cytogenetics:</b>	Xp11.4
<b>Protein Families:</b>	Druggable Genome, Transmembrane
<b>Gene Summary:</b>	This gene encodes a protein that is associated with adenosine triphosphatases (ATPases). Proton-translocating ATPases have fundamental roles in energy conservation, secondary active transport, acidification of intracellular compartments, and cellular pH homeostasis. There are three classes of ATPases- F, P, and V. The vacuolar (V-type) ATPases have a transmembrane proton-conducting sector and an extramembrane catalytic sector. The encoded protein has been found associated with the transmembrane sector of the V-type ATPases. [provided by RefSeq, Jul 2008]

### Product images:



Circular map for RG210275