

## Product datasheet for **RG210237**

### **MAGEB3 (NM\_002365) Human Tagged ORF Clone**

#### Product data:

Product Type:	Expression Plasmids
Product Name:	MAGEB3 (NM_002365) Human Tagged ORF Clone
Tag:	TurboGFP
Symbol:	MAGEB3
Synonyms:	CT3.5
Mammalian Cell Selection:	Neomycin
Vector:	pCMV6-AC-GFP (PS100010)
E. coli Selection:	Ampicillin (100 ug/mL)
ORF Nucleotide Sequence:	>RG210237 representing NM_002365 Red=Cloning site Blue=ORF Green=Tags(s)

TTTTGTAATACGACTCACTATAGGGCGGCCGGAATTCGTCGACTGGATCCGGTACCGAGGAGATCTGCC  
GCC**CGATCGCC**

ATGCCTCGGGT**CAGAAGTACGCTCCATGCACGTGAGAAACGCCAGCAGACCCGGGT**CAGACCCAGG  
ATCACCAGGGT**GCTCAGATCACTGCACTAACAAAGAAAAAGTATCCTTTTCATCCCTCTTATTTTGGG**  
GGCTACTATCCAGAAAAAGTCTGCTGGTAGGT**CACGTAGTGTCTCAAGAAGCCTCAGAGAGCACTATCC**  
ACCACTACATCTGTAGATGTTTCTTACAAAAAGTCATACAAGGGAGCCAA**CAGCAAAATTGAGAAAAAGC**  
AAAGCTTCTCTCAGGGTCTATCCTCCACTGTGCAGTCTCGCACAGACCCTCTAATCATGAAGACAAATAT  
GTTGGTGCAGTTCCTGATGGAAATGTACAAGATGAAAAAGCCATTATGAAAGCAGATATGCTAAAAATT  
GTCCAAAAAGCCATAAGAATTGCTTCCCTGAGATCCTTAAAAAGCTTCTTTCAACATGGAGGTGGTAT  
TTGGTGTGATTTAAAGAAAGTTGATTCTACCAAGGACTCCTATGTCCTTGT**CAGCAAAATGGATCTCC**  
CAACAATGGGACAGT**GACTCGTGGGAGGGGATTCCCAAGACAGGTCTCCTGCTGAATCTCCTGGGCGTG**  
ATCTTCATGAAGGGCACTGTGCCACTGAGGAGAAGATCTGGGAATTCCTGAATAAGATGAGAATATATG  
ATGGGAAGAAACACTTCATATTTGGGGAGCCAGAAAGCTCATCACCCAAGATTTGGTGAAGCTTAAATA  
CCTGGAGTACCGACAAGTGCCCAACAGTAATCCTGCACGCTATGAATTCCTGTGGGTCCAAGAGCCCAT  
GCTGAAACCAGCAAGATGAAGGTCTGGAGTTTGGGCCAAGGTCAATAAAACTGTC**CCCAAGTCCGTTCC**  
AGTTCTGGTATGAAGAGGCTTTGAGAGATGAGGAAGAAAGAGTCCAAGCTGCAGCTATGCTCAATGATGG  
CAGTAGTGCCATGGGCAGAAAGTGTCCAAAGGCCAAGGCTAGCAGCTCTCCACGCC

**ACGCGT**ACGCGGCCGCTCGAG - GFP Tag - GTTTAA



[View online »](#)

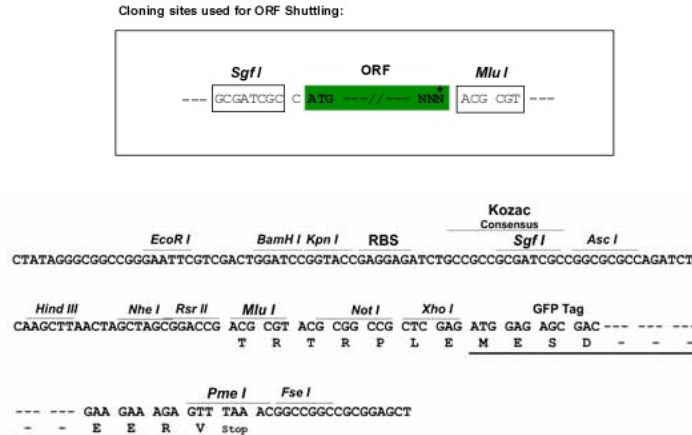
**Protein Sequence:** >RG210237 representing NM\_002365  
 Red=Cloning site Green=Tags(s)

MPRGQKSTLHAREKRQQTRGQTQDHQGAQITATNKKKVSFSSPLILGATIQKKSAGRSRSSALKKPKQRALS  
 TTTSDVSYKKSYPKANSKIEKKQSFSQLSSTVQSRTDPLIMKTNMLVQFLMEMYKMKPKIMKADMLKI  
 VQKSHKNCPEILKKASFNMEVVFVDLKKVDSTKDSYVLVSKMDLPNNGTVTRGRGFPKGLLLNLLGV  
 IFMKGNCATEEKIWEFLNKMRIYDGKHHFIFGEPRKLITQDLVKLKYLEYRQVPNSNPARYEFLWGPRAH  
 AETSKMKVLEFWAKVNKTVPFAFQFWYEEALRDEEERVQAAAMLNDGSSAMGRKCSKAKASSSSHA

TRTRPLE - GFP Tag - V

**Restriction Sites:** SgfI-MluI

**Cloning Scheme:**



**ACCN:** NM\_002365

**ORF Size:** 1038 bp

**OTI Disclaimer:** The molecular sequence of this clone aligns with the gene accession number as a point of reference only. However, individual transcript sequences of the same gene can differ through naturally occurring variations (e.g. polymorphisms), each with its own valid existence. This clone is substantially in agreement with the reference, but a complete review of all prevailing variants is recommended prior to use. [More info](#)

**OTI Annotation:** This clone was engineered to express the complete ORF with an expression tag. Expression varies depending on the nature of the gene.

**Components:** The ORF clone is ion-exchange column purified and shipped in a 2D barcoded Matrix tube containing 10ug of transfection-ready, dried plasmid DNA (reconstitute with 100 ul of water).

**Reconstitution Method:**

1. Centrifuge at 5,000xg for 5min.
2. Carefully open the tube and add 100ul of sterile water to dissolve the DNA.
3. Close the tube and incubate for 10 minutes at room temperature.
4. Briefly vortex the tube and then do a quick spin (less than 5000xg) to concentrate the liquid at the bottom.
5. Store the suspended plasmid at -20°C. The DNA is stable for at least one year from date of shipping when stored at -20°C.

**RefSeq:** [NM\\_002365.4](#)

**RefSeq Size:** 2303 bp

**RefSeq ORF:** 1041 bp

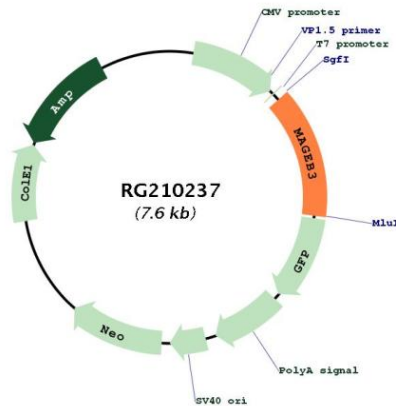
**Locus ID:** 4114

**UniProt ID:** [O15480](#)

**Cytogenetics:** Xp21.2

**Gene Summary:** This gene is a MAGE-B subfamily member of the MAGE gene family. MAGE family member proteins direct the expression of tumor antigens recognized on a human melanoma by autologous cytolytic T lymphocytes. There are two known clusters of MAGE genes on chromosome X. The members of the MAGE-A subfamily are located in the Xq28 region, while the members of the MAGE-B subfamily are clustered in the Xp21 region. [provided by RefSeq, Jul 2008]

### Product images:



Circular map for RG210237