

Product datasheet for **RG210233**

LMO1 (NM_002315) Human Tagged ORF Clone

Product data:

Product Type: Expression Plasmids
Product Name: LMO1 (NM_002315) Human Tagged ORF Clone
Tag: TurboGFP
Symbol: LMO1
Synonyms: RBTN1; RHOM1; TTG1
Mammalian Cell Selection: Neomycin
Vector: pCMV6-AC-GFP (PS100010)
E. coli Selection: Ampicillin (100 ug/mL)
ORF Nucleotide Sequence: >RG210233 representing NM_002315
 Red=Cloning site Blue=ORF Green=Tags(s)

TTTTGTAATACGACTCACTATAGGGCGGCCGGAATTCGTCGACTGGATCCGGTACCGAGGAGATCTGCC
 GCC**CGATCGCC**

ATGATGGTGTGGACAAGGAGGACGGCGTGCCGATGCTCTCCGTCCAGCCAAAGGGAAGCAGAAGGGCT
 GTGCGGGCTGTAACCGCAAGATCAAGGACCGCTATCTGCTGAAGGCATTGGACAAGTACTGGCACGAAGA
 CTGCCTCAAGTGTGCTGTGACTGCCGCTGGGCGAGGTGGGCTCCACCCTACACCAAGGCCAAC
 CTCATCCTGTGCCGACGCGACTACCTGAGGCTCTTTGGCACCACAGGGAAGTGTGCTGCTGCAGCAAGC
 TGATCCCAGCCTTCGAGATGGTATGCGGGCCCGGACAACGTGTATCACCTCGACTGCTTCGCCTGCCA
 GCTCTGCAACCAGAGATTTGTGTGGGAGACAAATCTTCTGAAGAACAACATGATCTTGTGTCAGATG
 GACTATGAGGAAGGGCAGCTCAATGGCACCTTTGAATCCCAAGTTCAG

ACGCGTACGCGGCCGCTCGAG - GFP Tag - GTTTAA

Protein Sequence: >RG210233 representing NM_002315
 Red=Cloning site Green=Tags(s)

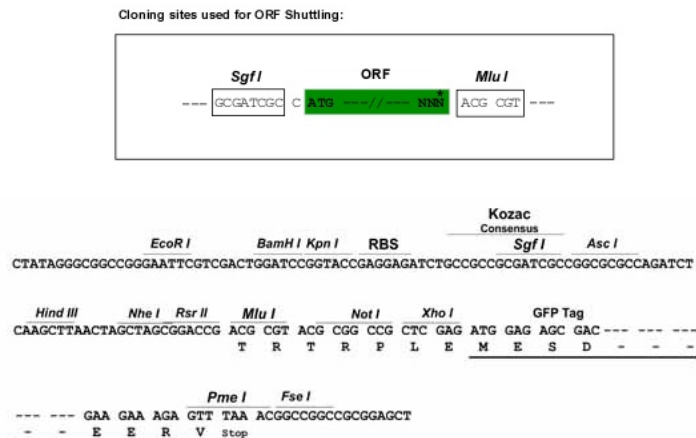
MMVLDKEDGVPMLSVQPKGKQKGCAGCNRKIKDRYLLKALDKYWHEDCLKCACCDRLGEVGSSTLYTKAN
 LILCRRDYLRFGTTGNCAACSKLIPAFEMVMRARDNVYHLDCFACQLCNQRFVCGDKFFLKNMILCQM
 DYEEGQLNGTFESVQV

TRTRPLE - GFP Tag - V

Restriction Sites: SgfI-MluI



[View online »](#)

Cloning Scheme:


ACCN: NM_002315

ORF Size: 468 bp

OTI Disclaimer: The molecular sequence of this clone aligns with the gene accession number as a point of reference only. However, individual transcript sequences of the same gene can differ through naturally occurring variations (e.g. polymorphisms), each with its own valid existence. This clone is substantially in agreement with the reference, but a complete review of all prevailing variants is recommended prior to use. [More info](#)

OTI Annotation: This clone was engineered to express the complete ORF with an expression tag. Expression varies depending on the nature of the gene.

Components: The ORF clone is ion-exchange column purified and shipped in a 2D barcoded Matrix tube containing 10ug of transfection-ready, dried plasmid DNA (reconstitute with 100 ul of water).

Reconstitution Method:

1. Centrifuge at 5,000xg for 5min.
2. Carefully open the tube and add 100ul of sterile water to dissolve the DNA.
3. Close the tube and incubate for 10 minutes at room temperature.
4. Briefly vortex the tube and then do a quick spin (less than 5000xg) to concentrate the liquid at the bottom.
5. Store the suspended plasmid at -20°C. The DNA is stable for at least one year from date of shipping when stored at -20°C.

RefSeq: [NM_002315.3](#)

RefSeq Size: 1274 bp

RefSeq ORF: 471 bp

Locus ID: 4004

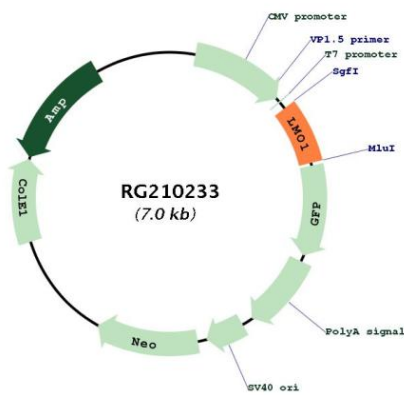
UniProt ID: [P25800](#)

Cytogenetics: 11p15.4

Protein Families: Druggable Genome, Transcription Factors

Gene Summary: This locus encodes a transcriptional regulator that contains two cysteine-rich LIM domains but lacks a DNA-binding domain. LIM domains may play a role in protein interactions; thus the encoded protein may regulate transcription by competitively binding to specific DNA-binding transcription factors. Alterations at this locus have been associated with acute lymphoblastic T-cell leukemia. Chromosomal rearrangements have been observed between this locus and at least two loci, the delta subunit of the T-cell antigen receptor gene and the LIM domain binding 1 gene. Alternatively spliced transcript variants have been described. [provided by RefSeq, Jul 2012]

Product images:



Circular map for RG210233