

Product datasheet for **RG210204**

BMP9 (GDF2) (NM_016204) Human Tagged ORF Clone

Product data:

Product Type:	Expression Plasmids
Product Name:	BMP9 (GDF2) (NM_016204) Human Tagged ORF Clone
Tag:	TurboGFP
Symbol:	BMP9
Synonyms:	BMP-9; BMP9; HHT5
Mammalian Cell Selection:	Neomycin
Vector:	pCMV6-AC-GFP (PS100010)
E. coli Selection:	Ampicillin (100 ug/mL)
ORF Nucleotide Sequence:	>RG210204 representing NM_016204 Red=Cloning site Blue=ORF Green=Tags(s)

TTTTGTAATACGACTCACTATAGGGCGGCCGGAATTCGTCGACTGGATCCGGTACCGAGGAGATCTGCC
GCC**CGATCGCC**

ATGTGTCCTGGGGCACTGTGGGTGGCCCTGCCCTGCTGTCCCTGCTGGCTGGCTCCCTACAGGGGAAGC
CACTGCAGAGCTGGGGACGAGGGTCTGCTGGGGGAAACGCCACAGCCCACTGGGGTGCCTGGAGTGG
GCTGCCTGAGCACACCTTCAACCTGAAGATGTTTCTGGAGAACGTGAAGGTGGATTTCTGCGCAGCCTT
AACCTGAGTGGGGTCCCTTCGCAGGACAAAACCAGGGTGGAGCCCGCAGTACATGATTGACCTGTACA
ACAGGTACACGTCGGATAAGTCGACTACGCCAGCGTCCAACATTGTGCGGAGCTTCAGCATGGAAGATGC
CATCTCCATAAAGTCCACAGAGGACTTCCCTTCCAGAAGCACATCTTGCTCTTCAACATCTCCATTCT
AGGCATGAGCAGATCACCAGAGCTGAGCTCCGACTCTATGCTCCTGTCAAAATCACGTGGACCCCTCTC
ATGACCTGAAAGGAAGCGTGGTCATTTATGATGTTCTGGATGGAACAGATGCCTGGGATAGTGCTACAGA
GACCAAGACCTTCTGGTGTCCAGGACATTCAGGATGAGGGCTGGGAGACCTTGGAAAGTGTCCAGCGCC
GTGAAGCGCTGGGTCCGGTCCGACTCCACCAAGAGCAAAAATAAGCTGGAAGTGAAGTGTGGAGAGCCACA
GGAAGGGCTGCGACACGCTGGACATCAGTGTCCCCCAGGTTCCAGAACTGCCCTTCTTTGTTGTCTT
CTCCAATGACCACAGCAGTGGGACCAAGGAGACCAGCTGGAGCTGAGGGAGATGATCAGCCATGAACAA
GAGAGCGTGTCAAGAAGCTGTCCAAGGACGGCTCCACAGAGGCAGGTGAGAGCAGTCACGAGGAGGACA
CGGATGGCCACGTGGCTGCGGGTTCGACTTTAGCCAGGCGAAAAGGAGCGCCGGGCTGGCAGCCACTG
TCAAAAGACCTCCCTGCGGGTAAACTTCGAGGACATCGGCTGGGACAGCTGGATCATTGCACCCAAGGAG
TATGAAGCCTACGAGTGAAGGGCGGCTGCTTCTTCCCCTGGCTGACGATGTGACGCCGACGAAACAGC
CTATCGTGCAGACCCTGGTGCATCTCAAGTTCACCAAAAGGTGGGCAAGGCTGCTGTGTGCCACCAA
ACTGAGCCCCATCTCCGTCCTTACAAGGATGACATGGGGTGCCACCCTCAAGTACCATTACGAGGGC
ATGAGCGTGGCAGAGTGTGGTGCAGG

ACGCGTACGCGGCCGCTCGAG - GFP Tag - GTTTAA



[View online »](#)

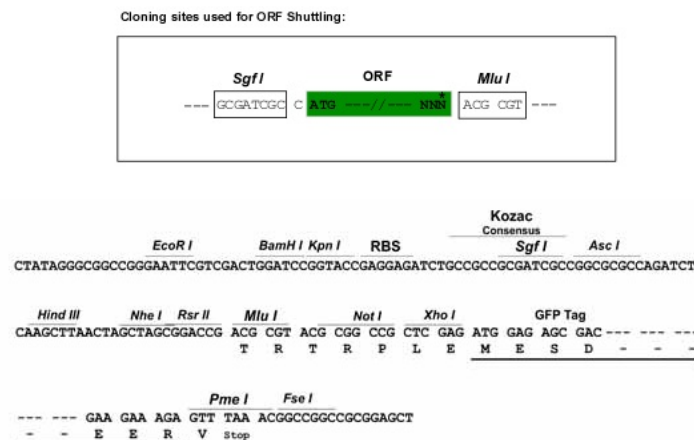
Protein Sequence: >RG210204 representing NM_016204
Red=Cloning site Green=Tags(s)

MCPGALWVALPLLSLLAGSLQGKPLQSWGRGSAGGNAHSPLGVPGGGLPEHTFNLKMFLENVKVDFLRSL
 NLSGVP SQDKTRVEPPQYMIDL YNRYTSDKSTTPASNIVRSFSDA ISITATEDFPFQKHILLFNISIP
 RHEQITRAELRL YVSCQNHVDP SHDLKGSVVIYDVL DGTDAWDSATETKFLV SQDIQDEGWETLEVSSA
 VKRWVRS DSTKSKNKLEVTVESHRKGC DTLDISVPPGSRNLPFFVVF S NDHSSGTKETRLELREMISHEQ
 ESVLK KLSKDGSTEAGES SHEEDTDGHVAAGSTLARRKRSAGAGSHCQK TSLRVNFEDIGWDSWIIAPKE
 YEAYECKGGCFFPLADDVTPTKHAI VQTLVHLKFPTKVGKACCVPTKLSPI SVLYKDDMGVPTLK YHYEG
 MSVAECGCR

TRTRPLE - GFP Tag - V

Restriction Sites: SgfI-MluI

Cloning Scheme:



ACCN: NM_016204

ORF Size: 1287 bp

OTI Disclaimer: The molecular sequence of this clone aligns with the gene accession number as a point of reference only. However, individual transcript sequences of the same gene can differ through naturally occurring variations (e.g. polymorphisms), each with its own valid existence. This clone is substantially in agreement with the reference, but a complete review of all prevailing variants is recommended prior to use. [More info](#)

OTI Annotation: This clone was engineered to express the complete ORF with an expression tag. Expression varies depending on the nature of the gene.

Components: The ORF clone is ion-exchange column purified and shipped in a 2D barcoded Matrix tube containing 10ug of transfection-ready, dried plasmid DNA (reconstitute with 100 ul of water).

Reconstitution Method:

1. Centrifuge at 5,000xg for 5min.
2. Carefully open the tube and add 100ul of sterile water to dissolve the DNA.
3. Close the tube and incubate for 10 minutes at room temperature.
4. Briefly vortex the tube and then do a quick spin (less than 5000xg) to concentrate the liquid at the bottom.
5. Store the suspended plasmid at -20°C. The DNA is stable for at least one year from date of shipping when stored at -20°C.

RefSeq: [NM_016204.4](#)

RefSeq Size: 1942 bp

RefSeq ORF: 1290 bp

Locus ID: 2658

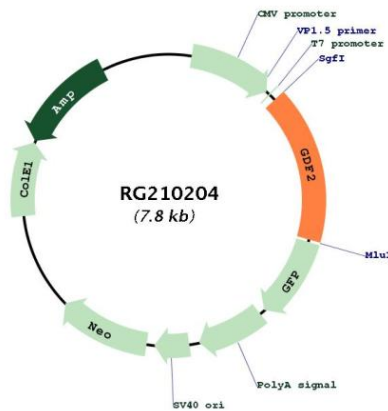
UniProt ID: [Q9UK05](#)

Cytogenetics: 10q11.22

Protein Families: Druggable Genome, Secreted Protein

Gene Summary: This gene encodes a secreted ligand of the TGF-beta (transforming growth factor-beta) superfamily of proteins. Ligands of this family bind various TGF-beta receptors leading to recruitment and activation of SMAD family transcription factors that regulate gene expression. The encoded preproprotein is proteolytically processed to generate each subunit of the disulfide-linked homodimer. This protein regulates cartilage and bone development, angiogenesis and differentiation of cholinergic central nervous system neurons. Mutations in this gene are associated with hereditary hemorrhagic telangiectasia. [provided by RefSeq, Jul 2016]

Product images:



Circular map for RG210204