

Product datasheet for **RG210196**

UBASH3A (NM_001001895) Human Tagged ORF Clone

Product data:

Product Type:	Expression Plasmids
Product Name:	UBASH3A (NM_001001895) Human Tagged ORF Clone
Tag:	TurboGFP
Symbol:	UBASH3A
Synonyms:	CLIP4; STS-2; TULA; TULA-1
Mammalian Cell Selection:	Neomycin
Vector:	pCMV6-AC-GFP (PS100010)
E. coli Selection:	Ampicillin (100 ug/mL)



[View online »](#)

ORF Nucleotide Sequence:

>RG210196 representing NM_001001895
 Red=Cloning site Blue=ORF Green=Tags(s)

TTTTGTAATACGACTCACTATAGGGCGGCCGGAATTCGTCGACTGGATCCGGTACCGAGGAGATCTGCC
 GCC**GCGATCGCC**

ATGGCAGCGGGGAGACGCACTACGCCAAGTCTCCAACAAGCTCAAGGGCCGAGCAGCCCTCCC
 TCCTGGAGCCCTTCTGGCCATGGCTTCCCGGTGCACACCGCGCTGAAAGCGTTGGCAGCCACGGGGAG
 GAAGACGGCGGAGGAGGCCTTGGCTGGCTGCATGATCATTGCAATGACCATTCCCTAGACGACCCCATC
 CCCCAGGAGTATGCCCTTTCTCTGTCCAACGGGGCCCTGCTGGAAAACTTCAAGAGTTCTGGAGAG
 AGAGCAAGCGCCAGTGTGCAAAGAAGAGAGCTCATGAGGTCTTCCACACGTGACACTCTGTGACTTCTT
 CACGTGTGAAGACCAGAAGGTGGAATGCCTGTACGAGGCGCTGAAGAGAGCTGGAGACAGGCTCTGGGC
 TCCTTCCCACGGCCGTGCCTCTGGCTCCTCCTCCATCAGTACCTCGGCTTCTTCGTCAGTGGCA
 GCCCGCAGACGTCATCCGGGAATTCGCCATGACCTTCCGCACGGAAGCATCTCTTAGCAGACTGCTC
 CGTGAAGCCTTACACAAACAGCTGCATCTGACCTTGGCCACAAGTTTACCCACCACAGAGGACG
 CTGGAGCAGCTGGCCAGAGCCATCCCCCTGGGCCACAGCTGCCAGTGGACCGCAGCACTCTACTCCGAG
 ACATGCGCTTGTGCACTACCAGACCCTGAGAGCCCTATTCCAGTACAAACCCGAGAAGCTGGATGAGCT
 GACGCTAAGTCTGGTACTACATCTTTGTGGACCCACGACAGGACGAAGCCAGCGAGGGCTGGGTG
 ATGGGATCTCACAGCGGACGGGCTGCCGGGGCTTCTGCCGAAAACTACACGGATCGAGCCAGTGA
 CTGACACGTGGGTGAAGCACAGGATGTACACCTCAGTCTAGCCACAGACCTGAACTCCAGAAAGGATGG
 TGAAGCCAGCAGCAGATGCAGCGGGGAATTTCTCCACAAACGCAAGGAGTCTTAGCAGTTACAGGCC
 TTGCAGGCTACCATGCAAGGAAGAGCGTGTGGTGGTTCGCCACGGGGAGAGAGTGGATCAGATCTTCG
 GGAAGGCATGGCTGCAGCAATGCTCCACTCCTGATGGGAAATACTACAGGCCAGACCTGAAATTTCCCTG
 CAGTCTGCCAAGACGGAGTCGTGGGATCAAAGACTTTGAAAAACGATCCCCCATTATCATCGTGTGGCATT
 TTCCAGTCCAGAATTGCAGGGGACGCGCTACTGGACAGTGGTATCAGAATCAGCTCTGTGTTGCCCTCCC
 CAGCCCTCCGCTGTGTGCAGACGGCCAACTCATCCTGGAAGAACTCAAACCTGGAGAAAAAATCAAGAT
 ACGAGTGGAACTGGAATCTTTGAATGGACAAAATGGGAAGCTGGCAAAACCCCAACCCCTCATGAGC
 CTGGAAGAGCTGAAAGAGGCAAATTTCAACATTGACACTGATTACAGGCCCGGTTTCCCCTGTCCGCC
 TCATGCCGGCCGAGAGCTACCAGGAGTACATGGACAGGTGCACGGCGAGCATGGTCAAATCGTCAACAC
 CTGTCCGACGACACGGGTGTCATCCTAATTGTGAGTACGGCTCCACTCTGGACTCTGCACGGGCCA
 CTGCTCGGGCTGCCGCCCGGGAATGTGGGGATTTGCCCAACTCGTGAGAAAGATCCCTTCCCTGGGCA
 TGTGCTTCTGTGAAGAAAATAAAGAGGAAGGAAAATGGGAGTTGGTGAACCCACCGGTGAAGACCCTGAC
 CCACGGGGCGAACGCAGTATTTAACTGGAGAACTGGATCTCAGGCAAC

ACGCGTACGCGGCCGCTCGAG – GFP Tag – GTTTAA

Protein Sequence:

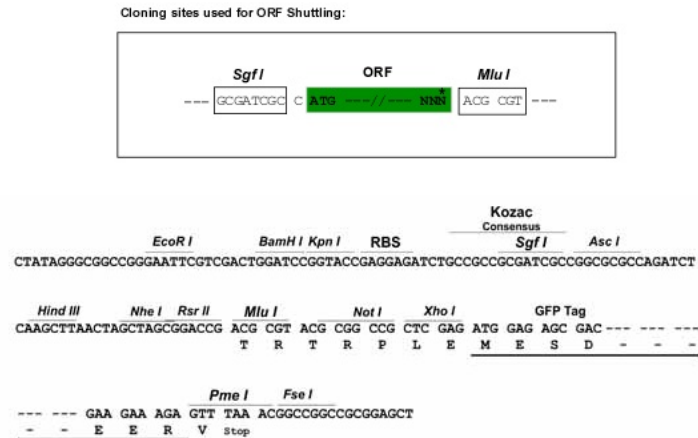
>RG210196 representing NM_001001895
 Red=Cloning site Green=Tags(s)

MAAGETQLYAKVSNLKGRRSSPALLEPFLAMGFPVHTALKALAATGRKTAEEALAWLHDHNDHSLDDPI
 PQEYALFLCPTGPLLEKLQEFWRESKRQCAKNRAHEVFPHTLDCFFTCEDQKVECLYEALKRAGDRLLG
 SFPTAVPLALHSSISYLGFVSGSPADVIREFAMTFATEASLLADCSVKPYTKQLHLTLAHKFYPHHQRT
 LEQLARAIPLGHSCQWTAALYSRDMRFVHYQTLRALFQYKPNVDELTLSPGDYIFVDPTQQDEASEGWV
 IGISQRTGCRGFLPENYTDRAESDWTWKHRMYTFLATDLNSRKDGEASSRCSGEFLPQTARSLSSLQA
 LQATIARKSVLVVRHGERVDQIFGKAWLQQCSTPDGKYRPNLNFPCSLPRRSRGIKDFENDPPLSSCGI
 FQSRIAGDALLDSGIRISSVFASPALRCVQTAKLILEELKLEKKIKIRVEPGIFEWTKWEAGKTTPTLMS
 LEELKEANFNIDTYRPAFPLSALMPAESYQEYMDRCTASMVQIVNTCPQDQDGVILIVSHGSTLDSCTRP
 LLGLPPRECGDFAQLVRKIPSLGMCFCEENKEEGKWELVNPPVKTLTHGANAVFNWRNWSGN

TRTRPLE – GFP Tag – V

Restriction Sites:

SgfI-MluI

Cloning Scheme:


ACCN: NM_001001895

ORF Size: 1869 bp

OTI Disclaimer: The molecular sequence of this clone aligns with the gene accession number as a point of reference only. However, individual transcript sequences of the same gene can differ through naturally occurring variations (e.g. polymorphisms), each with its own valid existence. This clone is substantially in agreement with the reference, but a complete review of all prevailing variants is recommended prior to use. [More info](#)

OTI Annotation: This clone was engineered to express the complete ORF with an expression tag. Expression varies depending on the nature of the gene.

Components: The ORF clone is ion-exchange column purified and shipped in a 2D barcoded Matrix tube containing 10ug of transfection-ready, dried plasmid DNA (reconstitute with 100 ul of water).

Reconstitution Method:

1. Centrifuge at 5,000xg for 5min.
2. Carefully open the tube and add 100ul of sterile water to dissolve the DNA.
3. Close the tube and incubate for 10 minutes at room temperature.
4. Briefly vortex the tube and then do a quick spin (less than 5000xg) to concentrate the liquid at the bottom.
5. Store the suspended plasmid at -20°C. The DNA is stable for at least one year from date of shipping when stored at -20°C.

RefSeq: [NM_001001895.1](#), [NP_001001895.1](#)

RefSeq Size: 2378 bp

RefSeq ORF: 1872 bp

Locus ID: 53347

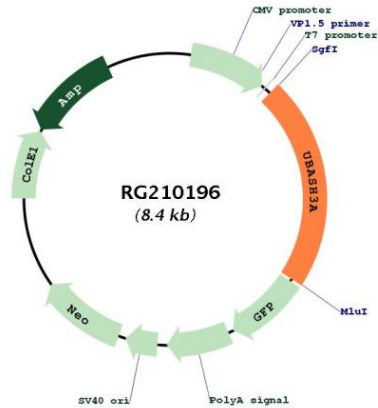
UniProt ID: [P57075](#)

Cytogenetics: 21q22.3

Protein Families: Druggable Genome

Gene Summary: This gene encodes one of two family members belonging to the T-cell ubiquitin ligand (TULA) family. Both family members can negatively regulate T-cell signaling. This family member can facilitate growth factor withdrawal-induced apoptosis in T cells, which may occur via its interaction with AIF, an apoptosis-inducing factor. Alternative splicing of this gene results in multiple transcript variants. [provided by RefSeq, Aug 2011]

Product images:



Circular map for RG210196