

Product datasheet for **RG210162**

ASB11 (NM_080873) Human Tagged ORF Clone

Product data:

Product Type:	Expression Plasmids
Product Name:	ASB11 (NM_080873) Human Tagged ORF Clone
Tag:	TurboGFP
Symbol:	ASB11
Mammalian Cell Selection:	Neomycin
Vector:	pCMV6-AC-GFP (PS100010)
E. coli Selection:	Ampicillin (100 ug/mL)
ORF Nucleotide Sequence:	>RG210162 representing NM_080873 Red=Cloning site Blue=ORF Green=Tags(s)

TTTTGTAATACGACTCACTATAGGGCGGCCGGAATTCGTCGACTGGATCCGGTACCGAGGAGATCTGCC
GCC**CGATCGCC**

ATGGAAGATGGTCCTGTTTTCTATGGCTTTAAAAACATTTTTATTACAATGTTTGCTACGTTTTTTTTCT
TTAAGCTTTTAATTAAGTTTTTTTTGGCTCTCCTAACCCATTTCTATATCGTCAAAGGAAATAGAAAAGA
AGCGGCTAGGATAGCAGAAGAGATCTATGGTGAATTTTCAGATTGCTGGGCTGATCGATCCCCACTTCAT
GAAGCTGCAGCTCAGGGCGCTTACTGGCCCTTAAAACTTAATTGCACAAGGTGCAATGTGAACCTTG
TGACAATTAACCGGGTGTCTTCTCCACGAGGCATGCCTTGGAGGTCAGTGGCCTGTGCCAAAGCCTT
ATTGAAAATGGTGCACACGTCAATGGAGTGACAGTTCACGGAGCCACACCCCTTCAATGCTTGTCTGC
AGCGGCAGTGCTGCATGTGTCAATGTGCTGCTGGAGTTCGGAGCCAAGGCCAGTTGGAGGTGCACCTGG
CCTCGCCCATCCATGAGGCAGTGAAGAGAGGTCACAGAGAGTGCATGGAGATCCTGCTGGCAAATAATGT
TAACATTGACCATGAGGTGCCTCAGCTCGGAACCTCCCCTATATGTGGCCTGCACCTACCAGAGGGTAGAC
TGTGTGAAGAACTTCTAGAATTAGGAGCCAGTGTGACCATGGCCAGTGGCTGGACACCCCACTCCATG
CTGCAGCGAGGCAGTCCAATGTGGAGGTATCCACCTGCTAACCGACTATGGAGCTAACCTGAAGCGTAG
AAATGCTCAGGGCAAAGTGCCTTGATCTGGCGGCTCCAAAAGCAGCGTGGAGCAGGCACTCTTGCTC
CGTGAAGGCCACCTGCTTTTCCAGCTCTGCCGCTGTGTGTCGGGAAGTGTCTCGGTCGAGCATGTC
ATCAAGCCATCCACAAGCTACATCTGCCAGAGCCACTCGAACGATTCTCTATACCAA

ACGCGTACGCGGCCGCTCGAG - GFP Tag - GTTTAA



[View online »](#)

Protein Sequence: >RG210162 representing NM_080873
Red=Cloning site Green=Tags(s)

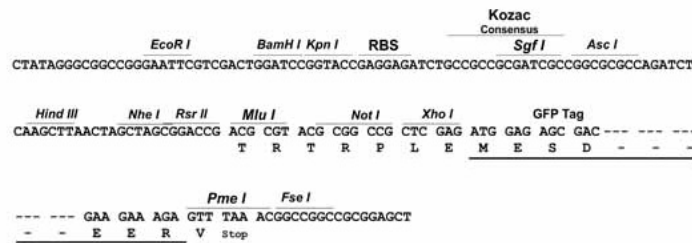
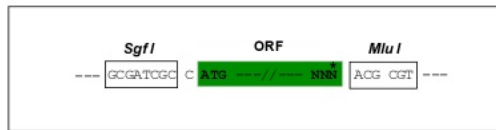
MEDGPVFGFKNIFITMFATFFFFKLLIKVFLALLTHFYIVKGNRKEAARIAEEIYGGISDCWADRSPLH
 EAAAQGRLLALKTLIAQGVNVLVTINRVSSLHEACLGGHVACAKALLENGAHVNGVTVHGATPLFNACC
 SGAACVNVLLLEFGAKAQLLEVHLASPIHEAVKRGHRECMEILLANNVNI DHEVPQLGTPLVYACTYQRVD
 CVKLLLELGASVDHGQWLDTPLHAAARQSNVEVIHLLTDYGANLKR RNAQGKSALDLAAPKSSVEQALLL
 REGPPALSQLCRLCVRKCLGRACHQAIHKLHLPEPLERFLLYQ

TRTRPLE - GFP Tag - V

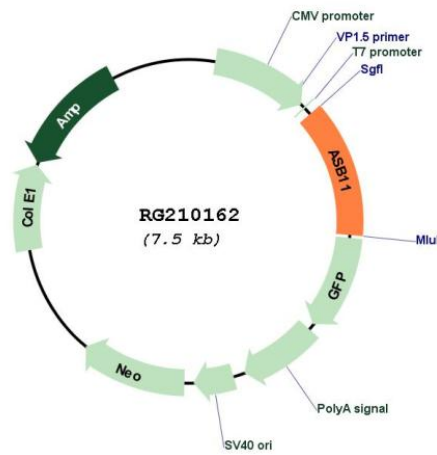
Restriction Sites: SgfI-MluI

Cloning Scheme:

Cloning sites used for ORF Shutting:



Plasmid Map:



ACCN: NM_080873

ORF Size: 969 bp

OTI Disclaimer:	The molecular sequence of this clone aligns with the gene accession number as a point of reference only. However, individual transcript sequences of the same gene can differ through naturally occurring variations (e.g. polymorphisms), each with its own valid existence. This clone is substantially in agreement with the reference, but a complete review of all prevailing variants is recommended prior to use. More info
OTI Annotation:	This clone was engineered to express the complete ORF with an expression tag. Expression varies depending on the nature of the gene.
Components:	The ORF clone is ion-exchange column purified and shipped in a 2D barcoded Matrix tube containing 10ug of transfection-ready, dried plasmid DNA (reconstitute with 100 ul of water).
Reconstitution Method:	<ol style="list-style-type: none"> 1. Centrifuge at 5,000xg for 5min. 2. Carefully open the tube and add 100ul of sterile water to dissolve the DNA. 3. Close the tube and incubate for 10 minutes at room temperature. 4. Briefly vortex the tube and then do a quick spin (less than 5000xg) to concentrate the liquid at the bottom. 5. Store the suspended plasmid at -20°C. The DNA is stable for at least one year from date of shipping when stored at -20°C.
RefSeq:	NM_080873.3
RefSeq Size:	2799 bp
RefSeq ORF:	972 bp
Locus ID:	140456
UniProt ID:	Q8WXH4
Cytogenetics:	Xp22.2
Protein Families:	Druggable Genome, Transmembrane
Gene Summary:	The protein encoded by this gene is a member of the ankyrin repeat and SOCS box-containing (ASB) family of proteins. They contain ankyrin repeat sequence and SOCS box domain. The SOCS box serves to couple suppressor of cytokine signalling (SOCS) proteins and their binding partners with the elongin B and C complex, possibly targeting them for degradation. Alternatively spliced transcript variants encoding different isoforms have been found for this gene. [provided by RefSeq, Jan 2011]