

## Product datasheet for **RG210155**

### Diffuse panbronchiolitis critical region protein 1 (DPCR1) (NM\_080870) Human Tagged ORF Clone

#### Product data:

Product Type:	Expression Plasmids
Product Name:	Diffuse panbronchiolitis critical region protein 1 (DPCR1) (NM_080870) Human Tagged ORF Clone
Tag:	TurboGFP
Symbol:	Diffuse panbronchiolitis critical region protein 1
Synonyms:	C6orf37; DPCR1; PBLT
Mammalian Cell Selection:	Neomycin
Vector:	pCMV6-AC-GFP (PS100010)
E. coli Selection:	Ampicillin (100 ug/mL)
ORF Nucleotide Sequence:	>RG210155 representing NM_080870 Red=Cloning site Blue=ORF Green=Tags(s)

TTTTGTAATACGACTCACTATAGGGCGGCCGGAATTCGTCGACTGGATCCGGTACCGAGGAGATCTGCC  
GCC**CGATCGCC**

ATGACACAAGTCACAGAAAAGTCCACAGAACACCCAGAAAAGACCACGTCAACCACAGAGAAAACCACAA  
GAACCCAGAAAAGCCTACGCTATACTCAGAGAAGACCATATGCACCAAAGGGAAAAACACACCAAGTCCC  
AGAAAAGCCTACAGAAAACCTGGGGAACACCACTGACCACTGAGACCATAAAAGCCCCAGTAAAGTCC  
ACAGAAAACCCAGAAAAACAGCAGCAGTCACAAAGACTATAAAACCTTCAGTCAAGGTCACAGGAGACA  
AATCTCTCACTACTACCTTTCTCATCTAAATAAACTGAAGTTACTCATCAGGTGCCACTGGTTCTTT  
CACCTCATTACATCTAGAACGAAGCTGAGTTCTATCACATCAGAAGCCACAGGAAACGAGAGCCATCCA  
TACCTCAATAAAGATGGCTCACAGAAAGGTATCCACGCTGGACAGATGGGAGAGAATGATTCATTCCTG  
CATGGGCCATAGTTATTGTGGTCTGGTGGCTGTGATTCTCCTCCTGGTGTTCCTTGGCCTGATCTTCTT  
GGTCTCTATATGATGCGGACACGCCGACACTAACCCAGAACACCCAGTACAATGATGCAGAGGATGAG  
GGTGGCCCAATTCTACCCGGTCTACCTGATGGAGCAGAGAATCTTGGCATGGCCAGATCCCTTCCC  
CACGG

**ACGCGT**ACGCGGCCGCTCGAG - GFP Tag - GTTTAA



[View online »](#)

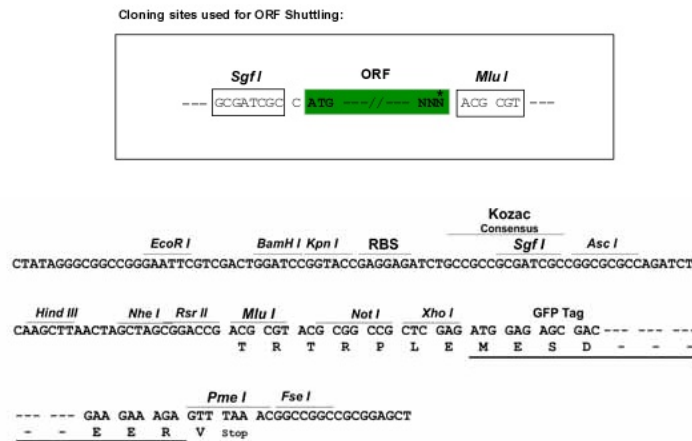
**Protein Sequence:** >RG210155 representing NM\_080870  
 Red=Cloning site Green=Tags(s)

MTQVTEKSTEHPEKTTSTTEKTRTRPEKPTLYSEKTICTKGKNTVPVEKPTENLGNTLLTTETIKAPVKS  
 TENPEKTAAVTKTIKPSVKVTGDKSLTTSSHLNKTEVTHQVPTGSFTLITSRKLSSITSEATGNESH  
 YLNKDGSSQKGIHAGQMGENDSFPAWAIVVVLVAVILLVFLGLIFLVSMMRTRRTLQNTQYNDAAEDE  
 GGPNSYPVYLMEQQNLGMGQIPSPR

TRTRPLE - GFP Tag - V

**Restriction Sites:** SgfI-MluI

**Cloning Scheme:**



**ACCN:** NM\_080870

**ORF Size:** 705 bp

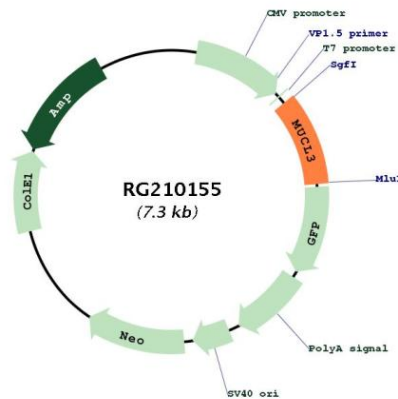
**OTI Disclaimer:** Due to the inherent nature of this plasmid, standard methods to replicate additional amounts of DNA in E. coli are highly likely to result in mutations and/or rearrangements. Therefore, OriGene does not guarantee the capability to replicate this plasmid DNA. Additional amounts of DNA can be purchased from OriGene with batch-specific, full-sequence verification at a reduced cost. Please contact our customer care team at [custsupport@origene.com](mailto:custsupport@origene.com) or by calling 301.340.3188 option 3 for pricing and delivery.

The molecular sequence of this clone aligns with the gene accession number as a point of reference only. However, individual transcript sequences of the same gene can differ through naturally occurring variations (e.g. polymorphisms), each with its own valid existence. This clone is substantially in agreement with the reference, but a complete review of all prevailing variants is recommended prior to use. [More info](#)

**OTI Annotation:** This clone was engineered to express the complete ORF with an expression tag. Expression varies depending on the nature of the gene.

<b>Components:</b>	The ORF clone is ion-exchange column purified and shipped in a 2D barcoded Matrix tube containing 10ug of transfection-ready, dried plasmid DNA (reconstitute with 100 ul of water).
<b>Reconstitution Method:</b>	<ol style="list-style-type: none"> <li>1. Centrifuge at 5,000xg for 5min.</li> <li>2. Carefully open the tube and add 100ul of sterile water to dissolve the DNA.</li> <li>3. Close the tube and incubate for 10 minutes at room temperature.</li> <li>4. Briefly vortex the tube and then do a quick spin (less than 5000xg) to concentrate the liquid at the bottom.</li> <li>5. Store the suspended plasmid at -20°C. The DNA is stable for at least one year from date of shipping when stored at -20°C.</li> </ol>
<b>RefSeq:</b>	<u>NM_080870.2, NP_543146.1</u>
<b>RefSeq Size:</b>	1989 bp
<b>RefSeq ORF:</b>	4182 bp
<b>Locus ID:</b>	135656
<b>UniProt ID:</b>	<u>Q3MIW9</u>
<b>Cytogenetics:</b>	6p21.33
<b>Protein Families:</b>	Transmembrane
<b>Gene Summary:</b>	May modulate NF-kappaB signaling and play a role in cell growth.[UniProtKB/Swiss-Prot Function]

**Product images:**



Circular map for RG210155