

Product datasheet for **RG210116**

SPP2 (NM_006944) Human Tagged ORF Clone

Product data:

Product Type:	Expression Plasmids
Product Name:	SPP2 (NM_006944) Human Tagged ORF Clone
Tag:	TurboGFP
Symbol:	SPP2
Synonyms:	SPP-24; SPP24
Mammalian Cell Selection:	Neomycin
Vector:	pCMV6-AC-GFP (PS100010)
E. coli Selection:	Ampicillin (100 ug/mL)
ORF Nucleotide Sequence:	>RG210116 representing NM_006944 Red=Cloning site Blue=ORF Green=Tags(s)

TTTTGTAATACGACTCACTATAGGGCGGCCGGAATTCGTCGACTGGATCCGGTACCGAGGAGATCTGCC
GCC**CGATCGCC**

ATGATTTCCAGAATGGAGAAGATGACGATGATGATGAAGATATTGATTATGTTTGCTCTTGAATGAACT
ACTGGTCTTGCTCAGGTTTCCCAGTGTACGACTACGATCCATCCTCCTTAAGGGATGCCCTCAGTGCCTC
TGTGGTAAAAGTGAATTTCCAGTCACTGAGTCCGTATCTGTTTCGGGCATTGAGAAGCTCATAAAAAGA
GTTGAGGTCCTAGATGAGAACAACCTGGTCATGAATTTAGAGTTCAGCATCCGGGAGACAACATGCAGGA
AGGATTCTGGAGAAGATCCCGCTACATGTGCCTTCCAGAGGGACTACTATGTGTCCACAGCTGTTTGCAG
AAGCACCGTGAAGGTATCTGCCAGCAGGTGCAGGGCGTGCATGCTCGCTGCAGCTGGTCCCTCCACG
TCTGAGTCTTACAGCAGCGAAGAGATGATTTTTGGGGACATGTTGGGATCTCATAAATGGAGAAACAATT
ATCTATTTGGTCTCATTTAGACGAGTCCATAAGTGAACAATTTATGATCGGTCACTTGGGATCATGAG
AAGGGTATTGCCTCCTGGAAACAGAAGGTACCCAAACCACCGGCACAGAGCAAGAATAAATACTGACTTT
GAG

ACGCGTACGCGGCCGCTCGAG - GFP Tag - GTTTAA



[View online »](#)

Protein Sequence: >RG210116 representing NM_006944
 Red=Cloning site Green=Tags(s)

MISRMEKMTMMKILIMFALGMNYWSCSGFPVYDYPSSLRDALSASVVKVNSQSLSPYLFRFRSSLKR
 VEVLDENNLVMNLEFSIRETTCKRKDSGEDPATCAFQRDYYVSTAVCRSTVKVSAQQVQGVHARCWSWSST
 SESYSSEEMIFGDMLGSHKWRNNYLFGLISDESISEQFYDRSLGIMRRVLPNGNRRYPNHRHRARINTDF
 E

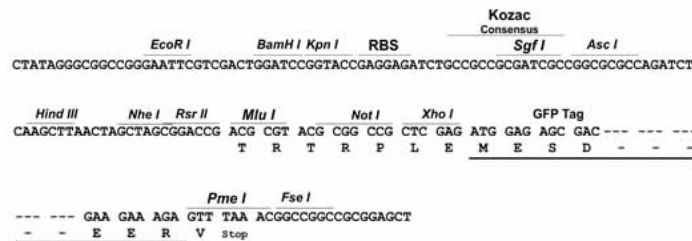
TRTRPLE - GFP Tag - V

Chromatograms: https://cdn.origene.com/chromatograms/ja2183_f05.zip

Restriction Sites: SgfI-MluI

Cloning Scheme:

Cloning sites used for ORF Shuttling:



ACCN: NM_006944

ORF Size: 633 bp

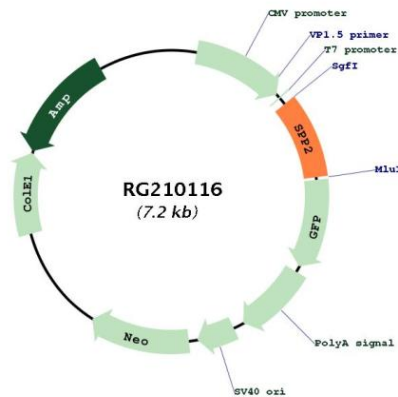
OTI Disclaimer: Due to the inherent nature of this plasmid, standard methods to replicate additional amounts of DNA in E. coli are highly likely to result in mutations and/or rearrangements. Therefore, OriGene does not guarantee the capability to replicate this plasmid DNA. Additional amounts of DNA can be purchased from OriGene with batch-specific, full-sequence verification at a reduced cost. Please contact our customer care team at custsupport@origene.com or by calling 301.340.3188 option 3 for pricing and delivery.

The molecular sequence of this clone aligns with the gene accession number as a point of reference only. However, individual transcript sequences of the same gene can differ through naturally occurring variations (e.g. polymorphisms), each with its own valid existence. This clone is substantially in agreement with the reference, but a complete review of all prevailing variants is recommended prior to use. [More info](#)

OTI Annotation: This clone was engineered to express the complete ORF with an expression tag. Expression varies depending on the nature of the gene.

- Components:** The ORF clone is ion-exchange column purified and shipped in a 2D barcoded Matrix tube containing 10ug of transfection-ready, dried plasmid DNA (reconstitute with 100 ul of water).
- Reconstitution Method:**
1. Centrifuge at 5,000xg for 5min.
 2. Carefully open the tube and add 100ul of sterile water to dissolve the DNA.
 3. Close the tube and incubate for 10 minutes at room temperature.
 4. Briefly vortex the tube and then do a quick spin (less than 5000xg) to concentrate the liquid at the bottom.
 5. Store the suspended plasmid at -20°C. The DNA is stable for at least one year from date of shipping when stored at -20°C.
- RefSeq:** [NM_006944.1](#)
- RefSeq Size:** 1019 bp
- RefSeq ORF:** 636 bp
- Locus ID:** 6694
- UniProt ID:** [Q13103](#)
- Cytogenetics:** 2q37.1
- Protein Families:** Secreted Protein
- Gene Summary:** This gene encodes a secreted phosphoprotein that is a member of the cystatin superfamily. [provided by RefSeq, Oct 2008]

Product images:



Circular map for RG210116