

Product datasheet for **RG210113**

MS4A6E (NM_139249) Human Tagged ORF Clone

Product data:

Product Type: Expression Plasmids
Product Name: MS4A6E (NM_139249) Human Tagged ORF Clone
Tag: TurboGFP
Symbol: MS4A6E
Mammalian Cell Selection: Neomycin
Vector: pCMV6-AC-GFP (PS100010)
E. coli Selection: Ampicillin (100 ug/mL)
ORF Nucleotide Sequence: >RG210113 representing NM_139249
Red=Cloning site Blue=ORF Green=Tags(s)

TTTTGTAATACGACTCACTATAGGGCGGCCGGAATTCGTCGACTGGATCCGGTACCGAGGAGATCTGCC
GCC**CGCATCGCC**

ATGACATCACAACCTATTTCCAATGAGACCATCATAATGCTCCCATCAAATGTCATCAACTTCTCCCAAG
CAGAGAAACCCGAACCCACCAACCAGGGGCAGGATAGCCTGAAGAAACGTCTACAGGCAAAAGTCAAAGT
TATTGGGGTGCATAGCAGCCTGGCTGGAAGCATTCTGAGTGCTCTGTCTGCCCTGGTGGGTTTCATTCTC
CTGTCTGTCAACCCGGCTGCATTAATCCTGCCTCATTGCAGTGAAGTTGGACGAAAAGGATATACCAA
CCAGACTTCTTTCTTATGATTATCATTACACCTACACCATGGACTGCCATAGAGCCAAGCCAGTCT
GGCTGGAACCTGTCTCTGATGCTGGTTTCTACTGTGTTGGAGTTCTGCCTAGCTGTGCTCACTGCTGTG
CTGCAGTGGAAACAGACTGTC

ACGCGTACGCGGCCGCTCGAG - GFP Tag - GTTTAA

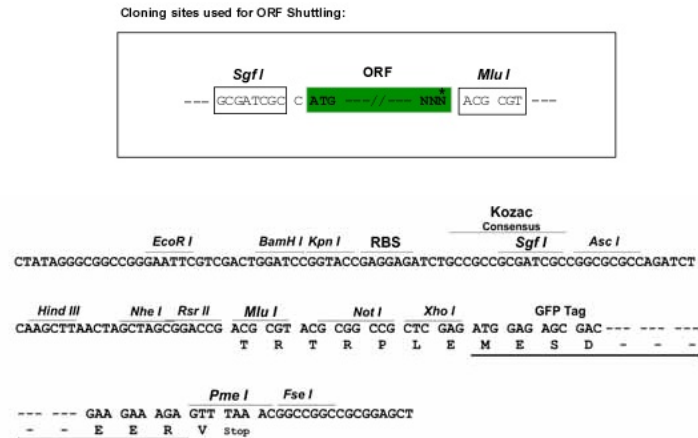
Protein Sequence: >RG210113 representing NM_139249
Red=Cloning site Green=Tags(s)
MTSQPISNETIIMLPSNVINFSQAQKPEPTNQGDLSLKKRLQAKVKVIGVHSSLAGSILSALSALVGFIL
LSVNPAALNPASLQCKLDEKDIPTRLLLSYDYHSPYTMDCBRAKASLAGTSLMLVSTVLEFCLAVLTAV
LQWKQTV

TRTRPLE - GFP Tag - V

Restriction Sites: Sgfl-MluI



[View online »](#)

Cloning Scheme:


ACCN: NM_139249

ORF Size: 441 bp

OTI Disclaimer: The molecular sequence of this clone aligns with the gene accession number as a point of reference only. However, individual transcript sequences of the same gene can differ through naturally occurring variations (e.g. polymorphisms), each with its own valid existence. This clone is substantially in agreement with the reference, but a complete review of all prevailing variants is recommended prior to use. [More info](#)

OTI Annotation: This clone was engineered to express the complete ORF with an expression tag. Expression varies depending on the nature of the gene.

Components: The ORF clone is ion-exchange column purified and shipped in a 2D barcoded Matrix tube containing 10ug of transfection-ready, dried plasmid DNA (reconstitute with 100 ul of water).

Reconstitution Method:

1. Centrifuge at 5,000xg for 5min.
2. Carefully open the tube and add 100ul of sterile water to dissolve the DNA.
3. Close the tube and incubate for 10 minutes at room temperature.
4. Briefly vortex the tube and then do a quick spin (less than 5000xg) to concentrate the liquid at the bottom.
5. Store the suspended plasmid at -20°C. The DNA is stable for at least one year from date of shipping when stored at -20°C.

RefSeq: [NM_139249.3](#)

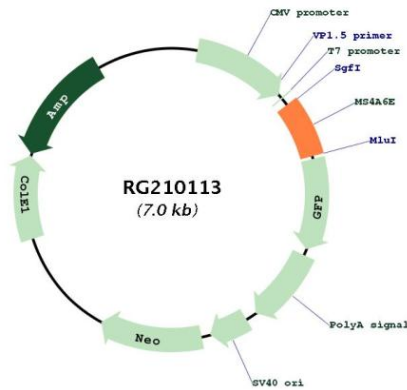
RefSeq Size: 660 bp

RefSeq ORF: 444 bp

Locus ID: 245802

UniProt ID: [Q96DS6](#)
Cytogenetics: 11q12.2
Protein Families: Druggable Genome, Transmembrane
Gene Summary: This gene encodes a member of the membrane-spanning 4A gene family. Members of this nascent protein family are characterized by common structural features and similar intron/exon splice boundaries and display unique expression patterns among hematopoietic cells and nonlymphoid tissues. The gene encoding this protein is localized to 11q12.3, among a cluster of family members. [provided by RefSeq, Jul 2008]

Product images:



Circular map for RG210113