

Product datasheet for **RG210110**

p53 AIP1 (TP53AIP1) (NM_022112) Human Tagged ORF Clone

Product data:

Product Type: Expression Plasmids
Product Name: p53 AIP1 (TP53AIP1) (NM_022112) Human Tagged ORF Clone
Tag: TurboGFP
Symbol: TP53AIP1
Synonyms: P53AIP1
Mammalian Cell Selection: Neomycin
Vector: pCMV6-AC-GFP (PS100010)
E. coli Selection: Ampicillin (100 ug/mL)
ORF Nucleotide Sequence: >RG210110 representing NM_022112
 Red=Cloning site Blue=ORF Green=Tags(s)

TTTTGTAATACGACTCACTATAGGGCGGCCGGAATTCGTCGACTGGATCCGGTACCGAGGAGATCTGCC
 GCC**CGATCGCC**

ATGGGATCTTCTCTGAGGCGAGCTTCAGATCTGCTCAAGCTTCTGCAGTGGGGCCAGGAGGCAGGGCC
 TGGGCAGGGGAGACCAGAACCTCTCGGTGATGCCTCCGAATGGCAGGGCTCAGACACACACACTGGCTG
 GGTTTCAGATCCCTTAGTTTTGGTGCCCAAGTTCACGGAGGGTGCCGGGAATAGAAGCTCTGTCAGTC
 TCGTCTGGATCTTGGTCCTCAGCAACTGTCTGGATCCTGACAGGCCTTGGTCTAGGTCTCCAGGCCTT
 TCCTTCTGGAGCCACAGTGCTTAGAGACAGGCCACTGGGGTCAACATTTGAGCTCAGCTATGATCAGAA
 AAAAGCACCGTTGAGTTGCAG

ACGCGTACGCGGCCGCTCGAG - GFP Tag - GTTTAA

Protein Sequence: >RG210110 representing NM_022112
 Red=Cloning site Green=Tags(s)
 MGSSEASFRSAQASCSGARRQGLGRGDQNLVMPNNGRAQHTPGWVSDPLVLAQVHGRCRGIEALSV
 SSGSWSSATVWILTGLGLSRPFLPGATVLRDRPLGSAFELSYDQKKAPLRLQ

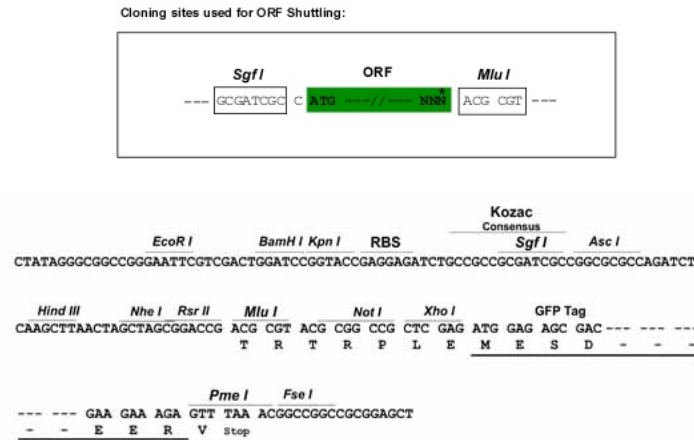
TRTRPLE - GFP Tag - V

Restriction Sites: Sgfl-MluI

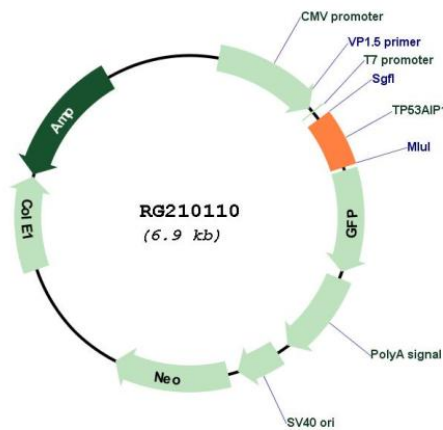


[View online »](#)

Cloning Scheme:



Plasmid Map:



ACCN:

NM_022112

ORF Size:

372 bp

OTI Disclaimer:

The molecular sequence of this clone aligns with the gene accession number as a point of reference only. However, individual transcript sequences of the same gene can differ through naturally occurring variations (e.g. polymorphisms), each with its own valid existence. This clone is substantially in agreement with the reference, but a complete review of all prevailing variants is recommended prior to use. [More info](#)

OTI Annotation:	This clone was engineered to express the complete ORF with an expression tag. Expression varies depending on the nature of the gene.
Components:	The ORF clone is ion-exchange column purified and shipped in a 2D barcoded Matrix tube containing 10ug of transfection-ready, dried plasmid DNA (reconstitute with 100 ul of water).
Reconstitution Method:	<ol style="list-style-type: none">1. Centrifuge at 5,000xg for 5min.2. Carefully open the tube and add 100ul of sterile water to dissolve the DNA.3. Close the tube and incubate for 10 minutes at room temperature.4. Briefly vortex the tube and then do a quick spin (less than 5000xg) to concentrate the liquid at the bottom.5. Store the suspended plasmid at -20°C. The DNA is stable for at least one year from date of shipping when stored at -20°C.
RefSeq:	NM_022112.2 , NP_071395.2
RefSeq Size:	1278 bp
RefSeq ORF:	375 bp
Locus ID:	63970
UniProt ID:	Q9HCN2
Cytogenetics:	11q24.3
Protein Families:	Druggable Genome
Protein Pathways:	p53 signaling pathway
Gene Summary:	This gene is specifically expressed in the thymus, and encodes a protein that is localized to the mitochondrion. The expression of this gene is inducible by p53, and it is thought to play an important role in mediating p53-dependent apoptosis. Alternatively spliced transcript variants encoding different isoforms have been described for this gene. [provided by RefSeq, Oct 2011]