

## Product datasheet for **RG210065**

### **STAT6 (NM\_003153) Human Tagged ORF Clone**

#### **Product data:**

Product Type:	Expression Plasmids
Product Name:	STAT6 (NM_003153) Human Tagged ORF Clone
Tag:	TurboGFP
Symbol:	STAT6
Synonyms:	D12S1644; IL-4-STAT; STAT6B; STAT6C
Mammalian Cell Selection:	Neomycin
Vector:	pCMV6-AC-GFP (PS100010)
E. coli Selection:	Ampicillin (100 ug/mL)



[View online »](#)

**ORF Nucleotide Sequence:**

&gt;RG210065 representing NM\_003153.

Blue=ORF Red=Cloning site Green=Tag(s)

```

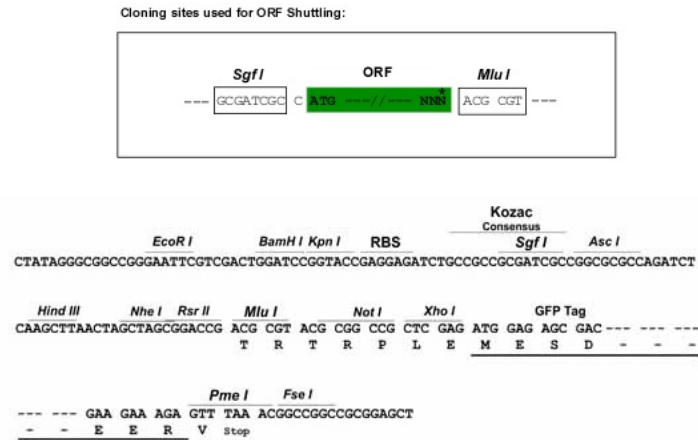
GCTCGTTTAGTGAACCGTCAGAATTTTGTAAACGACTCACTATAGGGCGGCCGGGAATTCGTGACTG
GATCCGGTACCGAGGAGATCTGCCGCCACGATCGCC
ATGTCCTGTGGGGTCTGGTCTCCAAGATGCCCCAGAAAAAGTGCAGCGGCTCTATGTGACTTTCCC
CAACACTGCGGCATCTTCTGGGTGACTGGCTGGAGAGCCAGCCCTGGGAGTTCTGGTCCGCTCCGAC
GCCTTCTGCTGCAACTTGACTAGTGCCCTACTTTCAGACACTGTCCAGCACCTTCAGGCCTCGGTGGGA
GAGCAGGGGGAGGGGAGCACCATCTTGCAACACATCAGCACCCCTTGAGAGCATATATCAGAGGGACCCC
CTGAAGCTGGTGGCCACTTTCAGACAAATACTTCAAGGAGAGAAAAAGCTGTTATGGAACAGTTCGCGC
CACTTGCCAAATGCCTTTCCTGGAAGCAGGAAGAAGTCAAGTTAAGACAGGCTTGGGAGGCTGCAG
CACCGAGTAGGGGAGATCCACCTTCTCCGAGAAGCCCTGCAGAAGGGGGCTGAGGCTGGCCAAGTGTCT
CTGCACAGCTTGATAGAACTCTGCTAATGGGACTGGGCAAGTGAAGCCCTGGCCATGCTACTGCAG
GAGACCACTGGAGAGCTAGAGGCAGCCAAAGCCCTAGTGTGAAGAGGATCCAGATTTGAAACGGCAG
CAGCAGCTGGCAGGAATGGCGCACCGTTTGAGGAGAGCCTGGCCCACTCCAGGAGAGGTGTAAAGC
CTGGTGGACATTTATTCCAGCTACAGCAGGAGGTAGGGCGGGCTGGTGGGGAGCTTGAGCCCAAGACC
CGGCATCGCTGACTGGCCGGCTGGATGAAGTCTGAGAACCTCGTACCAGTTGCTTCTGGTGGAG
AAGCAGCCCCCAGGACTGAAGACTCAGACCAAGTTCAGGCTGGAGTTCGATTCTGTTGGGCTTG
AGGTTCTGGGGGCCAGCCAAGCCTCCGCTGGTCCAGGGCCGACATGGTGACAGAGAAGCAGGCGCGG
GAGCTGAGTGTGCTCAGGGTCTGGGGCTGGAGCAGAAAGCACTGGAGAAATCATCAACAACACTGTG
CCCTTGGAGAACAGCATTCTGGAACTGCTGCTGCTGCTGCTGCTGCTGCTGCTGCTGCTGCTGCTGCTG
AAGCGGTGTGAGCGGAAGGGCACTGAGTCTGTACAGAGGAGAAGTGCCTGTGCTTCTTCTGCCAGC
TTCACACTTGGCCCGGCAAACTCCCATCCAGCTCCAGGCCCTGTCTCTGCCCCGTGGTGCATCGTC
CATGGCAACCAAGACAACAATGCCAAAGCCACTATCCTGTGGGACAATGCCTTCTGAGATGGACCGC
GTGCCCTTGTGGTGGCTGAGCGGGTGCCTGGGAGAAGATGTGTGAACTCTGAACCTGAAGTTATG
GCTGAGGTGGGGACCAACCGGGGCTGCTCCCAGAGCACTTCTCTTCTGGCCAGAAGATCTTCAAT
GACAACAGCCTCAGTATGGAGGCCTTCCAGCACCGTTCTGTGCTCCTGGCAGTTCAACAAGGAGATC
CTGCTGGGCCGTGGCTTACCTTTTGGCAGTGGTTTGTGGTGTCTGGACCTCACCAACGCTGTCTC
CGGAGCTACTGGTCTGACCGCTGATCATTGGCTTCATCAGCAAACAGTACGTTACTAGCCTTCTCTC
AATGAGCCCGACGGAACCTTCTCCTCCGCTTCCAGGACTCAGAGATTGGGGGCATCACCATTGCCCAT
GTCATCCGGGGCCAGGATGGCTTCCACAGATAGAGAACATCCAGCCATTCTCTGCCAAAGACCTGTCC
ATTCGCTCACTGGGGACCGAATCCGGGATCTTGCTCAGCTCAAAAATCTCTATCCCAAGAAGCCCAAG
GATGAGGCTTCCGGAGCCACTACAAGCCTGAACAGATGGGTAAGGATGGCAGGGGTTATGTCCCAGCT
ACCATCAAGATGACCGTGGAAAGGGACCAACCACTTCTACCCCAGAGCTCCAGATGCCTACCATGGTG
CCTTCTTATGACCTTGAATGGCCCTGATTCTCCATGAGCATGCAGCTTGGCCAGATATGGTGGCC
CAGGTGTACCCACCACACTTCACTCCATCCCCCGTATCAAGGCCTCTCCCCAGAAGAATCAGTCAAC
GTGTTGTGAGCCTTCCAGGAGCCTCACCTGCAGATGCCCCCAGCCTGGCCAGATGAGCCTGCCCTT
GACCAGCCTCACCCAGGGCCTGCTGCCGTGCCAGCCTCAGGAGCATGCTGTGTCAGCCCTGACCCC
CTGCTCTGCTCAGATGTGACCATGGTGGAAAGACAGCTGCCTGAGCCAGCCAGTGCAGCGTTTCTCAG
GGCACTTGGATTGGTGAAGACATATCCCTCCTCTGCTGCCTCCCACTGAACAGGACCTACTAAGCTT
CTCCTGGAGGGCAAGGGGAGTCGGGGGAGGGTCTTGGGGGCACAGCCCTCTGCAGCCCTCCAC
TATGGGAATCTGGGATCTCAATGTCCACATGGACCTAAGGGCCAACCTCAGTTGG
ACGCGTACGCGGCCGCTCGAG – GFP Tag – GTTTAAAC
  
```

**Protein Sequence:** >Peptide sequence encoded by RG210065  
 Blue=ORF Red=Cloning site Green=Tag(s)

```

MSLWGLVSKMPPEKVQRLVYDFPQHLRHLLGDWLESQPWEFLVGSDAFCCNLTSALLSDTVQHLQASVG
EQGEGSTILQHIISTLESYQRDPLKLVATFRQILQGEKKAVMEQFRHLPMPFHWKQEELKFKTGLRRLQ
HRVGEIHLLREALQKGAAGQVSLHSLIETPANGTGPSEALAMLLQETTGELEAAKALVLKRIQIWKRQ
QQLAGNGAPFEESLAPLQERCESLVDIYSQLQQEVGAAGGELEPKTRASLTGRLDEVLRTLVTSCFLVE
KQPPQVLKTQTKFQAGVRFLLGLRFLGAPAKPPLVRADMVTEKQARELSVPQGGGAGAESTGEIINNTV
PLENSIPGNCCSALFKNLLLLKKIKRCERKGTESVTEEKCAVLFSASF TLGPGKLP IQLQALSLPLVVIV
HGNQDNNAKATILWDAFSEMDRVPFVVAERVPWEKMCETLNLKMAEVGTNRGLLPEHFLFLAQKIFN
DNSLSMEAFQHRVSWSQFNKEILLGRGFTFWQWFDGVLDLTKRCLRSYWSDRLIIGFISKQYVTSLLL
NEPDGTFLLRFSDEIGGITIAHVIRGQDGSPQIENIQPFSAKDLSIRSLGDRIRDLAQLKNLYPKKPK
DEAFRSHYKPEQMKGDKGRGYVPATIKMTVERDQPLTPPELQMPTMVPSYDLGMAPDSSMSMQLGPMVP
QVYPPHSHSIPPYQGLSPEESVNVLSAFQEPHLQMPPSLGQMSLPFDQPHQGLLPCQPQEHAVSSPDP
LLCSDVTMVEDSCLSQPVTAFPQGTWIGEDI FPPPLL PTEQDLTKLLLEGGESGGSLGAQPLLQPSH
YQSGISMSHMDLRANLSW
TRTRPLEMEDESGLPAMEIECRITGTLNGVEFELVGGGEGTPEQGRMTNKMKSTKGALTFSPYLLSHV
MGYGFYHFGTYPSTYENPFLHAINNGGYTNRIEKYEDGGVLHVFSYRYEAGRVIGDFKVMGTGFPEP
SVIFTDKIIRSNATVEHLHPMGDNDLDGSFTRTFSLRDGGYSSVVDSMHMFKSAIHPSILQNGGPMFA
FRRVEEDHSNTELGIVEYQHAFKTPDADAGEERV
  
```

**Restriction Sites:** Sgfl-Mlul

**Cloning Scheme:**


**ACCN:** NM\_003153

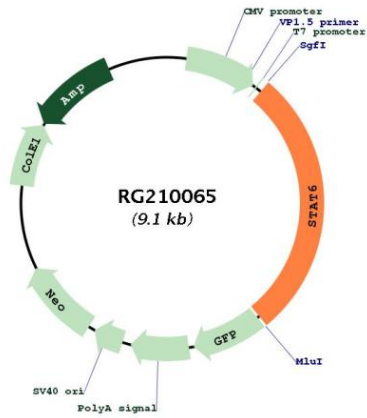
**ORF Size:** 2541 bp

**OTI Disclaimer:** Due to the inherent nature of this plasmid, standard methods to replicate additional amounts of DNA in *E. coli* are highly likely to result in mutations and/or rearrangements. Therefore, OriGene does not guarantee the capability to replicate this plasmid DNA. Additional amounts of DNA can be purchased from OriGene with batch-specific, full-sequence verification at a reduced cost. Please contact our customer care team at [custsupport@origene.com](mailto:custsupport@origene.com) or by calling 301.340.3188 option 3 for pricing and delivery.

The molecular sequence of this clone aligns with the gene accession number as a point of reference only. However, individual transcript sequences of the same gene can differ through naturally occurring variations (e.g. polymorphisms), each with its own valid existence. This clone is substantially in agreement with the reference, but a complete review of all prevailing variants is recommended prior to use. [More info](#)

<b>OTI Annotation:</b>	This clone was engineered to express the complete ORF with an expression tag. Expression varies depending on the nature of the gene.
<b>Components:</b>	The ORF clone is ion-exchange column purified and shipped in a 2D barcoded Matrix tube containing 10ug of transfection-ready, dried plasmid DNA (reconstitute with 100 ul of water).
<b>Reconstitution Method:</b>	<ol style="list-style-type: none"><li>1. Centrifuge at 5,000xg for 5min.</li><li>2. Carefully open the tube and add 100ul of sterile water to dissolve the DNA.</li><li>3. Close the tube and incubate for 10 minutes at room temperature.</li><li>4. Briefly vortex the tube and then do a quick spin (less than 5000xg) to concentrate the liquid at the bottom.</li><li>5. Store the suspended plasmid at -20°C. The DNA is stable for at least one year from date of shipping when stored at -20°C.</li></ol>
<b>RefSeq Size:</b>	3993 bp
<b>RefSeq ORF:</b>	2544 bp
<b>Locus ID:</b>	6778
<b>UniProt ID:</b>	<a href="#">P42226</a>
<b>Cytogenetics:</b>	12q13.3
<b>Domains:</b>	SH2, STAT
<b>Protein Families:</b>	Druggable Genome, ES Cell Differentiation/IPS, Stem cell relevant signaling - DSL/Notch pathway, Stem cell relevant signaling - JAK/STAT signaling pathway, Transcription Factors
<b>Protein Pathways:</b>	Jak-STAT signaling pathway
<b>MW:</b>	94.2 kDa
<b>Gene Summary:</b>	The protein encoded by this gene is a member of the STAT family of transcription factors. In response to cytokines and growth factors, STAT family members are phosphorylated by the receptor associated kinases, and then form homo- or heterodimers that translocate to the cell nucleus where they act as transcription activators. This protein plays a central role in exerting IL4 mediated biological responses. It is found to induce the expression of BCL2L1/BCL-X(L), which is responsible for the anti-apoptotic activity of IL4. Knockout studies in mice suggested the roles of this gene in differentiation of T helper 2 (Th2) cells, expression of cell surface markers, and class switch of immunoglobulins. Alternative splicing results in multiple transcript variants.[provided by RefSeq, May 2010]

Product images:



Circular map for RG210065