

Product datasheet for **RG210043**

PPM1F (NM_014634) Human Tagged ORF Clone

Product data:

Product Type:	Expression Plasmids
Product Name:	PPM1F (NM_014634) Human Tagged ORF Clone
Tag:	TurboGFP
Symbol:	PPM1F
Synonyms:	CAMKP; CaMKPase; FEM-2; hFEM-2; POPX2
Mammalian Cell Selection:	Neomycin
Vector:	pCMV6-AC-GFP (PS100010)
E. coli Selection:	Ampicillin (100 ug/mL)



[View online »](#)

ORF Nucleotide Sequence:

>RG210043 representing NM_014634
 Red=Cloning site Blue=ORF Green=Tags(s)

TTTTGTAATACGACTCACTATAGGGCGGCCGGAATTCGTCGACTGGATCCGGTACCGAGGAGATCTGCC
 GCCCGCATCGCC

ATGTCCTCTGAGCCCCACAGAAGAGCAGCCCAATGGCCAGTGGAGCTGAGGAGACCCAGGCTTCTCTGG
 ACACGCTCTGCAAGACTTCCCAGCCCTGCTGAACCCAGAGGACCCTCTGCCATGGAAGGCCACAGGGAC
 GGTGCTCAGCCAGGAGGAGTGGAGGGCAGCTGGCTGAGCTGGCCATGGGCTTCTGGGACGACAGGAAG
 GCCCGCCACCACTTGTCTGCTCTGGCCACGAAGCAGTTTACAGCTGCTACAGACAGACCTTTCCG
 AATTCAGGAAGTTGCCAGGGAGGAAGAAGAAGAGGAGGAGGACGATGACGAGGAAAAGGCCCTGTGAC
 CTTGCTGGATGCCAAAGCCTGGCACAGAGTTTCTTTAACCGCTTTGGGAAGTCGCGGCCAGTGGCAG
 AAGCAGGTGCCATTGGCTGCCGGGCCCTCACAGCGGCAGTGGCTGGTCTCCATCCACGCCATCCGGAACA
 CTCGCCGAAGATGGAGGACCGGCAGTGTCCCTCCCTTCAACCAGCTCTTCGGCTGTCTGACCC
 TGTGAACCGCCTACTTTGCTGTGTTGATGGTCACGGAGGCGTGGATGCTGCGAGGTACGCCGCTGTC
 CAGGTGCACACCAACGCTGCCCGCCAGCCAGAGCTGCCACAGACCCTGAGGGAGCCCTCAGAGAAGCCT
 TCCGGCGCACCGACCAGATGTTTCTCAGGAAAGCCAAGCGAGAGCGGCTGCAGAGCGGCACCACAGGTGT
 GTGTGCGCTCATTGCAGGAGCGACCCTGCACGTCGCTGGCTCGGGGATCCCAGGTCATTTTGGTACAG
 CAGGGACAGGTGGTGAAGCTGATGGAGCCACACAGACCAGAACGGCAGGATGAGAAGGCGCGCATTGAAG
 CATTGGGTGGCTTTGTGTCTCACATGGACTGCTGGAGAGTCAACGGGACCCTGGCCGTCTCCAGAGCCAT
 CGGGATGTCTCCAGAAGCCCTACGTGTCTGGGAGGCCGATGCAGCTTCCCGGCCGCTGACGGGCTCC
 GAGGACTACCTGCTGCTTGCTGTGATGGCTTCTTTGACGTCGTACCCACCAGGAAGTTGTTGGCTGG
 TCCAGAGCCACCTGACCAGGCAGCAGGGCAGCGGGCTCCGTGTCGCCGAGGAGCTGGTGGCTGCCGCCG
 GGAGCGGGCTCCACGACAACATCACGGTCATGGTGGTCTTCCCTCAGGGACCCCAAGAGCTGCTGGAG
 GCGGGAACCGAGGAGAAGGGGACCCCAAGCAGAAGGGAGGAGGAGGACTTGCCTCCAGCCTTCCAG
 AACCTGAGACCCAGGCTCCACCAAGAAGC

ACGCGTACGCGGCCGCTCGAG - GFP Tag - GTTTAA

Protein Sequence:

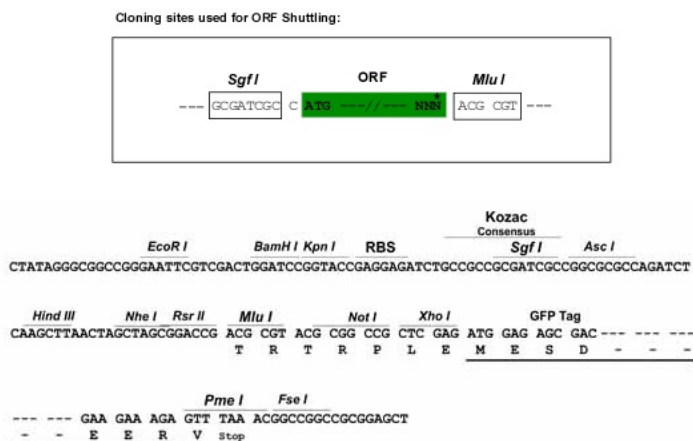
>RG210043 representing NM_014634
 Red=Cloning site Green=Tags(s)

MSSGAPQKSSPMASGAETPGFLDILLQDFPALLNPEDPLPWKAPGTVLSQEEVEGELAEALAMGFLGSRK
 APPPLAALAHEAVSLLQTDLSEFRKLPREEEEEEDDDEEKAPVLLDAQSLAQSFNRLWEVAGQWQ
 KQVPLAARASQRQWLVSIIAIRNTRRKMEDRHVSLPSFNQLFGLSDPVNRAYFAVFDGHGGVDAARYAAV
 HVHTNAARQPELPTDPEGALREAFRRDQMFLRKAKRERLQSGTTGVCAL IAGATLHVAVLWLDGSDQVILVQ
 QGQVVKLMEPHRPERQDEKARIEALGGFVSHMDCWRVNGTLAVSRAIGDVFQKPYVSGEADAASRALTGS
 EDYLLACDGFDDVVPHEVVLVQSHLTRQQSGLRVAEELVAAARERGSNDNITVMVFLRDPQELLE
 GGNQEGDPQAEGRRLPSSLPEPETQAPPRS

TRTRPLE - GFP Tag - V

Restriction Sites:

Sgfl-MluI

Cloning Scheme:


ACCN: NM_014634

ORF Size: 1359 bp

OTI Disclaimer: The molecular sequence of this clone aligns with the gene accession number as a point of reference only. However, individual transcript sequences of the same gene can differ through naturally occurring variations (e.g. polymorphisms), each with its own valid existence. This clone is substantially in agreement with the reference, but a complete review of all prevailing variants is recommended prior to use. [More info](#)

OTI Annotation: This clone was engineered to express the complete ORF with an expression tag. Expression varies depending on the nature of the gene.

Components: The ORF clone is ion-exchange column purified and shipped in a 2D barcoded Matrix tube containing 10ug of transfection-ready, dried plasmid DNA (reconstitute with 100 ul of water).

Reconstitution Method:

1. Centrifuge at 5,000xg for 5min.
2. Carefully open the tube and add 100ul of sterile water to dissolve the DNA.
3. Close the tube and incubate for 10 minutes at room temperature.
4. Briefly vortex the tube and then do a quick spin (less than 5000xg) to concentrate the liquid at the bottom.
5. Store the suspended plasmid at -20°C. The DNA is stable for at least one year from date of shipping when stored at -20°C.

RefSeq: [NM_014634.2](#), [NP_055449.1](#)

RefSeq Size: 5169 bp

RefSeq ORF: 1365 bp

Locus ID: 9647

UniProt ID: [P49593](#)

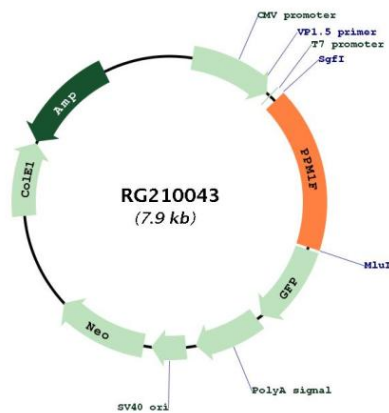
Cytogenetics: 22q11.22

Domains: PP2C

Protein Families: Druggable Genome, Phosphatase

Gene Summary: The protein encoded by this gene is a member of the PP2C family of Ser/Thr protein phosphatases. PP2C family members are known to be negative regulators of cell stress response pathways. This phosphatase can interact with Rho guanine nucleotide exchange factors (PIX), and thus block the effects of p21-activated kinase 1 (PAK), a protein kinase mediating biological effects downstream of Rho GTPases. Calcium/calmodulin-dependent protein kinase II gamma (CAMK2G/CAMK-II) is found to be one of the substrates of this phosphatase. The overexpression of this phosphatase or CAMK2G has been shown to mediate caspase-dependent apoptosis. An alternatively spliced transcript variant has been identified, but its full-length nature has not been determined. [provided by RefSeq, Jul 2008]

Product images:



Circular map for RG210043