

## Product datasheet for **RG210028**

### **PIGH (NM\_004569) Human Tagged ORF Clone**

#### Product data:

**Product Type:** Expression Plasmids  
**Product Name:** PIGH (NM\_004569) Human Tagged ORF Clone  
**Tag:** TurboGFP  
**Symbol:** PIGH  
**Synonyms:** GPI-H  
**Mammalian Cell Selection:** Neomycin  
**Vector:** pCMV6-AC-GFP (PS100010)  
**E. coli Selection:** Ampicillin (100 ug/mL)  
**ORF Nucleotide Sequence:** >RG210028 representing NM\_004569  
Red=Cloning site Blue=ORF Green=Tags(s)

TTTTGTAATACGACTCACTATAGGGCGGCCGGAATTCGTCGACTGGATCCGGTACCGAGGAGATCTGCC  
GCC**CGATCGCC**

ATGGAGGATGAGCGGAGCTTTTCGGATATCTGCGCGGCCCGCTGGCGTGCAGCGCCGCTACTACTCCC  
CGTCCTGCCGGAATTCTGCCTCAGCTGCCCTCGGCTCTCGTTCGCTCACCCTGTACCTGCAC  
GGTGTGGCTGGCGCCTACGGACTCTTCACCCTCTGCGAGAACAGCATGATCCTCTCTGCTGCCATCTC  
ATCACCCTCTTAGGCTGCTTGGTTATCTCCATTTTGTGAAGATTGATCAGGAGACTCTGTTAATCATTG  
ATTCCCTTGGCATTGAGATGACTTCATCTTATGCTTCAGGCAAAGAAAGCACTACCTTCATAGAAATGGG  
CAAGGTCAAGGATATTGTCATCAATGAGGCCATTTACATGCAGAAGGTGATTTACTACCTCTGCATCTTA  
TTGAAAGATCCAGTGGAACCACATGGGATATCCCAAGTAGTACCCGCTCTCCAGAGTGCCAAGCCCCGGC  
TGGACTGCTTGATTGAAGTATACAGGAGCTGCCAGGAGATCCTGGCACACCAGAAAGCCACATCAACAAG  
CCCA

**ACGCGT**ACGCGGCCGCTCGAG - GFP Tag - GTTTAA

**Protein Sequence:** >RG210028 representing NM\_004569  
Red=Cloning site Green=Tags(s)

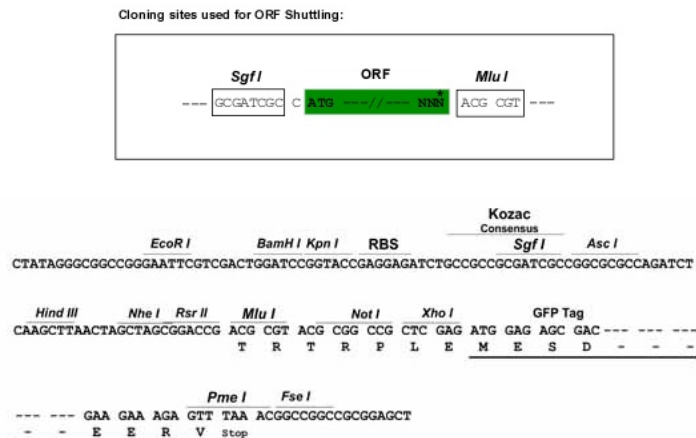
MEDERSFSDICGGRLALQRRYSPSCREFCLSCPRLSLRSLTAVTCTVWLAAYGLFTLCENSMLSAAIF  
ITLLGLLGYLHFVKIDQETLLIIDSLGIQMTSSYASGKESTTFIEMGKVKDIVINEAIYMQKVIYYLCIL  
LKDPVEPHGISQVVPVFQSAKPRLDCLIEVYRSCQEILAHQKATSTSP

**TRTRPLE** - GFP Tag - V

**Restriction Sites:** SgfI-MluI



[View online »](#)

**Cloning Scheme:**


**ACCN:** NM\_004569

**ORF Size:** 564 bp

**OTI Disclaimer:** The molecular sequence of this clone aligns with the gene accession number as a point of reference only. However, individual transcript sequences of the same gene can differ through naturally occurring variations (e.g. polymorphisms), each with its own valid existence. This clone is substantially in agreement with the reference, but a complete review of all prevailing variants is recommended prior to use. [More info](#)

**OTI Annotation:** This clone was engineered to express the complete ORF with an expression tag. Expression varies depending on the nature of the gene.

**Components:** The ORF clone is ion-exchange column purified and shipped in a 2D barcoded Matrix tube containing 10ug of transfection-ready, dried plasmid DNA (reconstitute with 100 ul of water).

**Reconstitution Method:**

1. Centrifuge at 5,000xg for 5min.
2. Carefully open the tube and add 100ul of sterile water to dissolve the DNA.
3. Close the tube and incubate for 10 minutes at room temperature.
4. Briefly vortex the tube and then do a quick spin (less than 5000xg) to concentrate the liquid at the bottom.
5. Store the suspended plasmid at -20°C. The DNA is stable for at least one year from date of shipping when stored at -20°C.

**RefSeq:** [NM\\_004569.5](#)

**RefSeq Size:** 1393 bp

**RefSeq ORF:** 567 bp

**Locus ID:** 5283

**UniProt ID:** [Q14442](#)

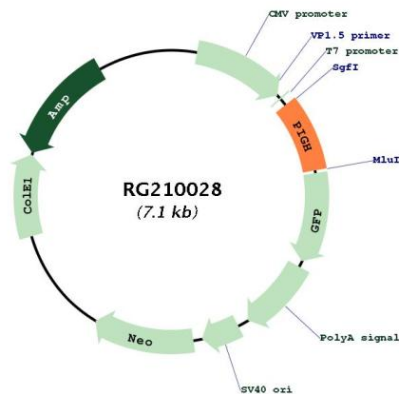
**Cytogenetics:** 14q24.1

**Protein Families:** Transmembrane

**Protein Pathways:** Glycosylphosphatidylinositol(GPI)-anchor biosynthesis, Metabolic pathways

**Gene Summary:** This gene encodes an endoplasmic reticulum associated protein that is involved in glycosylphosphatidylinositol (GPI)-anchor biosynthesis. The GPI anchor is a glycolipid found on many blood cells and which serves to anchor proteins to the cell surface. The protein encoded by this gene is a subunit of the GPI N-acetylglucosaminyl (GlcNAc) transferase that transfers GlcNAc to phosphatidylinositol (PI) on the cytoplasmic side of the endoplasmic reticulum. [provided by RefSeq, Jul 2008]

### Product images:



Circular map for RG210028