

## Product datasheet for **RG209960**

### **BICD2 (NM\_001003800) Human Tagged ORF Clone**

#### **Product data:**

Product Type:	Expression Plasmids
Product Name:	BICD2 (NM_001003800) Human Tagged ORF Clone
Tag:	TurboGFP
Symbol:	BICD2
Synonyms:	bA526D8.1; SMALED2; SMALED2A; SMALED2B
Mammalian Cell Selection:	Neomycin
Vector:	pCMV6-AC-GFP (PS100010)
E. coli Selection:	Ampicillin (100 ug/mL)



[View online »](#)

**ORF Nucleotide Sequence:**

>RG209960 representing NM\_001003800  
 Red=Cloning site Blue=ORF Green=Tags(s)

TTTTGTAATACGACTCACTATAGGGCGGCCGGAATTCGTCGACTGGATCCGGTACCGAGGAGATCTGCC  
 GCC**CGGATCGCC**

ATGTCGGCGCCGTCGGAGGAGGAGTACGCGCGGCTGGTATGGAGGCGCAGCCGGAGTGGCTGCGCG  
 CCGAGGTGAAGCGGCTGTCCACGAGCTGGCCGAGACCACGCGTGAGAAGATCCAGGCGGCCGAGTACGG  
 GCTGGCGGTGCTCGAGGAGAAGCACAGCTCAAGCTGCAGTTCGAGGAGCTCGAGGTGGACTATGAGGCT  
 ATCCGAGCGAGATGGAGCAGCTCAAGGAGGCCTTTGGACAAGCACACAAACCACAAGAAGTGGCTG  
 CTGACGGAGAGAGCCGGGAGGAGCCTGATCCAGGAGTCGGCCTCAAGGAGCAGTACTACGTGCGGAA  
 GGTGCTAGAGCTGCAGACGGAGCTGAAGCAGTTGCGCAATGTCTCACCAACACGCGAGTCGGAGAATGAG  
 CGCCTGGCCTCTGTGGCCAGGAGCTGAAGGAGATCAACCAGAATGTGGAGATCCAGCGTGGCCGCTGC  
 GGGATGACATCAAGGAGTACAAATTCGGGAAGCTCGTCTGCTGCAGGACTACTCGGAATGGAGGAGGA  
 GAACATCAGCCTGCAGAAGCAAGTGTCTGTGCTCAGACAGAACCAGGTGGAGTTTGGAGGCTCAAGCAT  
 GAGATCAAGCGTCTGGAGGAGGAGACCGAGTACCTCAACAGCCAGCTGGAGGATGCCATCCGCCTCAAGG  
 AGATCTCAGAGCGGCAGCTGGAGGAGGCGCTGGAGACCCTGAAGACGGAGCGCAACAGAAGAACAGCCT  
 GCGCAAGGAGCTGTCACTACATGAGCATCAATGACTCCTTCTACACCAGCCACCTGCATGTCTCGCTG  
 GATGGCCTCAAGTTCAGTGACGATGCTGCCGAGCCCAACAACGATGCCGAGGCCCTGGTCAATGGCTTTG  
 AGCACGGCGGCCGTCGCAAGCTGCCACTGGACAACAAGACCTCCACGCCAAGAAGGAGGGCCCTCGCACC  
 GCCCTCCCCAGCCTCGTCTCCGACCTACTCAGTGAGCTCAACATCTCTGAGATCCAGAAGCTGAAGCAG  
 CAGCTGATGCAGATGGAGCGGAAAAGGCGGGCCTGCTGGCAACGCTGCAGGACACACAGAAGCAGCTGG  
 AGCACAGCGGGGCTCCCTGTGAGAACAGCAGGAGAAGGTGACCCGCTCACAGAGAATCTGAGTGCCT  
 GCGGCGCCTGCAGGCCAGCAAGGAGCGGACAGACGCCCTGGACAACGAGAAGGACCGTGACAGCCATGAG  
 GATGGGGACTACTACGAGGTGGACATCAACGGGCTGAGATCTTGGCCTGCAAGTACCATGTGGCTGTGG  
 CTGAGGCTGGCGAGCTCCGCGAGCAGCTCAAGGCACTGCGCAGCACGACGAGGCTCGTGGGCCAGCA  
 CGCCGAGGAGAAGGGCCGCTATGAGGCTGAGGGCCAGGCACTCACGGAGAAGGTCTCCCTGCTAGAGAAG  
 GCCAGCCGCCAGGACCGGAGCTGCTGGCCGGCTGGAGAAGGAGCTAAAGAAGGTGAGCGACGTGCGCCG  
 GCGAGACACAGGGCAGCCTGAGTGTGGCCAGGATGAGCTGGTGACCTTCAAGTGGAGGCTGGCCAACT  
 CTACCACCAGTGTGCATGTGCAACAATGAGACACCAACCGTGTGATGCTGGACTACTACCGGAGGGC  
 CAGGGCGGGCCGCGCACCAAGTCCCAGGGGGCCGACCAAGCCCGAGGCGGTGGCCGGCGCTCACCCA  
 TCCTCCTACCAAGGGGCTGCTGGCTCCTGAGGCGGGCCGAGCAGATGGTGGGACGGGGACAGCAGCCC  
 CTGCGCTGGCTCCTCACTGCCATCACCCCTGAGTGACCCACGCCGGGAGCCCATGAACATCTACAACCTG  
 ATCGCTATCATCCGTGACCAGATCAAGCACCTGCAGGCAGCCGTGGACCGCACCAGGAGCTGTACGCC  
 AGCGCATTGCCTCTCAGGAGCTGGGCCCGCCGTGGACAAGGACAAGGAAGCGCTTATGGAGGAGATCCT  
 CAAGCTGAAGTCGCTGCTCAGCACCAAGCGGGAGCAGATCACCACGCTGCGCACTGTGCTCAAGGCCAAC  
 AAGCAGACGGCCGAGGTGGCCCTTGCCAACCTGAAGAGCAAGTATGAGAATGAGAAGGCCATGGTTACCG  
 AGACCATGATGAAGCTGCGCAATGAGCTCAAGGCCCTCAAGGAGGACGACGCCACCTTCTCCTCGCTGCG  
 TGCTATGTTTGCACCAGGTGTGACGAGTACATTACACAGCTGGATGAGATGCAGCGGACAGTGGCGGCT  
 GCTGAGGACGAGAAGAAGACGCTGAACCTGCTGCTGCGCATGGCCATCCAGCAGAAGCTGGCGCTGACCC  
 AGCGGCTGGAGCTGCTCGAGCTGGACCATGAGCAGACCCGGCGTGGCCGTGCCAAAGCCGCCCGAAGAC  
 CAAGCCAGCCACACCGAGCGTAAGTACACCTGTGCCTGTGCCAGCGACAGGGCCGAGGGCACCGGGCTG  
 GCCAACCAAGTGTCTGCAGCGAGAAGCACAGCATTTACTGTGAT

AGCGGACCGACGCGTACGCGGCCGCTCGAG – GFP Tag – GTTTAA

**Protein Sequence:** >RG209960 representing NM\_001003800  
 Red=Cloning site Green=Tags(s)

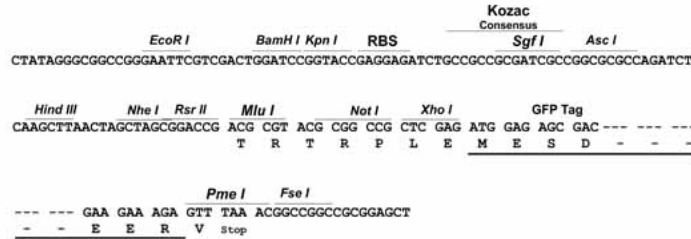
```
MSAPSEEEYARLVMEAPQEWLRAEVKRLSHELAEATTREKIQAAEYGLAVLEEKHQLKLQFEELEVDYEA
IRSEMEQLKEAFGQAHTNHKKVAADGESREESLIQESASKEQYYVRKVLELQTELKQLRNVLNTQSENE
RLASVAQELKEINQVVEIQRGRLRDDIKEYKFREARLLQDYSELEEEENISLQKQVSVLRQNQVFEGLKH
EIKRLEEEETEYLNQLEDAIRLKEISERQLEEALETLKTEREQKNSLRKELSHYMSINDSFYTSHLHVSL
DGLKFSDDAAEPNDAEALVNGFEHGGLAKLPLDNKTSTPKKEGLAPPSPLVSDLLSELNISEIQKQKQ
QLMQMEREKAGLLATLQDTQKQLEHTRGSLSEQQEKVTRLTENLSALRRLQASKERQTALDNEKDRDSHE
DGDYVEVDINGPEILACKYHVAVAEAGELREQLKALRSTHEAREAQAHEEKGRYEAEQALTEKVSLLK
ASRQDRELLARLEKELKKVSDVAGETQGSLSVAQDELVTFSEELANLYHHVCMCNNETPNRVMLDYYREG
QGGAGRTSPGGRTSPEARGRRSPILLPKGLLAPEAGRADGGTGDSSSPGSSLPSPSDPRREPMNIYNL
IAIIRDQIKHLQAAVDRTTEL SRQRIASQELGPAVDKDKEALMEEILKLSLLSTKREQITTLRTVLKAN
KQTAEVALANLKSKEYENKAMVTE TMMKLRNELKALKEDAATFSSLRAMFATRCDEYITQLDEMQRQLAA
AEDEKKTLSLLRMAIQKQLALTQRLELLELDHEQTRRGRAKAAPKTKPATPSVSHTCACASDRAEGTGL
ANQVFCSEKHSIYCD
```

SGPTRRRLE - GFP Tag - V

**Restriction Sites:** Sgfl-RsrII

**Cloning Scheme:**

Cloning sites used for ORF Shuttling:



**ACCN:** NM\_001003800

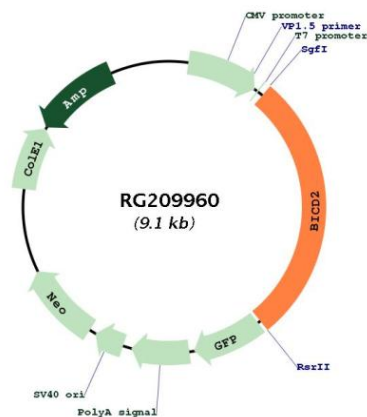
**ORF Size:** 2565 bp

**OTI Disclaimer:** Due to the inherent nature of this plasmid, standard methods to replicate additional amounts of DNA in E. coli are highly likely to result in mutations and/or rearrangements. Therefore, OriGene does not guarantee the capability to replicate this plasmid DNA. Additional amounts of DNA can be purchased from OriGene with batch-specific, full-sequence verification at a reduced cost. Please contact our customer care team at [custsupport@origene.com](mailto:custsupport@origene.com) or by calling 301.340.3188 option 3 for pricing and delivery.

The molecular sequence of this clone aligns with the gene accession number as a point of reference only. However, individual transcript sequences of the same gene can differ through naturally occurring variations (e.g. polymorphisms), each with its own valid existence. This clone is substantially in agreement with the reference, but a complete review of all prevailing variants is recommended prior to use. [More info](#)

<b>OTI Annotation:</b>	This clone was engineered to express the complete ORF with an expression tag. Expression varies depending on the nature of the gene.
<b>Components:</b>	The ORF clone is ion-exchange column purified and shipped in a 2D barcoded Matrix tube containing 10ug of transfection-ready, dried plasmid DNA (reconstitute with 100 ul of water).
<b>Reconstitution Method:</b>	<ol style="list-style-type: none"><li>1. Centrifuge at 5,000xg for 5min.</li><li>2. Carefully open the tube and add 100ul of sterile water to dissolve the DNA.</li><li>3. Close the tube and incubate for 10 minutes at room temperature.</li><li>4. Briefly vortex the tube and then do a quick spin (less than 5000xg) to concentrate the liquid at the bottom.</li><li>5. Store the suspended plasmid at -20°C. The DNA is stable for at least one year from date of shipping when stored at -20°C.</li></ol>
<b>RefSeq:</b>	<a href="#">NM_001003800.2</a>
<b>RefSeq Size:</b>	6433 bp
<b>RefSeq ORF:</b>	2568 bp
<b>Locus ID:</b>	23299
<b>UniProt ID:</b>	<a href="#">Q8TD16</a>
<b>Cytogenetics:</b>	9q22.31
<b>Gene Summary:</b>	This gene is one of two human homologs of <i>Drosophila</i> bicaudal-D and a member of the Bicoid family. It has been implicated in dynein-mediated, minus end-directed motility along microtubules. It has also been reported to be a phosphorylation target of NIMA related kinase 8. Two alternative splice variants have been described. [provided by RefSeq, Jul 2008]

## Product images:



Circular map for RG209960