

Product datasheet for **RG209958**

CHAD (NM_001267) Human Tagged ORF Clone

Product data:

Product Type: Expression Plasmids
Product Name: CHAD (NM_001267) Human Tagged ORF Clone
Tag: TurboGFP
Symbol: CHAD
Synonyms: SLRR4A
Mammalian Cell Selection: Neomycin
Vector: pCMV6-AC-GFP (PS100010)
E. coli Selection: Ampicillin (100 ug/mL)
ORF Nucleotide Sequence: >RG209958 representing NM_001267
Red=Cloning site Blue=ORF Green=Tags(s)

TTTTGTAATACGACTCACTATAGGGCGGCCGGAATTCGTCGACTGGATCCGGTACCGAGGAGATCTGCC
GCC**CGATCGCC**

ATGGTCCGCCAATGCTCTTGCTCAGCCTCGGCCTCTGGCTGGTCTGCTGCCGGCGCTGGCCGCCTGCC
CCCAGAAGTCCACTGCCACAGCGACCTGCAGCACGTCTGCGACAAGGTGGGCTGCAGAAGATCCC
CAAGGTGTCAGAGAAGACCAAGCTGCTCAACCTACAGCGCAACAACCTCCCGGTGCTGGCTGCCAATTCCG
TTCCGGGCCATGCCGAACCTCGTGTATTGACCTGCAGCACTGCCAGATCCGCGAGGTGGCCGCCGGTG
CCTTCCGGCCCTCAAGCAACTTATCTACTTGTACCTGTCCATAACGACATCCGCGTGTGCGCGCAGG
TGCTTTCGACGACCTGACCGAGCTGACCTACCTTACCTGGACCACAACAAGGTCACTGAGCTGCCCGG
GGTTGCTCTCCCGCTGGTCAACCTCTTCATCTTGCAGCTCAACAACAACAAGATCCGTGAGCTGCGCG
CAGGCGCCTTCCAGGGAGCCAAGGACCTGCGCTGGCTCTACCTGTGCGAAAACGCGTTGAGCTCCCTGCA
GCCCAGGGCCCTGGACGATGTGGAGAACCTCGCCAAATTCACGTGGACAGGAACCCAGCTGTCCAGCTAC
CCCTCAGCTGCCCTGAGCAAGCTACGGTGGTGGAGGAGCTGAAGCTGTCCACAACCCCTGAAAAGCA
TCCCGGACAATGCCTTCCAGTCTTTGGCAGATACCTGGAGACCTCTGGCTGGACAACCAACCTGGA
GAAGTTCTCAGATGGTGCCTTCTGGGTGTAACCACGCTGAAACACGTCCATTTGGAGAACAACCCGTTG
AACCAGTACCCTCCAACCTCCCTTTCGACAGCCTGGAGACCTCGCCCTTACCAATAACCCCTGGAAGT
GTACCTGCCAGCTCCGGGGCCTTCGGCGGTGGCTGGAAGCAAGGCCCTCCGCCCCAGATGCCACCTGTGC
CTCACCTGCCAAGTTCAAGGGCCAGCACATCCGTGACACGGACGCCTCCGCAGCTGCAAGTTCCCACC
AAGAGTCCAAGAAAGCTGGCCGCAT

AG**CGGACCG**ACGCGTACGCGGCCGCTCGAG - GFP Tag - GTTTAA



[View online »](#)

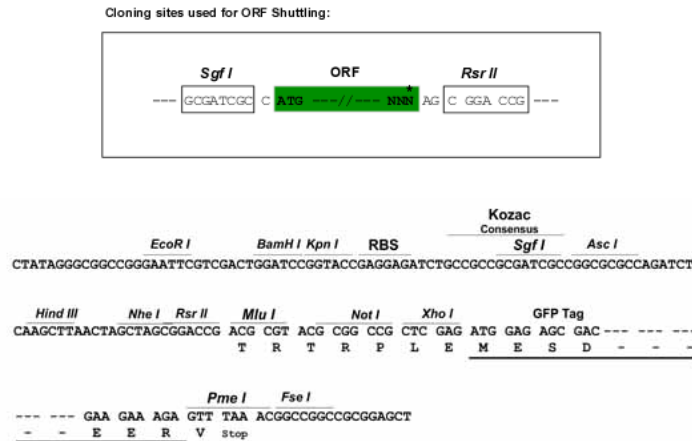
Protein Sequence: >RG209958 representing NM_001267
 Red=Cloning site Green=Tags(s)

MVRPMLLLSLGLLAGLLPALAACPNCHCHSDLQHVICDKVGLQKIPKVSEKTKLLNLQRNFPVLAANS
 FRAMPNLVSLHLQHCQIREVAAGAFRGLKQLIYLYL SHNDIRVLRAGAFDDL TELTYLYLDHNKVTLP
 R GLLSPLVNLFIQLNNKIRELRAGAFQGA KDLRWLYLSENALSSLQPGALDDVENLAKFHVDRNQLSSY
 PSAALSCLR VVEELKLSHNPLKSIPDNAFQSFGRYLETLWLDNTNLEKFS DGAF LGVTTLKHVHLENNRL
 NQLPSNFPFDSLETLAL TNNPWKCTCQLRGLRRWLEAKASRPDATCASPAKFKGQHIRD TDAFRSCKFPT
 KRSKKAGRH

SGP TRRRLE - GFP Tag - V

Restriction Sites: SgfI-RsrII

Cloning Scheme:



ACCN: NM_001267

ORF Size: 1077 bp

OTI Disclaimer: The molecular sequence of this clone aligns with the gene accession number as a point of reference only. However, individual transcript sequences of the same gene can differ through naturally occurring variations (e.g. polymorphisms), each with its own valid existence. This clone is substantially in agreement with the reference, but a complete review of all prevailing variants is recommended prior to use. [More info](#)

OTI Annotation: This clone was engineered to express the complete ORF with an expression tag. Expression varies depending on the nature of the gene.

Components: The ORF clone is ion-exchange column purified and shipped in a 2D barcoded Matrix tube containing 10ug of transfection-ready, dried plasmid DNA (reconstitute with 100 ul of water).

Reconstitution Method:

1. Centrifuge at 5,000xg for 5min.
2. Carefully open the tube and add 100ul of sterile water to dissolve the DNA.
3. Close the tube and incubate for 10 minutes at room temperature.
4. Briefly vortex the tube and then do a quick spin (less than 5000xg) to concentrate the liquid at the bottom.
5. Store the suspended plasmid at -20°C. The DNA is stable for at least one year from date of shipping when stored at -20°C.

RefSeq: [NM_001267.1](#), [NP_001258.1](#)

RefSeq Size: 1789 bp

RefSeq ORF: 1080 bp

Locus ID: 1101

UniProt ID: [O15335](#)

Cytogenetics: 17q21.33

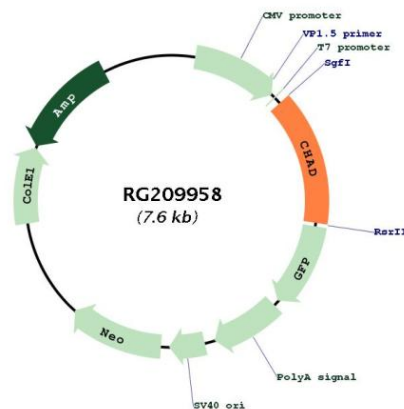
Domains: LRRNT, LRRCT, LRR, LRR_TYP, LRR_PS

Protein Families: Secreted Protein

Protein Pathways: ECM-receptor interaction, Focal adhesion

Gene Summary: Chondroadherin is a cartilage matrix protein thought to mediate adhesion of isolated chondrocytes. The protein contains 11 leucine-rich repeats flanked by cysteine-rich regions. The chondroadherin messenger RNA is present in chondrocytes at all ages. [provided by RefSeq, Jul 2008]

Product images:



Circular map for RG209958