

## Product datasheet for **RG209883**

### ITPRIP (NM\_033397) Human Tagged ORF Clone

#### Product data:

Product Type:	Expression Plasmids
Product Name:	ITPRIP (NM_033397) Human Tagged ORF Clone
Tag:	TurboGFP
Symbol:	ITPRIP
Synonyms:	bA127L20; bA127L20.2; DANGER; KIAA1754
Mammalian Cell Selection:	Neomycin
Vector:	pCMV6-AC-GFP (PS100010)
E. coli Selection:	Ampicillin (100 ug/mL)



[View online »](#)

**ORF Nucleotide Sequence:**

>RG209883 representing NM\_033397  
 Red=Cloning site Blue=ORF Green=Tags(s)

TTTTGTAATACGACTCACTATAGGGCGGCCGGAATTCGTCGACTGGATCCGGTACCGAGGAGATCTGCC  
 GCC**CGGATCGCC**

ATGCCATGGGGCTCTCCGCTGTGTCTGGTGGTGGTGACGGCCATCATCAACCACCCGCTGCTGTTC  
 CGGGGAGAACGCCACAGTCCCCGAGAACGAGGAGGAGATCATCCGCAAGATGCAGGCGCACAGGAGAA  
 GCTGCAGCTGGAGCAGTTGCGCCTGGAGAGGAGTGGCTCGGCTGGCGGCCGAAAAGGAGGCACCTGGAG  
 CAGGTGGCGGAGGAGGCGAGGCAGCAGAACGAGACACGCGTGGCCTGGGACCTCTGGAGCACCTCTGCA  
 TGATCCTCTTCTGATGATCGAGGTGTGGCGCAGGACCACCAGGAGGGGCCCTCACCTGAGTGCCTGGG  
 CGGTGAGGAGGATGAGCTGCCTGGGCTGGGGGGCGCCCCCTGCAGGGCCTCACCTGCCAACAAAGGCC  
 ACGCTTGGCCACTTTTATGAGCGCTGCATCCGGGGGGCCACGGCCGATGCAGCCCGTACCCGGGAGTTCC  
 TGAAGGCTTCGTGGATGACTTGTGGAAGCCCTGAGGAGCCTCTGCAACCGGGACACCGACATGGAGGT  
 GGAGGACTTCATTGGCGTGGACAGCATGTACGAGAAGTGGCAGGTGGACAGGCCACTGCTGTGCCACCTT  
 TTCGTGCCCTTACACCCCCGAGCCCTACCGCTTCCACCCAGAGCTCTGGTGTCCGGCCGCTCAGTGC  
 CCCTGGATCGCCAGGGCTACGGCCAGATCAAGGTGGTCCGCGCCGATGGGACACATTGAGCTGCATCTG  
 CGGAAGACCAAGCTCGGGGAAGACATGCTGTGTCTCCTGCACGGCAGGAACAGCATGGCGCCTCCCTGC  
 GGCGACATGGAGAACCTGCTGTGTGCCACAGATTCCTGTACCTGGACACGATGCAGGTCATGAAGTGGT  
 TCCAGACGGCCCTCACAGAGCCTGGAAGGGCATCGCCCAAGTACGAGTTCGACCTGGCCTTTGGCCA  
 GCTGGACAGCCCGGGTCCCTGAAGATCAAGTTCGGTTCAGGGAAGTTCATGCCCTTCAACCTGATTCCT  
 GTGATCCAGTGTGATGACTCGGACCTGTACTTTGTCTCCACCTTCCCAGGGAGCCCTCTGAGGGCACCC  
 CAGCCTCCAGCACAGACTGGCTCCTGTCTTTGCTGTCTATGAGCGACACTTCTCAGGACGACACTAAA  
 GGCACTGCCCGAGGGCGCCTGCCACCTCAGCTGCCTGCAGATAGCATCCTTCTGTCTCCAAGCAGAGC  
 CGCCTGACCGGTCCAGCGGGCTCAGCAGCTACCACCTGAAGACGGCCCTACTGCACCTCCTACTCTCC  
 GGCAGGCCCGGACTGGAAGGGCGGGCAGCTGGACGCTCGTCTGCACGAGTTGCTGTGCTTCTGGAGAA  
 GAGCTTGTCCAGAAGAAGCTCCACCCTTCTTCCATCGGCAACCGCAAGGTGCCTGAGGCCATGGGACTC  
 CCTGAGGCCGTGCTCAGGGCCGAGCCCTCAACCTTCCGGCCCTTCGTCTGCAGCGAAGCCTTTACC  
 GTAAGACTGGACTCCTTCTATGAGATGCTCAAGAATGCCCCAGCGCTCATTAGCGAGTATCCCTACA  
 TGTCCTCCAGACCAGCCTACCCAAAAAGC

AG**CGGACCG**ACGCGTACGCGGCCGCTCGAG - GFP Tag - GTTTAA

**Protein Sequence:**

>RG209883 representing NM\_033397  
 Red=Cloning site Green=Tags(s)

MAMGLFRVCLVVVTAIINHPLLFPRENATVPENEEIIRKMQAHQEKLQLEQLRLEEEVARLAAEKEALE  
 QVAEEGRQNETRVAWDLWSTLCMILFLMIEVWRQDHQEGPSPECLGGEDELPLGGAPLQGLTLPNKA  
 TLGHFYERCIRGATADAARTREFLEGFVDDLLEALRSLCNRDMDMEVEDFIGVDSMYENWQVDRPLLCHL  
 FVPFTPPEPYRFHPELWCSGRSVPLDRQYGQIKVVRADGDTLSCICGKTKLGEDMLCLLHGRNSMAPP  
 GDMENLLCATDSL YLDTMQVMKWFQAL TRAWKGI AHKYEFDLAFGLDSPGSLKIKFRSGKFMFNLIP  
 VIQCDDSDLYFVSHLPREPSEGTPASSTDWLLSFVYERHFLRRTLKALPEGACHLSCLQIASFLLSKQS  
 RL TGP SGLSSYHLKTALLHLLLRQAADWKAGQLDARLHELLCFLEKSLQKLLHFFIGNRKVPEAMGL  
 PEAVLRAEPLNLF RPFVLRSLYRKTLD SFYEMLKNAPALISEYSLHVP SDQPTPKS

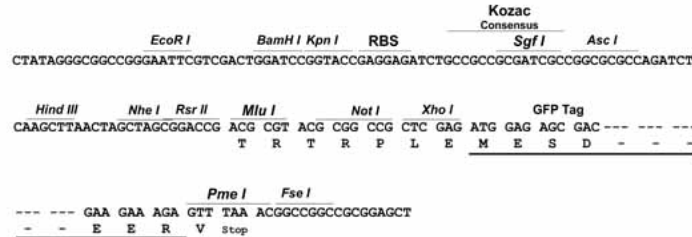
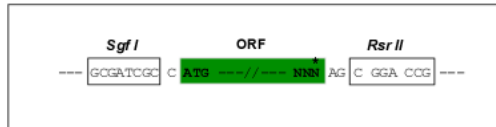
SGP**TRRRLE** - GFP Tag - V

**Restriction Sites:**

Sgfl-RsrII

**Cloning Scheme:**

Cloning sites used for ORF Shuttling:


**ACCN:** NM\_033397

**ORF Size:** 1641 bp

**OTI Disclaimer:** The molecular sequence of this clone aligns with the gene accession number as a point of reference only. However, individual transcript sequences of the same gene can differ through naturally occurring variations (e.g. polymorphisms), each with its own valid existence. This clone is substantially in agreement with the reference, but a complete review of all prevailing variants is recommended prior to use. [More info](#)
**OTI Annotation:** This clone was engineered to express the complete ORF with an expression tag. Expression varies depending on the nature of the gene.

**Components:** The ORF clone is ion-exchange column purified and shipped in a 2D barcoded Matrix tube containing 10ug of transfection-ready, dried plasmid DNA (reconstitute with 100 ul of water).

- Reconstitution Method:**
1. Centrifuge at 5,000xg for 5min.
  2. Carefully open the tube and add 100ul of sterile water to dissolve the DNA.
  3. Close the tube and incubate for 10 minutes at room temperature.
  4. Briefly vortex the tube and then do a quick spin (less than 5000xg) to concentrate the liquid at the bottom.
  5. Store the suspended plasmid at -20°C. The DNA is stable for at least one year from date of shipping when stored at -20°C.

**RefSeq:** [NM\\_033397.3](#)
**RefSeq Size:** 4378 bp

**RefSeq ORF:** 1644 bp

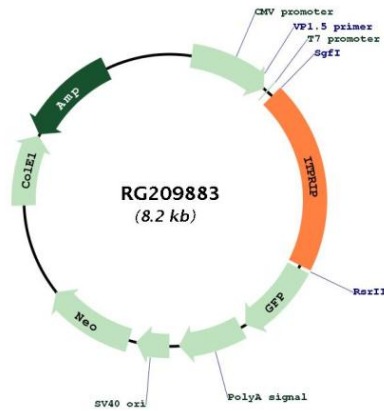
**Locus ID:** 85450

**UniProt ID:** [Q8IWB1](#)

Cytogenetics: 10q25.1

Gene Summary: This gene encodes a membrane-associated protein that binds the inositol 1,4,5-trisphosphate receptor (ITPR). The encoded protein enhances the sensitivity of ITPR to intracellular calcium signaling. Alternative splicing results in multiple transcript variants. [provided by RefSeq, Dec 2012]

**Product images:**



Circular map for RG209883