

Product datasheet for **RG209844**

IGFBP7 (NM_001553) Human Tagged ORF Clone

Product data:

Product Type:	Expression Plasmids
Product Name:	IGFBP7 (NM_001553) Human Tagged ORF Clone
Tag:	TurboGFP
Symbol:	IGFBP7
Synonyms:	AGM; FSTL2; IBP-7; IGFBP-7; IGFBP-7v; IGFBPRP1; MAC25; PSF; RAMSVPS; TAF
Mammalian Cell Selection:	Neomycin
Vector:	pCMV6-AC-GFP (PS100010)
E. coli Selection:	Ampicillin (100 ug/mL)
ORF Nucleotide Sequence:	>RG209844 representing NM_001553. Blue=ORF Red=Cloning site Green=Tag(s)

```
GCTCGTTTAGTGAACCGTCAGAATTTTGTAAACGACTCACTATAGGGCGCCGGGAATTCGTCGACTG
GATCCGGTACCGAGGAGATCTGCCGCCGCGATCGCC
ATGGAGCGGCCGTCGCTGCGCGCCCTGCTCCTCGGCGCCGCTGGGCTGCTGCTCCTGCTCCTGCCCTC
TCCTCTTCCTCCTCTTCGGACACCTGCGGCCCTGCGAGCCGGCCTCTGCCCGCCCTGCCCGGCTG
GGCTGCCTGTGGGCGAGACCCGCGACGCGTGC GGCTGCTGCCCTATGTGCGCCCGCGGAGGGCGAG
CCGTGCGGGGTGGCGGCCCGGCAGGGGGTACTGCGCGCCGGGCATGGAGTGC GTGAAGAGCCGCAAG
AGGCGGAAGGGTAAAGCCGGGGCAGCAGCCGGCGTCCGGGTGTAAAGCGCGTGTGCGTGTGCAAGAGC
CGTACCCGGTGTGCGGCAGCGACGGCACCACTACCCGAGCGGCTGCCAGCTGCGCGCCGCCAGCCAG
AGGGCCGAGAGCCGCGGGGAGAAGGCCATCACCCAGGTCAGCAAGGGCACCTGCGAGCAAGTCTTCC
ATAGTGACGCCCCCAAGGACATCTGGAATGCTACTGGTCCCGAGGTGTA CTTGAGCTGTGAGGTATC
GGAATCCCACACCTGTCTCATCTGGAACAAGGTAAAAAGGGTCACTATGGAGTTCAAAGGACAGAA
CTCCTGCCTGGTACCGGGACAACCTGGCCATTACAGCCGGGTGGCCAGAAAAGCATGAAGTAACT
GGCTGGGTGCTGGTATCTCCTAAGTAAGGAAGATGCTGGAGAATATGAGTGCCATGCATCCAATTCC
CAAGGACAGGCTTCAGCATCAGCAAAAATTACAGTGGTTGATGCCTTACATGAAATACCAGTGAAAAA
GGTGAAGGTGCCGAGCTA
ACGCGGCCGCTCGAG - GFP Tag - GTTTAAAC
```



[View online »](#)

Protein Sequence: >Peptide sequence encoded by RG209844
 Blue=ORF Red=Cloning site Green=Tag(s)

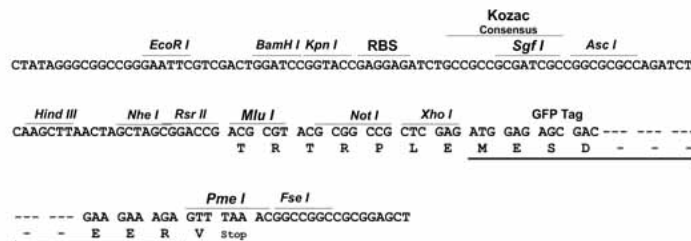
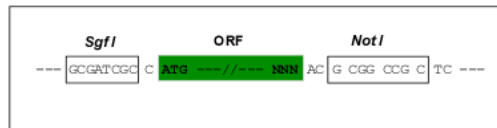
MERPSLRALLGAAGLLLLLPLSSSSSDTCGPCEPASCPLPPLGCLLGETRDACGCCPMCARGE
 GEGE PCGGGGAGRGYCAPGMECVKSRKRRKKGAGAAAGGPGVSGVCVCKSRYPVCGSDGTTYPSGQLRAASQ
 RAESRGEKAITQVSKGTCEQGPSIVTPPKDIWNVTGAQVYLSCEVIGIPTPVL IWNKVKRGHYGVQRTE
 LLPGDRDNLAIQTRGGPEKHEVTGWVLVSPLSKEDAGEYECHASNSQGGQASAKITVVDALHEIPVKK
 GEGAEI

TRPLEMESDESGLPAMEIECRITGTLNGVEFELVGGEGTPEQGRMTNKMKSTKGALTFSPYLLSHVMG
 YGFYHFGTYPSTYENPFLHAINNGGTYNTRIEKYEDGGVLHVSFSYRYEAGRVIGDFKVMGTGFPEDSV
 IFTDKIIRSNATVEHLHPMGDNDLDGSFTRTFLRDGGYSSVVDSHMHFKSAIHPSILQNGGPMFAFR
 RVEEDHSNTELGIVEYQHAFKTPDADAGEERV

Restriction Sites: SgfI-NotI

Cloning Scheme:

Cloning sites used for ORF Shutting:



ACCN: NM_001553

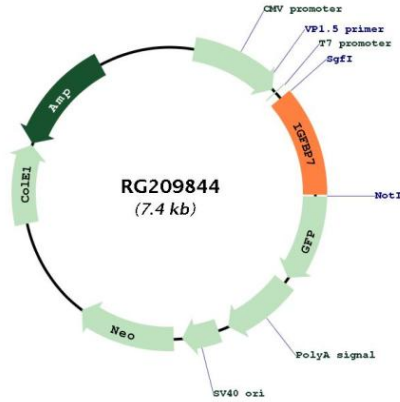
ORF Size: 846 bp

OTI Disclaimer: Due to the inherent nature of this plasmid, standard methods to replicate additional amounts of DNA in E. coli are highly likely to result in mutations and/or rearrangements. Therefore, OriGene does not guarantee the capability to replicate this plasmid DNA. Additional amounts of DNA can be purchased from OriGene with batch-specific, full-sequence verification at a reduced cost. Please contact our customer care team at custsupport@origene.com or by calling 301.340.3188 option 3 for pricing and delivery.

The molecular sequence of this clone aligns with the gene accession number as a point of reference only. However, individual transcript sequences of the same gene can differ through naturally occurring variations (e.g. polymorphisms), each with its own valid existence. This clone is substantially in agreement with the reference, but a complete review of all prevailing variants is recommended prior to use. [More info](#)

OTI Annotation:	This clone was engineered to express the complete ORF with an expression tag. Expression varies depending on the nature of the gene.
Components:	The ORF clone is ion-exchange column purified and shipped in a 2D barcoded Matrix tube containing 10ug of transfection-ready, dried plasmid DNA (reconstitute with 100 ul of water).
Reconstitution Method:	<ol style="list-style-type: none">1. Centrifuge at 5,000xg for 5min.2. Carefully open the tube and add 100ul of sterile water to dissolve the DNA.3. Close the tube and incubate for 10 minutes at room temperature.4. Briefly vortex the tube and then do a quick spin (less than 5000xg) to concentrate the liquid at the bottom.5. Store the suspended plasmid at -20°C. The DNA is stable for at least one year from date of shipping when stored at -20°C.
RefSeq:	NM_001553.3
RefSeq Size:	1124 bp
RefSeq ORF:	849 bp
Locus ID:	3490
UniProt ID:	Q16270
Cytogenetics:	4q12
Domains:	IB, kazal, IG
Protein Families:	Secreted Protein
MW:	29.1 kDa
Gene Summary:	This gene encodes a member of the insulin-like growth factor (IGF)-binding protein (IGFBP) family. IGFBPs bind IGFs with high affinity, and regulate IGF availability in body fluids and tissues and modulate IGF binding to its receptors. This protein binds IGF-I and IGF-II with relatively low affinity, and belongs to a subfamily of low-affinity IGFBPs. It also stimulates prostacyclin production and cell adhesion. Alternatively spliced transcript variants encoding different isoforms have been described for this gene, and one variant has been associated with retinal arterial macroaneurysm (PMID:21835307). [provided by RefSeq, Dec 2011]

Product images:



Circular map for RG209844