

Product datasheet for **RG209840**

p57 Kip2 (CDKN1C) (NM_000076) Human Tagged ORF Clone

Product data:

Product Type:	Expression Plasmids
Product Name:	p57 Kip2 (CDKN1C) (NM_000076) Human Tagged ORF Clone
Tag:	TurboGFP
Symbol:	p57 Kip2
Synonyms:	BWCR; BWS; KIP2; p57; p57Kip2; WBS
Mammalian Cell Selection:	Neomycin
Vector:	pCMV6-AC-GFP (PS100010)
E. coli Selection:	Ampicillin (100 ug/mL)
ORF Nucleotide Sequence:	>RG209840 representing NM_000076 Red=Cloning site Blue=ORF Green=Tags(s)

TTTTGTAATACGACTCACTATAGGGCGCCGGGAATTCGTCGACTGGATCCGGTACCGAGGAGATCTGCC
GCC**CGGATCGCC**

ATGTCGACGCGTCCCTCCGCAGCACATCCACGATGGAGCGTCTTGTGCCCCGTGGGACCTTCCCAGTAC
TAGTGCGCACCAGCGCCTGCCGAGCCTCTTCGGGCCGGTGGACCACGAGGAGCTGAGCCGCGAGCTGCA
GGCCCCCTGGCCGAGCTGAACGCCGAGGACCAGAACCCTGGGATTACGACTTCCAGCAGGACATGCCG
CTGCGGGGCCCTGGACGCCTGCAGTGGACCGAAGTGGACAGCGACTCGGTGCCCGCTTCTACCGCGAGA
CGGTGCAGGTGGGGCGCTGCCGCTGCTGCTGGCGCCGCGCCCGTCCGGTCCGGTGGCTGTAGCCCC
GCCCTCGAGCCGCGCCTGAGTCCCTCGACGGCCTCGAGGAGGCGCCGAGCAGCTGCCTAGTGTCCCG
GTCCCGGCCCGCGCTCCACCCGCCCCAGTCCCGGTCTGGCTCCAGCCCCGGCCCCGCTCCGGCTC
CGGTCCGGCTCCGGTCCGGTCCGGTCCGGTCCGGTCCGGTCCGGTCCGGTCCGGTCCGGTCCGGTCCGGT
TCCGGTCCGGTCCGGTCCGGTCCGGTCCGGTCCGGTCCGGTCCGGTCCGGTCCGGTCCGGTCCGGTCCGGT
GCCCGGCCCGGCCCGGACGCGGCGCCTCAAGAGAGCGCCGAGCAGGGCGGAACAGGGGACGCGCG
GCCAGGAGCCTCTCGTGACCAGCTGCACTCGGGGATTTCCGGACGTCCCGCGCCGGCACCGCGGCCG
CAGCGCCAACGGCGCGGCGATCAAGAAGCTGTCCGGCCCTCTGATCTCCGATTTCTCGCCAAGCGCAAG
AGATCAGCGCCTGAGAAGTCGTCCGGCGATGTCCCGCGCGGTCCCTCTCCAAGCGCCGCCCTGGCG
TGGGCTCGGTGGAGCAGACCCCGCGCAAGAGGCTGCGG

AG**CGGACCG**ACGCGTACGCGGCCGCTCGAG - GFP Tag - GTTTAA



[View online »](#)

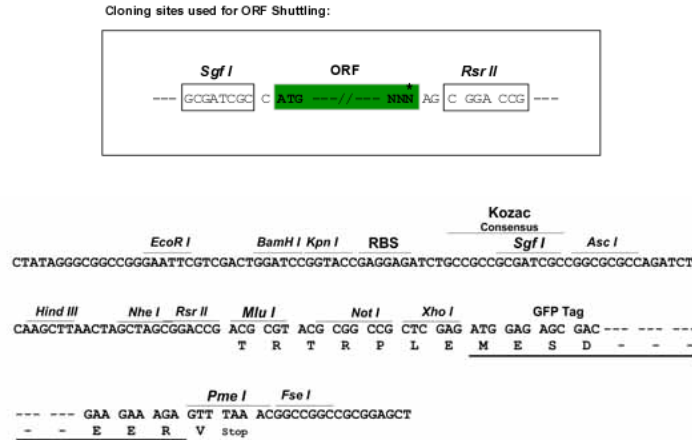
Protein Sequence: >RG209840 representing NM_000076
 Red=Cloning site Green=Tags(s)

MSDASLRSTSTMERLVARGTFPVLVRTSACRSLFGPVDHEELSRELQARLAELNAEDQNRWDYDFQQDMP
 LRGPGRLLQWTEVSDSVPAFYRETVQVGRCLLLAPRPVAVAVAVSPPLEPAAESLDGLEEAPEQLPSVP
 VPAPASTPPPVPVLAPAPAPAPVAAPVAAPVAVAVLAPAPAPAPAPAPVAAPAPAPAPAPAPAP
 APAPAPDAAPQESAEQGANQGQRGQEPLADQLHSGISGRPAAGTAAASANGAAIKKLSGPLISDFFAKRK
 RSAPEKSSGDVPAPCSPSPAAPGVGSVEQTPRKRLR

SGPTRRRLE - GFP Tag - V

Restriction Sites: SgfI-RsrII

Cloning Scheme:



ACCN: NM_000076

ORF Size: 948 bp

OTI Disclaimer: The molecular sequence of this clone aligns with the gene accession number as a point of reference only. However, individual transcript sequences of the same gene can differ through naturally occurring variations (e.g. polymorphisms), each with its own valid existence. This clone is substantially in agreement with the reference, but a complete review of all prevailing variants is recommended prior to use. [More info](#)

OTI Annotation: This clone was engineered to express the complete ORF with an expression tag. Expression varies depending on the nature of the gene.

Components: The ORF clone is ion-exchange column purified and shipped in a 2D barcoded Matrix tube containing 10ug of transfection-ready, dried plasmid DNA (reconstitute with 100 ul of water).

Reconstitution Method:

1. Centrifuge at 5,000xg for 5min.
2. Carefully open the tube and add 100ul of sterile water to dissolve the DNA.
3. Close the tube and incubate for 10 minutes at room temperature.
4. Briefly vortex the tube and then do a quick spin (less than 5000xg) to concentrate the liquid at the bottom.
5. Store the suspended plasmid at -20°C. The DNA is stable for at least one year from date of shipping when stored at -20°C.

RefSeq: [NM_000076.1](#), [NP_000067.1](#)

RefSeq Size: 1511 bp

RefSeq ORF: 951 bp

Locus ID: 1028

UniProt ID: [P49918](#)

Cytogenetics: 11p15.4

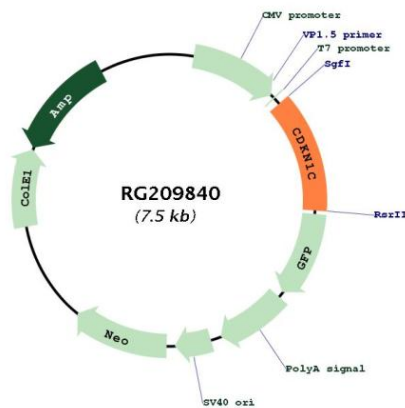
Domains: CDI

Protein Families: Druggable Genome

Protein Pathways: Cell cycle

Gene Summary: This gene is imprinted, with preferential expression of the maternal allele. The encoded protein is a tight-binding, strong inhibitor of several G1 cyclin/Cdk complexes and a negative regulator of cell proliferation. Mutations in this gene are implicated in sporadic cancers and Beckwith-Wiedemann syndrome, suggesting that this gene is a tumor suppressor candidate. Three transcript variants encoding two different isoforms have been found for this gene. [provided by RefSeq, Oct 2010]

Product images:



Circular map for RG209840