

Product datasheet for **RG209834**

PI 3 Kinase p85 beta (PIK3R2) (NM_005027) Human Tagged ORF Clone

Product data:

Product Type:	Expression Plasmids
Product Name:	PI 3 Kinase p85 beta (PIK3R2) (NM_005027) Human Tagged ORF Clone
Tag:	TurboGFP
Symbol:	PI 3 Kinase p85 beta
Synonyms:	MPPH; MPPH1; p85; p85-BETA; P85B
Mammalian Cell Selection:	Neomycin
Vector:	pCMV6-AC-GFP (PS100010)
E. coli Selection:	Ampicillin (100 ug/mL)



[View online »](#)

ORF Nucleotide
Sequence:

>RG209834 representing NM_005027
 Red=Cloning site Blue=ORF Green=Tags(s)

TTTTGTAATACGACTCACTATAGGGCGGCCGGGAATTCGTCGACTGGATCCGGTACCGAGGAGATCTGCC
 GCCGCGATCGCC

ATGGCGGGCCCTGAGGGCTTCCAGTACCGCGCTCTGTACCGTTCCGCCGGGAGCGCCGGAGGACCTGG
 AGCTGCTGCCCGGCGACGTGCTGGTAGTGAGCCGGCGGCCTTGCAGGCGCTGGGCGTGGCCGAGGGTGG
 CGAGCGCTGCCACAGAGCGTGGCTGGATGCCCGGCCTCAACGAGCGCACACGGCAGCGAGGTGACTTC
 CCTGGCACCTATGTGGAGTTCCTGGGGCCCGTGGCCCTGGCCCGCCCGGCCCTCGCCACGGGGCCCC
 GCCACTGCCCGCAGGCCCGTGTATGGGGCCCTGAGCCAGGCCTCACACTCCCGACTTGCCCGAGCA
 GTTCTCCACCTGATGTGGCTCCCTCTTCTGGTGAAGCTTGTGGAGGCCATTGAAAGGACAGGGCTG
 GACAGCGAATCTCACTACCGCCGGAGCTGCCCGACCGCGTACAGACTGGTCCCTGAGCGACGTGGATC
 AGTGGGACACGGCAGCCCTGGCTGACGGCATTAGAGCTTCTGTGCTGACTGCCCGCGCCGCTCGTGAC
 CCCCAGGCGCTCGGCCGAGGCGCGCCGGGCCCTGCGGGAGGCCGCGGGGCCGCTGGGGCCGGCGCTGGAG
 CCACCGACGCTGCCGCTGCACCGCGCGCTACGCTGCGCTTCTGCTCCAGCACCTGGGCCGCGTGGCC
 GCCCGCCCCGGCCCTGGGTCCCGCGTCCGGGCCCTGGGCGCCACCTTTGGGCCGCTGCTGCTGCGCGC
 GCCCGCGCCGCGTCTCGCCCGCCAGGGGGCGCTCCCGACGGGAGTGAGCCAGCCCTGACTTCCCG
 GCGCTGCTGGTGGAGAAGCTGCTTCAAGAACACTTGAAGAGCAGGAGGTTGCGCCCCAGCGCTGCCGC
 CTAACCCCCAAGGCAAAGCGGCCCCACAGTCTGGCCAATGGAGGGAGCCACCCTCCCTGCAGGA
 TGCTGAGTGGTACTGGGGGACATTTCAAGGGAGGAGTGAACGAGAACTCCGGGACACTCCCGATGGC
 ACCTTCTAGTCCGAGATGCTTCTAGCAAGATCCAGGGCGAGTACACGCTGACCCTCAGGAAAGGGGGA
 ACAATAAGCTGATCAAGTCTTCCACCGAGATGGGCACTATGGCTTCTCAGAGCCACTCACCTTCTGCTC
 CGTTGTGGACCTCATCAATCACTACCGCCACGAGTCTCTGGCCAGTACAATGCCAAGCTGGACACACGG
 CTCTCTACCTGTGTCAAATACCAGCAGGACCAGATTGTCAAGGAGGACAGCGTGGAGGCAGTGGGCG
 CCCAGCTTAAGTCTATCACCAGCAGTACCAGGACAAGAGCCGCGAGTATGACCAGCTTTATGAAGAGTA
 CACACGGACCTCCAGGAGCTGCAGATGAAGCGTACTGCAATTGAGGCCTTCAATGAGACTATCAAGATC
 TTTGAAGAGCAGGGCCAGACTCAAGAGAAATGCAGCAAGGAATACCTGGAGCGCTTCCGGCGTGAGGGCA
 ACGAGAAAGAGATGCAAAGGATCCTGCTGAACCTCCGAGCGGCTCAAGTCCCGCATTGCCGAGATCCATGA
 GAGCCGCACGAAGCTGGAGCAGCAGCTGCGGGCCAGGCCTCGGACAACAGAGAGATCGACAAGCGCATG
 AACAGCCTCAAGCCGGACCTCATGCAGCTGCGCAAGATCCGAGACCAGTACCTCGTGTGGCTCACCCAGA
 AAGGCGCCCGGCAGAAGAAAATCAACGAGTGGCTGGGGATTAATAATGAGACTGAGGACCAGTACGCACT
 CATGGAGGACGAGGACGATCTCCCGCACACGAGGAACGCACTTGGTACGTGGGCAAGATCAACCGCACG
 CAGGCAGAGGAGATGCTGAGTGGCAAGCGGGATGGCACCTTCTCATCCGCGAGAGCAGCCAGCGGGCT
 GCTACGCTGCTCCGTGGTAGTGGACGGCGACCAAGCACTGCGTATCTACCGCACGGCCACCGGCTT
 CGGCTTCGCGGAGCCCTACAACCTGTACGGTCTGCTGAAGGAGCTGGTGTGCTGACTACCAGCACGCCTCG
 CTGGTGCAGCACAACGACGCGCTACCGTACCGTGGCGACCCAGTGGCGCCCCGGGCCCGGCCCGC
 CGCTGCCGCCGC

ACGCGTACGCGGCCGCTCGAG - GFP Tag - GTTTAA

Protein Sequence: >RG209834 representing NM_005027
 Red=Cloning site Green=Tags(s)

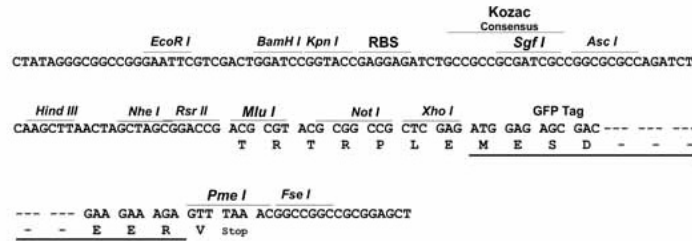
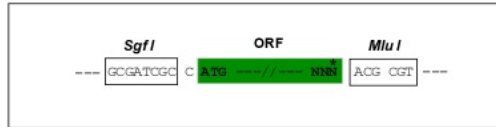
MAGPEGFQYRAL YPFRRERPEDELELLPGDVLVVSRAALQALGVAEGGERCPQSVGWMPGLNERTRQRGDF
 PGTYVEFLGPVALARPGPRPRGPRPLPARPRDGAPEPGLTLPDLPEQFSPPDVAPLLVKLVEAIERTGL
 DSESHYRPELPAPRTDWSLSDVDQWDTAALADGIKSFLALPAPLVTPEASAEARRALREAGPVGPALE
 PPTLPLHRALTLRFLQLHLGRVARRAPALGPAVRALGATFGPLLRAPPPSPPPGGAPDGPSPDFP
 ALLVLEKLLQEHLEEQEVAPPALPPKPPKAKPAPTVLANGGSPSLQDAEWYWDIISREEVNEKLRDTPDG
 TFLVRDASSKIQGEYTLTLRKGGNNKLIKVFHRDGHYGFSEPLTFCSVVDLINHYRHESLAQYNAKLDTR
 LLYPVSKYQQDQIVKEDSVEAVGAQLKVYHQYQDKSREYDQLYEYTRTSQELQMKRTAIEAFNETIKI
 FEEQGQTQEKCSKEYLERFRREGNEKEMQRILLNSERLKSRIAEIHESRTKLEQLRAQASDNREIDKRM
 NSLKPDLMLRKRIRDQYLVLWLTQKGARQKINEWLGIKNETEDQYALMEDEDDLPHHEERTWYVVGKINRT
 QAEEMLSGKRDGTFLIRESSQRGCYACSVVVDGDTKHCVIYRTATGFGFAEPYNYGSLKELVLHYQHAS
 LVQHNDALTVTLAHPVRAPGPGPPPAAR

TRTRPLE - GFP Tag - V

Restriction Sites: SgfI-MluI

Cloning Scheme:

Cloning sites used for ORF Shuttling:



ACCN: NM_005027

ORF Size: 2184 bp

OTI Disclaimer: Due to the inherent nature of this plasmid, standard methods to replicate additional amounts of DNA in E. coli are highly likely to result in mutations and/or rearrangements. Therefore, OriGene does not guarantee the capability to replicate this plasmid DNA. Additional amounts of DNA can be purchased from OriGene with batch-specific, full-sequence verification at a reduced cost. Please contact our customer care team at custsupport@origene.com or by calling 301.340.3188 option 3 for pricing and delivery.

The molecular sequence of this clone aligns with the gene accession number as a point of reference only. However, individual transcript sequences of the same gene can differ through naturally occurring variations (e.g. polymorphisms), each with its own valid existence. This clone is substantially in agreement with the reference, but a complete review of all prevailing variants is recommended prior to use. [More info](#)

OTI Annotation: This clone was engineered to express the complete ORF with an expression tag. Expression varies depending on the nature of the gene.

Components: The ORF clone is ion-exchange column purified and shipped in a 2D barcoded Matrix tube containing 10ug of transfection-ready, dried plasmid DNA (reconstitute with 100 ul of water).

Reconstitution Method:

1. Centrifuge at 5,000xg for 5min.
2. Carefully open the tube and add 100ul of sterile water to dissolve the DNA.
3. Close the tube and incubate for 10 minutes at room temperature.
4. Briefly vortex the tube and then do a quick spin (less than 5000xg) to concentrate the liquid at the bottom.
5. Store the suspended plasmid at -20°C. The DNA is stable for at least one year from date of shipping when stored at -20°C.

RefSeq: [NM_005027.3](#)

RefSeq Size: 3953 bp

RefSeq ORF: 2187 bp

Locus ID: 5296

UniProt ID: [O00459](#)

Cytogenetics: 19p13.11

Domains: RhoGAP, SH2, SH3

Protein Families: Druggable Genome

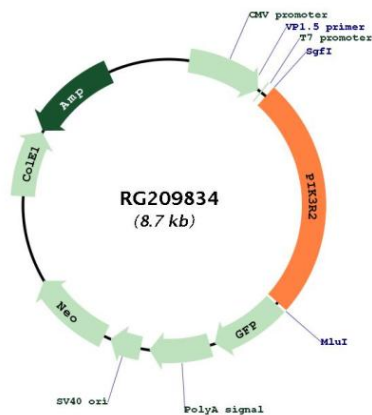
Protein Pathways:

Acute myeloid leukemia, Apoptosis, B cell receptor signaling pathway, Chemokine signaling pathway, Chronic myeloid leukemia, Colorectal cancer, Endometrial cancer, ErbB signaling pathway, Fc epsilon RI signaling pathway, Fc gamma R-mediated phagocytosis, Focal adhesion, Glioma, Insulin signaling pathway, Jak-STAT signaling pathway, Leukocyte transendothelial migration, Melanoma, mTOR signaling pathway, Natural killer cell mediated cytotoxicity, Neurotrophin signaling pathway, Non-small cell lung cancer, Pancreatic cancer, Pathways in cancer, Phosphatidylinositol signaling system, Progesterone-mediated oocyte maturation, Prostate cancer, Regulation of actin cytoskeleton, Renal cell carcinoma, Small cell lung cancer, T cell receptor signaling pathway, Toll-like receptor signaling pathway, Type II diabetes mellitus, VEGF signaling pathway

Gene Summary:

Phosphatidylinositol 3-kinase (PI3K) is a lipid kinase that phosphorylates phosphatidylinositol and similar compounds, creating second messengers important in growth signaling pathways. PI3K functions as a heterodimer of a regulatory and a catalytic subunit. The protein encoded by this gene is a regulatory component of PI3K. Three transcript variants, one protein coding and the other two non-protein coding, have been found for this gene. [provided by RefSeq, Apr 2019]

Product images:



Circular map for RG209834