

Product datasheet for **RG209831**

LRRC32 (NM_005512) Human Tagged ORF Clone

Product data:

Product Type:	Expression Plasmids
Product Name:	LRRC32 (NM_005512) Human Tagged ORF Clone
Tag:	TurboGFP
Symbol:	LRRC32
Synonyms:	CPPRDD; D11S833E; GARP
Mammalian Cell Selection:	Neomycin
Vector:	pCMV6-AC-GFP (PS100010)
E. coli Selection:	Ampicillin (100 ug/mL)



[View online »](#)

**ORF Nucleotide
Sequence:**

>RG209831 representing NM_005512
 Red=Cloning site Blue=ORF Green=Tags(s)

TTTTGTAATACGACTCACTATAGGGCGGCCGGAATTCGTCGACTGGATCCGGTACCGAGGAGATCTGCC
 GCC**CGGATCGCC**

ATGAGACCCAGATCCTGCTGCTCCTGGCCTGCTGACCTAGGCCTGGTGCACAACACCAAGACAAAG
 TGCCTGTAAAGATGGTGGACAAGAAGGTCTCGTGCCAGGTTCTGGCCTGCTCCAGGTCCCCTCGGTGCT
 CCCGCCAGACACTGAGACCCCTTGATCTATCTGGGAACCAGCTGCGGAGTATCCTGGCCTCACCCCTGGG
 TTCTACACGGCACTTCGTCACCTGGACCTGAGCACCAATGAGATCAGCTTCTCCAGCCAGGAGCCTTCC
 AGGCCCTGACCCACCTGGAGCACCTCAGCCTGGCTCACAACCGGCTGGCGATGGCCACTGCGCTGAGTGC
 TGGTGGCTGGGCCCCCTGCCACGCGTGACCTCCCTGGACCTGTCTGGGAACAGCCTGTACAGCGGCCTG
 CTGGAGCGGTGCTGGGGAGGCCACCCAGCCTGCATACCCTCTCACTGGCGGAGAACAGTCTGACTCGCC
 TCACCCGCCACACCTTCCGGGACATGCCTGCGCTGGAGCAGCTTGACCTGCATAGCAACGTGCTGATGGA
 CATCGAGGATGGGCGCTTCGAGGCTGTCGCCCGCCTGACCATCTCAACCTCTCCAGGAATTCCTCACC
 TGATCTCCGACTTCAGCCTCCAGCAGCTGCGGGTGTAGACCTGAGCTGCAACAGCATCGAGGCCCTTC
 AGACGGCCTCCCAGCCCAGGCTGAGTTCAGCTCACCTGGCTTGACCTGCGGGAGAACAACTGTCCCA
 TTTCCCGACCTGGCCGCGCTCCCGAGACTCATCTACCTGAACCTGTCCAACAACCTCATCCGGCTCCCC
 ACAGGGCCACCCAGGACAGCAAGGGCATCCACGCACCTTCCGAGGGCTGGTCAGCCCTGCCCTCTCAG
 CCCCCAGCGGGAATGCCAGCGGCCGCCCTTTCCAGCTCTTGAATCTGGATTTGAGCTACAATGAGAT
 TGAGCTCATCCCCGACAGCTTTCTTGAGCACCTGACCTCCCTGTGCTTCTGAACCTCAGCAGAACTGC
 CCCTGGAGACACTGGAACCTGGCGCCAGAGCCCTGGGGTCTCTGCGGACGCTGCTCCTACAGGGCAATGC
 CCTGCGGGACCTGCCCCATACACCTTTGCCAATCTGGCCAGCCTGCAGCGGCTCAACCTGCAGGGGAAC
 CGAGTCAGCCCCGTGGGGGGCCAGATGAGCCTGGCCCCCTCCGGCTGTGTGGCCTTCTCCGGCATCACCT
 CCCTCCGACGCTGAGCCTGGTGGATAATGAGATAGAGCTGCTCAGGGCAGGGGCCTTCTCCACACCCC
 ACTGACTGAGCTGGACCTTTCTTCCAATCCTGGCTGGAGGTGGCCACGGGGGCTTGGGAGGCCTGGAG
 GCCTCCTTGAGGTCCTGGCACTGCAGGGCAACGGGCTGATGGTCTGCAGGTGGACCTGCCCTGCTTCA
 TCTGCCTAAGCGGCTCAATCTTGCCGAGAACCCTGAGCCACCTTCCCGCTGGACACAGGCTGTGTC
 ACTGGAGGTGCTGGACCTGCGAAACAACAGCTTCAAGCCTCCTGCCAGGCAGTGCCATGGGTGGCCTGGAG
 ACCAGCCTCCGGCGCCTACTCTGCAGGGGAATCCACTCAGCTGCTGCGCAATGGCTGGCTGGCAGCCC
 AGCTGCACCAGGGCCGTGTGGACGTGGACGCCACCCAGGACCTGATCTGCCGCTTCACTCCAGGAGGA
 GGTGTCCCTGAGCCACGTGCGTCCCGAAGACTGTGAGAAGGGGGGACTGAAGAACATCAACCTCATCATC
 ATCCTCACCTTACTACTGGTCTCTGCCATCCTCCTCACCACGCTGGCCGCTGCTGCTGCGTCCGCCGGC
 AGAAGTTAACCAACAGTATAAAGCC

AG**CGGACCG**ACGCGTACGCGGCCGCTCGAG - GFP Tag - GTTTAA

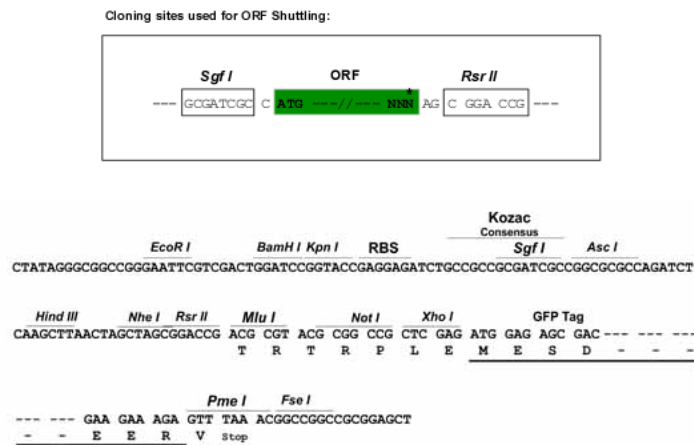
Protein Sequence: >RG209831 representing NM_005512
Red=Cloning site Green=Tags(s)

```
MRPQILLLLLALLTLGLAAQHQDKVPCKMVDKKVSCQVLLQVPSVLPDPTETLDLSGNQLRSILASPLG
FYTALRHLDLSTNEISFLQPGAFQALTHLEHLSLAHNRLAMATALSAGGLGPLRVTSLDLSDGNSLYSGL
LERLLGEAPSLHTLSLAENSLTRLTRHTFRDMPALEQLDLHSNVLMDIEDGAFEGLPRLTHLNSRNSLT
CISDFSLQQLRVLDLSCNSIEAFQTASQPQAEFQLTWLDLRENKLLHFPDLAALPRLIYLNLSNNLIRLP
TGPPQDSKGIHAPSEGWSALPLSAPSGNASGRPLSQLLNLDLSYNEIELIPDSFLEHLTSLCFLNLSRNC
LRTFEARRLGSLLPCLMLLDLSHNALETLELGARALGSLRTLLLQGNALRDLPPYTFANLASLQRLNLQGN
RVSPCGGPDEPGPSGCVAFSGITSLRSLVDNEIELLRAGAFHTPLTELDLSSNPGLEVATGALGGLE
ASLEVLALQGNLMVLQVDLPCFICLKRLNLAENRSLHLPWTQAVSLEVLDRNNSFLLPGSAMGGLE
TSLRRLYLQGNPLSCCGNWLAAQLHQGRVDVDTQDLICRFSSQEEVSLSHVRPEDCEKGLKNINLII
ILTFILVSAILLTTLAACCCVRRQKFNQYKA
```

SGPTRRRLE - GFP Tag - V

Restriction Sites: SgfI-RsrII

Cloning Scheme:



ACCN: NM_005512

ORF Size: 1986 bp

OTI Disclaimer: Due to the inherent nature of this plasmid, standard methods to replicate additional amounts of DNA in E. coli are highly likely to result in mutations and/or rearrangements. Therefore, OriGene does not guarantee the capability to replicate this plasmid DNA. Additional amounts of DNA can be purchased from OriGene with batch-specific, full-sequence verification at a reduced cost. Please contact our customer care team at custsupport@origene.com or by calling 301.340.3188 option 3 for pricing and delivery.

The molecular sequence of this clone aligns with the gene accession number as a point of reference only. However, individual transcript sequences of the same gene can differ through naturally occurring variations (e.g. polymorphisms), each with its own valid existence. This clone is substantially in agreement with the reference, but a complete review of all prevailing variants is recommended prior to use. [More info](#)

OTI Annotation: This clone was engineered to express the complete ORF with an expression tag. Expression varies depending on the nature of the gene.

Components: The ORF clone is ion-exchange column purified and shipped in a 2D barcoded Matrix tube containing 10ug of transfection-ready, dried plasmid DNA (reconstitute with 100 ul of water).

Reconstitution Method:

1. Centrifuge at 5,000xg for 5min.
2. Carefully open the tube and add 100ul of sterile water to dissolve the DNA.
3. Close the tube and incubate for 10 minutes at room temperature.
4. Briefly vortex the tube and then do a quick spin (less than 5000xg) to concentrate the liquid at the bottom.
5. Store the suspended plasmid at -20°C. The DNA is stable for at least one year from date of shipping when stored at -20°C.

RefSeq: [NM_005512.1](#), [NP_005503.1](#)

RefSeq Size: 4163 bp

RefSeq ORF: 1989 bp

Locus ID: 2615

UniProt ID: [Q14392](#)

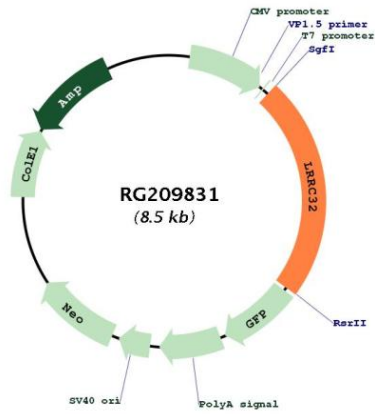
Cytogenetics: 11q13.5

Domains: LRRNT, LRR, LRR_RI, LRR_TYP, LRR_PS

Protein Families: Transmembrane

Gene Summary: This gene encodes a type I membrane protein which contains 20 leucine-rich repeats. Alterations in the chromosomal region 11q13-11q14 are involved in several pathologies. [provided by RefSeq, Jul 2008]

Product images:



Circular map for RG209831