

## Product datasheet for **RG209828**

### SLC6A8 (NM\_005629) Human Tagged ORF Clone

#### Product data:

Product Type:	Expression Plasmids
Product Name:	SLC6A8 (NM_005629) Human Tagged ORF Clone
Tag:	TurboGFP
Symbol:	SLC6A8
Synonyms:	CCDS1; CRT; CRTR; CT1; CTR5
Mammalian Cell Selection:	Neomycin
Vector:	pCMV6-AC-GFP (PS100010)
E. coli Selection:	Ampicillin (100 ug/mL)



[View online »](#)

**ORF Nucleotide Sequence:**

>RG209828 representing NM\_005629  
 Red=Cloning site Blue=ORF Green=Tags(s)

TTTTGTAATACGACTCACTATAGGGCGGCCGGAATTCGTCGACTGGATCCGGTACCGAGGAGATCTGCC  
 GCC**CGCATCGCC**

ATGGCGAAGAAGAGCGCCGAGAACGGCATCTATAGCGTGTCCGGCAGCAGAGAAGAAGGGCCCCCTCATCG  
 CGCCCGGGCCCGACGGGGCCCGGCCAAGGGCGACGGCCCGTGGGCCTGGGGACACCCGGCGGCCGCT  
 GGCCGTGCCGCCGCGGAGACCTGGACGCGCCAGATGGACTTCATCATGTCGTGCGTGGGCTTCGCCGTG  
 GGCTTGGGCAACGTGTGGCGCTTCCCTACCTGTGCTACAAGAACGGCGGAGGTGTGTTCTTATCCCT  
 ACGTCCTGATCGCCCTGGTTGGAGGAATCCCCATTTTCTTCTTAGAGATCTCGCTGGGCCAGTTCATGAA  
 GGCCGGCAGCATCAATGTCTGGAACATCTGTCCCTGTTCAAAGGCTGGGCTACGCCTCCATGGTGATC  
 GTCTTCTACTGCAACACCTACTACATCATGGTGTGGCCTGGGGCTTCTATTACCTGGTCAAGTCTTTA  
 CCACCACGCTGCCCTGGCCACATGTGGCCACACTTGAACACTCCGACTGCGTGGAGATCTTCGCCCA  
 TGAAGACTGTGCAATGCCAGCCTGGCCAACTCACCTGTGACCAGCTTGTGACCGCCGGTCCCCTGTC  
 ATCGAGTTCTGGGAGAACAAGTCTTGGGCTGTCTGGGGGACTGGAGGTGCCAGGGGCCCTCAACTGGG  
 AGGTGACCCTTTGTCTGCTGGCCTGCTGGGTGCTGGTCTACTTCTGTGTCTGGAAGGGGGTCAAATCCAC  
 GGGAAAGATCGTGTACTTCACTGCTACATTTCCCTACGTGGTCTGGTCTGCTGCTGGTGGTGGAGTG  
 CTGCTGCTGGCGCCCTGGATGGCATATTTACTATCTCAAGCCTGACTGGTCAAAGCTGGGGTCCCCTC  
 AGGTGTGGATAGATGCGGGGACCCAGATTTTCTTTTCTTACGCCATTGGCCTGGGGGCCCTCACAGCCCT  
 GGGCAGCTACAACCGCTTCAACAACAACGTCTACAAGGACGCCATCATCTGGCTCTCATCAACAGTGGG  
 ACCAGCTTCTTTGCTGGCTTGTGGTCTTCTCCATCCTGGGCTTCATGGTGCAGAGCAGGGCGTGCACA  
 TCTCCAAGGTGGCAGAGTCAGGGCCGGGCTGGCCTTATCGCCTACCCGCGGGCTGTACGCTGATGCC  
 AGTGGCCCCACTCTGGGCTGCCCTGTTCTTCTCATGCTGTTGCTGCTTGGTCTCGACAGCCAGTTTGT  
 GGTGTGGAGGGCTTATCACCGCCTCCTCGACCTCCTCCGGCCTCCTACTACTTCCGTTTCAAAGGG  
 AGATCTCTGTGGCCCTCTGTTGTGCCCTGCTTTGTCATCGATCTCCTCATGGTACTGATGGCGGGAT  
 GTACGTCTCCAGCTGTTTGACTACTACTCGGCCAGCGGACCACCCTGCTGCTGGCAGGCCCTTTGGGAG  
 TGCGTGGTGGTGGCCTGGGTGTACGGAGCTGACCCTTTCATGGACGACATTGCCTGTATGATCGGGTACC  
 GACCTTGGCCCTGGATGAAATGGTGTGGTCTTCTTACCCCGTGGTGTGCATGGGCATCTTCATCTT  
 CAACGTTGTACTACGAGCCGCTGGTCTACAACAACACCTACGTGTACCCGTGGTGGGGTGGGCCATG  
 GGCTGGGCCTTCGCCCTGCTCCTCATGCTGTGCGTGGCCTGCACCTCCTGGGCTGCCTCCTCAGGGCCA  
 AGGGCACCATGGCTGAGCGCTGGCAGCCTGACCCAGCCATCTGGGGCTCCACCCTTGGAGTACCG  
 AGCTCAGGACGCAGATGTAGGGGCTGACCACCCTGACCCAGTGTCCGAGAGCAGCAAGTCTGTCGTG  
 GTGGAGAGTGCATG

**ACGCGT**ACGCGGGCCGCTCGAG – GFP Tag – GTTTAA

**Protein Sequence:**

>RG209828 representing NM\_005629  
 Red=Cloning site Green=Tags(s)

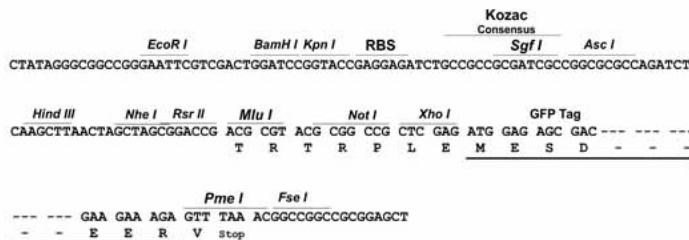
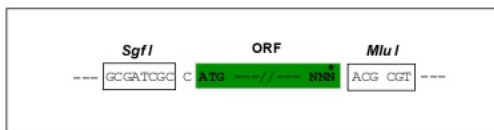
MAKXSAENGIYSVSGDEKKGPLIAPGPDGAPAKGDGPVGLGTPGGRLAVPPRETWTRQMDFIMSCVGFV  
 GLGNVWRFYLYCYKNGGVFLIPYVLIALVGGIPIFFLEISLQFMKAGSINVWNICPLFKGLGYASMI  
 VFYCNYYIMVLAWGFYLVKSFTTTTLPWATCGHTWNTPCVEIFRHEDCANASLANLTCQLADRRSPV  
 IEFWENKVLRLSGGLEVPALNWEVTLCLLACWLVYFCVWKGVKSTGKIVYFTATFPYVVLVLLVRGV  
 LLPGALDGIYIYLPDWSKLGSPQWIDAGTQIFFSYAIGLALGALGALSYNRFNNCYKDAIILALINS  
 TSFFAGFVYVILGFMAAEQGVHISKVAESGPGAFIAYPRAVTLMPVAPLWAALFFMMLLLGLDSQFV  
 GVEGFITGLDLLRASYYFRQREISVALCCALCFVIDLSMVTGDMYVFLFDYYSASGTTLLWQAFWE  
 CVVVAWVYGADRFMDIACMIGYRCPWMKWCWSSFFPLVCMGIFIFNVVYVEPLVYNNYVYPWWGEAM  
 GWAFALSSMLCVPLHLLGCLLRAGKTMERWQHLTQPIWGLHHLEYRAQDADVRGLTTLTPVSESSKVVV  
 VESVM

**TRTRPLE** – GFP Tag – V

Restriction Sites: SgfI-MluI

Cloning Scheme:

Cloning sites used for ORF Shutting:



ACCN: NM\_005629

ORF Size: 1905 bp

OTI Disclaimer: The molecular sequence of this clone aligns with the gene accession number as a point of reference only. However, individual transcript sequences of the same gene can differ through naturally occurring variations (e.g. polymorphisms), each with its own valid existence. This clone is substantially in agreement with the reference, but a complete review of all prevailing variants is recommended prior to use. [More info](#)

OTI Annotation: This clone was engineered to express the complete ORF with an expression tag. Expression varies depending on the nature of the gene.

Components: The ORF clone is ion-exchange column purified and shipped in a 2D barcoded Matrix tube containing 10ug of transfection-ready, dried plasmid DNA (reconstitute with 100 ul of water).

Reconstitution Method:

1. Centrifuge at 5,000xg for 5min.
2. Carefully open the tube and add 100ul of sterile water to dissolve the DNA.
3. Close the tube and incubate for 10 minutes at room temperature.
4. Briefly vortex the tube and then do a quick spin (less than 5000xg) to concentrate the liquid at the bottom.
5. Store the suspended plasmid at -20°C. The DNA is stable for at least one year from date of shipping when stored at -20°C.

RefSeq: [NM\\_005629.1](#), [NP\\_005620.1](#)

RefSeq Size: 3917 bp

RefSeq ORF: 1908 bp

Locus ID: 6535

UniProt ID: [P48029](#)

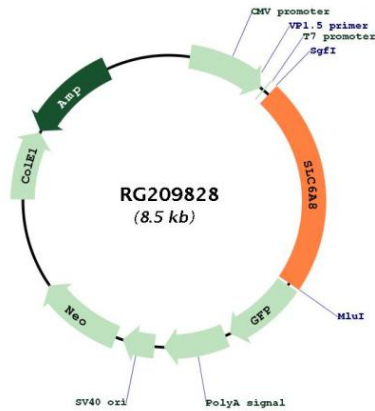
**Cytogenetics:** Xq28

**Domains:** SNF

**Protein Families:** Druggable Genome, Transmembrane

**Gene Summary:** The protein encoded by this gene is a plasma membrane protein whose function is to transport creatine into and out of cells. Defects in this gene can result in X-linked creatine deficiency syndrome. Multiple transcript variants encoding different isoforms have been found for this gene. [provided by RefSeq, Dec 2008]

**Product images:**



Circular map for RG209828