

Product datasheet for **RG209826**

LRRN5 (LRRN2) (NM_006338) Human Tagged ORF Clone

Product data:

Product Type:	Expression Plasmids
Product Name:	LRRN5 (LRRN2) (NM_006338) Human Tagged ORF Clone
Tag:	TurboGFP
Symbol:	LRRN2
Synonyms:	FIGLER7; GAC1; LRANK1; LRRN5
Mammalian Cell Selection:	Neomycin
Vector:	pCMV6-AC-GFP (PS100010)
E. coli Selection:	Ampicillin (100 ug/mL)



[View online »](#)

**ORF Nucleotide
Sequence:**

>RG209826 representing NM_006338
 Red=Cloning site Blue=ORF Green=Tags(s)

TTTTGTAATACGACTCACTATAGGGCGGCCGGGAATTCGTCGACTGGATCCGGTACCGAGGAGATCTGCC
 GCC**CGGATCGCC**

ATGAGGCTTCTCGTGGCCCCACTTTGCTAGCTTGGGTGGCTGGTGCCACTGCCGCTGTGCCGTGGTAC
 CCTGGCATGTTCCCTGCCCCCTCAGTGTGCCTGCCAGATCCGGCCCTGGTATACGCCCCGCTCGTCCTA
 CCGCGAGGCTACCACTGTGGACTGCAATGACCTATTCTGACGGCAGTCCCCCGGCACTCCCCGCAGGC
 ACACAGACCCTGCTCCTGCAGAGCAACAGCATTGTCCGTGTGGACCAGAGTGAGCTGGGCTACCTGGCCA
 ATCTCACAGAGCTGGACCTGTCCAGAACAGCTTTTCGGATGCCCGAGACTGTGATTTCCATGCCCTGCC
 CCAGCTGCTGAGCCTGCACCTAGAGGAGAACCAGCTGACCCGGCTGGAGGACCACAGCTTTGCGAGGGCTG
 GCCAGCCTACAGGAACCTATCTCAACCACAACCAGCTTACCGCATCGCCCCAGGGCCTTTTCTGGCC
 TCAGCAACTTGTGCGGCTGCACCTCAACTCCAACCTCCTGAGGGCCATTGACAGCCGCTGGTTTGAAT
 GCTGCCAACTTGGAGATACTCATGATTGGCGGCAACAAGGTAGATGCCATCCTGGACATGAACTCCGG
 CCCTGGCCAACCTGCGTAGCCTGGTGTAGCAGGCATGAACCTGCGGGGAGATCTCCGACTATGCCCTGG
 AGGGGCTGCAAAGCCTGGAGAGCCTCTCCTTCTATGACAACCAGCTGGCCCGGGTGGCCAGGCGGGCACT
 GGAACAGGTGCCCGGGCTCAAGTTCCTAGACCTCAACAAGAACCCTCCAGCGGGTAGGGCCGGGGGAC
 TTTGCCAATGCTGCACCTTAAGGAGCTGGGACTGAACAATGAGGAGCTGGTCTCCATCGACAAGT
 TTGCCCTGGTGAACCTCCCCGAGCTGACCAAGCTGGACATCACCATAAACCACGGCTGTCTTCATCCA
 CCCCCGCGCTTCCACCCTGCCCCAGATGGAGACCCTCATGCTCAACAACAACGCTCTCAGTGCCTTG
 CACCAGCAGACGGCGGAGTCCCTGCCAACCTGCAGGAGGTAGGTCTCCACGGCAACCCCATCCGCTGTG
 ACTGTGCATCCGCTGGGCAATGCCACGGGCACCCGTGCCGTTTCATCGAGCCGAATCCACCCTGTG
 TCGGAGCCTCCGGACCTCCAGCGCTCCCGGTCCGTTGAGGTGCCCTTCCGGGAGATGACGGACCACTGT
 TTGCCCTCATCTCCCCACGAAGCTTCCCCCAAGCCTCCAGGTAGCCAGTGGAGAGAGCATGGTGTGC
 ATTGCCGGCACTGGCCGAACCCGAACCCGAGATCTACTGGTCACTCCAGCTGGGCTTCGACTGACACC
 TGCCCATGCAGGCAGGAGGTACCGGGTGTACCCCGAGGGGACCCTGGAGCTGCGGAGGGTACAGCAGAA
 GAGGCGGGGCTATACACCTGTGTGGCCAGAACCTGGTGGGGCTGACACTAAGACGGTTAGTGTGGTTG
 TGGCCGTGCTCTCCTCCAGCCAGGCAGGGACGAAGGACAGGGGCTGGAGCTCCGGGTGCAGGAGACCCA
 CCCCTATCACATCTGTATCTTGGTCACCCCACCAACACAGTGTCCACCAACCTCACCTGGTCCAGT
 GCCTCCTCCCTCCGGGGCAGGGGGCCACAGCTCTGGCCCGCTGCCTCGGGGAACCCACAGCTACAACA
 TTACCCGCTCCTCAGGCCACGGAGTACTGGGCTGCCTGCAAGTGGCCTTTGCTGATGCCACACCCA
 GTTGGCTTGTGTATGGCCAGGACCAAAGAGGCCACTTCTTGCCACAGAGCCTTAGGGGACCGTCTGGG
 CTCATTGCCATCCTGGCTCTCGCTGTCTTCTCCTGGCAGCTGGGCTAGCGGCCACCTTGGCACAGGCC
 AACCCAGGAAGGGTGTGGGTGGGAGGCGGCTCTCCCTCCAGCCTGGGCTTTCTGGGGCTGGAGTCCCC
 TTCTGTCCGGTGTGTCTGCTCCCTCGTCTGCCCTGGAATCCAGGGAGGAAGCTGCCAGATCCTCA
 GAAGGGGAGACTGTTGCCACCATTGTCTAAAATTCT

ACGCGTACGCGGCCGCTCGAG - GFP Tag - GTTTAA

Protein Sequence: >RG209826 representing NM_006338
 Red=Cloning site Green=Tags(s)

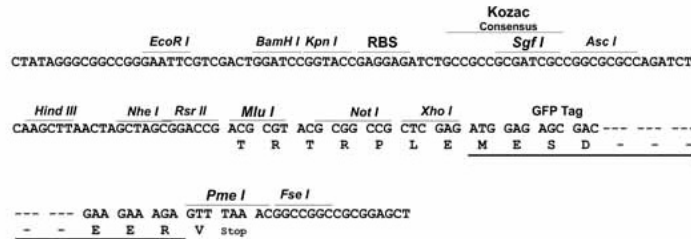
MRLLVAPLLLAWVAGATAAVPVVPHVPCPPQCACQIRPWYTPRSSYREATTVDCNDLFLTAVPPALPAG
 TQTLQLQSNISIVRVDQSELGYLANL TELDL SQNSFSDARDCDFHALPQLLSLHLEENQL TRLEDHSFAGL
 ASLQEL YLNHNQLYRIAPRAFSGLSNLLRLHLNSNLLRAIDSRWFEMLPNLEILMIGGNKVDAILD MNFR
 PLANLRSLVLAGMNLREISDYALEGLQSLESLSFYDNQLARVPRRALEQVPGLKFLDLNKNPLQRVGP GD
 FANMLHLKELGLNNMEELV SIDKFALVNLPELTKLDITNNPRLSF IHPRAFHHL PQMETLMLNNNALSAL
 HQQTAESLPNLQEVLHGNI RCDCVIRWANATGTRVRFIEPQSTLCAEPPDLQRLPVREVPFREM TDHC
 LPLISPRSFPPSLQV ASGESMVLHCRALAEPEPEIYWVTPAGLRLTPAHAGRRYRVYPEGTLELRRVTAE
 EAGLYTCVAQN LVGADTKTVSVVGRALLQPGRDEGQGLELRVQETHPHYILLSWVTPPNTVSTNL TWSS
 ASSLRGQGATALARLPRGTHSYNITRLLQATEYWACLQVAFADAHTQLACVWARTKEATSCHRALGDRPG
 LIATILAVLLLLAAGLAHLGTGQPRKGVGRRPLPPAWAFWGWSPPSVRVVSAPLVLPWNPGRKLPRSS
 EGETLLPPLSQNS

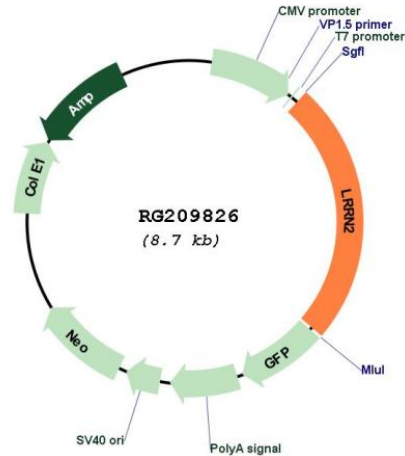
TRTRPLE - GFP Tag - V

Restriction Sites: SgfI-MluI

Cloning Scheme:

Cloning sites used for ORF Shutting:



Plasmid Map:


ACCN: NM_006338

ORF Size: 2139 bp

OTI Disclaimer: The molecular sequence of this clone aligns with the gene accession number as a point of reference only. However, individual transcript sequences of the same gene can differ through naturally occurring variations (e.g. polymorphisms), each with its own valid existence. This clone is substantially in agreement with the reference, but a complete review of all prevailing variants is recommended prior to use. [More info](#)

OTI Annotation: This clone was engineered to express the complete ORF with an expression tag. Expression varies depending on the nature of the gene.

Components: The ORF clone is ion-exchange column purified and shipped in a 2D barcoded Matrix tube containing 10ug of transfection-ready, dried plasmid DNA (reconstitute with 100 ul of water).

Reconstitution Method:

1. Centrifuge at 5,000xg for 5min.
2. Carefully open the tube and add 100ul of sterile water to dissolve the DNA.
3. Close the tube and incubate for 10 minutes at room temperature.
4. Briefly vortex the tube and then do a quick spin (less than 5000xg) to concentrate the liquid at the bottom.
5. Store the suspended plasmid at -20°C. The DNA is stable for at least one year from date of shipping when stored at -20°C.

RefSeq: [NM_006338.2](#), [NP_006329.2](#)

RefSeq Size: 3227 bp

RefSeq ORF: 2142 bp

Locus ID:	10446
UniProt ID:	O75325
Cytogenetics:	1q32.1
Domains:	LRRNT, LRRCT, LRR, ig, LRR_TYP, IGc2, IG, LRR_SD22, LRR_PS
Protein Families:	Druggable Genome, Transmembrane
Gene Summary:	<p>The protein encoded by this gene belongs to the leucine-rich repeat superfamily. This gene was found to be amplified and overexpressed in malignant gliomas. The encoded protein has homology with other proteins that function as cell-adhesion molecules or as signal transduction receptors and is a candidate for the target gene in the 1q32.1 amplicon in malignant gliomas. Two alternatively spliced transcript variants encoding the same protein have been described for this gene. [provided by RefSeq, Jul 2008]</p>