

Product datasheet for **RG209818**

MSC (NM_005098) Human Tagged ORF Clone

Product data:

Product Type: Expression Plasmids
Product Name: MSC (NM_005098) Human Tagged ORF Clone
Tag: TurboGFP
Symbol: MSC
Synonyms: ABF-1; ABF1; bHLHa22; MYOR
Mammalian Cell Selection: Neomycin
Vector: pCMV6-AC-GFP (PS100010)
E. coli Selection: Ampicillin (100 ug/mL)
ORF Nucleotide Sequence: >RG209818 representing NM_005098
 Red=Cloning site Blue=ORF Green=Tags(s)

TTTTGTAATACGACTCACTATAGGGCGGCCGGAATTCGTCGACTGGATCCGGTACCGAGGAGATCTGCC
 GCC**CGATCGCC**

ATGTCCACGGGCTCGGTGAGTGATCCGGAGGAGATGGAGCTTCGGGGGCTGCAGCGGGAGTACCCGGTCC
 CCGCCTCCAAGAGGCCGCCCTCCGCGCGTAGAGCGCAGCTACGCCTCGCCAGTGACAACCTCGTCGGC
 AGAGGAGGAGGACCCCGACGGCGAGGAGGAGCGCTGCGCTCTGGGCACAGCCGGCAGCGCGGAAGGCTGC
 AAGAGGAAGCGGCCCGTGTGGCTGGGGCGCGCGCAGGTGGTAGCGGGCGGTGGTGGCAAGAAGC
 CCTCCCAGCAAGGGCTCAGCCGAGAGTGCAAGCAGTCGACGGGAACGCGGCAACGCCCGTGAGCG
 TGCCCGATGCGCGTGTGAGCAAAGCCTTCTCCAGGCTCAAGACCAGCCTGCCCTGGGTGCCCCCGAC
 ACTAAGCTCTCAAGCTGGACACGCTCCGGCTGGCTTCCAGTTACATCGCTCACCTGCGGACGCTGTTGC
 AGGAGGACCGCTATGAGAACGGCTACGTGCACCCAGTGAACCTGACATGGCCATTCGTGGTCTCGGGGAA
 ACCGGACTCTGACACCAAGAAGTTTCCGAGCCAACAGACTATGTGGAACCACCGCT

AG**CGGACCG**ACGCGTACGCGGCCGCTCGAG - GFP Tag - GTTTAA

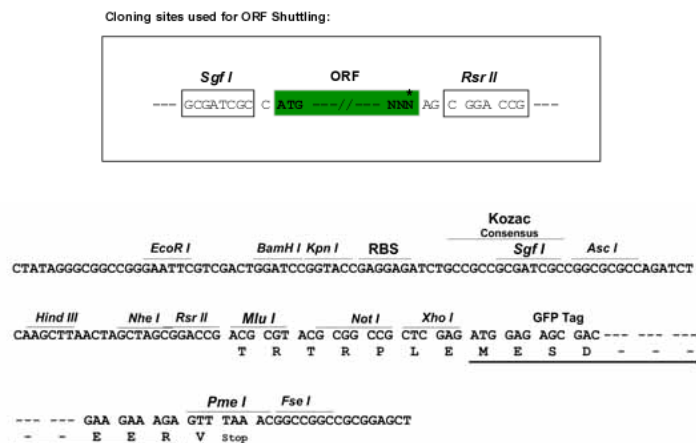
Protein Sequence: >RG209818 representing NM_005098
 Red=Cloning site Green=Tags(s)

MSTGSVSDPEEMELRGLQREYPVPASKRPPLRGVERSYASPSDNSSAEEDPDGEEERCALGTAGSAEGC
 KRKRPRVAGGGGAGGSAGGGGKKPLPAKGSAAECKQSRNAANARERARMRVLKAFSRLKTSLPWVPPD
 TKLSKLDLRLASSYIAHLRQLLQEDRYENGYVHPVNL TWPFFVSGRPDSDTKEVSAANRLCGTTA

SGP**TRRRLE** - GFP Tag - V

Restriction Sites: Sgfl-RsrII



Cloning Scheme:


ACCN: NM_005098

ORF Size: 618 bp

OTI Disclaimer: The molecular sequence of this clone aligns with the gene accession number as a point of reference only. However, individual transcript sequences of the same gene can differ through naturally occurring variations (e.g. polymorphisms), each with its own valid existence. This clone is substantially in agreement with the reference, but a complete review of all prevailing variants is recommended prior to use. [More info](#)

OTI Annotation: This clone was engineered to express the complete ORF with an expression tag. Expression varies depending on the nature of the gene.

Components: The ORF clone is ion-exchange column purified and shipped in a 2D barcoded Matrix tube containing 10ug of transfection-ready, dried plasmid DNA (reconstitute with 100 ul of water).

Reconstitution Method:

1. Centrifuge at 5,000xg for 5min.
2. Carefully open the tube and add 100ul of sterile water to dissolve the DNA.
3. Close the tube and incubate for 10 minutes at room temperature.
4. Briefly vortex the tube and then do a quick spin (less than 5000xg) to concentrate the liquid at the bottom.
5. Store the suspended plasmid at -20°C. The DNA is stable for at least one year from date of shipping when stored at -20°C.

RefSeq: [NM_005098.3](#), [NP_005089.2](#)

RefSeq Size: 2075 bp

RefSeq ORF: 621 bp

Locus ID: 9242

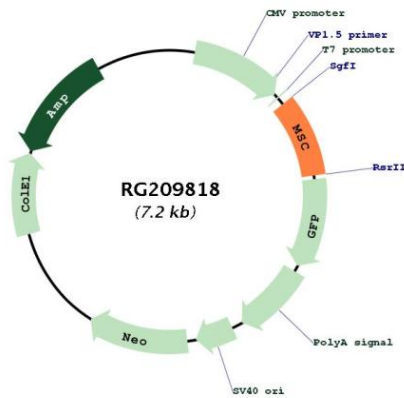
UniProt ID: [O60682](#)

Cytogenetics: 8q13.3

Protein Families: Druggable Genome, Transcription Factors

Gene Summary: The protein encoded by this gene is a transcriptional repressor capable of binding an E-box element either as a homodimer or as a heterodimer with E2A in vitro. The encoded protein also forms heterodimers with E2A proteins in vivo. This protein is capable of inhibiting the transactivation capability of E47, an E2A protein, in mammalian cells. This gene is a downstream target of the B-cell receptor signal transduction pathway. [provided by RefSeq, Jul 2008]

Product images:



Circular map for RG209818