

Product datasheet for **RG209813**

ADNP homeobox protein 2 (ADNP2) (NM_014913) Human Tagged ORF Clone

Product data:

Product Type:	Expression Plasmids
Product Name:	ADNP homeobox protein 2 (ADNP2) (NM_014913) Human Tagged ORF Clone
Tag:	TurboGFP
Symbol:	ADNP homeobox protein 2
Synonyms:	ZNF508
Mammalian Cell Selection:	Neomycin
Vector:	pCMV6-AC-GFP (PS100010)
E. coli Selection:	Ampicillin (100 ug/mL)
ORF Nucleotide Sequence:	>RG209813 representing NM_014913 Red=Cloning site Blue=ORF Green=Tags(s)

TTTTGTAATACGACTCACTATAGGGCGGCCGGAATTCGTCGACTGGATCCGGTACCGAGGAGATCTGCC
GCC**CGATCGCC**

ATGTTTCAAATTCCTGTGGAAAATCTTGACAACATCAGAAAGGTGCGAAAAAAGGTGAAAGGTATTCTTG
TGGATATTGGGCTTGACAGCTGCAAGGAGTTACTGAAGGACCTTAAAGGCTTTGATCCAGGAGAGAAATA
CTTTCATAACACATCATGGGAGATGTTTCTCTGGAACCTTCTGGAAAGAAAGTGAGATATCGAACA
AAGCCACTACTGTTGTGGCCTCTGTAATACTCTACAAAGGTGCTTACTTCATTCAAGAATCATTTACATC
GTTACCATGAAGATGAAATTGACCAAGAGCTGGTGATCCCTTGCCAAACTGTGTATTTGCATCTCAGCC
CAAAGTTGTGGGAAGGCACTTCAGAATGTTCCATGCGCCTGTCCGAAAGTCCAGAACTACACAGTGAAT
ATTTTAGGTGAAACTAAATCATCTAGGAGCGATGTGATAAGTTTACATGTCTAAAATGTAACCTTTTCAA
ACACTTTGTAACAGCATGAAGAAGCATGTGCTGGTAGCCATTTTCACTACTTAATTAACCTCCTACTT
TGGCCTAAGAAGTGAAGAAATGGGTGAGCAACCGAAAATAACGATACTGTTTCTATAGAGAAGATCCCA
CCACCTGACAAATATTACTGTAAAAAGTGAACGCCAATGCCAGCAGCCAGGATGCGTTAATGTATCACA
TTTTGACATCAGACATACACAGAGATTTGGAGAATAAGCTTAGATCTGTGATTTTCAAGACATATTAAGAG
GACTGGACTCTTGAAGCAAACGCACATTGCTCCAAAACCAGCAGCACATTTGGCTGCACCAGCAAATGCC
AGTGCTCCAAGCGCTCCAGCGCAGCCTCCTTGCTTCCATCTTGGCTTGGCCACAGAACAGTCCAAGCCCAG
CCGACAGGACAGCCAGTGACTGTGGCCAGGGTGCCCTGGAAGCCTCACTCATTCCCCCTGTCTGCTGG
CCAATCCACATGACTCTGGTCTCCAGCCCTCTGCCTGTGGGCCAGAACAGCCTCACCTGCAGCCCCCA
GCACCTCAGCCCCTTTTCTTTCTCACGGGGTTCCACTTCATCAGTCTGTGAATCCTCCTGTGTTGCCCT
TGAGTCAGCCAGTCGGACCTGTCAATAAGTCTGTTGGAAGTGTCTCCTCCCATAAATCAGACTGTTTCG
CCCTGGGGTTTTACCCCTCACCCAGCCTGTGGACCCATAAACAGACCTGTTGGGCTGGTGTCTTCTCT
GTGAGCCCCTCTGCACCCCTGGGGTCTCGAGGCTGTCTCGCCAGGGGTGCTTCTGTGAGTCGGGCGG
TCCCGTCTGGAGTCTTCTGCAGGCCAGATGACTCCTGCAGGCCAGATGACTCCTGCAGGGGTTATCCC
TGGCAACAGCAACTTCTGGGGTCTTCTACTGGCCAGATGGTCCAGTCAGGAGTTCTCCTGTGGG



[View online »](#)

CAGACAGCTCCGTCACGGGTTCTTCCCCAGGCCAGACAGCCCCATTGAGGGTTATCTCTGCAGGCCAGG
 TGGTCCCCTGCTGGGCTTCTTTCTCCAACCAGACAGTCTCCTCCTCAGCTGTTGTGCCTGTAACCAGGG
 TGTGAATTCTGGTGTCTGCAGCTTAGTCAGCCTGTTGTGTGGGAGTCTTCTCTGTGGGCCAGCCAGT
 AGGCCTGGGGTCTTGCAACTCAACCAGACTGTGGGCACCAACATTCTGCCTGTGAATCAGCCAGTGAGAC
 CTGGTGTCTCGCAGAACCACCTTCTGACATCAGGCTCTATTCTCAGACAGCTCATCCCTACAGGGAA
 ACAAGTGAATGGGATCCAACCTACACGCTGGCCCCGTGTCTGTCACTCTGCCGGTCCCCTGGAGGC
 CTTGCAACTGTGCTCCGCCAGATGCCCATCCAGCTCCTGCCGTGAGTGCAGTGCACCAATGAGGCCG
 GTTCCATGCCCGCATGCCCTCTCCTCCAGTGTGGTGAATGCTGCTCAGAGCGTGTGTTGTTTCAGGCCTC
 CTCTCTGCAGCAGACACAAACCAGGTGCTCAAACAGGCCAAGCAGTGGAAAGACCTGCCCTGTCTGCAAC
 GAGCTCTTCCGTCCAACGTCTACCAGGTCCACATGGAGGTAGCGCATAAGCACAGCGAGTCCAAGTCTG
 GTGAGAAACTTGAGCCTGAAAACTGGCAGCGTGTGCACCATTTCTAAAGTGGATGAGAGAGAAAACGGT
 GCGATGTCTGTCTTGAAGTGTGTTCTCTGAGGAAGAGCTTATACACCACTTGTCTGATGCATGGCTT
 GGGTGTGTTCTGTCCATGCACCTTCCATGATATCAAAGTCTTTCAGAGCACAGCAGGAATAGGCACC
 TGGGAAGAAGAAGTTGCCTATGGATTAGCAACAGAGGTTTTCAATTAGATGTCGATGCCAATGGCAA
 CCTGCTCTTCCCACCTTGATTTTCATCACCATTGCAAGGAGAAGCTTGGGGAGCGGGAAGTCTAC
 TTGGCAATCCTGGCTGGGATACACTCCAAGTCACTGGTGCCTGTGTATGTGAAGGTGAGGCCCTCAGGCTG
 AGGGCACCCCGGAGCACCAGGCAAGCAGTGTCCACCTGCCCTTTTGTCTTGGCCCTTTGTGACAAC
 TGAGGCCATGAGCTGCATTTGAAGGAGAGGCCACCATCATGCCACAGTCCACACGGTCTGAAGTCT
 CCCGCCTTCAAGTGCATCCACTGCTGTGGGGTCTACACGGGAAATGACCCCTGGCTGCCATCGCCGTCC
 ATTTGGTGCCTGCAGAAGTGTCCCAAGGACAGCAGCTCAGACCTGCAGGCCAGCCGGGTTTTATTCA
 CAACAGTGAAGTCTTTTAGTCAGTGGTGAAGTGTGATGATGATCCAGTTTTTCTGTTAAGAGAAAGCTG
 CCTGACGGCCACTTAGGGGCCAAGACCAGCGGCATGGGGAGGAGCAGCCTCCATCCTAAATCCCGATG
 CAGCCCCGGTCCAGAAAAGGTGACGAGTGTGTCCTTTTAAAGACAAAGGAATGAAAGCAGACAGAGA
 GGGACCTATTGTCAAGGACGAGGCTCTTTCAGATTTTAGCATTAGATCCTAAAAAATATGAAAGCCGTTCT
 TATGAAGAAAAGAAGCAATTTCTTAAAGATTATTTCCATAAGAAACCATATCCTAGTAAAAAGAAATAG
 AACTGTTGCTCACTCTTTTGGGTGTGAAAAATTGATGTGGCTTCATTTTTTGGAAAAAGAAGGTATAT
 TTGCATGAAAGCAATAAAAAATCACAAGCCTTCTGTACTTTTAGGCTTTGATATGTCTGAACTTAAAAAT
 GTGAAACATAGATTGAACTTTGAATATGAACCA

ACGCGTACGCGGCCGCTCGAG – GFP Tag – GTTTAA

Protein Sequence:

>RG209813 representing NM_014913
 Red=Cloning site Green=Tags(s)

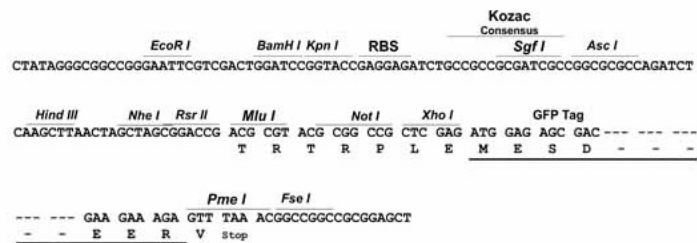
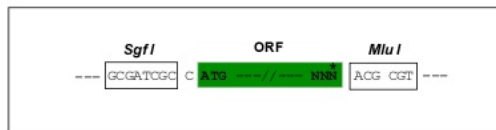
MFQIPVENLDNIRKVRKKVKGILVDIGLDSCHELLKDLKGFDPGEKYFHNTSWGDVSLWEPGKVKVRYRT
 KPYCCGLCKYSTKVLTSFKNHLHRYHEDEIDQELVIPCPNCFASQPKVVRHFRMFHAPVRKVQNYTVN
 ILGETKSSRSDVISFTCLKCNFSNTLYYSMKKHVLVAHFHYLINSYFGLRTEEMGEQPKTNDTVSIEKIP
 PPDKYCKKCNANASSQDALMYHILTSDIHRDLENKLRVISEHIKRTGLLKQTHIAPKPAHLAAPANG
 SAPSAPAQPPCFHLALPQNSPSPAAGQPVTVAQGAPGSLTHSPPAAGQSHMTLVSSPLPVGQNSLTLQPP
 APQPVFLSHGVPLHQSVNPPVPLPSQPVPVNVKSVGTSVLPINQTVRPGVPLPTQPVGPIINRVPVGPVLP
 VSPSVTPGVLQAVSPGVLVSRVAVPSGVLPAQQMTPAGQMPAGVIPGQTATSGVLTGQVMVQSGVLPVG
 QTAPSRVLPQGQTAPLRVISAQVVPSGLLSPNQTVSSSAVVPVNVQGVNSGVQLSQPVVSGVLPVGPV
 RPGVQLNQTVGTNLPVNQPVVRPGASQNTTFLTSGSILRQLIPTGKQVNGIPTYTLAPVSVTLVPPGG
 LATVAPPQMPIQLLPSGAAAPMAGSMPGMPSPVLVNAAQSVFVQASSAADTNQVLKQAKQWKTCPVCN
 ELFSPNVYQVHMEVAHKHSESKSSEKLEPEKLAACAPFLKWMREKTVRCLSCKCLVSEELIHLLMHGL
 GCLFCPCTFHDIKGLSEHSRNRHLGKKLPMDYSNRQFQLDVDANGNLLFPHLDFITILPKEKLGEREVY
 LAITLGLHSHKSLVPVYVKVRPQAEQTPGSTGKRVSTCPFCFGPFVTTEAYELHLKERHHIMPTVHTVLKS
 PAFKCIHCCGVYTGMMTLAAIAVHLVRCRSAPKDSDDLQAQPGFIHNSLELLVSGEVMHDSFVSRKRL
 PDGHLGAEDQRHGEEQPPILNADAAPGPEKVTSVVPFKRQRNESRTEGPIVKDEALQILALDPKYEGRS
 YEEKKQFLKDYFHKKPYPSKKEIELLSSLFWWKIDVASFFGKRRYICMKAIKNHKPSVLLGDFMSELKN
 VKHRLNFEYEP

TRTRPLE – GFP Tag – V

Restriction Sites: SgfI-MluI

Cloning Scheme:

Cloning sites used for ORF Shuttling:



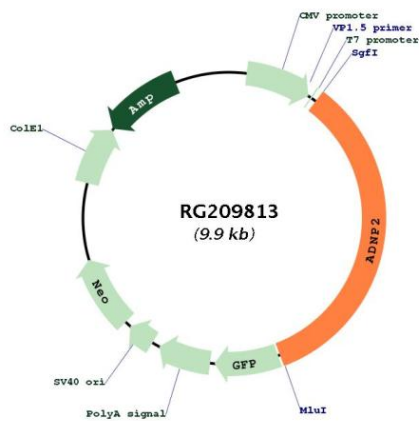
ACCN: NM_014913

ORF Size: 3393 bp

OTI Disclaimer: The molecular sequence of this clone aligns with the gene accession number as a point of reference only. However, individual transcript sequences of the same gene can differ through naturally occurring variations (e.g. polymorphisms), each with its own valid existence. This clone is substantially in agreement with the reference, but a complete review of all prevailing variants is recommended prior to use. [More info](#)

OTI Annotation:	This clone was engineered to express the complete ORF with an expression tag. Expression varies depending on the nature of the gene.
Components:	The ORF clone is ion-exchange column purified and shipped in a 2D barcoded Matrix tube containing 10ug of transfection-ready, dried plasmid DNA (reconstitute with 100 ul of water).
Reconstitution Method:	<ol style="list-style-type: none"> 1. Centrifuge at 5,000xg for 5min. 2. Carefully open the tube and add 100ul of sterile water to dissolve the DNA. 3. Close the tube and incubate for 10 minutes at room temperature. 4. Briefly vortex the tube and then do a quick spin (less than 5000xg) to concentrate the liquid at the bottom. 5. Store the suspended plasmid at -20°C. The DNA is stable for at least one year from date of shipping when stored at -20°C.
RefSeq:	<u>NM_014913.2</u> , <u>NP_055728.1</u>
RefSeq Size:	5403 bp
RefSeq ORF:	3396 bp
Locus ID:	22850
UniProt ID:	<u>Q6IQ32</u>
Cytogenetics:	18q23
Domains:	homeobox, zf-C2H2
Protein Families:	Transcription Factors
Gene Summary:	May be involved in transcriptional regulation.[UniProtKB/Swiss-Prot Function]

Product images:



Circular map for RG209813