

Product datasheet for **RG209790**

TMEM35 (TMEM35A) (NM_021637) Human Tagged ORF Clone

Product data:

Product Type: Expression Plasmids
Product Name: TMEM35 (TMEM35A) (NM_021637) Human Tagged ORF Clone
Tag: TurboGFP
Symbol: TMEM35
Synonyms: NACHO; TMEM35; TUF-1
Mammalian Cell Selection: Neomycin
Vector: pCMV6-AC-GFP (PS100010)
E. coli Selection: Ampicillin (100 ug/mL)
ORF Nucleotide Sequence: >RG209790 representing NM_021637
 Red=Cloning site Blue=ORF Green=Tags(s)

TTTTGTAATACGACTCACTATAGGGCGCCGGGAATTCGTCGACTGGATCCGGTACCGAGGAGATCTGCC
 GCC**CGATCGCC**

ATGGCATCCCCAGAACCCTAATTATTGTGGCCCTCTCAGTGGCCCTGGGACTCTTCTTTGTTTTTCATGG
 GGACTATCAAGCTGACCCCGAGCTCAGCAAGGATGCCTACAGTGAGATGAAACGTGCTTACAAGAGCTA
 TGTTCCGAGCCCTCCCTCTGCTGAAGAAAATGGGGATCAATTCATTCTCCTCCGAAAAAGCATTGGTGCC
 CTTGAAGTGGCCTGTGGCATCGTCATGACCCTTGTGCTGGGCGTCCCAAAGATGTGCCCAACTTCTTCC
 TACTGTTGCTGGTGTGGCTGTGCTCTTCTTCCACCAGCTGGTGGTATCCTCTCAAACGCTACGCCCA
 TGCTCTGGTGTGGGAATCCTGCTCACTTGCCGCCTGCTGATTGCTCGCAAGCCGGAAGACCGGTCTTCT
 GAGAAGAAGCCTTTGCCAGGGAATGCTGAGGAGCAACCCTCCTTATATGAGAAGGCCCTCAGGGCAAAG
 TGAAGGTGTCA

ACGCGTACGCGGCCGCTCGAG - GFP Tag - GTTTAA

Protein Sequence: >RG209790 representing NM_021637
 Red=Cloning site Green=Tags(s)

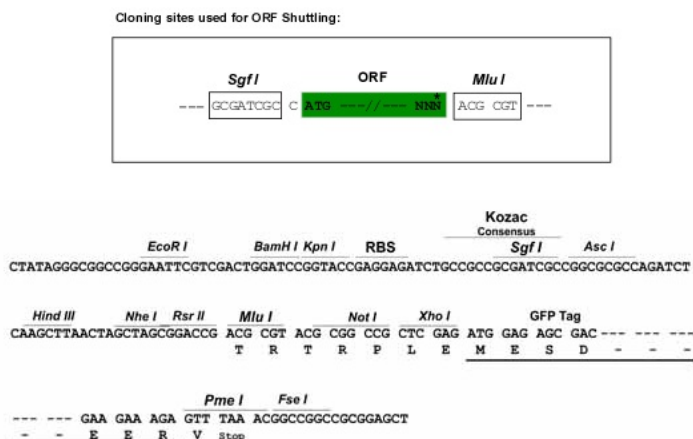
MASPRTVTIVALSVLGLFFVFMGTIKLTPRLSKDAYSEMCRAYKSYVRALPLLKMGINSILLRKSIGA
 LEVACGI VMTLVPGRPKDVANFFLLLLVLAVLFFHQLVGDPLKRYAHALVFGILLTCRLLIARKPEDRSS
 EKKPLPGNAEEQPSLYEKAPQGKVKVS

TRTRPLE - GFP Tag - V

Restriction Sites: Sgfl-MluI



[View online »](#)

Cloning Scheme:


ACCN: NM_021637

ORF Size: 501 bp

OTI Disclaimer: The molecular sequence of this clone aligns with the gene accession number as a point of reference only. However, individual transcript sequences of the same gene can differ through naturally occurring variations (e.g. polymorphisms), each with its own valid existence. This clone is substantially in agreement with the reference, but a complete review of all prevailing variants is recommended prior to use. [More info](#)

OTI Annotation: This clone was engineered to express the complete ORF with an expression tag. Expression varies depending on the nature of the gene.

Components: The ORF clone is ion-exchange column purified and shipped in a 2D barcoded Matrix tube containing 10ug of transfection-ready, dried plasmid DNA (reconstitute with 100 ul of water).

Reconstitution Method:

1. Centrifuge at 5,000xg for 5min.
2. Carefully open the tube and add 100ul of sterile water to dissolve the DNA.
3. Close the tube and incubate for 10 minutes at room temperature.
4. Briefly vortex the tube and then do a quick spin (less than 5000xg) to concentrate the liquid at the bottom.
5. Store the suspended plasmid at -20°C. The DNA is stable for at least one year from date of shipping when stored at -20°C.

RefSeq: [NM_021637.3](#)

RefSeq Size: 2039 bp

RefSeq ORF: 504 bp

Locus ID: 59353

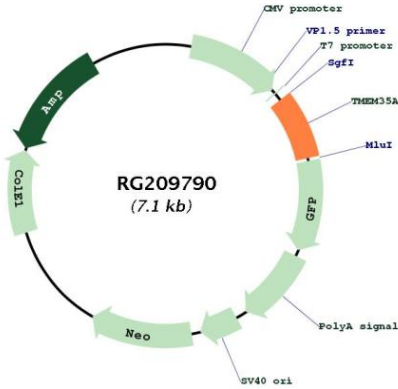
UniProt ID: [Q53FP2](#)

Cytogenetics: Xq22.1

Protein Families: Transmembrane

Gene Summary: A soluble peptide released by shedding may interact with NGFR and modulate neurite outgrowth.[UniProtKB/Swiss-Prot Function]

Product images:



Circular map for RG209790