

Product datasheet for **RG209769**

GBP4 (NM_052941) Human Tagged ORF Clone

Product data:

Product Type:	Expression Plasmids
Product Name:	GBP4 (NM_052941) Human Tagged ORF Clone
Tag:	TurboGFP
Symbol:	GBP4
Synonyms:	Mpa2
Mammalian Cell Selection:	Neomycin
Vector:	pCMV6-AC-GFP (PS100010)
E. coli Selection:	Ampicillin (100 ug/mL)



[View online »](#)

ORF Nucleotide Sequence:

>RG209769 representing NM_052941
 Red=Cloning site Blue=ORF Green=Tags(s)

TTTTGTAATACGACTCACTATAGGGCGGCCGGAATTCGTCGACTGGATCCGGTACCGAGGAGATCTGCC
 GCC**GCGATCGCC**

ATGGGTGAGAGAACTCTTCACGCTGCAGTGCCACACCAGGTTATCCAGAATCTGAATCCATCATGATGG
 CCCCATTGTCTAGTGGAAAACCAGGAAGAGCAGCTGACAGTGAATTCAAAGGCATTAGAGATTCTTGA
 CAAGATTTCTCAGCCCGTGGTGGTGGCCATTGTAGGGCTATACCGCACAGGAAAATCTATCTCATG
 AATCGTCTGCAGGAAAGCGCAATGGCTTCCCTCTGGGCTCCACGGTGCAGTCTGAAACTAAGGGCATCT
 GGATGTGGTGTGTGCCACCTCTAAGCCAAACCACACCTGGTCTTCTGGACACCGAGGGCCTGGG
 CGATGTAGAAAAGAGTAACCCTAAGAATGACTCGTGGATCTTGGCCCTGGCTGTGCTTCTAAGCAGCAGC
 TTTGTCTATAACAGCGTGAGCACCATCAACCACAGGCCCTGGAGCAGCTGCACTATGTGACTGAGCTAG
 CAGAGCTAATCAGGGCAAAATCTGCCACAGCTGATGAAGCTGAGGACTCCAGCGAGTTTGCAGT
 CTTTCCAGACTTTATTTGGACTGTTCCGGATTTTACCCTGGAGCTAAAGTTAGATGGAAACCCATCACA
 GAAGATGAGTACCTGGAGAATGCCTTGAAGCTGATTCAGGCAAGAATCCAAAAATTCAAAAATCAAACA
 TGCCCTAGAGAGTGTATCAGGCATTTCTCCGAAAACGGAAGTGCTTTGTCTTTGACCGGCCATACAAATGA
 CAAGCAATATTTAAATCATATGGACGAAGTGCCAGAAGAAAATCTGGAAAGGCATTTCTTATGCAATCA
 GACAACCTCTGTTCTTATATCTTACCCATGCAAAGACCAAGACCTGAGAAAAGGGAATCATTGTCACTG
 GAAAGCGGCTGGGGACTCTGGTGGTGACTTATGTAGATGCCATCAACAGTGGAGCAGTACCTTGTCTGGA
 GAATGCAGTGACAGCACTGGCCAGCTTGAGAACCAGCGGCTGTGCAGAGGGCAGCCGACCACTATAGC
 CAGCAGATGGCCAGCAACTGAGGCTCCACAGACAGCTCCAGGAGCTGCTGGACGTGCATGCAGCCT
 GTGAGAGGGAAGCCATTGCAGTCTTCAAGGACTCCTTCAAGGATGAAAACCATGAATCCAGAAGAA
 GCTTGTGGACACCATAGAGAAAAGAAGGGAGACTTTGTGCTGAGAATGAAGAGGCATCTGCCAAATAT
 TGCCAGGCTGAGCTTAAGCGGCTTTCAGAGCACCTGACAGAAAAGCATTGAGAGGAATTTCTCTGTTT
 CTGGAGGACACAATCTCTACTTAGAAGAAAAGAAACAGGTTGAGTGGGACTATAAGCTAGTGCCAGAAA
 AGGAGTTAAGGCAAACGAGGCTCCAGAACTTCTGCAGTACAGGTGGTTGTAGAGGAATCCATCCTG
 CAGTCAGACAAAGCCCTCACTGCTGGAGAGAAGTCCATAGCAGCGGAGCGGGCCATGAAGGAAGCAGCTG
 AGAAGGAACAGGAGCTGTAAGAGAAAACAGAAAGGAGCAGCAGCAATGATGGAGGCTCAAGAGAGAAG
 CTTCCAGGAATACATGGCCAAATGGAGAAGAAGTTGGAGGAGGAAAGGAAAACCTTCTCAGAGAGCAT
 GAAAGGCTGCTAAAACACAAGCTGAAGGTACAAGAAGAAATGCTTAAAGGAAGATTTCAAAGAAATCTG
 AGCAGTTAAATAAAGAGATTAATCAACTGAAAGAAAAAATGAAAGCACTAAAAATGAACAGTTAAGGCT
 CTTAAAGATCCTTGACATGGCTAGCAACATAATGATTGCTACTCTACCTGGGGCTTCCAAGCTACTTGGA
 GTAGGGACAAAATATCTTGGCTCACGTATT

ACGCGTACGCGGCCGCTCGAG – GFP Tag – GTTTAA

Protein Sequence:

>RG209769 representing NM_052941
 Red=Cloning site Green=Tags(s)

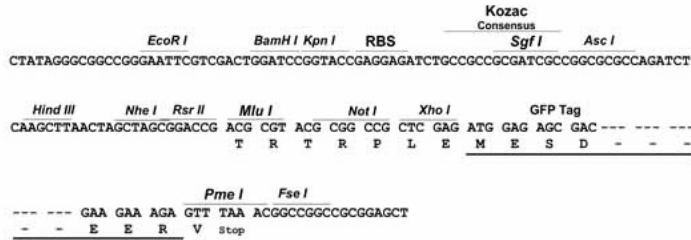
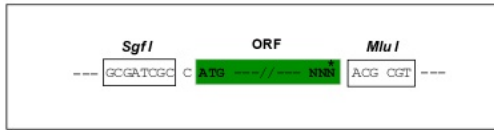
MGERTLHAAVPTPGYPESESIMMAPICLVENQEEQLTVNSKALEILDKISQPVVVVAIVGLYRTGKSYLM
 NRLAGKRNPFPLGSTVQSETKGIWMWCVPHLSKPNHTLVLLDTEGLGDVEKSNPKNDWIFALAVLLSSS
 FVYNSVSTINHQAELQLHYVTELAELIRAKSCPRPDEAEDSSEFASFPPDFIWTVRDFTLELKLGNPIT
 EDEYLENALKLIPGKNPKIQNSNMPRECI RHF FRKRKCFVDRPTNDKQYLNHMDEVPEENLERHFLMQS
 DNFCSYIFTHAKTKLRKGIIVTGKRLGTLVVTVYDAINS GAVPCLENAV TALAQL ENPAAVQRAADHYS
 QQMAQQLRPTDTLQELLDVHAACEREAIVFMEHSFKDENHEFQKLVDTIEKKKGDFVLQNEEASAKY
 CQAE LKRLSEHLTESILRGI FSVPGGHNLYLEEKQVVEWDYKLVPRKGVKANEVLQNFLQSQVVVEESIL
 QSDKALTAGEKSI A AERAMKEAAEKEQELLREKQKEQQMMEAQERSFQEYMAQMEKKLEERENLLREH
 ERLKHKLVQEEMLKEEFQKSEQLNKEINQLKEKIESTKNEQLRLKILDMASNIMIVTLPGASKLLG
 VGTKYLSRI

TRTRPLE – GFP Tag – V

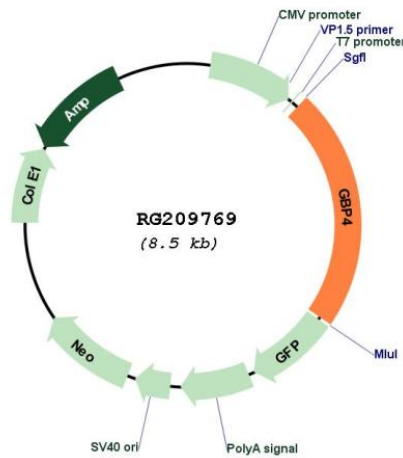
Restriction Sites: SgfI-MluI

Cloning Scheme:

Cloning sites used for ORF Shuttling:



Plasmid Map:



ACCN: NM_052941

ORF Size: 1920 bp

OTI Disclaimer:	The molecular sequence of this clone aligns with the gene accession number as a point of reference only. However, individual transcript sequences of the same gene can differ through naturally occurring variations (e.g. polymorphisms), each with its own valid existence. This clone is substantially in agreement with the reference, but a complete review of all prevailing variants is recommended prior to use. More info
OTI Annotation:	This clone was engineered to express the complete ORF with an expression tag. Expression varies depending on the nature of the gene.
Components:	The ORF clone is ion-exchange column purified and shipped in a 2D barcoded Matrix tube containing 10ug of transfection-ready, dried plasmid DNA (reconstitute with 100 ul of water).
Reconstitution Method:	<ol style="list-style-type: none">1. Centrifuge at 5,000xg for 5min.2. Carefully open the tube and add 100ul of sterile water to dissolve the DNA.3. Close the tube and incubate for 10 minutes at room temperature.4. Briefly vortex the tube and then do a quick spin (less than 5000xg) to concentrate the liquid at the bottom.5. Store the suspended plasmid at -20°C. The DNA is stable for at least one year from date of shipping when stored at -20°C.
RefSeq:	NM_052941.2 , NP_443173.2
RefSeq Size:	5460 bp
RefSeq ORF:	1923 bp
Locus ID:	115361
UniProt ID:	Q96PP9
Cytogenetics:	1p22.2
Domains:	GBP
Gene Summary:	Guanylate-binding proteins, such as GBP4, are induced by interferon and hydrolyze GTP to both GDP and GMP (Vestal, 2005 [PubMed 16108726]).[supplied by OMIM, Dec 2008]