

Product datasheet for **RG209767**

PAPP A (PAPPA) (NM_002581) Human Tagged ORF Clone

Product data:

Product Type: Expression Plasmids
Product Name: PAPP A (PAPPA) (NM_002581) Human Tagged ORF Clone
Tag: TurboGFP
Symbol: PAPP A
Synonyms: ASBABP2; DIPLA1; IGFBP-4ase; PAPA; PAPP-A; PAPPA1
Mammalian Cell Selection: Neomycin
Vector: pCMV6-AC-GFP (PS100010)
E. coli Selection: Ampicillin (100 ug/mL)
ORF Nucleotide Sequence: >RG209767 representing NM_002581
Red=Cloning site Blue=ORF Green=Tags(s)

TTTTGTAATACGACTCACTATAGGGCGGCCGGAATTCGTCGACTGGATCCGGTACCGAGGAGATCTGCC
GCC**CGATCGCC**

ATGCGGCTCTGGAGTTGGGTGCTGCACCTGGGGCTGCTGAGCGCCGCGCTGGGCTGCGGGCTGGCCGAGC
GTCCCCGCGGGCCGGAGAGACCCGCGGGCCGGCCGACCCCGCGCCCCGCGCCGGCCCGCCACCTG
CGCCACCCGGGCGGCCCGCGCCGCGCCTCGCCGCGCCGCCCGCGCCGGCGGTGCTGGGAA
GCCGTGCGCGTCCCCGCGCGGCAGCAGCGGGAGGCGAGGGGCGCCACCGAGGAGCCGAGCCCGCGA
GCCGGGCGCTCTATTTACGCGGGCGAGGCGAGCAGCTGCGCCTCCGGGCCGACCTCGAGCTGCCCGGGA
CGCGTTCACGCTGCAAGTGTGGCTGCGAGCGGAGGGGGCCAGAGGTCTCCGGCAGTGATCACAGGGCTG
TATGACAAATGTTCTTATATCTCACGTGACCGAGGATGGGTCTGGGCATTACACCCATCAGTGACCAAG
ACAACAAAGACCCACGCTACTTTTTCTCCTTGAAGACAGACCCGAGCCCGCAAGTGACCACCATCAATGC
CCACCGCAGCTACCTCCCAGGCCAGTGGGTATACCTAGCTGCCACCTATGATGGGCAGTTCATGAAGCTC
TATGTGAATGGTGCCAGGTGGCCACCTCTGGGAACAAGTGGGTGGCATATTCAGCCACTGACCCAGA
AGTGCAAAGTGTCTATGTTAGGGGCGAGTGCCTGAATCACAACCTACCGGGGCTACATCGAGCACTTCAG
TCTGTGGAAGGTGGCCAGGACTCAGCGGAGATACTGTCTGACATGGAACCCATGGCGCCACACTGCT
CTACCTCAGCTCCTCCTCAGGAGAATGGGACAATGTGAAGCATGCCTGGTCCCCATGAAGGATGGCA
GCAGCCCCAAAGTGAAATTCAGCAATGCCACGGCTTTCTGCTGGACACGAGTCTGGAGCCTCCTCTGTG
TGGACAGACATTGTGTGACAACACAGAGGTCATTGCCAGCTACAATCAGCTCTCAAGTTTCCGCCAGCCC
AAGGTGGTGCCTACCGGTGGTCAACCTCTATGAAGATGATCATAAGAACCCGACGGTGACGCGGAGC
AGGTGGACTTCCAGCACCATCAGCTGGCTGAGGCCTTCAAGCAATACAACATCTCCTGGGAGCTGGACGT
GCTGGAGGTGAGCAACTCCTCTCTCGCCCGCCCTCATCTGGCCAAGTGTGACATCAGCAAGATTGGG
GATGAGAACTGTGACCCCGAGTGAACACACGCTGACGGCCACGACGGCGGGATTGCCCCACCTGC
GCCACCCTGCCTTCGTGAAGAAGCAGCACACGGGGTGTGTGACATGGACTGCAACTATGAACGGTTCAA
CTTTGATGGTGGAGAGTCTGTGACCCTGAAATACCAATGTCACTCAGACTTGCTTTGACCCGACTCT



CCACACAGAGCCTACTTGGATGTTAATGAGCTGAAGAACATTCTTAAATTGGATGGATCAACACATCTCA
 ATATTTTCTTTGCAAAATCCTCAGAGGAGGAGTTGGCAGGAGTAGCAACTTGGCCATGGGACAAGGAGGC
 CCTGATGCACTTAGGTGGCATTGTCTTGAACCCATCTTTCTATGGCATGCCTGGGCACACCCACACCATG
 ATCCATGAGATTGGTCACAGCCTGGGCCTCTATCACGCTTCCGAGGCATCTCAGAAATCCAGTCTGCA
 GTGACCCCTGCATGGAGACAGAGCCCTCCTTCGAGACTGGAGACCTCTGCAATGATACCAACCCAGCCCC
 TAAACACAAGTCTGTGGTGACCCAGGGCCAGGAAATGACACCTGTGGCTTTCATAGCTTCTTCAACAT
 CCTTACAACAACCTCATGAGCTATGCAGATGACGACTGTACGGACTCCTTACGCCCCAATCAAGTCGCCA
 GAATGCACTGTTACCTGGACCTGGTCTACCAGGGCTGGCAGCCCTCCAGGAAACCAGCGCCTGTTGCCCT
 CGCCCCCAAGTTCTGGGCCACACAACGGACTCTGTGACACTGGAGTGGTCCCACCTATAGATGGCCAT
 TTCTTTGAAAGAGAATTGGGATCAGCATGTCATCTTTCCTGGAAGGGAGAATCCTGGTGCAGTATGCTT
 CCAACGCTTCTCCCAATGCCCTGCAGCCATCAGGACACTGGAGCCCTCGTGAAGCAGAAGGTATCC
 TGATGTTGAACAGCCCTGAAGTCCAGTGTCCGCACCTGGAGCCAAATTCAGCTGTCAACCCACACACG
 GTTCTCCAGCCTGCCCTGAGCCTCAAGGCTGCTACCTCGAGCTGGAGTTCCTTACCCCTTGGTCCCTG
 AGTCTCTGACCATTTGGGTGACCTTGTCTCCACTGACTGGGACTCTAGTGGAGCTGTCAATGACATCAA
 ACTGTTGGCTGTGAGTGGGAAGAACATCTCCCTGGGTCTCAGAAATGTCTTCTGTGATGTCCCACTGACC
 ATCAGACTCTGGGACGTGGGCGAGGAGGTGATGGCATCCAAATCTACAGCTGGATGAGCACCTGGAGA
 TCGATGCTGCCATGTTGACCTCCACTGCAGACACCCCACTCTGTCTACAGTGAAGCCCTGAAGTATAA
 GGTGGTCCGGACCCCTCCTCAGATGGATGTGGCCTCCATCCTACATCTCAATAGGAAATTCGTAGAC
 ATGGATCTAAATCTTGGCAGTGTGTACCAGTATTGGGTCACTAATTTTCAGGAACTGAAGAGAGTGAGC
 CATCACCTGTGTACATACATCCATGGAAGTGGGTACTGTGGCGATGGCATTATACAAAAAGACCAAGG
 TGAACAATGCGACGACATGAATAAGATCAATGGTATGGCTGTCCCTTTTCTGCCGACAAGAAGTCTCC
 TTCAATTTGATTGATGAACCCAGCCGGTGTCTATTTCCATGATGGTATGGGGTATGTGAGGAGTTGAAC
 AAAAAACCAACATTAAGGACTGTGGTGTCTACACGCCCCAGGGATTCTGGATCAGTGGGCATCCAATGC
 TTCAGTATCTCATCAAGACCAGCAATGCCAGGCTGGGTATCATCGGACAGCCAGCAGCATCCAGGTG
 TGTGCAACCAAGGTGATAGATCTCAGTGAAGGCATTTCCAGCATGCCTGGTACCCTTGACCATCAGCT
 ACCCATATTTCCAGCTGGCTCAGACCACTTTTTGGCTCCGGGCGTATTTTTCTCAACCAATGGTGGCCG
 AGCTGTCAATTGTCCACCTGGTGACGGATGGGACATATTATGGGGACAAAAGCAGGAGACCATCAGCGTG
 CAGCTGCTTGATACCAAAGATCAGAGCCAGCATAGGCTCCATGTCTGAGCTGCAGGAACAATCCCC
 TGATTATCCCTGTGGTCCATGACCTCAGCCAGCCCTTCTACCACAGCCAGGCGGTACGTGTGAGCTTCAG
 TTCGCCCTGGTCCCATCTCGGGGTGGCCCTCCGTTCTTCGACAACCTTGACCCCGTACCCTGAGC
 AGCTGCCAGAGAGGGGAGACCTACAGCCCTGCCGAGCAGAGCTGCGTGCCTTCCGATGTGAGAAAATG
 ACTGTCCAGAGCTGGCTGTGGAGAATGCTTATCTCAATTGCTCCAGCAGGACCCGCTACCACGGTGGCCA
 GTGTAAGTGTGAGCTGCCGGACAGGCTACGTGCTCCAGATACGGCCGGATGATGAGCTGATCAAGAGCCAG
 ACGGGACCCAGCGTCACAGTACCTGTACAGAGGGCAAGTGAATAAGCAGGTGGCCTGTGAGCCAGTGC
 ACTGCAGCATCCCAGATCACCATCAAGTCTATGCTGCCTCCTTCTCCTGCCCTGAGGGCACCACCTTTGG
 CAGTCAATGTTCCCTTCCAGTGGCGTACCCTGCACAATTGAAAGGCAACAACAGCCTCCTGACCTGCATG
 GAGGATGGGCTGTGGTCTTCCAGAGGCCCTGTGTGAGCTCATGTGCCTCGCTCCACCCCTGTGCCCA
 ATGCAGACCTCCAGACCCCGGTGCCGAGAGAATAAGCACAAGTGGGCTCCTTCTGCAAAATACAAATG
 CAAGCCTGGATACCATGTGCCTGGATCCTCTCGGAAGTCAAAGAAACGGGCTTCAAGACTCAGTGTACC
 CAGGATGGCAGCTGGCAGGAGGAGCTTGTGTTCCCTGTGACCTGTGACCCACCTCCACAAAATTCATG
 GGCTCTACCAGTGTACTAATGGCTTCCAGTTCAACAGTGAAGTGTGAGGATCAAGTGTGAAGACAGTATGC
 CTCCCAGGGACTTGGGAGCAATGTCAATTCATTGCGGAAAGATGGCACCTGGAACGGCTCCTTCCATGTC
 TGCCAGGAGATGCAAGGCCAGTGTGCGTTCCAAACGAGCTCAACAGCAACCTCAAAGTGCAGTGCCTG
 ATGGCTATGCCATAGGGTCGGAGTGTGCCACCTCGTGCCTGGACCACAACAGCGAGTCCATCATCTGCC
 AATGAACGTGACCGTGCCTGACATCCCCACTGGCTGAACCCACACGGGTAGAGAGAGTGTCTGCACT
 GCTGGTCTCAAGTGGTATCCTCACCTGCTCTGATTCACTGTGTCAAAGGCTGTGAGCCCTTCAAGGAG
 ACAATTATTGTGATGCCATCAACAACCGAGCCTTTTGCAACTATGACGGTGGGGATTGCTGCACCTCCAC
 AGTGAAGACCAAAAAGGTACCCCAATCCCTATGCTCCTGTGACCTACAAGGTGACTGTGCTTGTGCGGAC
 CCCCAGGCCCAAGAACACAGCCGAAAGACCTCCAGGGATACAGCCATGGC

AGCGGACCGACGCGTACGCGGCCGCTCGAG - GFP Tag - GTTTAA

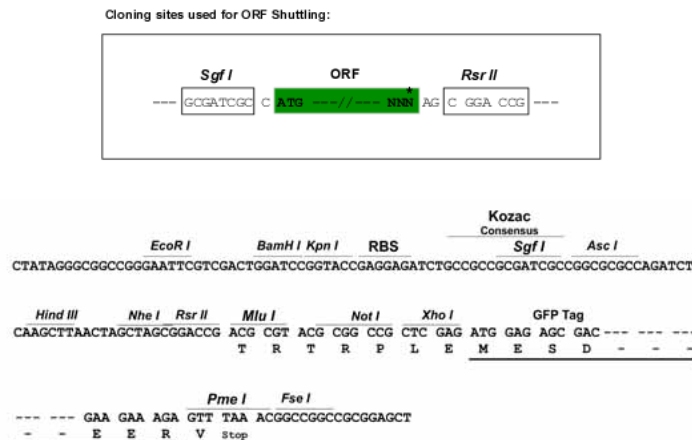
Protein Sequence: >RG209767 representing NM_002581
 Red=Cloning site Green=Tags(s)

MRLWSVWLHLGLLSAALGCGLAERPRRARRDRPRAGPRRPAAGPATCATRAARGRRASPPPPPPGGAW
 AVRVPRRRQREARGATEEPSPPSRALYFSGRGEQLRLRADLELPRDAFTLQVWLR AEGGQRSPAVITGL
 YDKCSYISRDRGWVVGIIHTISDQDNKDPRIYFFSLKTD RARQVTTINAHRSYLPQGWVYLAATYDGGQFMKL
 YVNGAQVATSGEQVGGIFSPLTQKCKVLM L GGSALNHNYRGYIEHFSLWKVARTQREILSDMETHGAHTA
 LPQLLLQENWDNVKHAWSPMKDGSSPKVEFSNAHGFLDTSLEPPLCGQTLCDNTEVIASYNQLSSFRQP
 KVVRVRYVNL YEDDHKNPTVTREQVDFQHHQLAEAFKQYINISWELDVLEVSNSLRRRLILANCDISKIG
 DENCDEPCNHTLTGHDGGDCRHLRHPAFVKQHNGVCDMDCNYERFNFDGGECDDPEITNVTQTCTCFDPS
 PHRAYLDVNELKNILKLDGSTHLNIFFAKSSEEELAGVATWPWDKEALMHLGGIVLNPSFYGMPGHHTM
 IHEIGHSLGLYHVFIRGISEIQSCSDPCMETEPSFETGDLCDNTNPAPKHKSCGDPGPGNDTCGFHSFNT
 PYNMFMSYADDDCTDSF TPNQVARMHCYLDLVYQGWQPSRKPAPVALAPQVLGHTTDSVTLEWFPIDGH
 FFERELGSACHLCLEGRILVQYASNASSPMP CSPSGHWSPREAEGHPDVEQPCSSVRTWSPNSAVNPHT
 VPPACPEPQGCYLELEFLYPLVPESLTIWVTFVSTDWSSGAVNDIKLLAVSGKNI SLGPQNVFCDVPLT
 IRLWDVGEVYGIQIYITLDEHLEIDAAMLTSTADTPLCLQCKPLKYKVV RD PPLQMDVASILHLNRKFVD
 MDLNLGVSYYQYVWITISGTEESESPAVTYIHGSGYCGDGI IQKDQGEQCDDMNKINGDGC SLFCRQEVS
 FNCIDEPSRCYFHDGDGVCEEFEQKTSIKDCGVYTPQGFLDQWASNASVSHQDQCPGWV IIGQPAASQV
 CRTKVIDLSEGISQHAWYPTISYPYSQLAQTTFWLRA YFSQPMVAAAVIHLVTDGTYYGDKQETISV
 QLLDTKDQSHDLGLHVLSCRNNPLIIPVVHDL SQPFYHSQAVRVFS S SPLVAISGVALRSFDFNPVTL S
 SCQRGETYSPAEQSCVHFACEKTDCEPELAVENAYLNCSSSDRYHGAQCTVSCRTGYVLQIRRDDELIKSQ
 TGP SVT VTCTEGKWNKQVACEPVDCSIPDHHQVYAASF S CPEGTTFGSQCSFQCRHPAQLKGNNSLLTCM
 EDGLWSFPEALCELMCLAPPPVPNADLQTARCRENKHKVG SFCKYKCKPGYHVPGSSRKS KRAFKTQCT
 QDGSWQEGACVPVTCDDPPPKFHGLYQCTNGFQFNSECR IKCEDSDASQGLG SNVIHCRKDG TWNGSFHV
 CQEMQGC SVPNELNSNLKLCQPDGYAIGSECATSCLDHNSEIILPMNVTVRDI PHWLNPTRVERVYCT
 AGLK WYPHPALIHCVKGC EPFMGDNYCDAINNRAF CNYDGGDCCTSTVKTKKVTPFMSCDLQGDACR D
 PQAQEHSRKDLQGYSHG

SGPTRRRLE - GFP Tag - V

Restriction Sites: SgfI-RsrII

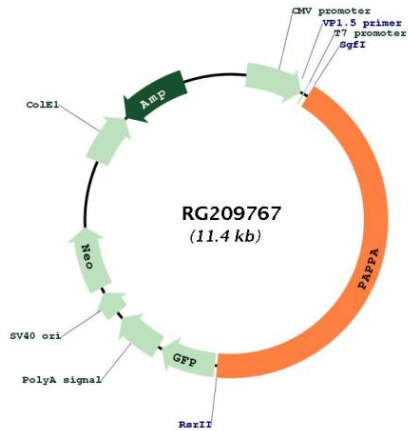
Cloning Scheme:



ACCN: NM_002581

ORF Size:	4881 bp
OTI Disclaimer:	<p>Due to the inherent nature of this plasmid, standard methods to replicate additional amounts of DNA in E. coli are highly likely to result in mutations and/or rearrangements. Therefore, OriGene does not guarantee the capability to replicate this plasmid DNA. Additional amounts of DNA can be purchased from OriGene with batch-specific, full-sequence verification at a reduced cost. Please contact our customer care team at custsupport@origene.com or by calling 301.340.3188 option 3 for pricing and delivery.</p> <p>The molecular sequence of this clone aligns with the gene accession number as a point of reference only. However, individual transcript sequences of the same gene can differ through naturally occurring variations (e.g. polymorphisms), each with its own valid existence. This clone is substantially in agreement with the reference, but a complete review of all prevailing variants is recommended prior to use. More info</p>
OTI Annotation:	This clone was engineered to express the complete ORF with an expression tag. Expression varies depending on the nature of the gene.
Components:	The ORF clone is ion-exchange column purified and shipped in a 2D barcoded Matrix tube containing 10ug of transfection-ready, dried plasmid DNA (reconstitute with 100 ul of water).
Reconstitution Method:	<ol style="list-style-type: none"> 1. Centrifuge at 5,000xg for 5min. 2. Carefully open the tube and add 100ul of sterile water to dissolve the DNA. 3. Close the tube and incubate for 10 minutes at room temperature. 4. Briefly vortex the tube and then do a quick spin (less than 5000xg) to concentrate the liquid at the bottom. 5. Store the suspended plasmid at -20°C. The DNA is stable for at least one year from date of shipping when stored at -20°C.
RefSeq:	NM_002581.3 , NP_002572.2
RefSeq Size:	11025 bp
RefSeq ORF:	4884 bp
Locus ID:	5069
UniProt ID:	Q13219
Cytogenetics:	9q33.1
Protein Families:	Druggable Genome, Protease, Secreted Protein
Gene Summary:	<p>This gene encodes a secreted metalloproteinase which cleaves insulin-like growth factor binding proteins (IGFBPs). Following IGFBP cleavage, insulin growth factors dissociate from IGFBPs and bind to IGF receptors, resulting in activation of the IGF pathway. The encoded protein plays a role in bone formation, inflammation, wound healing and female fertility. Enhanced expression of this protein is associated with diabetic nephropathy in human patients and this protein may promote tumor invasion and growth in various human cancers. [provided by RefSeq, Aug 2017]</p>

Product images:



Circular map for RG209767