

## Product datasheet for **RG209766**

### LRP15 (LRRC3B) (NM\_052953) Human Tagged ORF Clone

#### Product data:

Product Type:	Expression Plasmids
Product Name:	LRP15 (LRRC3B) (NM_052953) Human Tagged ORF Clone
Tag:	TurboGFP
Symbol:	LRP15
Synonyms:	LRP15
Mammalian Cell Selection:	Neomycin
Vector:	pCMV6-AC-GFP (PS100010)
E. coli Selection:	Ampicillin (100 ug/mL)
ORF Nucleotide Sequence:	>RG209766 representing NM_052953 Red=Cloning site Blue=ORF Green=Tags(s)

TTTTGTAATACGACTCACTATAGGGCGGCCGGAATTCGTCGACTGGATCCGGTACCGAGGAGATCTGCC  
GCC**CGATCGCC**

ATGAATCTGGTAGACCTGTGGTTAACCCGTTCCCTCTCCATGTGTCTCCTCCTACAAAGTTTTGTTCTTA  
TGATACTGTGCTTTCATTCTGCCAGTATGTGTCCCAAGGGCTGTCTTTGTTCTCCTCTGGGGGTTTAAA  
TGTCACCTGTAGCAATGCAAATCTCAAGGAAATACCTAGAGATCTTCTCCTGAAACAGTCTTACTGTAT  
CTGGACTCCAATCAGATCACATCTATTCCAATGAAATTTTTAAGGACCTCCATCAACTGAGAGTTCTCA  
ACCTGTCCAAAAATGGCATTGAGTTTATCGATGAGCATGCCTTCAAAGGAGTAGCTGAAACCTTGCAGAC  
TCTGGACTTGCCGACAATCGGATTCAAAGTGTGCACAAAAATGCCTTCAATAACCTGAAGGCCAGGGCC  
AGAATTGCCAACCAACCCCTGGCACTGCGACTGACTCTACAGCAAGTTCTGAGGAGCATGGCGTCCAATC  
ATGAGACAGCCCAACGATCTGTAACCGTCCGTGTTGGATGAACATGCTGGCAGACCATTCCTCAA  
TGCTGCCAACGACGCTGACCTTTGTAACCTCCCTAAAAAACTACCGATTATGCCATGCTGGTCACCATG  
TTTGGCTGGTCACTATGGTGATCTCATATGTGGTATATTATGTGAGGCAAAATCAGGAGGATGCCCGGA  
GACACCTCGAATACTTGAATCCCTGCCAAGCAGGCAGAAGAAAGCAGATGAACCTGATGATATTAGCAC  
TGTGTA

**ACGCGTACGCGGCCGCTCGAG** - GFP Tag - GTTTAA



[View online »](#)

**Protein Sequence:** >RG209766 representing NM\_052953  
 Red=Cloning site Green=Tags(s)

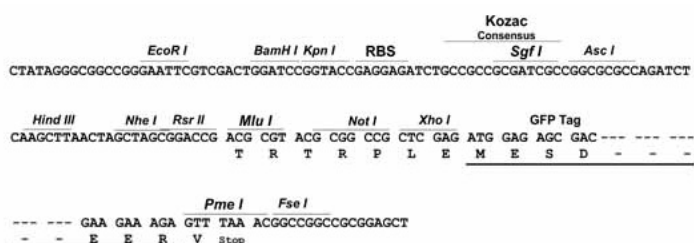
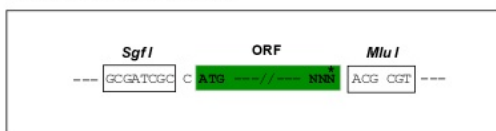
MNLVDLWLTRSLSMCLLLQSFLMILCFHSASMCPKGCLCSSSGGLNVTCSNANLKEIPRDLPPETVLLY  
 LDSNQITSIPNEIFKDLHQLRVLNLSKNGIEFIDEHAFKGV AETLQTLDSLSDNR IQSVHKNAFNLLKARA  
 RIANNPWHCDCTLQQVLRSMASHETAHNVICKT SVLDEHAGRPF LNAANDADL CNLPKKT TDYAMLVTM  
 FGWFTMVISYVVVYVRQNE DARRHLEYL KSLPSRQKKADEPDDISTVV

TRTRPLE - GFP Tag - V

**Restriction Sites:** SgfI-MluI

**Cloning Scheme:**

Cloning sites used for ORF Shutting:



**ACCN:** NM\_052953

**ORF Size:** 777 bp

**OTI Disclaimer:** The molecular sequence of this clone aligns with the gene accession number as a point of reference only. However, individual transcript sequences of the same gene can differ through naturally occurring variations (e.g. polymorphisms), each with its own valid existence. This clone is substantially in agreement with the reference, but a complete review of all prevailing variants is recommended prior to use. [More info](#)

**OTI Annotation:** This clone was engineered to express the complete ORF with an expression tag. Expression varies depending on the nature of the gene.

**Components:** The ORF clone is ion-exchange column purified and shipped in a 2D barcoded Matrix tube containing 10ug of transfection-ready, dried plasmid DNA (reconstitute with 100 ul of water).

**Reconstitution Method:**

1. Centrifuge at 5,000xg for 5min.
2. Carefully open the tube and add 100ul of sterile water to dissolve the DNA.
3. Close the tube and incubate for 10 minutes at room temperature.
4. Briefly vortex the tube and then do a quick spin (less than 5000xg) to concentrate the liquid at the bottom.
5. Store the suspended plasmid at -20°C. The DNA is stable for at least one year from date of shipping when stored at -20°C.

**RefSeq:** [NM\\_052953.3](#)

**RefSeq Size:** 1718 bp

**RefSeq ORF:** 780 bp

**Locus ID:** 116135

**UniProt ID:** [Q96PB8](#)

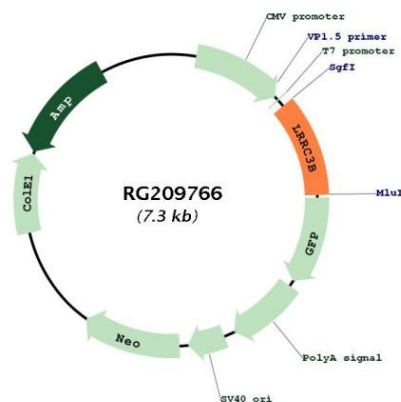
**Cytogenetics:** 3p24.1

**Domains:** LRRNT, LRR, LRR\_TYP

**Protein Families:** Transmembrane

**Gene Summary:** The protein encoded by this gene is a tumor suppressor, with lowered expression levels found in gastric, renal, colorectal, lung, and breast cancer tissues. The promoter of this gene is frequently hypermethylated in these cancer tissues, although the hypermethylation does not appear to be the cause of the reduced expression of this gene. Several transcript variants encoding the same protein have been found for this gene. [provided by RefSeq, Dec 2015]

### Product images:



Circular map for RG209766