

## Product datasheet for **RG209760**

### **WEE1 (NM\_003390) Human Tagged ORF Clone**

#### **Product data:**

Product Type:	Expression Plasmids
Product Name:	WEE1 (NM_003390) Human Tagged ORF Clone
Tag:	TurboGFP
Symbol:	WEE1
Synonyms:	WEE1A; WEE1hu
Mammalian Cell Selection:	Neomycin
Vector:	pCMV6-AC-GFP (PS100010)
E. coli Selection:	Ampicillin (100 ug/mL)



[View online »](#)

**ORF Nucleotide Sequence:**

>RG209760 representing NM\_003390  
 Red=Cloning site Blue=ORF Green=Tags(s)

TTTTGTAATACGACTCACTATAGGGCGGCCGGGAATTCGTCGACTGGATCCGGTACCGAGGAGATCTGCC  
 GCC**CGGATCGCC**

ATGAGTTCCTGAGCCGACAGCAGCCGCCACCCCGCGCCGGGGCGCCTGCACCTTGCAGCAGAG  
 AGCTGATCTTCTCGCCCTGCAGCGACTGTGAGGAGGAGGAAGAAGAGGAGGAGGAGGGCAGCGCCA  
 CAGCACCGGGGAGGACTCGGCCCTTCAAGAGCCGACTCGCCGCTGCCGCCCGCGGAGCCCCACGGAG  
 CCCGGGCCGAGCGCCGCTCGCCGGGCGGCCCGGGAGCCCCGCGAGCTGGAGGAGGACCTGT  
 TGCTGCCCGCGCCTGCCGGGCGGGACGAGGCGGGCGGTGGGCGGAGGGCGACTCGTGGGAGGAGGA  
 GGGCTTCGGCTCCTCGTCGCGGTCAAGTCGCCGGCGGCCCTACTTCTGGTAGCTCTTCTCGCCG  
 GTGCGCTGCGGCGGCCAGGAGATGCGTCGCCCGGGGTTCGGGGCGCGCCGGGCGGCAAGGCCGCC  
 GCTCGCCGCGGCCGACCACCCGGGCACCCGCCACACAAGACCTTCGCAAGCTGCGACTCTTCGACAC  
 CCCGCACACGCCCAAGAGTTTCTCTCAAAGCTCGGGGAATTGATTCAGCTCTGTTAACTCCGGGGT  
 AGTTCTCTCTTATGATACAGAAAAATCAGGAAAAAGGGAATTTGATGTGCGACAGACTCCTCAAGTGA  
 ATATTAATCCTTTACTCCGGATTCTTTGTTGCTTCACTCCTCAGGACAGTGTGCTGTAGAAAAGAGAAC  
 GTATTGGAATGATTCTGTGGTGAAGACATGGAAGCCAGTGATTATGAGCTTGAAGATGAAAAGACCT  
 GCTAAGAGAATACAATTAAGAAACAAATGAAAGTCCCGGTATACAACAGAAATTCATGAGCTAGAGA  
 AAATCGGCTCTGGAGAATTTGGTTCTGTATTAAGTGTGTGAAGAGGCTGGATGGATGCATTTATGCCAT  
 TAAGCGATCAAAAAGCCATTGGCGGGCTCTGTTGATGAGCAGAACGCTTTGAGAGAAGTATATGCTCAT  
 GCAGTCTTGGACAGCATTCTCATGTAGTTCGATATTTCTCTGCTGGGCGAGAAGATGATCATATGCTTA  
 TACAGAATGAATATTGTAATGGTGAAGTTTACTGATGCTATAAGTAAAACTACAGAATCATGATTA  
 CTTTAAAGAAGCAGAGTTGAAGGATCTCCTTTTCAAGTTGGCCGAGGCTTGAGGTATATTCATTCAATG  
 TCTTTGGTTCACATGGATATAAACCTAGTAATATTTTCAATATCTGAACCTCAATCCCAATGCTGCC  
 CTGAAGAAGGAGACGAAGATGATTGGGCATCCAACAAAGTTATGTTTAAATAGGTGATCTTGGGCATG  
 AACAGGATCTCCAGTCCACAAGTTGAAGAGGGCGATAGTCGTTTTCTTGCAATGAAGTTTACAGGAG  
 AATTATACCCATCTACAAAAGCAGATATTTTTCGCTTGCCTCACAGTGGTATGTGCTGCTGGTGTG  
 AACCTCTCCGAGAAATGGAGATCAATGGCATGAAATCAGACAGGGTAGATTACCTCGGATACCACAAGT  
 GCTTTCCCAAGAATTTACAGAGTTGCTAAAAGTTATGATTCATCCAGATCCAGAGAGAAGACCTTCAGCA  
 ATGGCACTGGTAAAGCATTTCAGTATTGCTGCTCCGCTTCTAGAAAGAGTGCAGAACAATTACGAATAGAAT  
 TGAAATGCCGAAAAGTTCAAAAATCACTTTTACAAAAGAAGTCAAGAAAGCACAGATGGCAAAAAGCTGC  
 AGCTGAGGAAAAGAGCACTTCTACTGACCGGATGGCCACTAGGTCCACCACCCAGAGTAATAGAATCT  
 CGACTTATTGAAAGAAAATGAACCGCTCTGTCAGCCTTACTATATAC

**ACGCGT**ACGCGGCCGCTCGAG - GFP Tag - GTTTAA

**Protein Sequence:**

>RG209760 representing NM\_003390  
 Red=Cloning site Green=Tags(s)

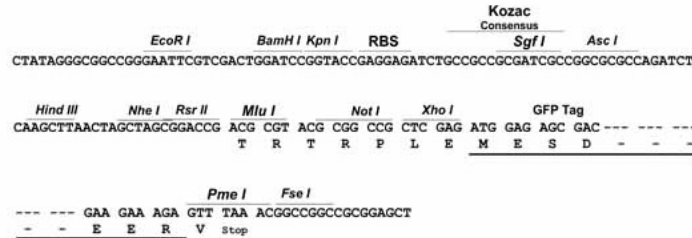
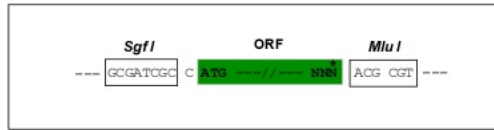
MSFLSRQQPPPPRRAGAACLTRQKLIIFSPCSDCEEEEEEEEEEGSGHSTGEDSAFQEPDSPLPPARSPT  
 PGPERRRSPGPAPGSPGELEEDLLLPACPGADEAGGGAEGDSWEEEGFGSSSPVKSPAAPYFLGSSFSP  
 VRCGGPGDASPRGCGARRAGEGRRSPRDHPGTPPHKTRKLRLLFDTPHTPKSLLSKARGIDSSSVKLRG  
 SSLFMDTEKSGKREFDVRQTPQVNINPFTPDSLHSSGQRRRKRTYWNDSGEDMEASDYELEDETRP  
 AKRITITENMKSRYTTEFHELEKIGSGEFGSVFKCVKRLDGCIIYAIKRSKPLAGSVDEQNALREYYAH  
 AVLQGHSHVRYFSAWAEDDHMLIQNEYCNGGSLADAI SENYRIMSIFYKEAELKDLLLQVGRGLRYIHS  
 SLVHMDIKPSNIFISRTSIPNAASEEGDEDDWASNKVMFKIGDLGHVTRI SSPQVEEGDSRFLANEVLQE  
 NYTHLPKADIFALALTVCAAGAELPRNGDQWHEIRQGLRPRIPQVLSQEFTELLKVMIHDPERRPSA  
 MALVKHSVLLSASRKSAEQLRIELNAEKFNLSLLQKELKKAQMAKAAAEERALFTDRMATRSTTQSNRTS  
 RLIGKMMNRSVSLTIY

**TRTRPLE** - GFP Tag - V

Restriction Sites: SgfI-MluI

Cloning Scheme:

Cloning sites used for ORF Shutting:



ACCN: NM\_003390

ORF Size: 1938 bp

OTI Disclaimer: The molecular sequence of this clone aligns with the gene accession number as a point of reference only. However, individual transcript sequences of the same gene can differ through naturally occurring variations (e.g. polymorphisms), each with its own valid existence. This clone is substantially in agreement with the reference, but a complete review of all prevailing variants is recommended prior to use. [More info](#)

OTI Annotation: This clone was engineered to express the complete ORF with an expression tag. Expression varies depending on the nature of the gene.

Components: The ORF clone is ion-exchange column purified and shipped in a 2D barcoded Matrix tube containing 10ug of transfection-ready, dried plasmid DNA (reconstitute with 100 ul of water).

Reconstitution Method:

1. Centrifuge at 5,000xg for 5min.
2. Carefully open the tube and add 100ul of sterile water to dissolve the DNA.
3. Close the tube and incubate for 10 minutes at room temperature.
4. Briefly vortex the tube and then do a quick spin (less than 5000xg) to concentrate the liquid at the bottom.
5. Store the suspended plasmid at -20°C. The DNA is stable for at least one year from date of shipping when stored at -20°C.

RefSeq: [NM\\_003390.2](#), [NP\\_003381.1](#)

RefSeq Size: 4232 bp

RefSeq ORF: 1941 bp

Locus ID: 7465

UniProt ID: [P30291](#)

**Cytogenetics:** 11p15.4

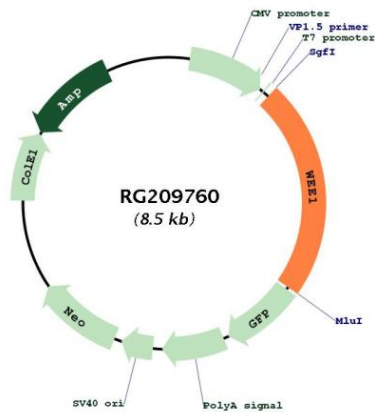
**Domains:** pkinase, TyrKc, S\_TKc

**Protein Families:** Druggable Genome, Protein Kinase, Stem cell - Pluripotency

**Protein Pathways:** Cell cycle

**Gene Summary:** This gene encodes a nuclear protein, which is a tyrosine kinase belonging to the Ser/Thr family of protein kinases. This protein catalyzes the inhibitory tyrosine phosphorylation of CDC2/cyclin B kinase, and appears to coordinate the transition between DNA replication and mitosis by protecting the nucleus from cytoplasmically activated CDC2 kinase. [provided by RefSeq, Jul 2008]

**Product images:**



Circular map for RG209760