

## Product datasheet for **RG209733**

### BMF (NM\_001003940) Human Tagged ORF Clone

#### Product data:

**Product Type:** Expression Plasmids  
**Product Name:** BMF (NM\_001003940) Human Tagged ORF Clone  
**Tag:** TurboGFP  
**Symbol:** BMF  
**Mammalian Cell Selection:** Neomycin  
**Vector:** pCMV6-AC-GFP (PS100010)  
**E. coli Selection:** Ampicillin (100 ug/mL)  
**ORF Nucleotide Sequence:** >RG209733 representing NM\_001003940  
 Red=Cloning site Blue=ORF Green=Tags(s)

TTTTGTAATACGACTCACTATAGGGCGGCCGGGAATTCGTCGACTGGATCCGGTACCGAGGAGATCTGCC  
 GCC**CGATCGCC**

ATGGAGCCATCTCAGTGTGTGGAGGAGCTGGAGGATGATGTGTTCCAACCAGAGGATGGGGAGCCGGTGA  
 CCCAACCCGGGAGCTTGCTCTGCTGACCTGTTTGCCAGAGCCTACTGGACTGCCCCCTCAGCCGACT  
 TCAGCTCTTCCCTCTCACCCACTGCTGTGGCCCTGGCCTTCGACCCACCAGCCAGGAAGACAAAGCTACC  
 CAGACTCTCAGCCAGCCTCCCCAGCCAAGGTGTCATGCTGCCTTGTTGGGTGACTGAGGAACCCAGC  
 GACTCTTTTATGGCAATGCTGGCTATCGGCTTCCTCCCTGCCAGTTTCCAGCAGTCTTGCCCATTTGG  
 GGAGCAGCCCCCGAAGGGCAGTGGCAACATCAAGCAGAGGTACAGATTGCCCGAAAGCTTCAGTGCAAT  
 GCAGACCAGTTCCACCGCTTCATGTGCAGCAACACCAGCAGAACCAAAATCGTGTGTGGTGGCAGATCC  
 TCCTCTTCTGCACAACCTTGCTTTGAATGGAGAAGAGAACAGGAACGGGGCAGGCCCTAGG

**ACGCGT**ACGCGGCCGCTCGAG - GFP Tag - GTTTAA

**Protein Sequence:** >RG209733 representing NM\_001003940  
 Red=Cloning site Green=Tags(s)

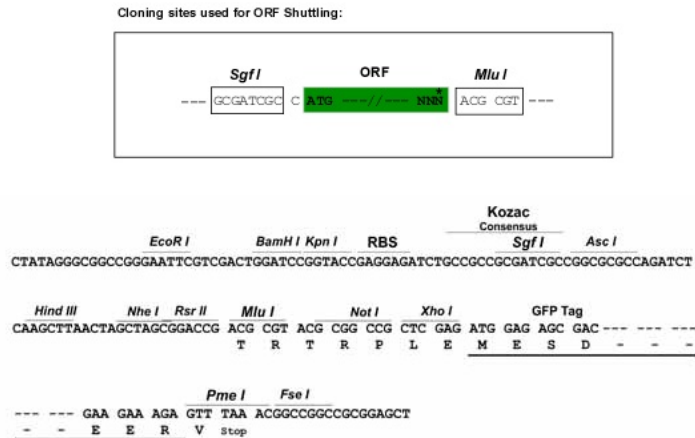
MEPSQCVEELEDVDFQPEDGEPVTQPGSLLSADLFAQSLLDLDCPLSRLQLFPLTHCCGPGLRPTSQEDKAT  
 QTLSPASPSQGVMLPCGVTEEPQRLFYGNAGYRLPLPASFPVLPVIGEQPPEGQWQHQAQEVQIARKLQCI  
 ADQFHRLHVQHQNQNRVWQIILLFLHNLALNGEENRNGAGPR

**TRTRPLE** - GFP Tag - V

**Restriction Sites:** SgfI-MluI



[View online »](#)

**Cloning Scheme:**


**ACCN:** NM\_001003940

**ORF Size:** 552 bp

**OTI Disclaimer:** The molecular sequence of this clone aligns with the gene accession number as a point of reference only. However, individual transcript sequences of the same gene can differ through naturally occurring variations (e.g. polymorphisms), each with its own valid existence. This clone is substantially in agreement with the reference, but a complete review of all prevailing variants is recommended prior to use. [More info](#)

**OTI Annotation:** This clone was engineered to express the complete ORF with an expression tag. Expression varies depending on the nature of the gene.

**Components:** The ORF clone is ion-exchange column purified and shipped in a 2D barcoded Matrix tube containing 10ug of transfection-ready, dried plasmid DNA (reconstitute with 100 ul of water).

**Reconstitution Method:**

1. Centrifuge at 5,000xg for 5min.
2. Carefully open the tube and add 100ul of sterile water to dissolve the DNA.
3. Close the tube and incubate for 10 minutes at room temperature.
4. Briefly vortex the tube and then do a quick spin (less than 5000xg) to concentrate the liquid at the bottom.
5. Store the suspended plasmid at -20°C. The DNA is stable for at least one year from date of shipping when stored at -20°C.

**RefSeq:** [NM\\_001003940.2](#)

**RefSeq Size:** 4700 bp

**RefSeq ORF:** 555 bp

**Locus ID:** 90427

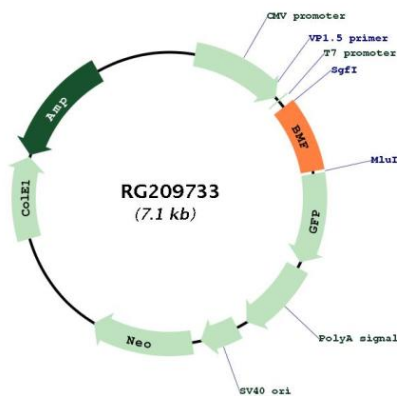
UniProt ID: [Q96LC9](#)

Cytogenetics: 15q15.1

Protein Families: Druggable Genome

**Gene Summary:** The protein encoded by this gene belongs to the BCL2 protein family. BCL2 family members form hetero- or homodimers and act as anti- or pro-apoptotic regulators that are involved in a wide variety of cellular activities. This protein contains a single BCL2 homology domain 3 (BH3), and has been shown to bind BCL2 proteins and function as an apoptotic activator. This protein is found to be sequestered to myosin V motors by its association with dynein light chain 2, which may be important for sensing intracellular damage and triggering apoptosis. Alternatively spliced transcript variants encoding different isoforms have been identified. [provided by RefSeq, Jul 2008]

**Product images:**



Circular map for RG209733