

## Product datasheet for **RG209729**

### Hormone sensitive lipase (LIPE) (NM\_005357) Human Tagged ORF Clone

#### Product data:

Product Type:	Expression Plasmids
Product Name:	Hormone sensitive lipase (LIPE) (NM_005357) Human Tagged ORF Clone
Tag:	TurboGFP
Symbol:	Hormone sensitive lipase
Synonyms:	AOMS4; FPLD6; HSL; LHS; REH
Mammalian Cell Selection:	Neomycin
Vector:	pCMV6-AC-GFP (PS100010)
E. coli Selection:	Ampicillin (100 ug/mL)
ORF Nucleotide Sequence:	>RG209729 representing NM_005357 Red=Cloning site Blue=ORF Green=Tags(s)

TTTTGTAATACGACTCACTATAGGGCGGCCGGAATTCGTCGACTGGATCCGGTACCGAGGAGATCTGCC  
GCC**CGATCGCC**

ATGGAGCCAGGTTCTAAGTCAGTGTCTAGGTCAGACTGGCAACCTGAACACACCAGAGGCTATAACCC  
CGCTAGAGCCTGGGCCAGAAAAGACACCCATAGCCAGCCAGAATCGAAGACTCTGCAGGGATCCAATAC  
CCAACAGAAGCCTGCTTCAAACCAAGACCCCTCACCCAGCAGGAGACCCCTGCACAACATGATGCTGAA  
TCCCAGAAGAACCTAGAGCCCAACAAAATCTGCTTACAAGAGGAATTTCTTGCCCCACAGAAGCCCG  
CACCACAGCAATCACCTTACATCCAAGGGTGTCTCACTCAACAGGAAGCTGCCTCCCAGCAGGGACC  
TGGGCTAGGAAAAGAATCTATAACTCAACAGGAGCCAGCATTGAGACAAAAGACATGTAGCCAGCCAGGG  
CCTGGGCCAGGAGAGCCACCTCCAGCTCAACAAGAAGCTGAATCAACACCTGCGGCCAGGCTAAACCTG  
GAGCCAAAAGGGAGCCATCTGCCCGACTGAATCTACGTCCCAAGAGACACCTGAACAGTCAGACAAGCA  
AACACGCCAGTCCAGGGAGCCAAATCCAAGCAGGGATCTTTGACAGAGCTGGGATTTCTAACAAAACCT  
CAGGAATATCCATACAGCGATCAGCCCTAGAGTGGAAGGCATTTCTGAGTGGGTCACAGATTCTGAGT  
CAGAATCAGATGTGGGATCATCTTCAGACACAGATTCTCCAGCCACGATGGGTGGAATGGTGGCCAGGG  
AGTGAAGCTAGGCTTCAAAGGAAAATCTGGTTATAAAGTGATGTCAGGATACAGTGGGACGTCGCCACAT  
GAGAAAACCAAGTCTCGGAATCACAGACTACCAGGATACAGCCTCAAGGCTCATCCACAACATGGACC  
TGCGCACAATGACACAGTCGCTGGTGACTCTGGCGGAGGACAACATAGCCTTCTTCTCGAGCCAGGGTCC  
TGGGAAAACGGCCAGCGCTGTCAAGCGTTTTTGGCGGTGTACGGGAGCAGGCGCTGGGCTGGAGCCG  
GCCCTGGGCCGCTGCTGGGTGTGGCGACCTCTTTGACCTGGACCCAGAGACACCGGCCAACGGGTACC  
GCAGCCTAGTGCACACAGCCCGCTGCTGCCTGGCGCACCTCCTGCACAAAATCCCGCTATGTGGCCTCCAA  
CCGCCGACGATCTTCTCCGACACAGCCACAACCTGGCCGAGCTGGAGGCTACCTGGCTGCCCTCACC  
CAGCTCCGCGCTCTGGTCTACTACGCCAGCGCTGCTGGTTACCAATCGGCCGGGGTACTCTTCTTTG  
AGGGCGACGAGGGGCTCACCGCCGACTTCTCCGGGAGTATGTCAGCTGCATAAGGGATGCTTCTATGG  
CCGCTGCCTGGGCTTCCAGTTCACGCCTGCCATCCGGCATTCTGCAGACCATCTACATTGGGCTGGT



[View online »](#)

TCCTTCGGGGAGCACTACAAACGCAACGAGACAGGCCTCAGTGTGGCCGCCAGCTCTCTTCCACCAGCG  
 GCCGCTTGGCCATCGACCCCGAGCTGCGTGGGGCTGAGTTTGGCGGATCACACAGAACCTGGACGTGCA  
 TTCTGGAAGCCTTCTGGAACATCACCGAGATGGAAGTGCTATCGTCTCTGGCCAAATGGCATCGGCC  
 ACCGTGAGGGTAAGCCGCTGCTCAGCCTGCCACCCGAAGCCTTGGAGATGCCACTGACTGCCGACCCCA  
 CGCTCACGGTACCATCTACCCCCACTGGCCACACAGGCCCTGGGCCCGTCTCGTCAAGGCTCATCTC  
 CTGTGACCTGCGTGAAGGACAGGACAGTGAAGGCTCAGCAGCCTGATAAAGTCCAACGGCCAACGGGAGC  
 CTGGAGCTGTGGCCGCGCCCCAGCAGGACCCCGCTCGCGGTCCTGATAGTGCACCTCCACGGCGGTG  
 GCTTTGTGGCCAGACCTCCAGATCCCACGAGCCCTACCTCAAGAGCTGGGCCAGGAGCTGGGCGCCCC  
 CATCATCTCCATCGACTACTCCCTGGCCCTGAGGCCCTTCCCCCGTGCCTGGAGGAGTGCTTCTTC  
 GCCTACTGCTGGGCCATCAAGCACTGCGCCCTCCTTGGCTCAACAGGGGAACGAATCTGCCTTGGGGGG  
 ACAGTGCAGGCGGGAACCTCTGCTTACCGTGGCTCTTGGGCGAGCAGCCTACGGGGTGGGGTCCAGA  
 TGGCATCATGGCAGCCTACCCGGCCACAATGCTGCAGCCTGCCGCTCTCCCTCCCGCTGCTGAGCCTC  
 ATGGACCCTTGTGCCCTCAGTGTCTCCAAGTGTGCAGCGCCTATGCTGGTCAAAGACGGAGG  
 ACCACTCAAACAGACCAGAAAGCCCTCGGCATGATGGGGCTGGTGGCGGGGACACAGCCTGCTCCT  
 CCGAGACTCCGCTGGGTGCCTCCTCATGGCTCAACTCCTTCTGGAGTTAAGTGGGCGCAAGTCCAG  
 AAGATGTCGGAGCCCATAGCAGAGCCGATGCGCCGCAAGTGTCTGAAGCAGCACTGGCCAGCCCAAGG  
 GCCCACTGGGCACGGATTCCCTCAAGAACCTGACCCTGAGGGACTTGAGCCTGAGGGGAAACTCCGAGAC  
 GTCGTCGGACACCCCGAGATGTCGCTGTGAGTGCAGTGCAGACTTAGCCCTCCACACCTCCGATGTCAAC  
 TTCTTATTACCACCTGAGGATGCAGGGGAAGAGGCTGAGGCCAAAAATGAGCTGAGCCCCATGGACAGAG  
 GCCTGGGCGTCCGTGCCGCTTCCCCGAGGGTTTCCACCCCGACGCTCCAGCCAGGGTCCACACAGAT  
 GCCCTTACTCCTCACCCATAGTCAAGAACCCTTCAATGTCGCCGCTGCTGGCACCACAGCATGCTC  
 AAGAGCCTGCCACCTGTGCACATCGTGGCGTGCAGCCTGGACCCCATGCTGGACGACTCGGTATGCTCG  
 CGCGGCGACTGCGCAACTGGGCCAGCCGCTGACGCTGCGCGTGGTGGAGGACCTGCCGACGGCTCCT  
 GACCCTAGCGGCGCTGTGCCGCGAGCGCCAGGCCGAGAGCTGTGCGTGGAGCGCATCCGCCTCGTC  
 CTCACTCTCCCGCGGAGCCGGCCGAGCGGGGAGACGGGGGCTGCGGGGTAGACGGGGGCTGCGGGG  
 GCGGACAC

ACGCGTACGCGGCCGCTCGAG - GFP Tag - GTTTAA

**Protein Sequence:**

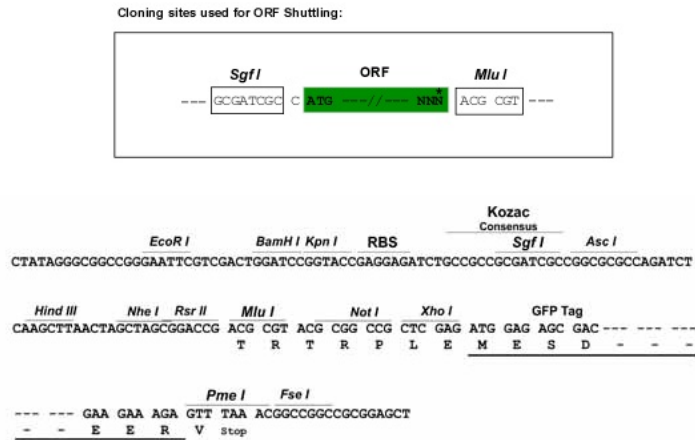
>RG209729 representing NM\_005357  
 Red=Cloning site Green=Tags(s)

MEPGSKSVSRSDWQPEPHQRPIITPLEPGPEKTPIAQPESKTLQGSNTQQKPNQRPQTQQETPAQHDAE  
 SQKEPRAQQKSASQEEFLAPQKAPQQSPYIQRVLLTQQEASQQGPGLGKESITQQEPALRQRHVAQPG  
 PGPGEPPPAQQEAEESTPAAQAKPGAKREPSAPTESTSQETPEQSDKQTPVQGAQSKQGSLELGFGLTKL  
 QELSIQRSALWKALSEWVTDSESESDVGSSTDSPTMGMVAQGVKLGFKGKSGYKVMMSGYSGTSPH  
 EKTSAARNHRHYQDTASRLIHNMDLRTMTQSLVTLAEDNIAFFSSQGPGETAQRLSGVFAGVREQALGLEP  
 ALGRLLVGAHLFDLDPETPANGYRSLVHTARCCLAHLLHKSRYVASNRRSIFFRSHNLAELEAYLAALT  
 QLRALVYYAQRLLVTNRPGVLFEGDEGLTADFLREYVTLHKGFYGRCLGFQFPAIRPFLQTIYIGLV  
 SFGHEHYKRNETGLSVAASSLFTSGRFAIDPELGAEFERITQNLVHFWKAFWNITEMEVLSSLANMASA  
 TVRVSRLLSLPPEAFEMPLTADPTLTVTISPPLAHTGPGPVLVRLISCDLREGQDSEELSSLIKSNGQRS  
 LELWPRPQQAPRSRLIVHFHGGGFVAQTSRSHEPYLKSWAQELGAPIISIDYSLAPEAPFPRALEECCF  
 AYCWAIKHCALLGSTGERICLAGDSAGGNLCFTVALRAAAYGVRVPDGMMAAYPATMLQPAASPSRLLSL  
 MDPLLPVSVLTKCVSAYAGAKTEDHSNSDQKALGMMGLVRRDALLLRDFRLGASSWLNFLLELGRKSQ  
 KMSEPIAEPMRRSVSEALAQPQGPLGTDLSLKNLTLRDLRLRGNSETSSDTPMSLSAETLSPSTPSDVN  
 FLLPPEDAGEEAEAKNELSPMDRGLGVRAAFPEGFHPRRSSQGATQMPLYSSPIVKNPFMSPLLAPDSML  
 KSLPPVHIVACALDPMLDDSVMLARRLRNLGQPVTLRVVEDLPHGFLTLAALCRETRQAELCVERIRLV  
 LTPPAGAGPSGETGAAGVDGGCGGRH

TRTRPLE - GFP Tag - V

**Restriction Sites:**

Sgfl-MluI

**Cloning Scheme:**


**ACCN:** NM\_005357

**ORF Size:** 3228 bp

**OTI Disclaimer:** The molecular sequence of this clone aligns with the gene accession number as a point of reference only. However, individual transcript sequences of the same gene can differ through naturally occurring variations (e.g. polymorphisms), each with its own valid existence. This clone is substantially in agreement with the reference, but a complete review of all prevailing variants is recommended prior to use. [More info](#)

**OTI Annotation:** This clone was engineered to express the complete ORF with an expression tag. Expression varies depending on the nature of the gene.

**Components:** The ORF clone is ion-exchange column purified and shipped in a 2D barcoded Matrix tube containing 10ug of transfection-ready, dried plasmid DNA (reconstitute with 100 ul of water).

**Reconstitution Method:**

1. Centrifuge at 5,000xg for 5min.
2. Carefully open the tube and add 100ul of sterile water to dissolve the DNA.
3. Close the tube and incubate for 10 minutes at room temperature.
4. Briefly vortex the tube and then do a quick spin (less than 5000xg) to concentrate the liquid at the bottom.
5. Store the suspended plasmid at -20°C. The DNA is stable for at least one year from date of shipping when stored at -20°C.

**RefSeq:** [NM\\_005357.2](#), [NP\\_005348.2](#)

**RefSeq Size:** 3806 bp

**RefSeq ORF:** 3231 bp

**Locus ID:** 3991

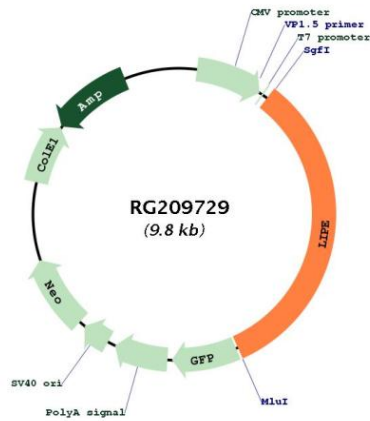
**UniProt ID:** [Q05469](#)

Cytogenetics: 19q13.2

Protein Pathways: Insulin signaling pathway

Gene Summary: The protein encoded by this gene has a long and a short form, generated by use of alternative translational start codons. The long form is expressed in steroidogenic tissues such as testis, where it converts cholesteryl esters to free cholesterol for steroid hormone production. The short form is expressed in adipose tissue, among others, where it hydrolyzes stored triglycerides to free fatty acids. [provided by RefSeq, Jul 2008]

**Product images:**



Circular map for RG209729