

Product datasheet for **RG209701**

Influenza Virus NS1A Binding Protein (IVNS1ABP) (NM_006469) Human Tagged ORF Clone

Product data:

Product Type:	Expression Plasmids
Product Name:	Influenza Virus NS1A Binding Protein (IVNS1ABP) (NM_006469) Human Tagged ORF Clone
Tag:	TurboGFP
Symbol:	Influenza Virus NS1A Binding Protein
Synonyms:	ARA3; FLARA3; HSPC068; IMD70; KLHL39; ND1; NS-1; NS1-BP; NS1BP
Mammalian Cell Selection:	Neomycin
Vector:	pCMV6-AC-GFP (PS100010)
E. coli Selection:	Ampicillin (100 ug/mL)



[View online »](#)

ORF Nucleotide Sequence:

>RG209701 representing NM_006469
 Red=Cloning site Blue=ORF Green=Tags(s)

TTTTGTAATACGACTCACTATAGGGCGGCCGGAATTCGTCGACTGGATCCGGTACCGAGGAGATCTGCC
 GCC**CGGATCGCC**

ATGATTCCCAATGGATATTTGATGTTTGAGGATGAAAATTTATTGAGTCTTCTGTTGCCAAATTAATG
 CCCTGAGGAAAAGTGGCCAGTTCGTGATGTTTCGACTTCAGGCTGTGGCCATGAAATGTTAGCACACAG
 AGCAGTGTAGCTTGGCTGCAGTCCCTATTTATTTGAAATCTTTAATAGTGATAGTGATCCTCATGGAATT
 TCTCACGTTAAATTTGATGATCTCAATCCAGAAGCTGTTGAAGTCTTGTGAATTATGCCTACACTGCTC
 AGTTGAAAGCAGATAAGGAATTGGTAAAAGATGTTTATTCTGCAGCAAAAAGCTGAAGATGGATCGAGT
 AAAGCAGGTTTGTGGTATTATTTACTGTCTAGAATGGATGTTACCAGCTGCATCTTACCAGAAATTTT
 GCAAGTTGATGGGAGACTCCCGTTTGTGAATAAGGTTGATGCTTATATTCAGGAGCATTGTTACAAA
 TTTCTGAAGAGGAGGAGTTTCTAAGCTTCCAAGGCTAAAGTTGGAGGTAATGCTTGAAGATAATGTTTG
 CTTGCCAGCAATGGCAAATTATATACAAAGGTAATCAACTGGGTGCAGCTAGCATCTGGGAGAATGGA
 GACAGTCTGGAAGAGCTGATGGGAGAGGTTCAAACCTTGTACTACTCAGCTGATCACAAAGCTGCTTGATG
 GGAACCTACTAGATGGACAGGCTGAGGTGTTTGGCAGTGTGATGACCACATTCAGTTTGTGCAGAAAA
 GCCACCACGTGAGAAATGGCCATAAGCAGATAAGTAGCAGTTCAACTGGATGTCTCTCTTCTCCAAATGCT
 ACAGTACAAAGCCCTAAGCATGAGTGGAAAATCGTTGCTTCAGAAAAGACTTCAAATAACACTTACTTGT
 GCCTGGCTGTGCTGGATGGTATATTCTGTGTCATTTTTCTTCATGGGAGAAAACAGCCACAGAGCTCACC
 AACAGTACTCCAAACTAAGTAAGAGTTAAGCTTTGAGATGCAACAAGATGAGCTAATCGAAAAGCCC
 ATGCTCTCTATGCAGTACGCACGATCTGGTCTGGGAACAGCAGAGATGAATGGCAAACCTCATAGCTGCAG
 GTGGCTATAACAGAGAGGAATGTCTTCGAACAGTCGAATGCTATAATCCACATACAGACTCTGGTCTCT
 TCTTGCTCCCATGAGAACAACCAAGAGCCCGATTTCAAATGGCTGTACTCATGGCCAGCTCTATGTGGTA
 GGTGGATCAAATGGCCTACTCAGATGACCTGAGTTGTGGAGAGATGTATGATTCAAACATAGATGACTGGA
 TTCCTGTTCCAGAATTGAGAATAACCGTTGTAATGCAGGAGTGTGTGCTCTGAATGAAAAGTTATACAT
 CGTTGGTGGCTCTGATCCATATGGTCAAAGGACTGAAAAATTGTGATGATTTTATGATCCTGTAACAAA
 TTGTGGACAAGCTGTGCCCTCTAACATTCGGAGACACCAGTCTGCAGTCTGTGAGCTTGGTGGTTATT
 TGTACATAATCGGAGGTGCAGAATCTTGAATTTGCTGAACACAGTAGAACGATAACAATCCTGAAAAATA
 TACCTGGACTTTAATTGCACCCATGAATGTGGCTAGGCGAGGAGCTGGAGTGGCTGTTCTAATGAAAA
 CTGTTTGTATGTGGTGGCTTTGATGGTTCTCATGCCATCAGTTGTGTGGAATGTATGATCCAATAGAA
 ATGAATGGAAGATGATGGGAAATATGACTTCACCAAGGAGCAATGCTGGGATTGCAACTGTAGGGAACAC
 CATTTATGCAGTGGGAGGATTCCATGGCAATGAATTTCTGAATACGGTGGAAAGTCTATAACCTTGAGTCA
 AATGAATGGAGCCCTATACAAAGATTTTCCAGTTT

ACGCGTACGCGGCCGCTCGAG - GFP Tag - GTTTAA

Protein Sequence:

>RG209701 representing NM_006469
 Red=Cloning site Green=Tags(s)

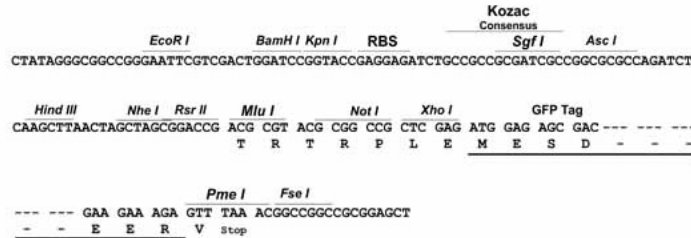
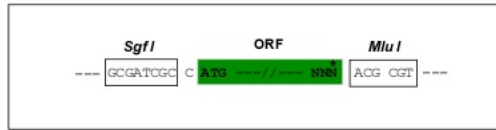
MIPNGYLMFEDENFIESSVAKLNALRKSGQFCDVRLQVCGHEMLAHRVLAACSPYLFEIFNSDSDPHGI
 SHVKFDDLNPEAVEVLLNYAYTAQLKADKELVKDVYSAKKLKMDRVKQVCGDYLLSRMDVTSCISYRNF
 ASCMGDSRLLNKVDAYIQEHLQLISEEEFLKLPRLKLEVMLEDNVCLPSNGKLYTKVINWVQRSIWENG
 DSLEELMGEVQTLYYSAADHKLLDGNLLDQAEVFGSDDDHIFVQKPPRENGHKQISSSSTGCLSSPNA
 TVQSPKHEWKIVASEKTSNNTYLCLAVLDGIFCVIFLHGRNSPQSPTSTPKLSKLSFEMQQDELIEKP
 MSPMQYARSGLTAEMNGKLIAGGYNREECLRTVECYNPHTDHSFLAPMRTPRARFQMAVLMGQLYVV
 GGSNGHSDDLSCGEMYDSNIDDWIPPELRTNRCNAGVICALNGKLYIVGGSDPYGQKGLKNCDVDFPVTK
 LWTSCAPLNIRRHQSAVCELGGLYIIGGAESWNCLNTVERYNPENNTWTLIAPMNVARRGAVAVLNGK
 LFVCGGFDGSHAISCVEMYDPTRNEWKMMGNMTPRSNAGIATVGNTIYAVGGFDGNEFLNTVEVYNLES
 NEWSPYTKIFQF

TRTRPLE - GFP Tag - V

Restriction Sites: SgfI-MluI

Cloning Scheme:

Cloning sites used for ORF Shutting:



ACCN: NM_006469

ORF Size: 1926 bp

OTI Disclaimer: The molecular sequence of this clone aligns with the gene accession number as a point of reference only. However, individual transcript sequences of the same gene can differ through naturally occurring variations (e.g. polymorphisms), each with its own valid existence. This clone is substantially in agreement with the reference, but a complete review of all prevailing variants is recommended prior to use. [More info](#)

OTI Annotation: This clone was engineered to express the complete ORF with an expression tag. Expression varies depending on the nature of the gene.

Components: The ORF clone is ion-exchange column purified and shipped in a 2D barcoded Matrix tube containing 10ug of transfection-ready, dried plasmid DNA (reconstitute with 100 ul of water).

Reconstitution Method:

1. Centrifuge at 5,000xg for 5min.
2. Carefully open the tube and add 100ul of sterile water to dissolve the DNA.
3. Close the tube and incubate for 10 minutes at room temperature.
4. Briefly vortex the tube and then do a quick spin (less than 5000xg) to concentrate the liquid at the bottom.
5. Store the suspended plasmid at -20°C. The DNA is stable for at least one year from date of shipping when stored at -20°C.

RefSeq: [NM_006469.4](#), [NP_006460.2](#)

RefSeq Size: 4205 bp

RefSeq ORF: 1929 bp

Locus ID: 10625

UniProt ID: [Q9Y6Y0](#)

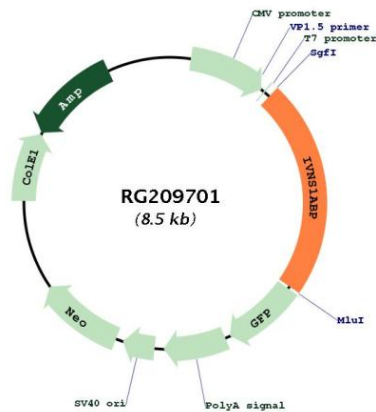
Cytogenetics: 1q25.3

Domains: BTB, Kelch

Protein Families: Transcription Factors

Gene Summary: Involved in many cell functions, including pre-mRNA splicing, the aryl hydrocarbon receptor (AHR) pathway, F-actin organization and protein ubiquitination. Plays a role in the dynamic organization of the actin skeleton as a stabilizer of actin filaments by association with F-actin through Kelch repeats (By similarity). Protects cells from cell death induced by actin destabilization (By similarity). Functions as modifier of the AHR/Aryl hydrocarbon receptor pathway increasing the concentration of AHR available to activate transcription (PubMed:16582008). In addition, functions as a negative regulator of BCR(KLHL20) E3 ubiquitin ligase complex to prevent ubiquitin-mediated proteolysis of PML and DAPK1, two tumor suppressors (PubMed:25619834). Inhibits pre-mRNA splicing (in vitro) (PubMed:9696811).[UniProtKB/Swiss-Prot Function]

Product images:



Circular map for RG209701