

Product datasheet for **RG209666**

MANEL (MANEAL) (NM_001031740) Human Tagged ORF Clone

Product data:

Product Type: Expression Plasmids
Product Name: MANEL (MANEAL) (NM_001031740) Human Tagged ORF Clone
Tag: TurboGFP
Symbol: MANEL
Mammalian Cell Selection: Neomycin
Vector: pCMV6-AC-GFP (PS100010)
E. coli Selection: Ampicillin (100 ug/mL)
ORF Nucleotide Sequence: >RG209666 representing NM_001031740
 Red=Cloning site Blue=ORF Green=Tags(s)

TTTTGTAATACGACTCACTATAGGGCGGCCGGAATTCGTCGACTGGATCCGGTACCGAGGAGATCTGCC
 GCC**CGATCGCC**

ATGGCCCGGGCGGGCGCCGCGCCTGCATCGCTCTGTTCTGGTGTCTCTTCGCCTTCGGCACCTCA
 TGGGTCTGCGCACGCTCAAGGCTCCGGACGACTCCCGCGCTGGGCCCGGGCTGGAGCTGGCGCCCTT
 TGAGCGACGCCAGAGGGGGCCCCGCGCCCGTGCCAGGGCCCCGGCAGCCCTGCCGCGCCGCCCGG
 CCGCCCGCGCCCGCCCGCACCGCGGACCTGGCGGCTCCCCTGGCGCGCACCCGGAGCCGAGCCCG
 CCCCCGTGCAGAGCCTGCGCGTCTACTCGGACCTGCACGCTTCTACTACTCGTGTACGGGAGCCCGG
 GCGGAGGGCCACTACATTCACTGGGACCAGTCATGGTGCCGCACTGGGACCCCAAGATCTCGGCCAGC
 TACCCCGCGGCCGCCACAGCCCCCAGACGACTTGGGCTCCAGCTTCTACCCGGAGCTGGGCCCCTACA
 GCTCCCGGACCCGAAGTGCTGCGGGAGCATATGACCCAGCTCAAGGAAGCCGCATCGGCTCTGGT
 CCTGTCTGGTACCCACCTGGCATGGCTGATGATAACGGGGAGCCCTCAGATGACCTGGTCCCGCCATT
 CTGGACACCGCCATCAGTACAGCATCCAGGTGGCCTCCACATCCAACCCTACAAGGGCCGGGATGACA
 TCACTGTACATGACAACATCAAGTACATCATTGACACAACCTGAAAGCTG

ACGCGTACGCGGCCGCTCGAG - GFP Tag - GTTTAA

Protein Sequence: >RG209666 representing NM_001031740
 Red=Cloning site Green=Tags(s)

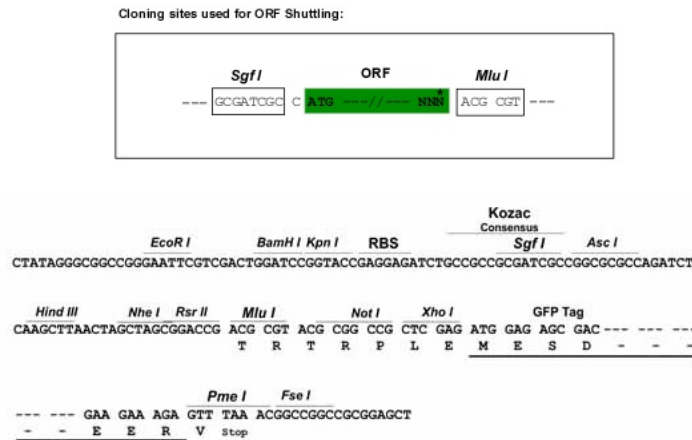
MARRRRRACIALFLVLLFAFGTLMGLRTLKAPDGLPALGPGLELAPFERRPEGAPAPAARAPAAPAAPPP
 PPPPPRTADPGGSPGAPAEAEAPVQSLRVYSDLHAFYYSWYGSPPREGHYIHWDHVMVPHWDPKISAS
 YPRGRHSPPDDLGSFYPELGPYSSRDPEVLREHMTQLKEAAIGVLVLSWYPPGMADDNGEPSDDLVP
 LDAHQYSIQVAFHIQPYKGRDDITVHDNIKIYIIDTTGKL

TRTRPLE - GFP Tag - V



Restriction Sites: SgfI-MluI

Cloning Scheme:



ACCN: NM_001031740

ORF Size: 750 bp

OTI Disclaimer: The molecular sequence of this clone aligns with the gene accession number as a point of reference only. However, individual transcript sequences of the same gene can differ through naturally occurring variations (e.g. polymorphisms), each with its own valid existence. This clone is substantially in agreement with the reference, but a complete review of all prevailing variants is recommended prior to use. [More info](#)

OTI Annotation: This clone was engineered to express the complete ORF with an expression tag. Expression varies depending on the nature of the gene.

Components: The ORF clone is ion-exchange column purified and shipped in a 2D barcoded Matrix tube containing 10ug of transfection-ready, dried plasmid DNA (reconstitute with 100 ul of water).

Reconstitution Method:

1. Centrifuge at 5,000xg for 5min.
2. Carefully open the tube and add 100ul of sterile water to dissolve the DNA.
3. Close the tube and incubate for 10 minutes at room temperature.
4. Briefly vortex the tube and then do a quick spin (less than 5000xg) to concentrate the liquid at the bottom.
5. Store the suspended plasmid at -20°C. The DNA is stable for at least one year from date of shipping when stored at -20°C.

RefSeq: [NM_001031740.2](#), [NP_001026910.1](#)

RefSeq Size: 2581 bp

RefSeq ORF: 753 bp

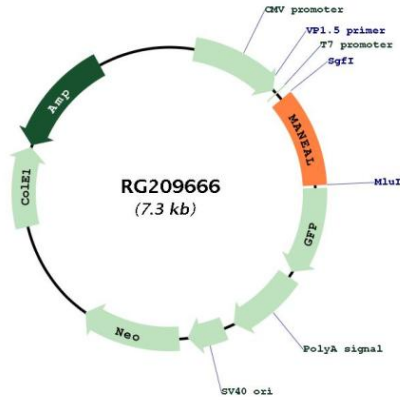
Locus ID: 149175

UniProt ID: [Q5VSG8](#)

Cytogenetics: 1p34.3

Protein Families: Transmembrane

Product images:



Circular map for RG209666