

Product datasheet for **RG209650**

OTUB2 (NM_023112) Human Tagged ORF Clone

Product data:

Product Type:	Expression Plasmids
Product Name:	OTUB2 (NM_023112) Human Tagged ORF Clone
Tag:	TurboGFP
Symbol:	OTUB2
Synonyms:	C14orf137; OTB2; OTU2
Mammalian Cell Selection:	Neomycin
Vector:	pCMV6-AC-GFP (PS100010)
E. coli Selection:	Ampicillin (100 ug/mL)
ORF Nucleotide Sequence:	>RG209650 representing NM_023112 Red=Cloning site Blue=ORF Green=Tags(s)

TTTTGTAATACGACTCACTATAGGGCGGCCGGAATTCGTCGACTGGATCCGGTACCGAGGAGATCTGCC
GCC**CGATCGCC**

ATGAGTGAACATCTTTCAACCTAATATCAGAAAAATGTGACATTCTATCCATTCTTCGGGACCATCCTG
AAAACAGGATTTACGGAGGAAAATCGAGGAACCTCAGCAAAGGTTACCGCCATCCGCAAGACCAAAGG
GGATGGGAAGTCTTCTACAGGGCCTTGGGCTATTCTACCTGGAGTCCCTGCTGGGAAGAGCAGGGAG
ATCTTCAAGTTCAAAGAACGCGTACTGCAGACCCAAATGACCTTCTGGCTGCTGGCTTTGAGGAGCACA
AGTTCAGAACTTCTTCAATGCTTTTTACAGTGTGGTGGAACTGGTAGAGAAGGACGGCTCAGTGTCCAG
CCTGCTGAAGGTGTTCAACGACCAGAGTGCCTCGGACCACATCGTGCAGTTCCTGCGCCTGCTCAGTGC
GCCTTCATCAGGAACCGAGCAGACTTCTCCGGCACTTCATTGATGAGGAGATGGACATCAAGACTTCT
GCACTCACGAAGTAGAGCCCATGGCCACGGAGTGTGACCACATCCAGATCACGGCGTTGTGCGAGGCCCT
GAGCATTGCCCTGCAAGTGGAGTACGTGGACGAGATGGATACCGCCCTGAACCACCACGTGTTCCCTGAG
GCCGCCACCCCTCCGTTTACCTGCTCTATAAAACATCCCACTACAACATCCTTTATGCAGCCGATAAAC
AT

AG**CGGACCG**ACGCGTACGCGGCCGCTCGAG - GFP Tag - GTTTAA



[View online »](#)

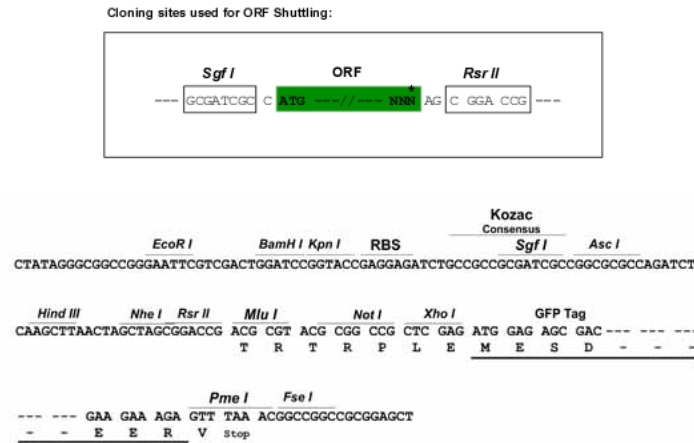
Protein Sequence: >RG209650 representing NM_023112
 Red=Cloning site Green=Tags(s)

MSETSNLISEKCDILSILRDHPENRIYRRKIEELSKRFTAIRKTKGDGNCFYRALGYSYLESLLGKSRE
 IFKFKERVLQTPNDLLAAGFEEHKFRNFFNAFYSSVVELVEKDGSVSSLLKVFNQDQASDHIVQFLRLTS
 AFIRNRADFFRHFIIDEEMDIKDFCTHEVEPMATECDHIQITALSQALSIALQVEYVDEMDTALNHHVFP
 AATPSVYLLYKTSHYNILYAADKH

SGPTRRRLE - GFP Tag - V

Restriction Sites: SgfI-RsrII

Cloning Scheme:



ACCN: NM_023112

ORF Size: 702 bp

OTI Disclaimer: The molecular sequence of this clone aligns with the gene accession number as a point of reference only. However, individual transcript sequences of the same gene can differ through naturally occurring variations (e.g. polymorphisms), each with its own valid existence. This clone is substantially in agreement with the reference, but a complete review of all prevailing variants is recommended prior to use. [More info](#)

OTI Annotation: This clone was engineered to express the complete ORF with an expression tag. Expression varies depending on the nature of the gene.

Components: The ORF clone is ion-exchange column purified and shipped in a 2D barcoded Matrix tube containing 10ug of transfection-ready, dried plasmid DNA (reconstitute with 100 ul of water).

Reconstitution Method:

1. Centrifuge at 5,000xg for 5min.
2. Carefully open the tube and add 100ul of sterile water to dissolve the DNA.
3. Close the tube and incubate for 10 minutes at room temperature.
4. Briefly vortex the tube and then do a quick spin (less than 5000xg) to concentrate the liquid at the bottom.
5. Store the suspended plasmid at -20°C. The DNA is stable for at least one year from date of shipping when stored at -20°C.

RefSeq: [NM_023112.1](#)

RefSeq Size: 3890 bp

RefSeq ORF: 705 bp

Locus ID: 78990

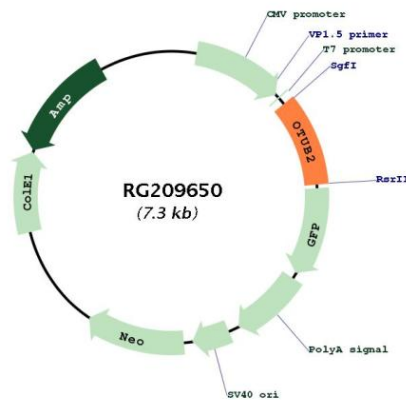
UniProt ID: [Q96DC9](#)

Cytogenetics: 14q32.12

Protein Families: Protease

Gene Summary: This gene encodes one of several deubiquitylating enzymes. Ubiquitin modification of proteins is needed for their stability and function; to reverse the process, deubiquitylating enzymes remove ubiquitin. This protein contains an OTU domain and binds Ubal (ubiquitin aldehyde); an active cysteine protease site is present in the OTU domain. [provided by RefSeq, Aug 2011]

Product images:



Circular map for RG209650