

## Product datasheet for **RG209642**

### SCYL1 (NM\_020680) Human Tagged ORF Clone

#### Product data:

Product Type:	Expression Plasmids
Product Name:	SCYL1 (NM_020680) Human Tagged ORF Clone
Tag:	TurboGFP
Symbol:	SCYL1
Synonyms:	GKLP; HT019; NKTL; NTKL; P105; SCAR21; TAPK; TEIF; TRAP
Mammalian Cell Selection:	Neomycin
Vector:	pCMV6-AC-GFP (PS100010)
E. coli Selection:	Ampicillin (100 ug/mL)



[View online »](#)

ORF Nucleotide  
Sequence:

>RG209642 representing NM\_020680  
Red=Cloning site Blue=ORF Green=Tags(s)

TTTTGTAATACGACTCACTATAGGGCGGCCGGGAATTCGTCGACTGGATCCGGTACCGAGGAGATCTGCC  
GCC**CGGATCGCC**

ATGTGGTTCTTTGCCCGGACCCGGTCCGGGACTTTCCGTTTCGAGCTCATCCCGAGCCCCAGAGGGCG  
GCCTGCCCGGGCCCTGGGCCCTGCACCGCGGCCGCAAGAAGGCCACAGGAGCCCGTGTCCATCTTCGT  
CTATGATGTGAAGCCTGGCGCGGAAGAGCAGACCCAGGTGGCCAAAGCTGCCTTCAAGCGCTTCAAAACT  
CTACGGCACCCCAACATCCTGGCTTACATCGATGGACTGGAGACAGAAAAATGCCTCCACGTCGTGACAG  
AGGCTGTGACCCCGTTGGGAATATACCTCAAGGCGAGAGTGGAGGCTGGTGGCCTGAAGGAGCTGGAGAT  
CTCCTGGGGGCTACACCAGATCGTGAAGCCCTCAGCTTCTGGTCAACGACTGCAGCCTCATCCACAAC  
AATGTCTGCATGGCCGCGTGTTCGTGGACCGAGCTGGCGAGTGAAGCTTGGGGCCTGGACTACATGT  
ATTCGGCCAGGGCAACGGTGGGGGACCTCCCGCAAGGGGATCCCGAGCTTGAGCAGTATGACCCCC  
GGAGTTGGCTGACAGCAGTGGCAGAGTGGTCAGAGAGAAGTGGTCAGCAGACATGTGGCGCTTGGGCTGC  
CTATTTGGGAAGTCTTCAATGGGCCCTACCTCGGGCAGCAGCCCTACGCAACCCTGGGAAGATCCCCA  
AAACGCTGGTGCCCACTTACTGTGAGCTGGTGGGAGCAAACCCCAAGGTGCGTCCCAACCAGCCCGCTT  
CCTGCAGAACTGCCGGGCACCTGGTGGCTTCATGAGCAACCGCTTGTAGAAACCAACCTTTCCTGGAG  
GAGATTGAGATCAAAGAGCCAGCCGAGAAGCAAAAATTCTCCAGGAGCTGAGCAAGAGCCTGGACGCAT  
TCCCTGAGGATTTCTGTCCGACAAGGTGCTGCCCCAGCTGTGACCGCCTTCGAGTTCCGCAATGCTGG  
GGCCGTTGCTCACGCCCTCTCAAGGTGGGCAAGTTCCTGAGCGCTGAGGAGTATCAGCAGAAGATC  
ATCCCTGTGGTGGTCAAGATGTTCTCATCCACTGACCGGGCCATGCGCATCCGCCTCCTGCAGCAGATGG  
AGCAGTTACCCAGTACCTTGACGAGCCAACAGTCAACACCCAGATCTTCCCCACGTGCTACATGGCTT  
CCTGGACACCAACCCTGCCATCCGGGAGCAGACGGTCAAGTCCATGCTGCTCCTGGCCCCAAAGCTGAAC  
GAGGCCAACCTCAATGTGGAGCTGATGAAGCACTTTGCACGGCTACAGGCCAAGGATGAACAGGGCCCCA  
TCCGCTGCAACACCACAGTCTGCCTGGGCAAAATCGGCTCCTACCTCAGTGTAGCACCAGACACAGGGT  
CCTTACCTCTGCCTTCAGCCGAGCCACTAGGGACCCGTTTGCACCGTCCCGGGTTGCGGGTGTCTGGGC  
TTTGCTGCCACCCACAACCTCTACTCAATGAACGACTGTGCCAGAAGATCCTGCCTGTGCTCTGCGGTC  
TCACTGTAGATCCTGAGAAATCCGTGCGAGACCAGGCCTTCAAGGCCATTCGGAGCTTCTGTCCAAATT  
GGAGTCTGTGTCGGAGGACCCGACCCAGCTGGAGGAAGTGGAGAAGGATGTCCATGCAGCCTCCAGCCCT  
GGCATGGGAGGAGCCGCAGCTAGCTGGGCAGGCTGGGCCGTGACCGGGTCTCCTCACTCACCTCCAAGC  
TGATCCGTTGCAACCAACCACTGCCCAACAGAAACCAACATTCGCCAAAGACCCACGCCTGAAGGAGT  
TCTGCCCCAGCCCCACCCCTGTTCTGCCACCCCTACAACCTCAGGCCACTGGGAGACGCAGGAGGAG  
GACAAGGACACAGCAGAGGACAGCAGCACTGCTGACAGATGGGACGACGAAGACTGGGGCAGCCTGGAGC  
AGGAGGGCCGAGTCTGTGCTGGCCAGCAGGACGACTGGAGCACCAGGGGGCCAAAGTGAAGCCTGTAGTCA  
GGTCAGCAACTCCGACCACAAATCTCCAAATCCCCAGAGTCCGACTGGAGCAGCTGGGAAGCTGAGGGC  
TCCTGGGAACAGGGCTGGCAGGAGCCAAGCTCCAGGAGCCACCTCCTGACGGTACACGGCTGGCCAGGC  
AGTATAACTGGGGTGGCCAGAGTCCAGCGACAAGGGCGACCCCTTCGCTACCTGTCTGCACGTCACAG  
CACCCAGCCGAGGCCAGACTCTTGGGGTGAAGCAACTGGGAGGGCCTCGAGACTGACAGTCGACAGGTC  
AAGGCTGAGCTGGCCCGAAGAAGCGCGAGGAGCGCGGGGAGATGGAGGCCAAACCGCCGAGAGGA  
AGGTGGCCAAGGGCCCCATGAAGCTGGGAGCCCGAAGCTGGAC

**ACGCGT**ACGCGGCCGCTCGAG – GFP Tag – GTTTAA

**Protein Sequence:** >RG209642 representing NM\_020680  
 Red=Cloning site Green=Tags(s)

```

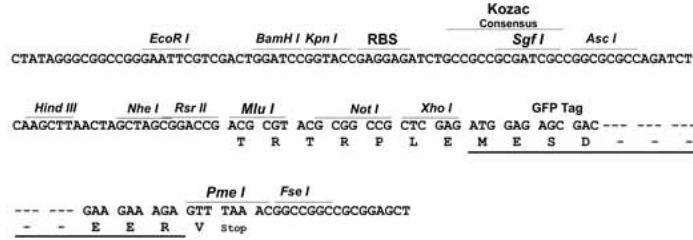
MWF FARDPVRDFPFELIPEPPEGGLPGPWALHRGRKKATGSPVSI FVYDVKPGAEEQTVAKAAFKRFT
LRHPNILAYIDGLETEKCLHVVTEAVTPLGIYLKARVEAGGLKELEISWGLHQIVKALSFLVNDCSLIHN
NVCMAAVFVDRAGEWKLGGLDYMYSAQNGGGPPRKGIPPELEQYDPELADSSGRVVREKWSADMWRLGC
LIWEVFNGLPRAAALRNPGKIPKTLVPHYCELVGANPKVRPNPARFLQNCRAPGGFMSNRFVETNLFLE
EIQIKEPAEKQKFFQELSKSLDAFPEDFCRHKVLPQLLTAF EFGNAGAVVLTPLFKVGFLSAEEYQQKI
IPVVVKMFSSTDRAMRIRLLQQMEQFIQYLDEPTVNTQIFPHVVHGF LDTNP AIREQTVKSMLLLAPKLN
EANLNVELMKHFARLQAKDEQGPIRCNTTVCLGKIGSYLSASTRHRVLTSAFSRATRDPFAPSRVAGVLG
FAATHNLYSMNDCAQKILPVLGGLTVDPEKSVRDQAFKAI RSFLSKLESVSEDPTQLEEVEKDVHAASSP
GMGGAASWAGWAVTGVSSLTSKLI RSHPTTAPTETNIPQRPTPEGVPAPAPTVPATPTTSGHWETQEE
DKDTAEDSSTADRWDDEDWGSLEQEAESVLAQQDDWSTGGQVSRASQVSNSDHKSSKSPESDWSSWEAEG
SWEQGWQEPSSQEPDPDTRLASEYNWGGPESSDKGDPFATLSARPSTQPRPDSWGEDNWEGLETD SRQV
KAELARKKREERRREMEAKRAERKVAKGPMKLGARKLD
  
```

TRTRPLE - GFP Tag - V

**Restriction Sites:** Sgfl-Mlul

Cloning Scheme:

Cloning sites used for ORF Shutting:



ACCN: NM\_020680

ORF Size: 2424 bp

**OTI Disclaimer:** Due to the inherent nature of this plasmid, standard methods to replicate additional amounts of DNA in E. coli are highly likely to result in mutations and/or rearrangements. Therefore, OriGene does not guarantee the capability to replicate this plasmid DNA. Additional amounts of DNA can be purchased from OriGene with batch-specific, full-sequence verification at a reduced cost. Please contact our customer care team at [custsupport@origene.com](mailto:custsupport@origene.com) or by calling 301.340.3188 option 3 for pricing and delivery.

The molecular sequence of this clone aligns with the gene accession number as a point of reference only. However, individual transcript sequences of the same gene can differ through naturally occurring variations (e.g. polymorphisms), each with its own valid existence. This clone is substantially in agreement with the reference, but a complete review of all prevailing variants is recommended prior to use. [More info](#)

**OTI Annotation:** This clone was engineered to express the complete ORF with an expression tag. Expression varies depending on the nature of the gene.

**Components:** The ORF clone is ion-exchange column purified and shipped in a 2D barcoded Matrix tube containing 10ug of transfection-ready, dried plasmid DNA (reconstitute with 100 ul of water).

**Reconstitution Method:**

1. Centrifuge at 5,000xg for 5min.
2. Carefully open the tube and add 100ul of sterile water to dissolve the DNA.
3. Close the tube and incubate for 10 minutes at room temperature.
4. Briefly vortex the tube and then do a quick spin (less than 5000xg) to concentrate the liquid at the bottom.
5. Store the suspended plasmid at -20°C. The DNA is stable for at least one year from date of shipping when stored at -20°C.

**RefSeq:** [NM\\_020680.4](#)

**RefSeq Size:** 2667 bp

**RefSeq ORF:** 2427 bp

**Locus ID:** 57410

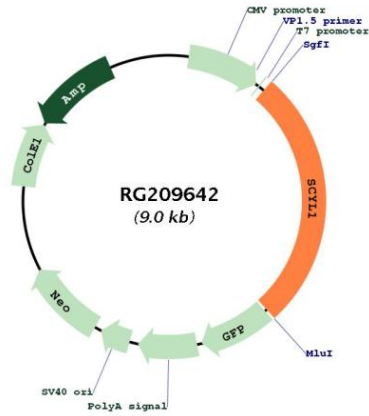
**UniProt ID:** [Q96KG9](#)

**Cytogenetics:** 11q13.1

**Protein Families:** Druggable Genome, Protein Kinase

**Gene Summary:** This gene encodes a transcriptional regulator belonging to the SCY1-like family of kinase-like proteins. The protein has a divergent N-terminal kinase domain that is thought to be catalytically inactive, and can bind specific DNA sequences through its C-terminal domain. It activates transcription of the telomerase reverse transcriptase and DNA polymerase beta genes. The protein has been localized to the nucleus, and also to the cytoplasm and centrosomes during mitosis. Multiple transcript variants encoding different isoforms have been found for this gene. [provided by RefSeq, Jul 2008]

Product images:



Circular map for RG209642