

Product datasheet for **RG209639**

AMFR (NM_001144) Human Tagged ORF Clone

Product data:

Product Type:	Expression Plasmids
Product Name:	AMFR (NM_001144) Human Tagged ORF Clone
Tag:	TurboGFP
Symbol:	AMFR
Synonyms:	GP78; RNF45
Mammalian Cell Selection:	Neomycin
Vector:	pCMV6-AC-GFP (PS100010)
E. coli Selection:	Ampicillin (100 ug/mL)



[View online »](#)

ORF Nucleotide Sequence:

>RG209639 representing NM_001144
 Red=Cloning site Blue=ORF Green=Tags(s)

TTTTGTAATACGACTCACTATAGGGCGGCCGGGAATTCGTCGACTGGATCCGGTACCGAGGAGATCTGCC
 GCC**CGGATCGCC**

ATGCCGCTGCTTCTCCTCGAGCGCTTCCCTGGCCAGCCTCCGCACCTACACGGGCCTCAGCGCCTGG
 CCCTGCTGGGCACCATCATCAGCGCCTACCGCGCCTCAGCCAGCCGAGGCCGGCCCGCGAGCCGGA
 CCAGCTAACGGCCTCGCTGCAGCCTGAGCCGCCGGCGCCCGCCGGCCGAGCGCCGGGGACCCCGGCC
 CGCGATGTGGCCAGTACCTGCTCTCAGACAGCCTCTTCGTGTGGTTCTAGTAAATACCCTTGTGTG
 TTTTGATGTTGGTGGCTAAGCTCATCCAGTGTATTGTGTTGGCCCTTTCGAGTGAGTGAGAGACGCA
 TCTCAAAGACAAATTTTGAATTTATTTTCTACAAGTTCATTTTCATCTTTGGTGTGCTGAATGCCAG
 ACAGTGAAGAGGTGGTCATGTGGTGCCTCTGGTTTCCCGACTGTCTTCTGCACCTGATGGTTCAGC
 TCTGCAAGGATCGATTTGAATATCTTCCCTTCTGCCCACCACCGCGATGAGCAGCCACGGTCGAGTCT
 GTCCTGTGGTTGCCATGCTGCTTTCCTGCTGTGGACTGGCGCCGTCTGCTCCATCACGGCTACACC
 CACGGAATGCACACCTTGGCTTTCATGGCTGCAGAGTCTTCTTGTGACAGTGAGGACTGCTCATGTGA
 TTTTACGATACGTAATTCACCTCTGGGACCTCAACCACGAAGGGACGTGGGAAGGAAAGGGACGTATG
 CTATTACACAGACTTTGTGATGGAGCTCACTCTCCTGTCCCTGGACCTCATGCACCATATTCACATGTTG
 TATTTGGCAACATCTGGTTATCCATGGCCAGCCTGGTCATCTTTATGCAGCTGCGTTACCTGTTTCATG
 AGGTGCAACGTCGAATTCGTGCGCACAAGAATACTACGTGTGGTTGAAAACATGGAGGCCAGGTTTGC
 AGTTGCAACTCCAGAGGAGCTGGCTGTCAACAATGACGACTGTGCCATCTGTTGGGACTCCATGCAGGCT
 GCGCGGAAACTGCCCTGTGGACATCTTTCCACAACCTCTGCTTTCGTTCCCTGAGTGAACAAGACCT
 CCTGTCCAACATGCAGAATGCTCTTAATATTGCCGACAATAATCGTGTGACAGGAAACATCAAGGAGA
 GAACTTGGATGAGAATTTGGTTCCCTGTAGCAGCAGCCGAAGGGAGACCTCGCTTAAACCAACACAATCAC
 TTCTTCCATTTGATGGGTCTCGGATTGCGAGCTGGCTGCCGAGTTTTTCGGTTGAAGTGATGCACACCA
 CCAACATTTCTGGCATTACGAGGCCAGCAACTCCCAGCTCAATGCAATGGCTCATCAGATTCAAGAGAT
 GTTTCCCAGGTTCCATACCATCTGGTACTGCAGGACCTCCAGCTGACACGCTCAGTTGAAATAACAACA
 GACAATATTTAGAAGGACGGATTCAAGTACCTTTTCTACACAGCGGTGAGATGATCAGACCTGCAT
 TGAACAGTCTGTGAAAGGCCAAGCAGTGACCAGGAAGAGGGAGAACTTCTGCTCAGACCAGCGTGT
 GCCACTGGACCTCAGTCTCGCTGGAGGAGACGCTGGACTTCGCGGAGGTGGAAGTGGAGCCCAGTGAG
 GTGGAAGACTTCGAGGCTCGTGGGAGCCGCTTCTCCAAGTCTGCTGATGAGAGACAGCGCATGCTGGTGC
 AGCGTAAGGACGAACTCCTCCAGCAAGCTCGCAAACGTTTCTTGAACAAAAGTTCTGAAGATGATGCGGC
 CTCAGAGAGCTTCTCCCTCGGAAGGTGCGTCTCTGACCCCGTGACCCTGCGTGAAGGATGCTGGCT
 GCCCGCGGAACGGAGGCTTCAGAAGCAGCAGACCTCC

ACGCGTACGCGGCCGCTCGAG – GFP Tag – GTTTAA

Protein Sequence:

>RG209639 representing NM_001144
 Red=Cloning site Green=Tags(s)

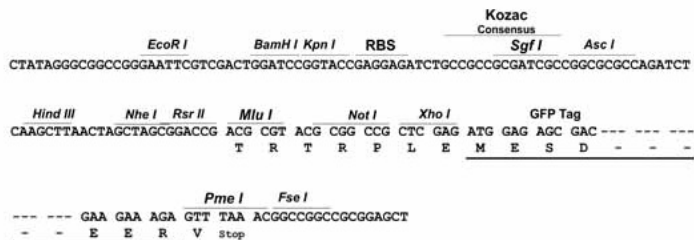
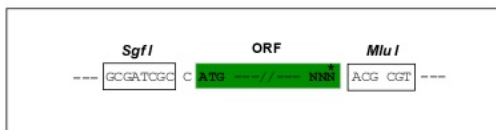
MPLLFLERFPWPSLRTYTGLSGLALLGTIISAYRALSQPEAGPGEPDQLTASLQPEPPAPARPSAGGPRA
 RDVAQYLLSDSLFVWVLTNTACCVLMLVAKLIQCIVFGPLRVSERQHLKDKFVNFIFYKFIIFVGLNVQ
 TVEEVVMWCLWFAGLVFLHLMVQLCKDRFEYLSFPTTPMSSHGRVLSLLVAMLLSCCGLAAVCSITGYT
 HGMHTLAFMAAESLLVTVRTHVILRYVIHLWDLNHEGTWEGKTYVYVYDFVMELTLLSLDLMHIIHML
 LFGNIWLSMASLVIFMQLRYLFHEVQRRIRRHKNYLRVGNMEARFAVATPEELAVNNDCAICWDSMQA
 ARKLPCHL FHNSCLRSWLEQDTSPTCRMSLNIADNNRVREEHQENLDENLVPVAAAAGRPRLNQHNNH
 FFHFDGSRIASWLPFSFVEVMHTNILGITQASNSQLNAMAHIQEMFPQVPYHLVLQDLQLTRSVEITT
 DNILEGRIQVFPPTQRSISRPNLNSPVERPSSDQEEGETSAQTERVPLDLSPRLEETLDFGEVEVEPSE
 VEDFEARGSRFSKASADERQRMLVQRKDELLQQARKRFLNKSSEDDAASESFLPSEGASSDPVTLRRRMLA
 AAAERRLQKQTS

TRTRPLE – GFP Tag – V

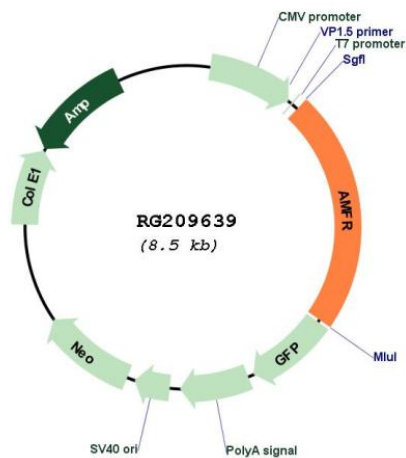
Restriction Sites: SgfI-MluI

Cloning Scheme:

Cloning sites used for ORF Shutting:



Plasmid Map:



ACCN: NM_001144

ORF Size: 1929 bp

OTI Disclaimer: Due to the inherent nature of this plasmid, standard methods to replicate additional amounts of DNA in E. coli are highly likely to result in mutations and/or rearrangements. Therefore, OriGene does not guarantee the capability to replicate this plasmid DNA. Additional amounts of DNA can be purchased from OriGene with batch-specific, full-sequence verification at a reduced cost. Please contact our customer care team at custsupport@origene.com or by calling 301.340.3188 option 3 for pricing and delivery.

The molecular sequence of this clone aligns with the gene accession number as a point of reference only. However, individual transcript sequences of the same gene can differ through naturally occurring variations (e.g. polymorphisms), each with its own valid existence. This clone is substantially in agreement with the reference, but a complete review of all prevailing variants is recommended prior to use. [More info](#)

OTI Annotation: This clone was engineered to express the complete ORF with an expression tag. Expression varies depending on the nature of the gene.

Components: The ORF clone is ion-exchange column purified and shipped in a 2D barcoded Matrix tube containing 10ug of transfection-ready, dried plasmid DNA (reconstitute with 100 ul of water).

Reconstitution Method:

1. Centrifuge at 5,000xg for 5min.
2. Carefully open the tube and add 100ul of sterile water to dissolve the DNA.
3. Close the tube and incubate for 10 minutes at room temperature.
4. Briefly vortex the tube and then do a quick spin (less than 5000xg) to concentrate the liquid at the bottom.
5. Store the suspended plasmid at -20°C. The DNA is stable for at least one year from date of shipping when stored at -20°C.

RefSeq: [NM_001144.6](#)

RefSeq Size: 3594 bp

RefSeq ORF: 1932 bp

Locus ID: 267

UniProt ID: [Q9UKV5](#)

Cytogenetics: 16q13

Domains: RING, CUE

Protein Families: Druggable Genome, Transmembrane

Gene Summary: This locus encodes a glycosylated transmembrane receptor. Its ligand, autocrine motility factor, is a tumor motility-stimulating protein secreted by tumor cells. The encoded receptor is also a member of the E3 ubiquitin ligase family of proteins. It catalyzes ubiquitination and endoplasmic reticulum-associated degradation of specific proteins. [provided by RefSeq, Feb 2012]