

## Product datasheet for **RG209610**

### MRGX3 (MRGPRX3) (NM\_054031) Human Tagged ORF Clone

#### Product data:

Product Type:	Expression Plasmids
Product Name:	MRGX3 (MRGPRX3) (NM_054031) Human Tagged ORF Clone
Tag:	TurboGFP
Symbol:	MRGX3
Synonyms:	GPCR; MRGX3; SNSR1; SNSR2
Mammalian Cell Selection:	Neomycin
Vector:	pCMV6-AC-GFP (PS100010)
E. coli Selection:	Ampicillin (100 ug/mL)
ORF Nucleotide Sequence:	>RG209610 representing NM_054031 Red=Cloning site Blue=ORF Green=Tags(s)

TTTTGTAATACGACTCACTATAGGGCGGCCGGAATTCGTCGACTGGATCCGGTACCGAGGAGATCTGCC  
GCC**CGATCGCC**

ATGGATCAACCATCCCAGTCTTGGGTACAGAAGTACACCAATCAACGGACGTGAGGAGACTCCTTGCT  
ACAAGCAGACCCTGAGCTTACGGGGCTGACGTGCATCGTTTCCCTTGTGCGCTGACAGGAAACGCGGT  
TGTGCTCTGGCTCCTGGGCTGCCGATGCGCAGGAACGCTGTCTCCATCTACATCCTCAACCTGGTCGCG  
GCCGACTTCTCTTCTTAGCGCCACATTATACGTTCCGGTTACGCCTCATCAATATCCGCCATCCCA  
TCTCCAAAATCCTCAGTCTGTGATGACCTTCCCTACTTTATAGCCTAAGCATGCTGAGCGCCATCAG  
CACCGAGCGCTGCCTGTCCATCCTGTGGCCATCTGGTACCAGTCCCGCCGCCAGATACCTGTATCG  
GTCATGTGTGCTGCTCTGGGCCCTGTCCCTGCTGCGGAGTATCCTGGAGTGGATGTTCTGTGACTTCC  
TGTTTAGTGGTGCTGATTCTGTTGGTGTGAAACGTGAGATTTTATTACAATCGCGTGGCTGGTTTTTTT  
ATGTGTGGTTCTCTGTGGGTCCAGCCTGGTCTGCTGGTCCAGGATTCTGTGGATCCCGGAAGATGCCG  
CTGACCAGGCTGTACGTGACCATCCTCACAGTGTGGTCTTCCCTCTGTGGCCTGCCCTTTGGCA  
TTCAGTGGGCCCTGTTTTCCAGGATCCACCTGGATTGAAAGTCTATTTTGTGATGTGCATCTAGTTTC  
CATTTTCTGTCCGCTCTAACAGCAGTGCCAACCCATCATTTACTTCTTCTGGGGCTCCTTTAGGCAG  
CGTCAAAATAGGCAGAACCTGAAGCTGGTCTCCAGAGGGCTCTGCAGGACACGCTGAGGTGGATGAAG  
GTGGAGGCGAGCTTCTCAGGAAACCTGGAGCTGTCCGGAAGCAGATTGGAGCAG

**ACGCGT**ACGCGGCCGCTCGAG - GFP Tag - GTTTAA



[View online »](#)

**Protein Sequence:** >RG209610 representing NM\_054031  
 Red=Cloning site Green=Tags(s)

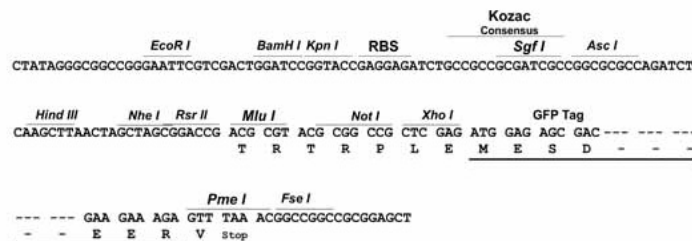
MDSTIPVLGTELTPINGREETPCYKQTLSTFTGLTCIVSLVALTGNVAVLWLLGCRMRRNAVSIYILNLVA  
 ADFLFLSGHIIRSPLRLINIRHPISKILSPVMTFPYFIGLSMLSAISTERCLSILWPIWYHCRPRYLSS  
 VMCVLLWALSLLRSILEWMFCDFLFSGADSVWCETSDFITIAWLFLCVLFCGSSLVLLVRILCGSRKMP  
 LTRLVYVITLLTVLVFLLCGLPFGIQWALFSRIHLDWKVLFCHVHLVSIFLSALNSSANPIIYFFVGSFRQ  
 RQNRQNLKLVLQRALQDTPEVDEGGGQLPQETLELSGSRLEQ

TRTRPLE - GFP Tag - V

**Restriction Sites:** SgfI-MluI

**Cloning Scheme:**

Cloning sites used for ORF Shuttling:



**ACCN:** NM\_054031

**ORF Size:** 966 bp

**OTI Disclaimer:** The molecular sequence of this clone aligns with the gene accession number as a point of reference only. However, individual transcript sequences of the same gene can differ through naturally occurring variations (e.g. polymorphisms), each with its own valid existence. This clone is substantially in agreement with the reference, but a complete review of all prevailing variants is recommended prior to use. [More info](#)

**OTI Annotation:** This clone was engineered to express the complete ORF with an expression tag. Expression varies depending on the nature of the gene.

**Components:** The ORF clone is ion-exchange column purified and shipped in a 2D barcoded Matrix tube containing 10ug of transfection-ready, dried plasmid DNA (reconstitute with 100 ul of water).

**Reconstitution Method:**

1. Centrifuge at 5,000xg for 5min.
2. Carefully open the tube and add 100ul of sterile water to dissolve the DNA.
3. Close the tube and incubate for 10 minutes at room temperature.
4. Briefly vortex the tube and then do a quick spin (less than 5000xg) to concentrate the liquid at the bottom.
5. Store the suspended plasmid at -20°C. The DNA is stable for at least one year from date of shipping when stored at -20°C.

**RefSeq:** [NM\\_054031.2](#), [NP\\_473372.2](#)

**RefSeq Size:** 1697 bp

**RefSeq ORF:** 969 bp

**Locus ID:** 117195

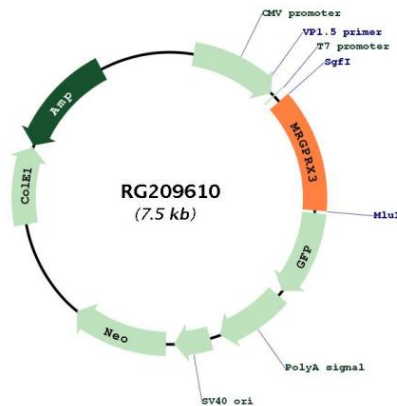
**UniProt ID:** [Q96LB0](#)

**Cytogenetics:** 11p15.1

**Protein Families:** Druggable Genome, GPCR, Transmembrane

**Gene Summary:** This gene encodes a member of the mas-related/sensory neuron specific subfamily of G protein coupled receptors. The encoded protein may be involved in sensory neuron regulation and in the modulation of pain. [provided by RefSeq, Oct 2009]

**Product images:**



Circular map for RG209610